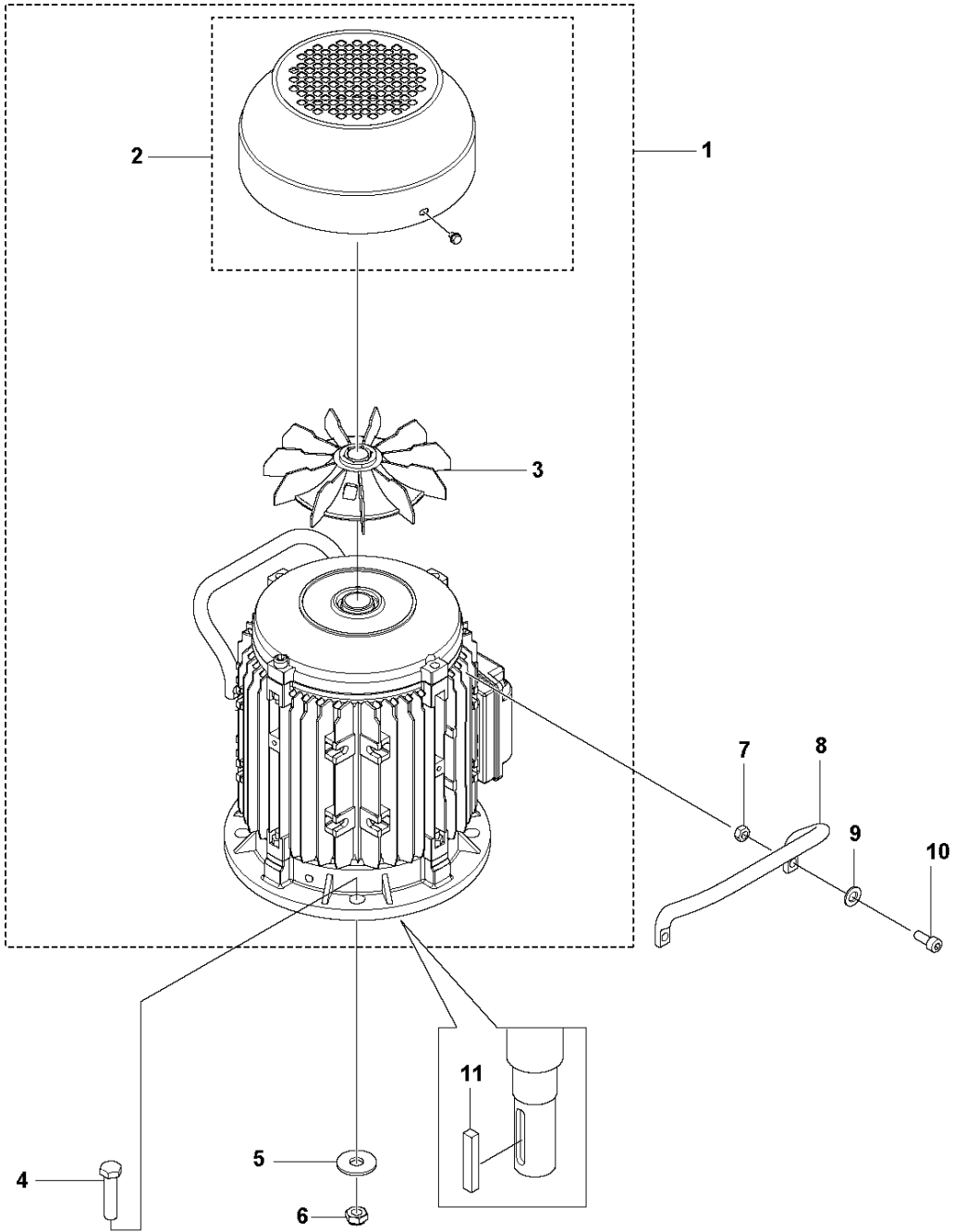


# SPARE PARTS LIST

SURFACE PREPARATION EQUIPMENT

HTC 400, 2019-01

**A** HTC 400  
Motor

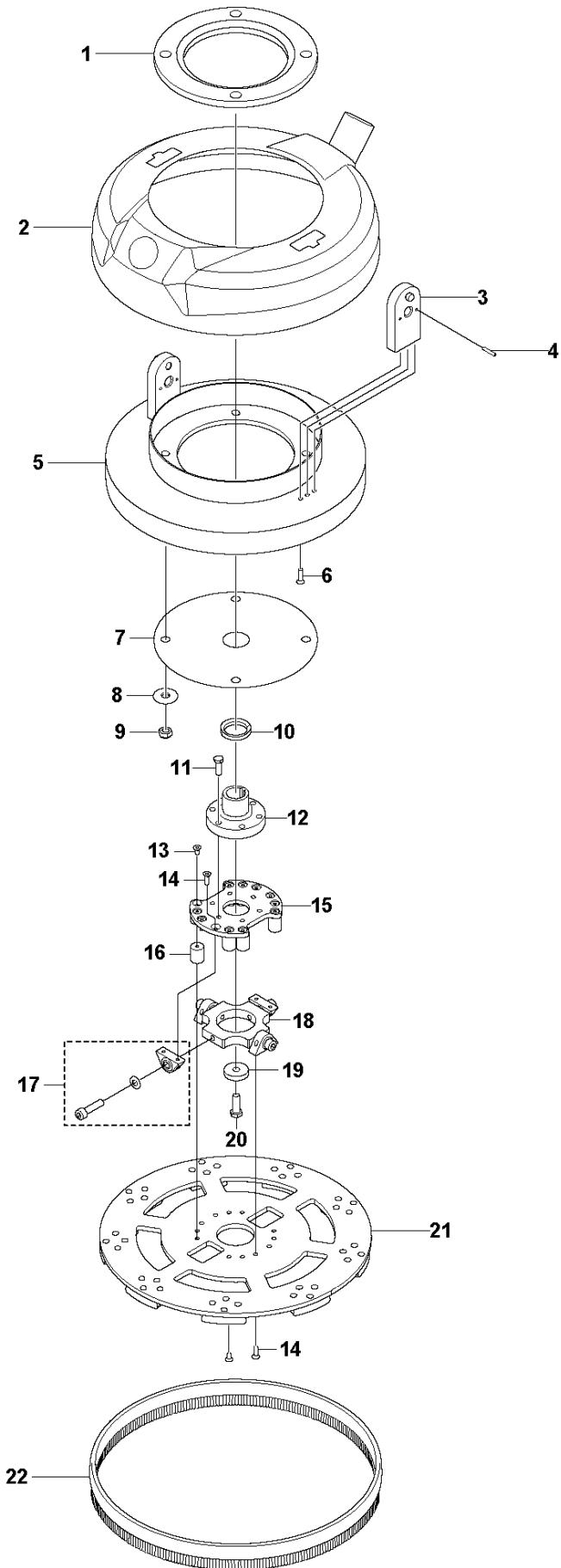


## MOTOR

HTC 400, 2019-01

Ref	Part No	Description	Remark	QTY KIT
1	589 68 63-02	MOTOR	3-Phase	1
1	585 30 22-03	MOTOR	1-Phase	1
2	594 00 99-02	FAN COVER	3-phase	1
2	587 17 46-02	FAN COVER	1-phase	1
3	594 01 00-01	FAN	3-Phase	1
3	587 17 47-02	FAN	1-Phase	1
4	725 25 43-71	SCREW EHHM		4
5	734 11 80-41	WASHER		4
6	732 25 22-01	HEXAGON LOCKING NUT		4
7	731 23 18-01	HEXAGON NUT		4
8	585 42 33-05	HANDLE		2
9	734 11 63-01	WASHER		4
10	725 54 53-01	SCREW IHSCM		4
11	597 27 18-01	PARALLEL KEY		1

**B** HTC 400  
Grinding Head

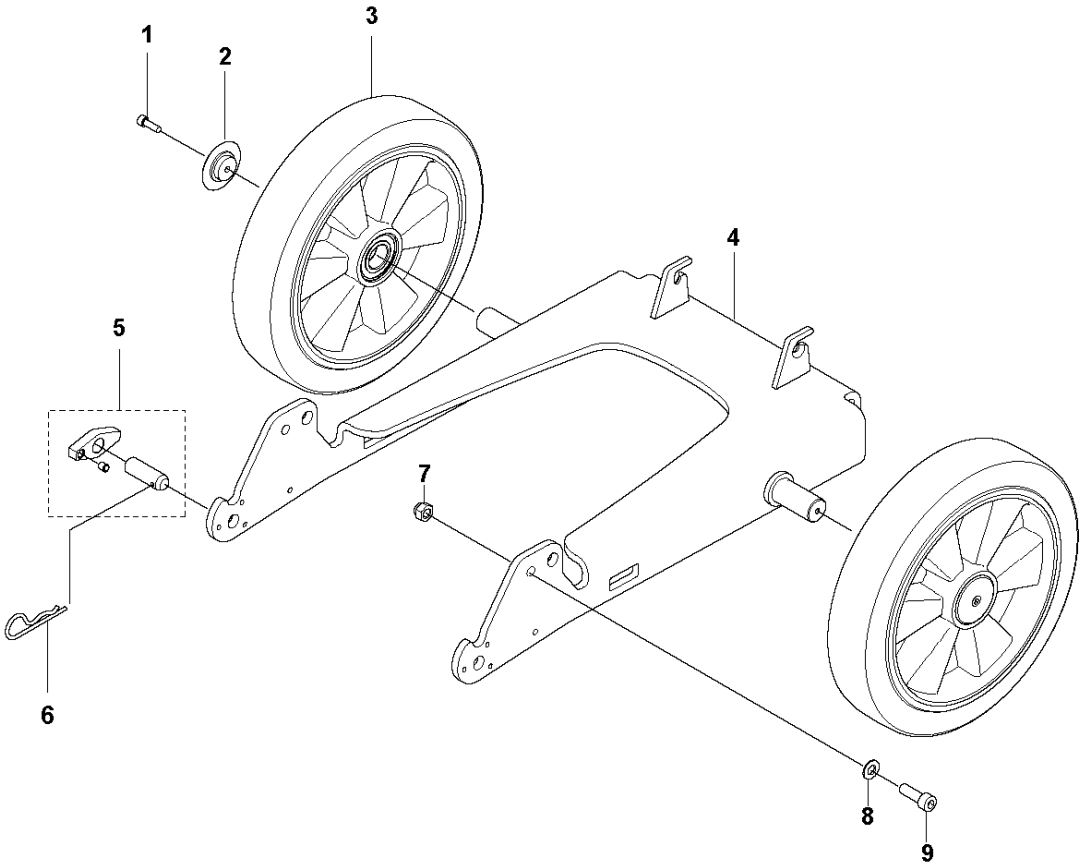


## GRINDING HEAD

HTC 400, 2019-01

Ref	Part No	Description	Remark	QTY KIT
1	585 08 33-03	SPACER		1
2	595 83 87-01	DUST COVER		1
3	585 08 33-03	SPACER		1
4	721 42 59-01	SPRING PIN		4
5	585 54 03-01	BRACKET		2
6	725 63 72-51	SCREW IHCSFM		6
7	589 79 75-01	SEALING PLATE		1
8	734 11 80-41	WASHER		4
9	732 25 22-01	HEXAGON LOCKING NUT		4
10	589 92 58-01	V-RING		1
11	725 54 53-01	SCREW IHSCM		6
12	594 89 54-01	COUPLER		1
13	725 63 66-51	SCREW IHCSFM		16
14	725 63 70-51	SCREW IHCSFM		8
15	594 89 53-01	PLATE		1
16	584 81 61-01	ABSORBER		8
17	597 27 37-01	DAMPER		4
18	594 89 50-01	PLATE		1
19	510 23 51-01	WASHER		1
20	725 24 95-71	SCREW EHHM		1
21	596 65 79-01	DISC		1
22	582 30 00-11	BRUSH		1

**C** HTC 400  
Chassi

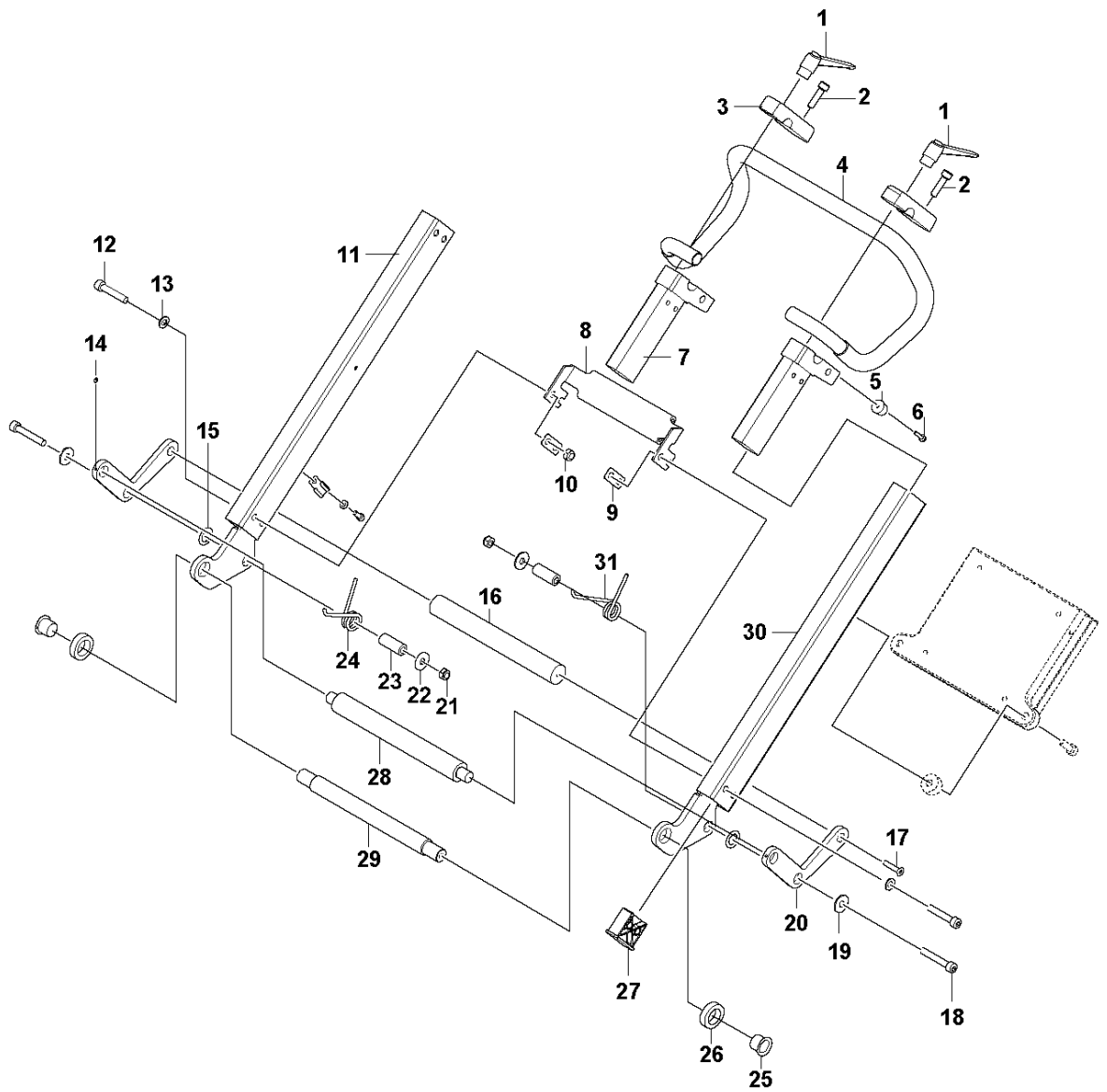


## CHASSIS

HTC 400, 2019-01

Ref	Part No	Description	Remark	QTY KIT
1	725 53 70-51	SCREW IHSCM		2
2	575 39 51-01	WASHER		2
3	502 54 50-01	WHEEL		2
4	585 10 91-03	CHASSIS		1
5	586 99 17-02	BOLT		2
6	721 68 02-51	SPRING COTTER		2
7	732 25 20-01	HEXAGON LOCKING NUT		2
8	734 11 72-01	WASHER		2
9	725 54 95-01	SCREW IHSCM		2

**D** HTC 400  
Frame



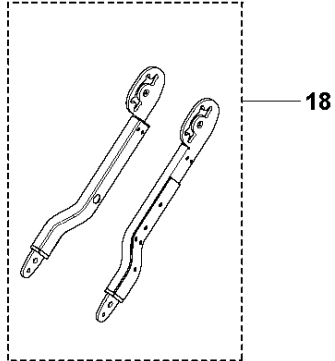
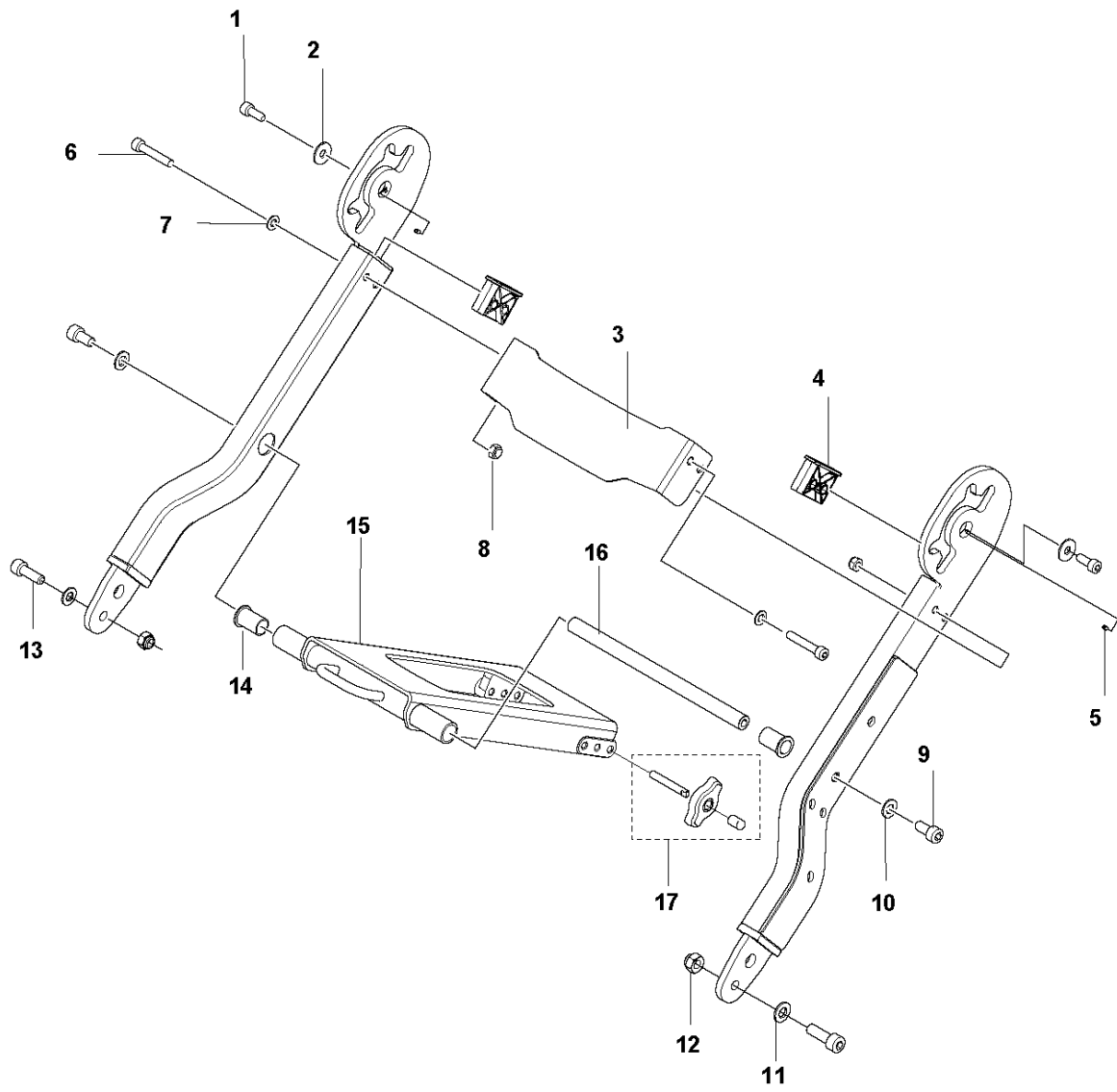


## FRAME

HTC 400, 2019-01

Ref	Part No	Description	Remark	QTY KIT
1	590 37 37-01	LOCKING HANDLE		2
2	725 54 55-01	SCREW IHSCM		2
3	585 51 66-01	BRACKET		2
4	594 90 56-01	HANDLE TUBE		1
5	585 51 68-01	RUBBER SHOE		2
6	725 52 95-01	SCREW IHSCM		2
7	589 83 77-01	BRACKET		2
8	585 38 28-04	BRACKET		1
9	585 38 31-01	WASHER		2
10	732 21 18-01	LOCK NUT		8
11	585 57 35-12	FORK		1
12	725 54 60-01	SCREW IHSCM		8
13	734 11 63-01	WASHER		8
14	728 82 85-01	SCREW IHSETM		6
15	585 41 62-01	WASHER		2
16	585 13 37-04	HANDLE		1
17	725 63 74-51	SCREW		2
18	725 54 61-01	SCREW IHSCM		2
19	734 11 65-41	WASHER		4
20	585 13 33-01	PLATE		2
21	732 21 18-01	LOCK NUT		2
22	734 11 65-41	WASHER		4
23	585 38 33-02	SLEEVE		2
24	585 41 73-01	SPRING		1
25	585 41 60-01	BUSH		2
26	585 13 35-01	SPACER		2
27	585 13 29-01	SPACER		4
28	585 13 38-01	ROD		1
29	585 13 38-01	ROD		1
30	585 57 35-12	FORK		1
31	585 41 61-01	SPRING		1

**E** HTC 400  
Frame

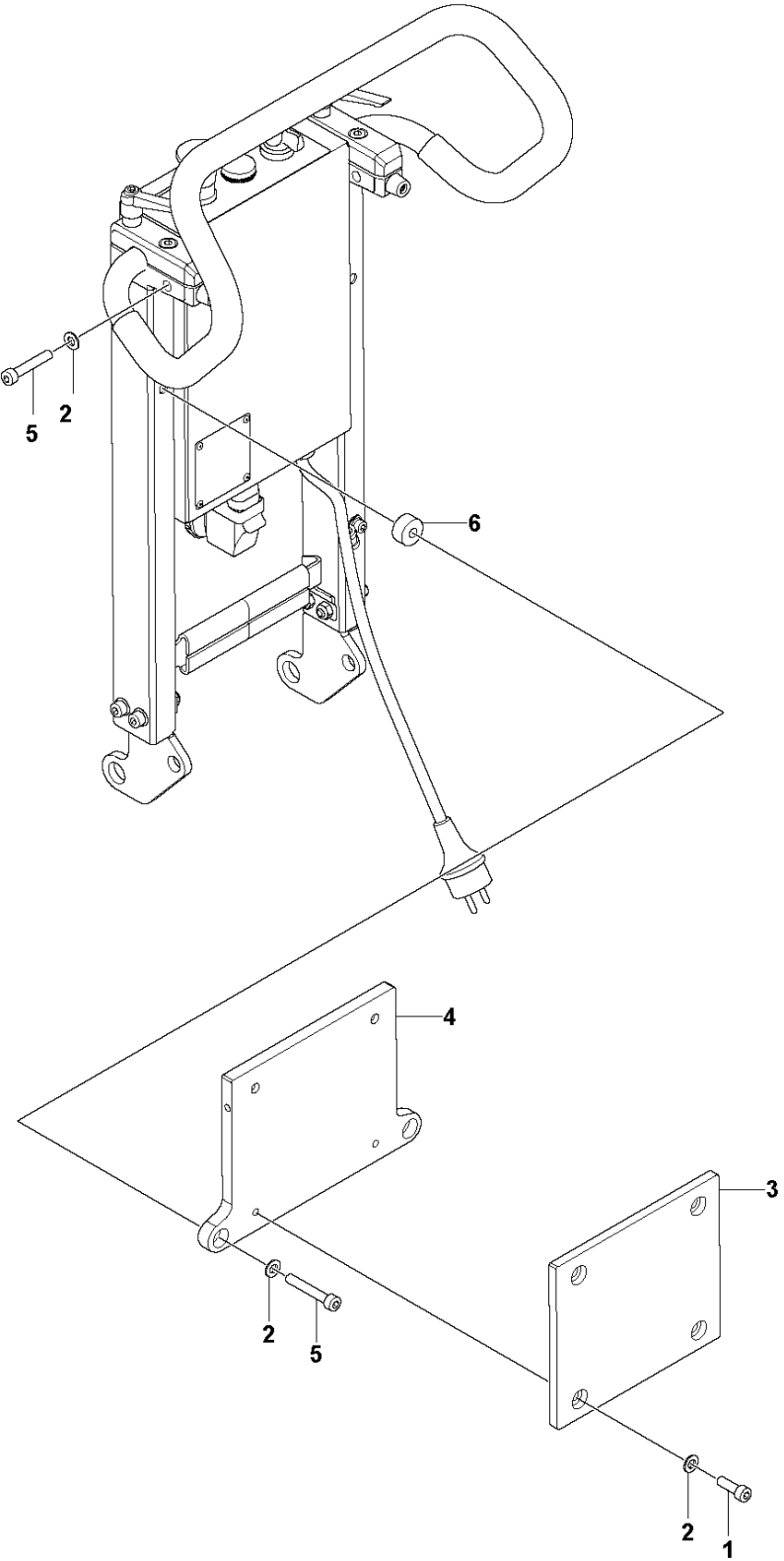


## FRAME

HTC 400, 2019-01

Ref	Part No	Description	Remark	QTY KIT
1	725 54 51-01	SCREW IHSCM		2
2	734 11 65-41	WASHER		2
3	585 38 30-04	BRACKET		1
4	585 13 29-01	SPACER		2
5	728 82 85-01	SCREW IHSETM		6
6	725 54 60-01	SCREW IHSCM		8
7	734 11 63-01	WASHER		8
8	732 21 18-01	LOCK NUT		10
9	725 54 91-01	SCREW IHSCM		2
10	734 11 72-01	WASHER		2
11	734 11 72-01	WASHER		2
12	732 25 20-01	HEXAGON LOCKING NUT		2
13	725 54 95-01	SCREW IHSCM		2
14	585 12 91-01	BUSH		2
15	585 10 97-02	SUPPORT		1
16	585 12 90-02	TUBE		1
17	590 47 22-01	WING KNOB		2
18	593 89 71-02	FRAME TUBE		1

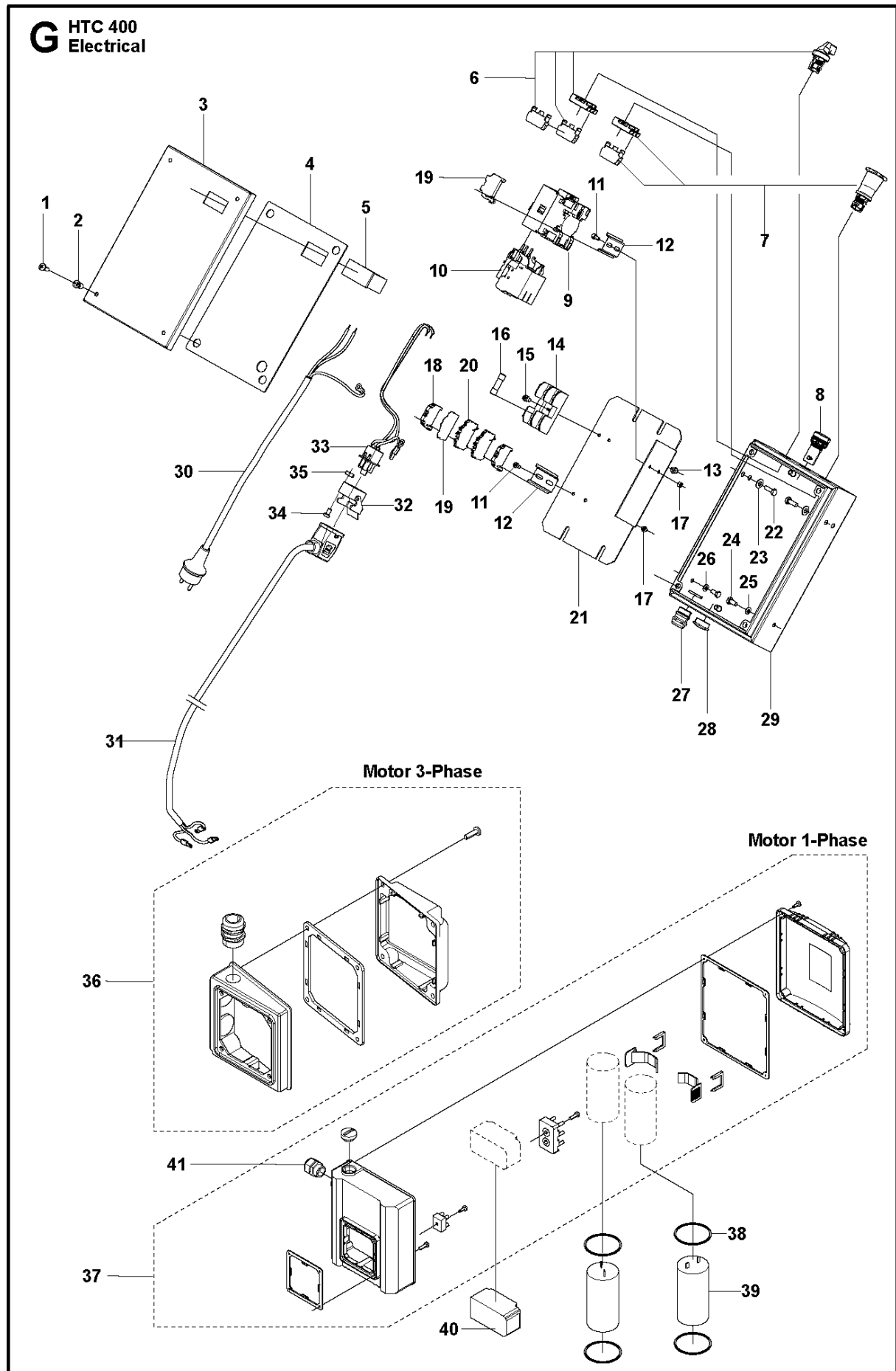
**F** HTC 400  
Weight pack



WEIGHT KITS

HTC 400, 2019-01

Ref	Part No	Description	Remark	QTY KIT
1	725 54 53-01	SCREW IHSCM		4
2	734 11 63-01	WASHER		8
3	589 83 72-03	COUNTERWEIGHT		2
4	589 83 71-03	COUNTERWEIGHT		1
5	725 54 60-01	SCREW IHSCM		4
6	590 20 34-01	BUSHING		2

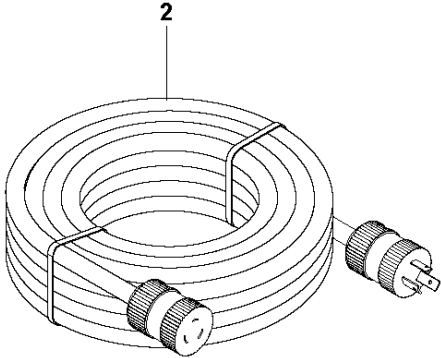
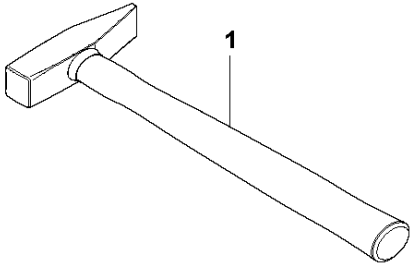
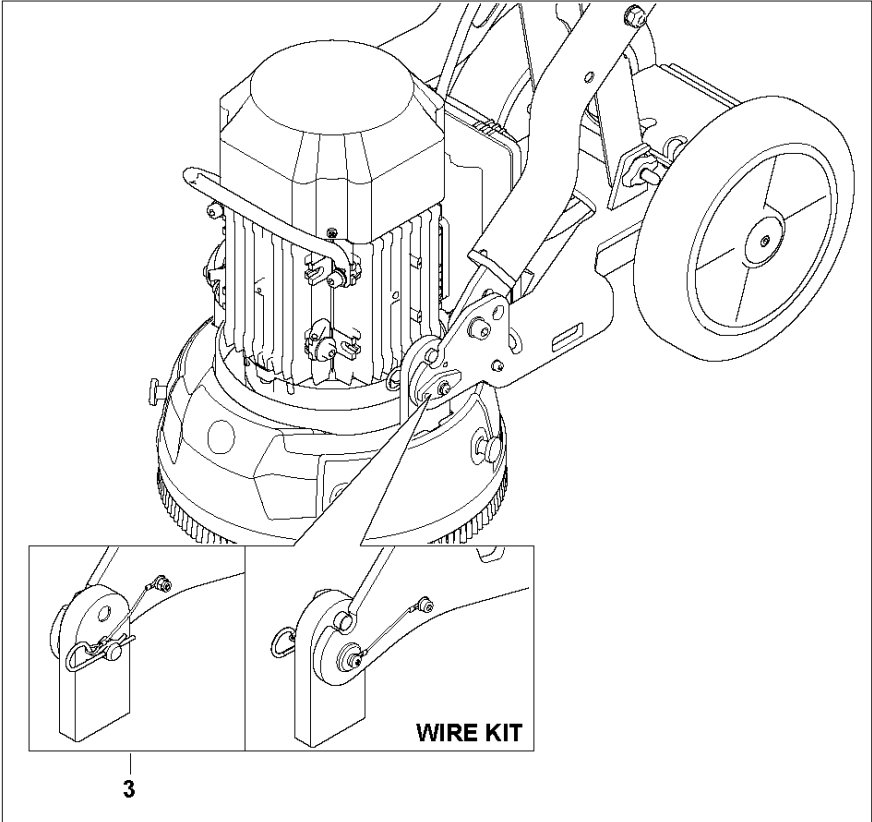


## ELECTRICAL

HTC 400, 2019-01

Ref	Part No	Description	Remark	QTY KIT
1	724 13 68-51	SCREW CRPANM		4
2	521 88 66-01	RIVET		4
3	586 47 43-04	LID		1
4	586 46 70-02	SEALING		1
5	584 29 63-01	HOUR METER		1
6	586 99 15-01	SWITCH KIT		1
7	586 99 16-01	SWITCH KIT		1
8	584 29 71-01	LAMP	230V	1
8	584 29 71-03	LAMP	415V	1
9	585 36 58-03	CONTACTOR	400-480V, 50/60Hz	1
9	585 36 58-01	CONTACTOR	200-230V, 50/60Hz	1
10	584 29 78-02	RELAY	3-phase	1
10	580 62 35-01	PROTECTION	1-phase	1
11	725 53 25-01	SCREW IHSCM		4
12	522 74 70-01	RAIL		2
13	731 23 16-01	HEXAGON NUT		1
14	525 88 26-01	FUSE HOLDER		1
15	725 53 64-55	SCREW IHSCM		1
16	525 63 81-01	FUSE		2
17	732 25 14-01	HEXAGON LOCKING NUT		4
18	585 36 61-05	TERMINAL BLOCK		3
19	585 36 61-03	TERMINAL BLOCK		1
20	585 61 35-01	TERMINAL BLOCK	2 pcs for 1ph & 3 pcs for 3ph machines	2
21	590 07 58-01	MOUNTING PLATE		1
22	725 24 51-71	SCREW EHHM		4
23	734 11 63-01	WASHER		4
24	725 23 66-51	HEXAGONAL SCREW M6X12		2
25	734 11 52-01	WASHER		1
26	735 21 53-01	LOCKWASHER		1
27	510 43 17-01	CABLE GROMMET		1
28	586 58 69-01	PLUG		1
28	586 58 69-02	PLUG		1
29	582 50 69-05	ELECTRONIC BOX		1
30	586 23 78-01	CABLE	3 phase	1
30	586 23 68-12	CABLE	US, 1 phase 230V	1
31	585 63 81-07	CABLE	3 phase	1
31	585 63 81-05	CABLE	US/CAN, 1 phase	1
32	585 36 66-05	CONNECTOR		1
33	590 50 35-01	CONNECTOR		1
34	725 52 24-01	SCREW		2
35	732 25 10-01	HEXAGON LOCKING NUT		2
36	587 17 39-02	ELECTRONIC BOX	3 phase	1
37	587 17 39-01	ELECTRONIC BOX	1 phase	1
38	587 17 45-03	CAPACITOR	230V, 50/60Hz, run capacitor 45uF	1
39	587 17 44-04	CAPACITOR	230V, 50/60Hz, start capacitor 250uF	1
40	587 17 43-04	SWITCH	1 phase 230V, 60Hz	1
41	510 43 17-02	CABLE GROMMET		1

**H** HTC 400  
Accessories





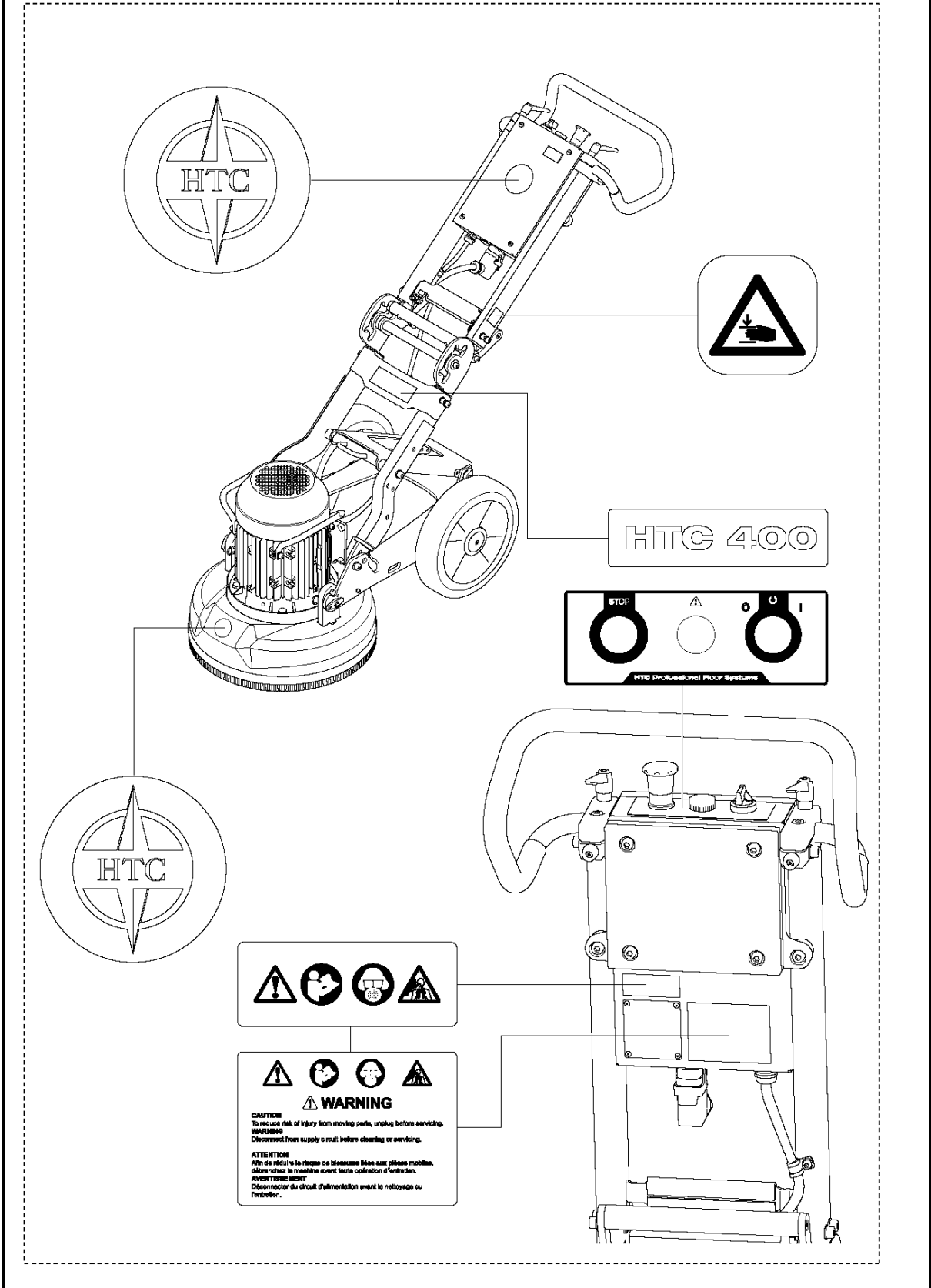
## ACCESSORIES

HTC 400, 2019-01

Ref	Part No	Description	Remark	QTY KIT
1	522 03 97-01	HAMMER		1
2	590 24 08-01	EXTENSION CABLE	US 1-phase	1
3	597 30 74-02	WIRE		1

**HTC 400**  
Decal

1



DECALS

HTC 400, 2019-01

Ref	Part No	Description	Remark	QTY KIT
1	597 24 87-04	DECAL SYSTEM		1