

K950 Ring

Reservdelar

Spare parts

Ersatzteile

Pieces de rechange

Piezas de repuesto

Ricambi

Peças sobresselente

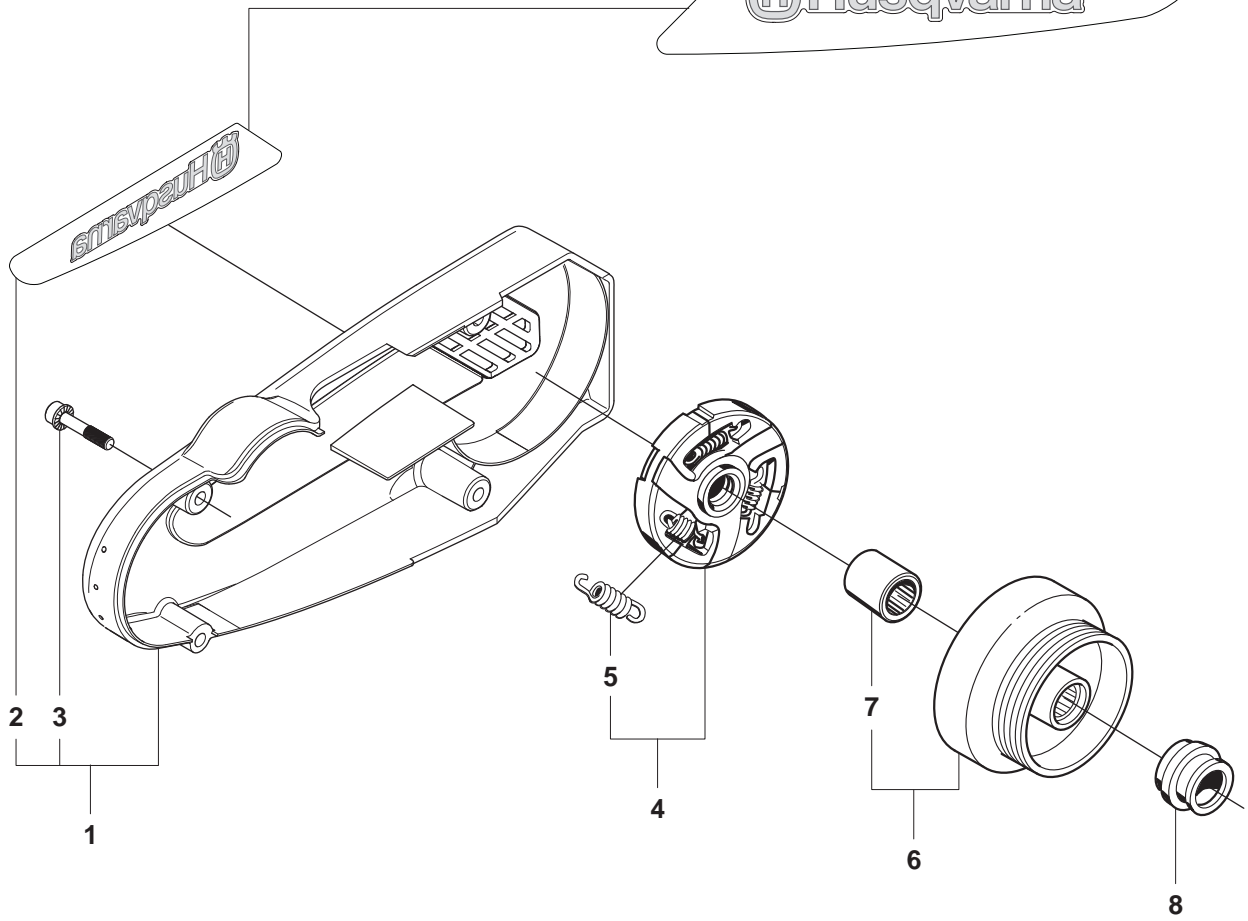
No.	Pos.	Description	No.	Pos.	Description
501 19 22-01	R	TOOL CASING	503 46 85-01	K	AV-ELEMENT
501 22 03-01	Q	WELCH PLUG(LARGE)	503 53 36-01	Q	DIAPHRAGM COVER
501 22 04-01	Q	CHOKE FRICTION BALL	503 53 39-01	Q	TUBE CONNECTOR
501 22 05-01	Q	SPRING	503 56 00-02	D	HOSE CLAMP
501 22 12-01	Q	FUEL PUMP DIAPHRAM	503 57 76-02	K	FUEL HOSE
501 22 13-01	Q	FUEL PUMP GASKET	503 57 86-01	Q	SPEED SCREW RET BALL
501 22 15-01	Q	SCREW	503 57 87-01	Q	IDLE SPEED SCREW
501 22 20-01	Q	LEVER	503 57 89-01	K	HOLDER TANK CAP
501 22 21-01	Q	PIN RETAINING SCREW	503 66 56-01	G	DECOMPRESSION VALVE
501 22 25-01	Q	SPRING	503 67 80-01	D	SUPPORT SLEEVE
501 48 52-01	Q	PIN RETAINING SCREW	503 70 15-01	A	CLUTCH ASSY
501 48 54-02	F	SPARK PLUG CAP	503 78 26-74	H	CRANKSHAFT ASSY
501 63 48-01	F	SPRING	503 98 82-01	Q	SCREEN
501 67 32-03	F	PAWL	505 27 75-16	F	INSULATING CAP
501 69 17-02	R	COMBINATION TOOL	505 31 65-50	Q	INLET NEEDLE
501 76 83-05	K	FUEL HOSE	506 03 32-02	J	SCREW
501 76 83-31	K	FUEL HOSE	506 09 56-02	L	HOSE CLAMP
501 81 99-01	F	SCREW	506 09 56-03	L	HOSE CLAMP
501 82 18-01	Q	"THROTTLE SH.""E""RING"	506 09 58-04	L	HOSE
501 83 98-01	F	CABLE	506 13 35-01	D	CARBURETTOR BRACKET
502 21 58-01	R	L SPANNER	506 13 95-11	N	WASHER
502 41 22-01	L	HOSE CLAMP	506 13 96-01	N	COLLAR SCREW
503 12 79-01	E	STARTER HANDLE	506 15 55-06	G	CYLINDER ASSY
503 14 51-01	A	CLUTCH SPRING	506 15 56-02	G	PISTON ASSY
503 20 00-45	N	SCREW COLLAR	506 15 82-01	GJR	CYLINDER BASE GASKET
503 20 02-16	CDGK	SCREW	506 16 91-01	G	COOLING PLATE
503 20 02-30	C	SCREW	506 17 83-03	N	GEAR WHEEL
503 20 02-55	D	SCREW	506 22 17-02	C	AIR FILTER COVER
503 20 03-80	N	SCREW	506 22 18-15	C	FILTER BOTTOM
503 20 07-16	J	SCREW	506 22 19-01	D	INLET PIPE
503 20 13-18	MP	COLLAR SCREW	506 22 22-02	E	AIR CONDUCTOR
503 20 25-20	F	SCREW	506 22 27-03	K	THROTTLE TRIGGER
503 20 34-19	A	SCREW	506 22 28-02	K	THROTTLE LOCKOUT
503 20 34-42	C	SCREW	506 22 29-01	K	SPRING THROTTLE TRIG
503 20 54-35	M	SCREW	506 22 31-01	D	THROTTLE WIRE
503 20 59-20	E	SCREW	506 22 39-01	D	FLANGE
503 21 05-22	KL	SCREW	506 22 94-01	C	AIR NOZZLE
503 21 05-45	K	SCREW	506 23 12-01	D	ADJUSTING GUIDE
503 21 06-19	L	SCREW	506 23 19-01	C	PREFILTER
503 21 28-06	F	SCREW	506 23 20-11	D	CHOKE
503 21 28-10	E	SCREW	506 23 24-01	GJR	GASKET CRANKCASE
503 21 46-01	L	SCREW	506 23 59-11	E	STARTER CPL
503 21 67-22	E	SCREW	506 23 61-01	K	TANK VENT
503 22 00-01	MN	NUT FLANGE	506 23 75-02	K	VIB.INSULATOR
503 22 10-11	F	NUT	506 24 39-02	C	LABEL
503 23 00-42	F	WASHER STEEL	506 24 69-05	L	BLADE GUARD
503 23 01-01	F	WASHER STEEL	506 25 14-01	E	RECOIL SPRING
503 23 01-12	N	WASHER STEEL	506 25 30-01	E	GROMMET
503 23 04-01	N	WASHER	506 25 59-03	K	TANK CAP ASSY
503 23 04-02	G	WASHER	506 25 64-02	Q	INSERT
503 23 04-03	M	WASHER	506 25 73-01	N	COMPRESSION SPRING
503 23 51-08	F	SPARK PLUG	506 25 81-02	E	COMPRESSION SPRING
503 25 00-02	HJ	BALL BEARING	506 25 84-01	Q	DIAPHRAGM
503 25 21-01	N	BALL BEARING	506 25 85-01	Q	DIAPHRAGM
503 25 24-01	BMP	BALL BEARING	506 25 88-01	Q	DIAPHRAGM
503 25 38-01	A	NEEDLE BEARING	506 25 89-01	E	STARTER PULLEY
503 25 61-01	GH	NEEDLE BEARING	506 26 22-02	L	WHEEL
503 26 02-05	GJR	SEALING RING	506 26 31-01	E	SPACING SLEEVE
503 26 20-01	MP	SEALING RING	506 26 41-01	K	FUEL FILTER
503 26 21-01	N	SEALING RING	506 26 41-11	K	FUEL FILTER CPL
503 26 30-08	M	O-RING	506 27 11-01	K	HOSE CLAMP
503 26 30-21	L	O-RING	506 27 14-01	Q	MET.RETENTION SCREW
503 26 30-22	N	O-RING	506 27 23-02	E	LABEL
503 26 30-25	L	O-RING	506 27 25-01	D	WEAR PROTECTION
503 26 30-26	M	O-RING	506 27 27-10	F	FLYWHEEL
503 26 60-02	L	COUPLER	506 27 31-01	J	BUFFER
503 28 04-02	DQ	CARBURETTOR	506 27 63-01	Q	REPAIR PARTS KIT
503 28 90-24	G	PISTON RING	506 27 75-01	N	PULLEY
503 40 06-07	D	IMPULSE HOSE	506 28 01-01	A	DRIVING PULLEY ASSY
503 45 46-01	K	CONNECTION BEND	506 28 03-05	M	COVER

No.	Pos.	Description	No.	Pos.	Description
506 28 06-02	B	BELT TENSIONER ASSY	506 36 52-01	D	AIR HORN
506 28 07-04	J	CRANKCASE CPL	506 37 28-02	G	MUFFLER ASSY
506 28 09-02	A	BELT GUARD	506 37 46-02	N	FLANGE WASHER
506 28 39-30	C	SEALING	506 37 47-01	N	SEALING COLLAR
506 28 53-01	K	VIB.INSULATOR	506 37 48-01	N	SEALING HOLDER
506 28 59-01	A	SPACING SLEEVE	506 37 49-01	N	SLEEVE
506 28 63-01	Q	SPRING THROTT.RETURN	506 37 50-02	N	SPACER
506 28 68-01	Q	FUEL PUMP COVER	506 37 63-01	M	SPACER
506 28 95-01	K	NIPPLE	506 37 64-01	M	RUBBER BUSHING
506 29 05-04	GJR	GASKET KIT	506 37 81-01	GJR	GASKET
506 29 09-01	Q	THROTTLE SHAFT(KIT)	506 37 93-02	MP	SPACING SLEEVE
506 29 10-01	Q	SEALING, KIT	506 38 09-01	P	BEARING CAGE
506 29 11-01	Q	CHOKE SHAFT (KIT)	506 38 11-01	P	CAP
506 29 13-01	Q	JET (KIT)	506 38 21-02	P	KNOB
506 29 21-01	K	GASKET	506 38 22-02	P	KNOB
506 29 23-01	L	DRAW SPRING	506 38 23-01	P	ENGAGEMENT ROLLER CPL
506 29 57-01	L	NIPPLE	506 38 29-01	L	NIPPLE
506 29 67-01	B	BELT	506 38 33-01	L	WATER BLADE
506 29 78-02	K	HANDLE	506 38 37-02	R	S SPANNER
506 29 88-01	L	FILTER	506 38 49-02	R	LUBRICATION GUN
506 30 14-02	M	ADJUSTING SCREW	506 38 78-34	F	IGNITION CABLE
506 30 29-01	P	SHAFT	506 38 90-05	N	CHASSIS CPL.
506 30 29-02	M	SHAFT	506 38 97-01	P	PIN
506 30 33-01	P	SPACING SLEEVE	506 39 95-01	M	SEALING
506 30 33-02	M	SPACING SLEEVE	544 00 31-04	L	WATER HOSE KIT
506 30 34-01	MP	DRIVER	544 01 88-01	F	IGNITION SYSTEM
506 30 35-01	P	BUMPER	544 07 76-01	NP	SLEEVE
506 31 22-02	N	DRIVER	544 08 04-02	R	GREASE TUBE
506 31 28-01	L	COVER PLATE	544 09 64-01	J	BELT GUIDE
506 31 45-01	L	SPACER TUBE	544 09 77-01	J	BUSHING
506 31 68-01	P	SPACING SLEEVE	544 38 31-01	K	SPRING
506 31 68-02	M	SPACING SLEEVE	544 87 25-01	A	LABEL
506 31 69-01	P	DUST COVER	544 87 44-01	C	LABEL
506 31 77-31	L	VALVE ASSY	544 87 44-02	C	LABEL
506 31 86-02	F	STOP SWITCH	544 87 44-03	C	LABEL
506 32 17-01	M	WASHER	544 87 46-01	C	LABEL
506 32 80-01	N	LOCKING BUTTON	544 88 62-02	S	SHORT BLOCK
506 33 08-01	M	THREAD BUSHING	544 89 07-03	C	LABEL
506 33 49-02	L	SPACER TUBE	544 89 14-02	C	CYLINDER COVER ASSY
506 33 49-03	M	SPACER TUBE	544 89 20-05	K	FUEL TANK
506 33 51-01	B	ROLLER	720 12 40-20	K	PARALLEL PIN
506 33 52-01	B	SPACER	720 13 07-10	J	PIN
506 33 53-01	B	LEVER	721 12 52-70	N	PIN
506 33 53-02	B	LEVER	721 42 52-50	N	SPRING PIN
506 33 54-01	B	SPACER	721 44 06-00	N	PIN
506 33 56-15	E	STARTER CORD	725 52 95-55	L	SCREW
506 33 56-50	E	STARTER CORD	725 53 27-55	N	SCREW
506 33 65-01	P	SEALING RING	725 53 29-55	MN	SCREW
506 33 72-03	E	STARTER COVER	725 53 31-56	L	SCREW
506 33 95-01	L	DRAW SPRING	725 53 40-55	J	SCREW
506 33 96-01	L	BOLT	725 53 42-55	J	SCREW
506 34 39-01	N	WIPER	725 53 72-55	BG	SCREW
506 34 39-01	P	WIPER	725 53 76-56	L	SCREW
506 34 63-01	M	WASHER	725 53 78-55	B	SCREW
506 34 64-01	M	SCREW	725 53 79-56	L	SCREW
506 34 70-02	C	AIR FILTER	725 53 81-56	M	SCREW
506 34 76-01	P	COMPRESSION SPRING	725 54 59-05	N	SCREW
506 34 90-01	L	SEALING	729 52 89-71	L	SCREW
506 34 91-01	J	BRACKET ASSY	732 21 16-01	B	NUT
506 35 15-02	N	DRIVE SHAFT	734 48 80-01	L	WASHER
506 35 18-06	M	LEVER	735 31 08-00	N	CIRCLIP
506 35 19-02	MN	WEAR PROTECTION	735 31 28-10	BMP	CIRCLIP
506 35 20-02	P	ROLLER	737 44 13-00	G	CIRCLIP
506 35 21-02	M	SUPPORT ROLLER	738 88 10-01	N	LUBRICATION NIPPLE
506 35 22-04	L	SPRAY GUARD	740 42 04-00	M	O-RING
506 35 23-03	N	DRIVE WHEEL ASSY	740 42 05-00	L	O-RING
506 35 27-01	L	PROTECTIVE SPRING	740 42 24-00	N	O-RING
506 35 52-01	R	TOOL	740 43 13-00	E	O-RING
506 36 36-01	R	L SPANNER	740 48 20-03	C	O-RING
506 36 38-02	R	TOOL SET	740 48 20-12	P	O-RING

No.	Pos.	Description	No.	Pos.	Description
740 48 25-02	NP	O-RING			

A K950 RING

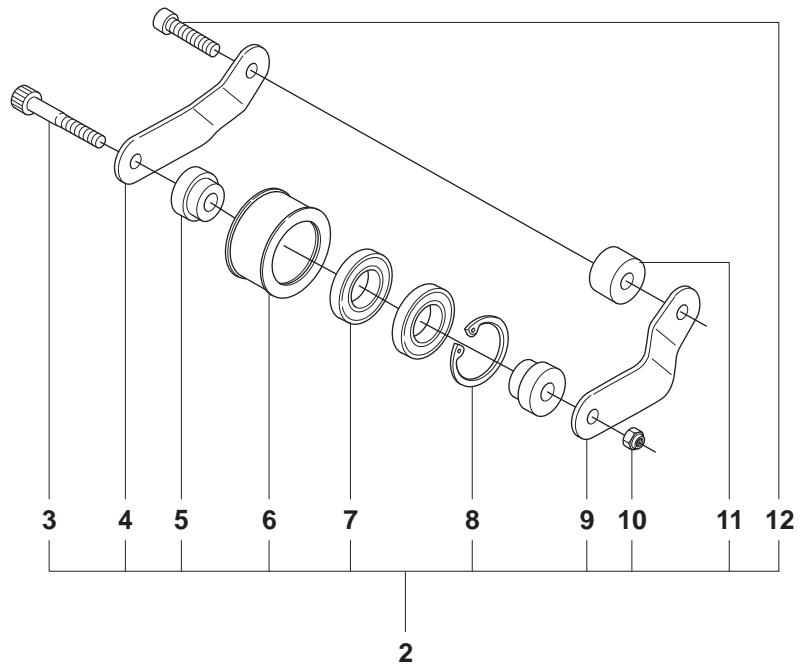
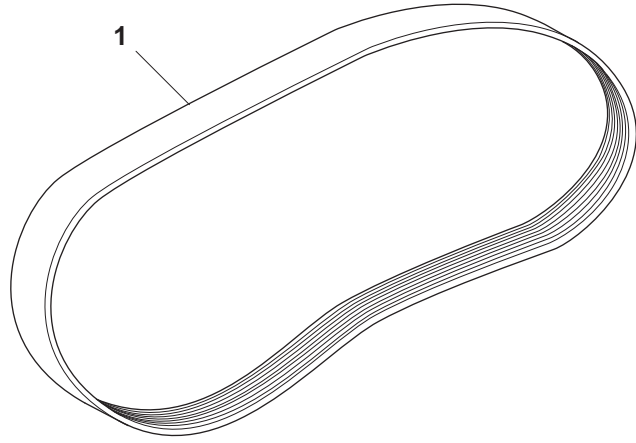
 Husqvarna



Page A
K950 Ring

Pos.	Part No.	Description	Quantity	Notes	New Part
1	506 28 09-02	BELT GUARD	1	Incl. 2, 3	
2	544 87 25-01	LABEL	1		
3	503 20 34-19	SCREW	4		
4	503 70 15-01	CLUTCH ASSY	1	Incl. 5	
5	503 14 51-01	CLUTCH SPRING	3		
6	506 28 01-01	DRIVING PULLEY ASSY	1	Incl. 7	
7	503 25 38-01	NEEDLE BEARING	1		
8	506 28 59-01	SPACING SLEEVE	1		

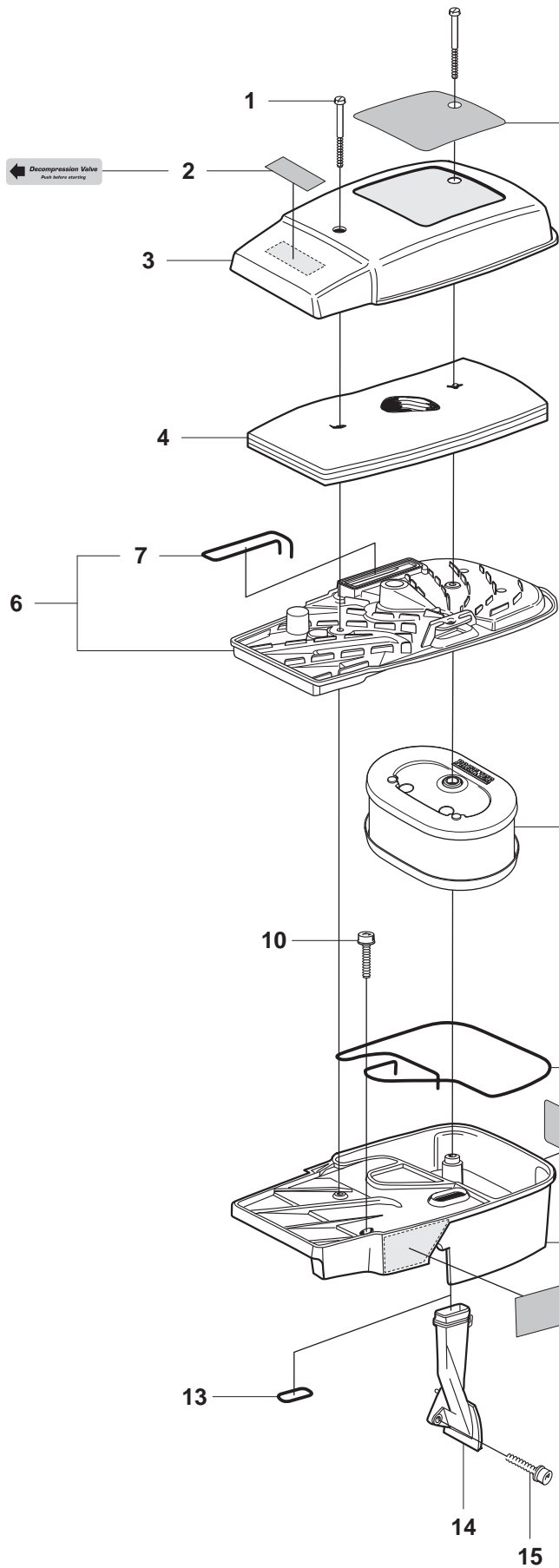
B K950 RING



Page B
K950 Ring

Pos.	Part No.	Description	Quantity	Notes	New Part
1	506 29 67-01	BELT	1		
2	506 28 06-02	BELT TENSIONER ASSY	1	Incl. 3 - 12	
3	725 53 78-55	SCREW	1		
4	506 33 53-02	LEVER	1		
5	506 33 52-01	SPACER	2		
6	506 33 51-01	ROLLER	1		
7	503 25 24-01	BALL BEARING	2		
8	735 31 28-10	CIRCLIP	1		
9	506 33 53-01	LEVER	1		
10	732 21 16-01	NUT	1		
11	506 33 54-01	SPACER	1		
12	725 53 72-55	SCREW	1		

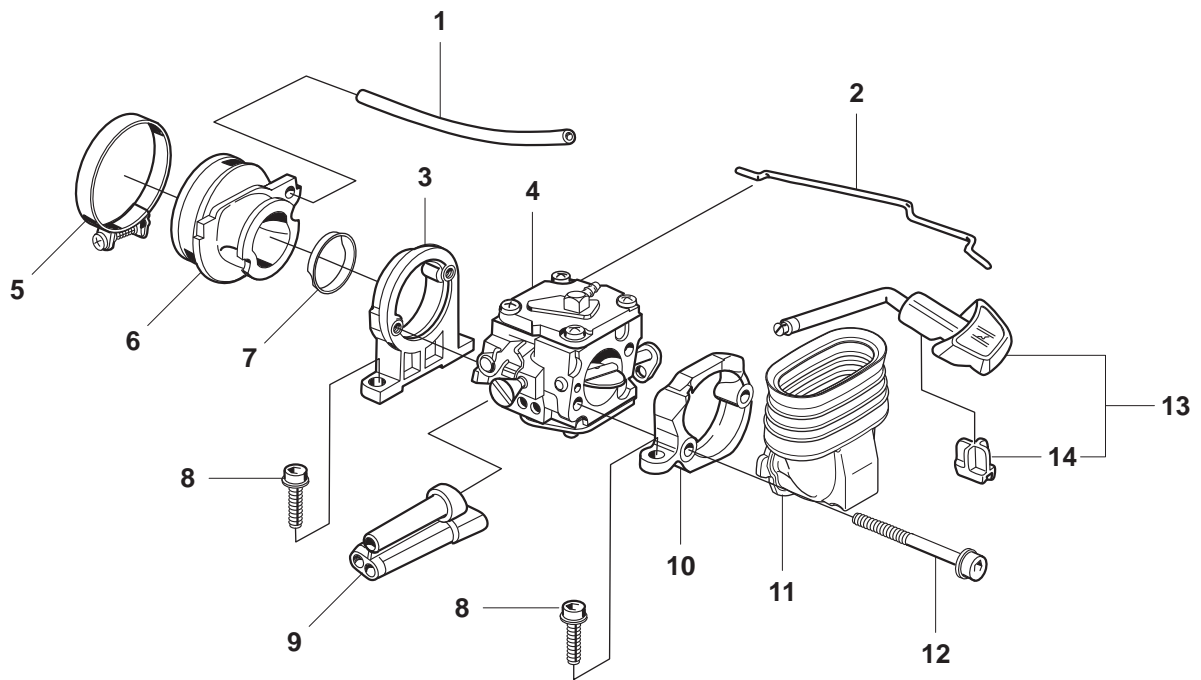
C K950 RING



Page C
K950 Ring

Pos.	Part No.	Description	Quantity	Notes	New Part
1	503 20 34-42	SCREW	2		
2	544 87 46-01	LABEL	1		
3	506 22 17-02	AIR FILTER COVER	1		
4	506 23 19-01	PREFILTER	1		
5	544 87 44-01	LABEL	1	EPA USA	
5	544 87 44-02	LABEL	1	CE	
5	544 87 44-03	LABEL	1	EPA Canada	
6	506 22 18-15	FILTER BOTTOM	1	Incl. 7	
7	506 28 39-30	SEALING	2		
8	506 34 70-02	AIR FILTER	1		
9	544 89 14-02	CYLINDER COVER ASSY	1	Incl. 7, 11	New Part
10	503 20 02-30	SCREW	3		
11	506 24 39-02	LABEL	1		
12	544 89 07-03	LABEL	1		
13	740 48 20-03	O-RING	1		
14	506 22 94-01	AIR NOZZLE	1		
15	503 20 02-16	SCREW	1		

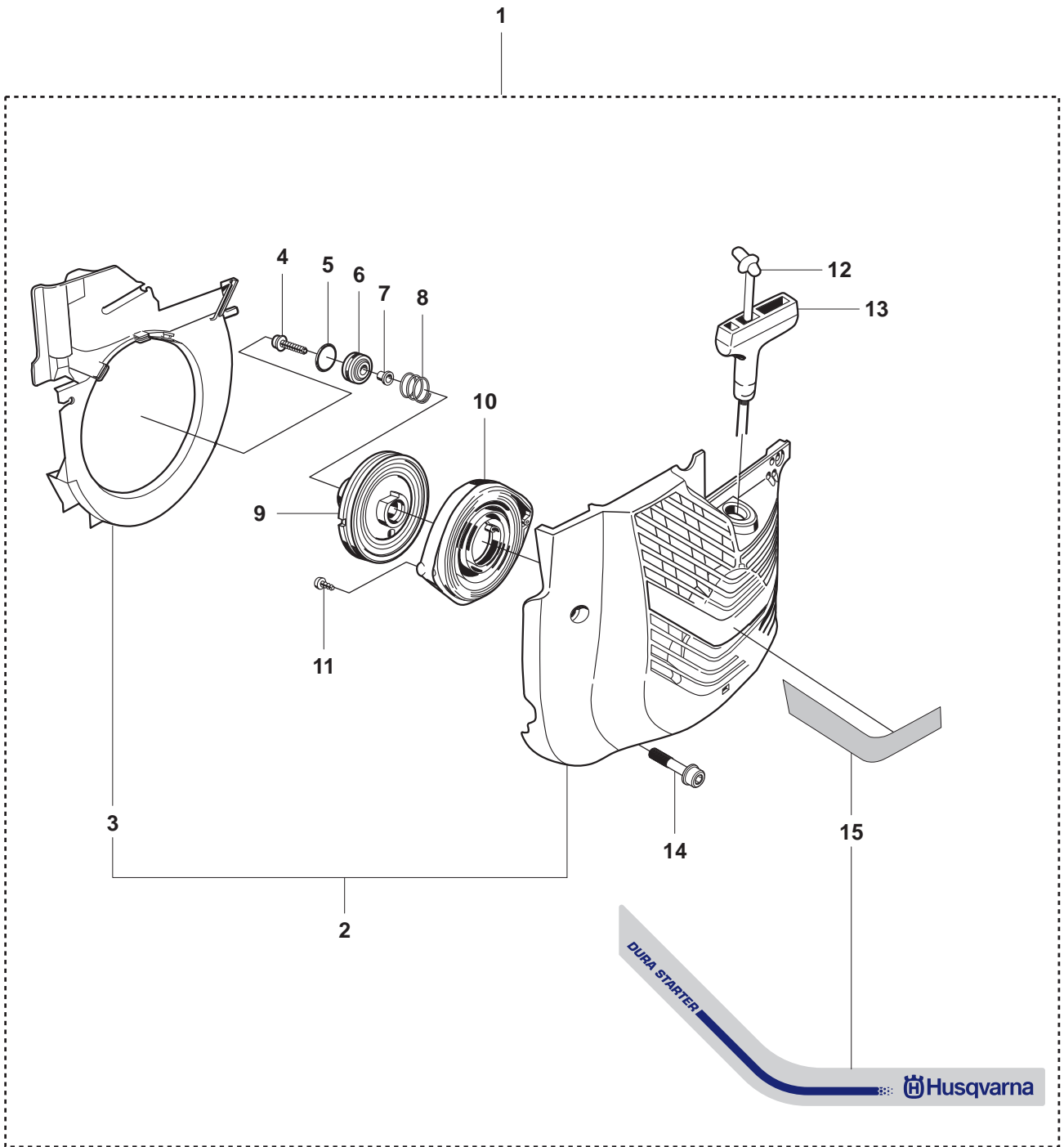
D K950 RING



Page D
K950 Ring

Pos.	Part No.	Description	Quantity	Notes	New Part
1	503 40 06-07	IMPULSE HOSE	1		
2	506 22 31-01	THROTTLE WIRE	1		
3	506 13 35-01	CARBURETTOR BRACKET	1		
4	503 28 04-02	CARBURETTOR	1	HS 282-A	
5	503 56 00-02	HOSE CLAMP	1		
6	506 22 19-01	INLET PIPE	1		
7	503 67 80-01	SUPPORT SLEEVE	1		
8	503 20 02-16	SCREW	2		
9	506 23 12-01	ADJUSTING GUIDE	1		
10	506 22 39-01	FLANGE	1		
11	506 36 52-01	AIR HORN	1		
12	503 20 02-55	SCREW	2		
13	506 23 20-11	CHOKE	1		
14	506 27 25-01	WEAR PROTECTION	1		

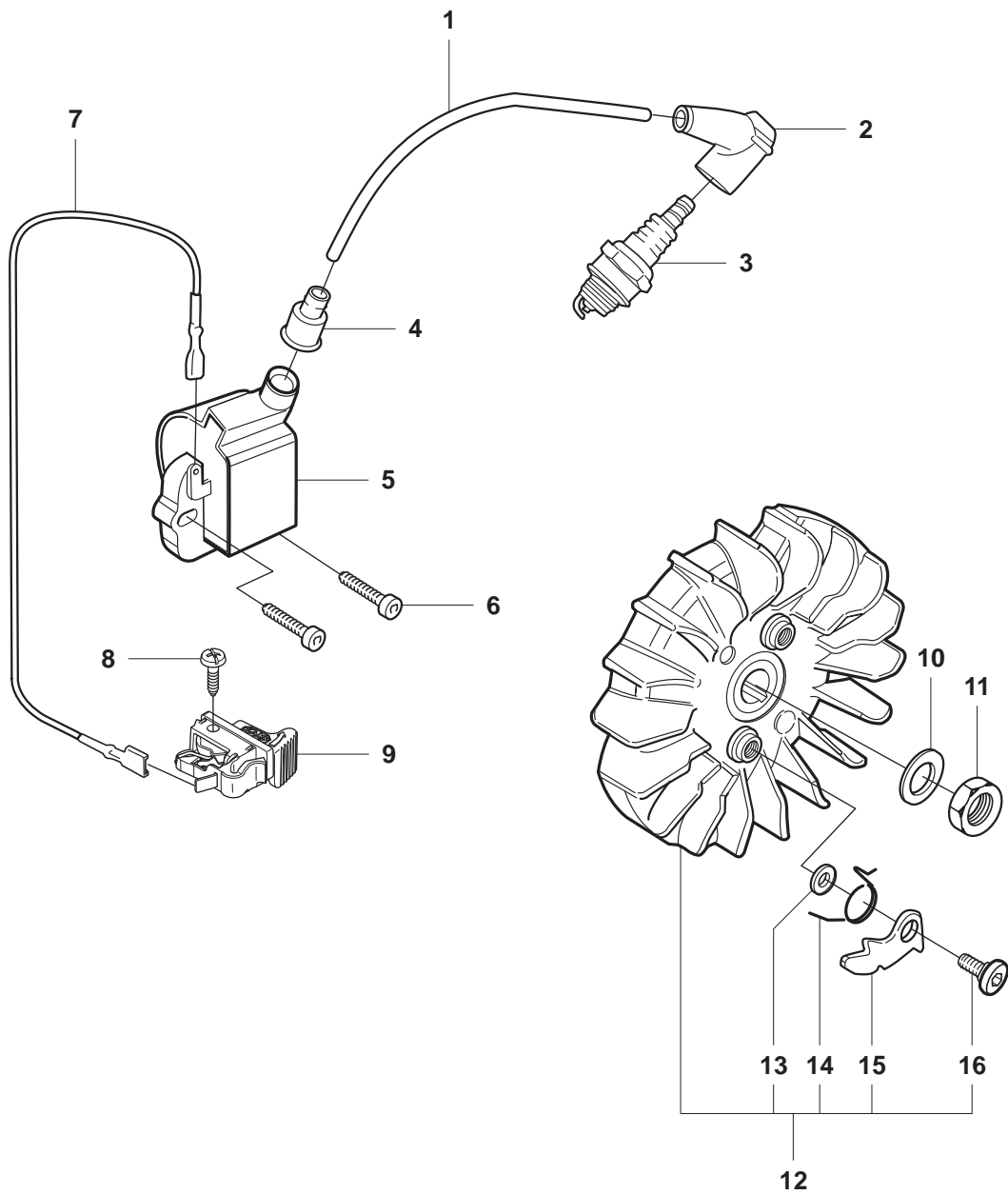
E K950 RING



Page E
K950 Ring

Pos.	Part No.	Description	Quantity	Notes	New Part
1	506 23 59-11	STARTER CPL	1	Incl. 2 -15	
2	506 33 72-03	STARTER COVER	1	Incl. 3	
3	506 22 22-02	AIR CONDUCTOR	1		
4	503 21 67-22	SCREW	1		
5	740 43 13-00	O-RING	1		
6	506 25 14-01	RECOIL SPRING	1		
7	506 26 31-01	SPACING SLEEVE	1		
8	506 25 30-01	GROMMET	1		
9	506 25 81-02	COMPRESSION SPRING	1		
10	506 25 89-01	STARTER PULLEY	1		
11	503 21 28-10	SCREW	2		
12	506 33 56-15	STARTER CORD	1		
12	506 33 56-50	STARTER CORD	1	50 m. coil	
13	503 12 79-01	STARTER HANDLE	1		
14	503 20 59-20	SCREW	4		
15	506 27 23-02	LABEL	1		

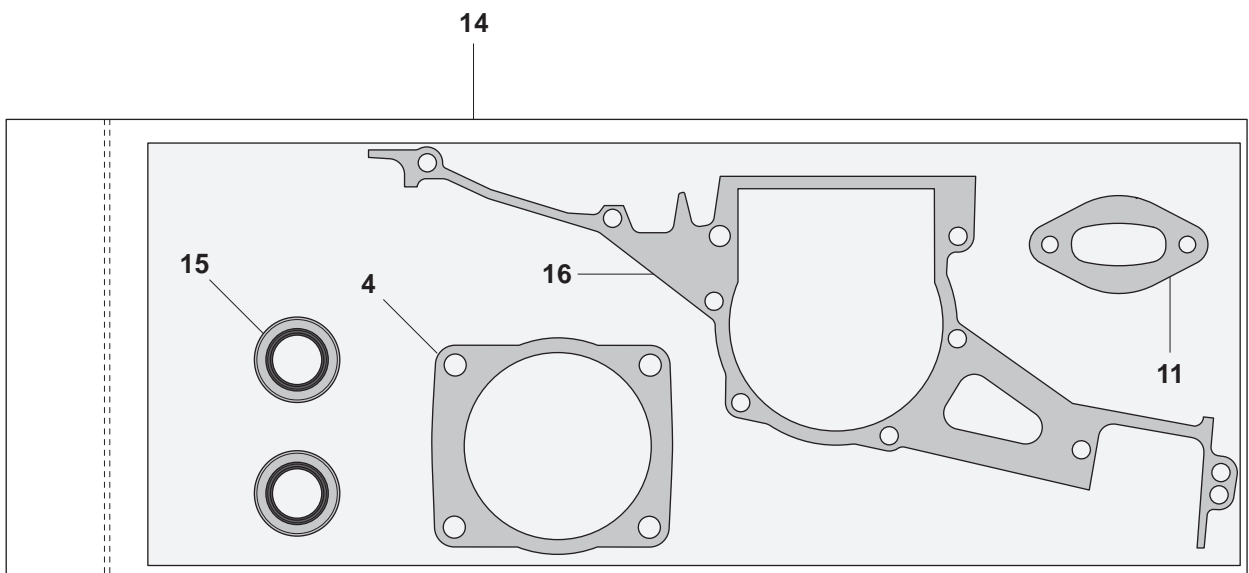
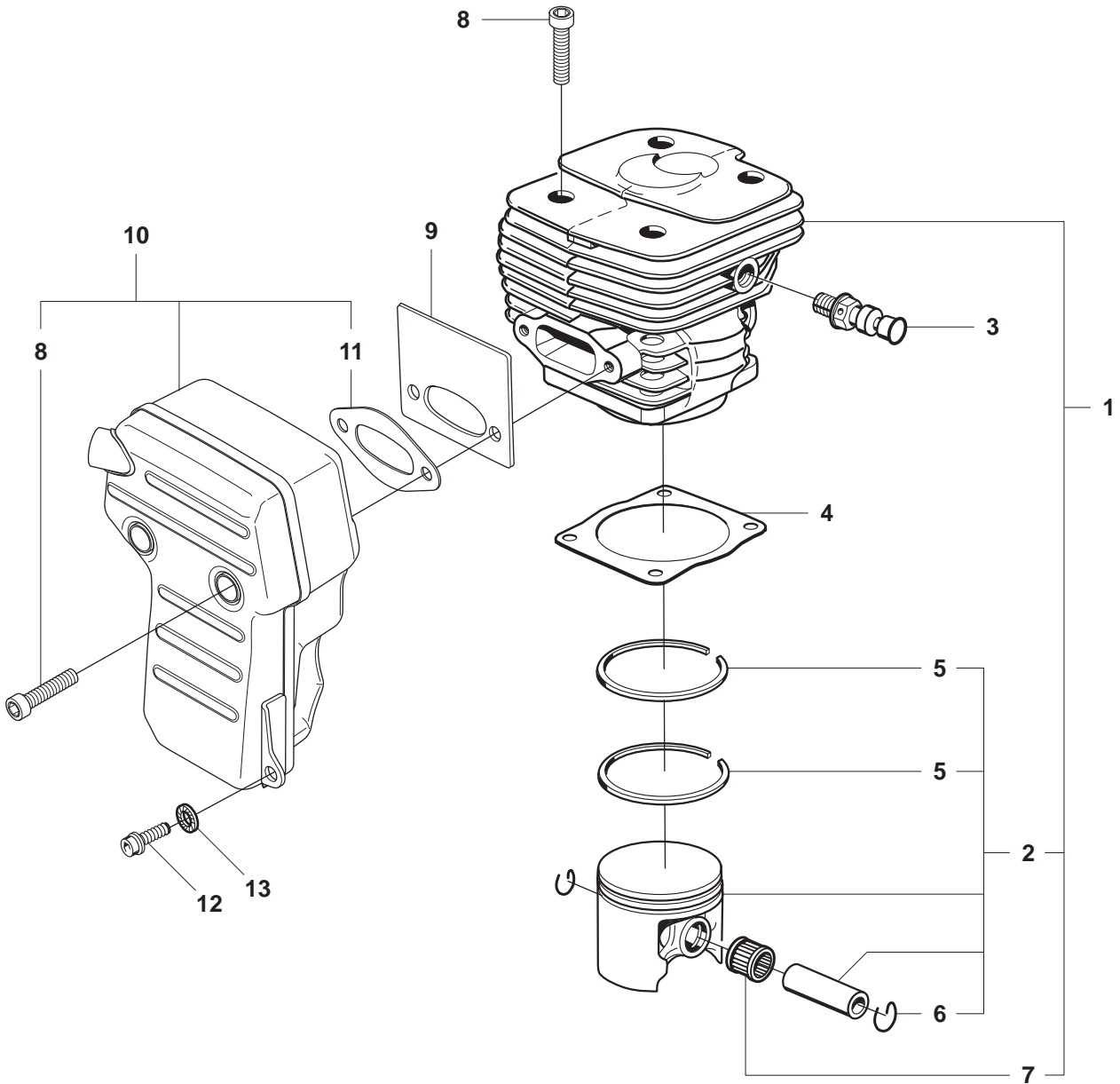
F K950 RING



Page F
K950 Ring

Pos.	Part No.	Description	Quantity	Notes	New Part
1	506 38 78-34	IGNITION CABLE	1		
2	501 48 54-02	SPARK PLUG CAP	1		
3	503 23 51-08	SPARK PLUG	1	RCJ 7Y	
4	505 27 75-16	INSULATING CAP	1		
5	544 01 88-01	IGNITION SYSTEM	1		
6	503 20 25-20	SCREW	2		
7	501 83 98-01	CABLE	1		
8	503 21 28-06	SCREW	1		
9	506 31 86-02	STOP SWITCH	1		
10	503 23 01-01	WASHER STEEL	1		
11	503 22 10-11	NUT	1		
12	506 27 27-10	FLYWHEEL	1	Incl. 13, 14, 15, 16	New Part
13	503 23 00-42	WASHER STEEL	2		
14	501 63 48-01	SPRING	2		
15	501 67 32-03	PAWL	2		
16	501 81 99-01	SCREW	2		

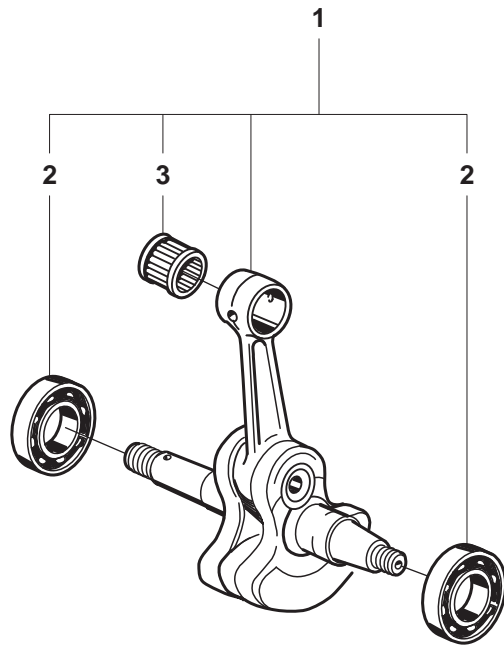
G K950 RING



Page G
K950 Ring

Pos.	Part No.	Description	Quantity	Notes	New Part
1	506 15 55-06	CYLINDER ASSY	1	Incl. 2, 7	
2	506 15 56-02	PISTON ASSY	1	Incl. 5, 6	
3	503 66 56-01	DECOMPRESSION VALVE	1		
4	506 15 82-01	CYLINDER BASE GASKET	1	Gasket kit 15	
5	503 28 90-24	PISTON RING	2		
6	737 44 13-00	CIRCLIP	2		
7	503 25 61-01	NEEDLE BEARING	1		
8	725 53 72-55	SCREW	6		
9	506 16 91-01	COOLING PLATE	1		
10	506 37 28-02	MUFFLER ASSY	1	Incl. 8, 11	New Part
11	506 37 81-01	GASKET	1	Gasket kit 15	New Part
12	503 20 02-16	SCREW	1		
13	503 23 04-02	WASHER	1		
14	506 29 05-04	GASKET KIT	1	Incl. 4, 12, 15, 16	
15	503 26 02-05	SEALING RING	2		
16	506 23 24-01	GASKET CRANKCASE	1		

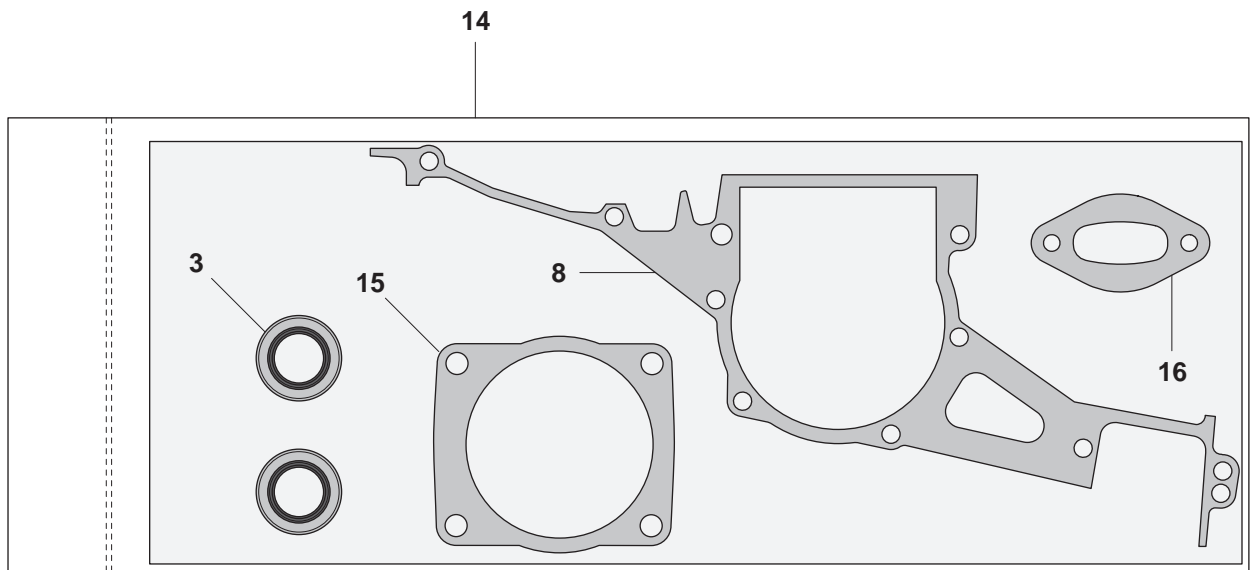
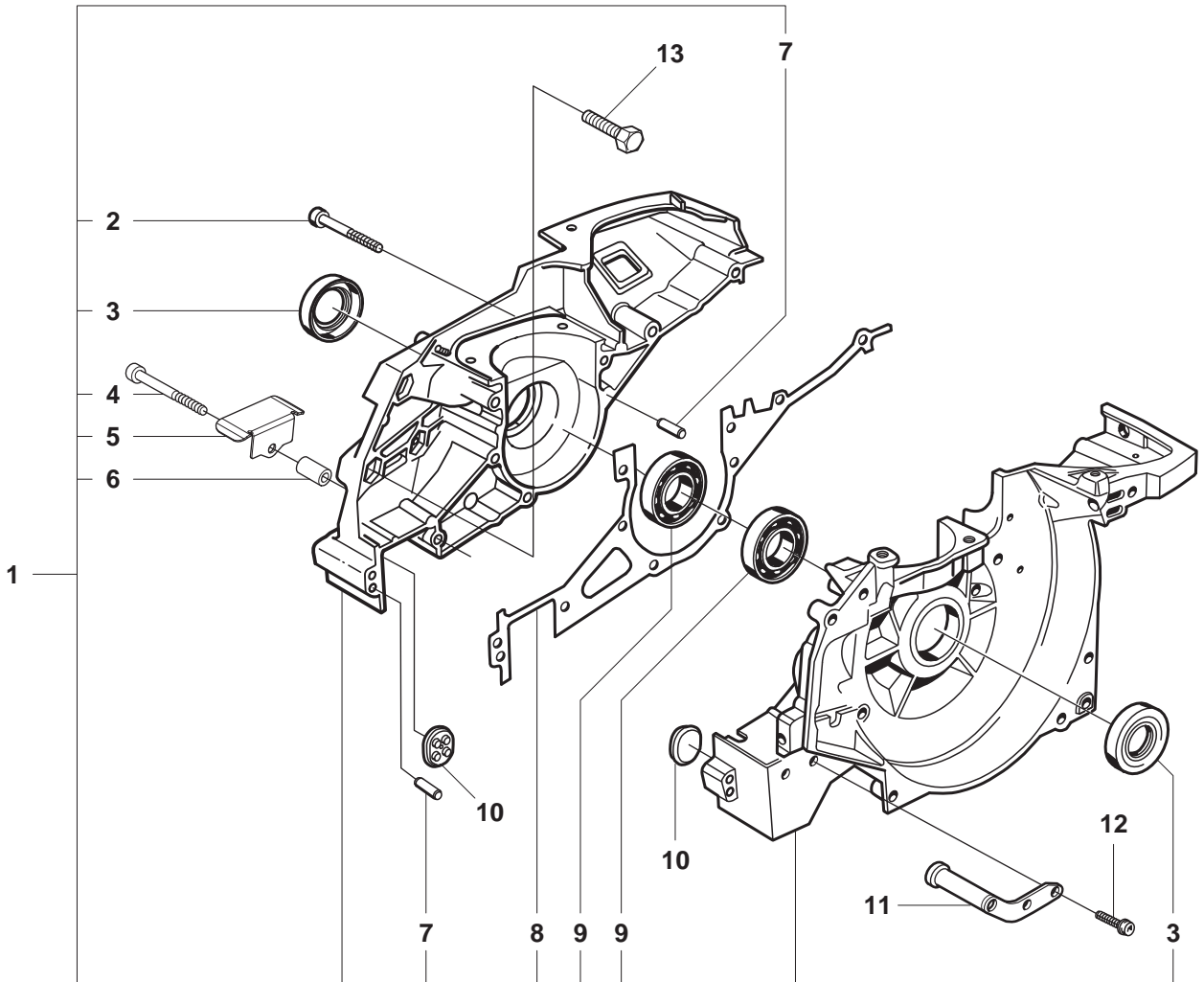
H K950 RING



Page H
K950 Ring

Pos.	Part No.	Description	Quantity	Notes	New Part
1	503 78 26-74	CRANKSHAFT ASSY	1	Incl. 2, 3	
2	503 25 00-02	BALL BEARING	2		
3	503 25 61-01	NEEDLE BEARING	1		

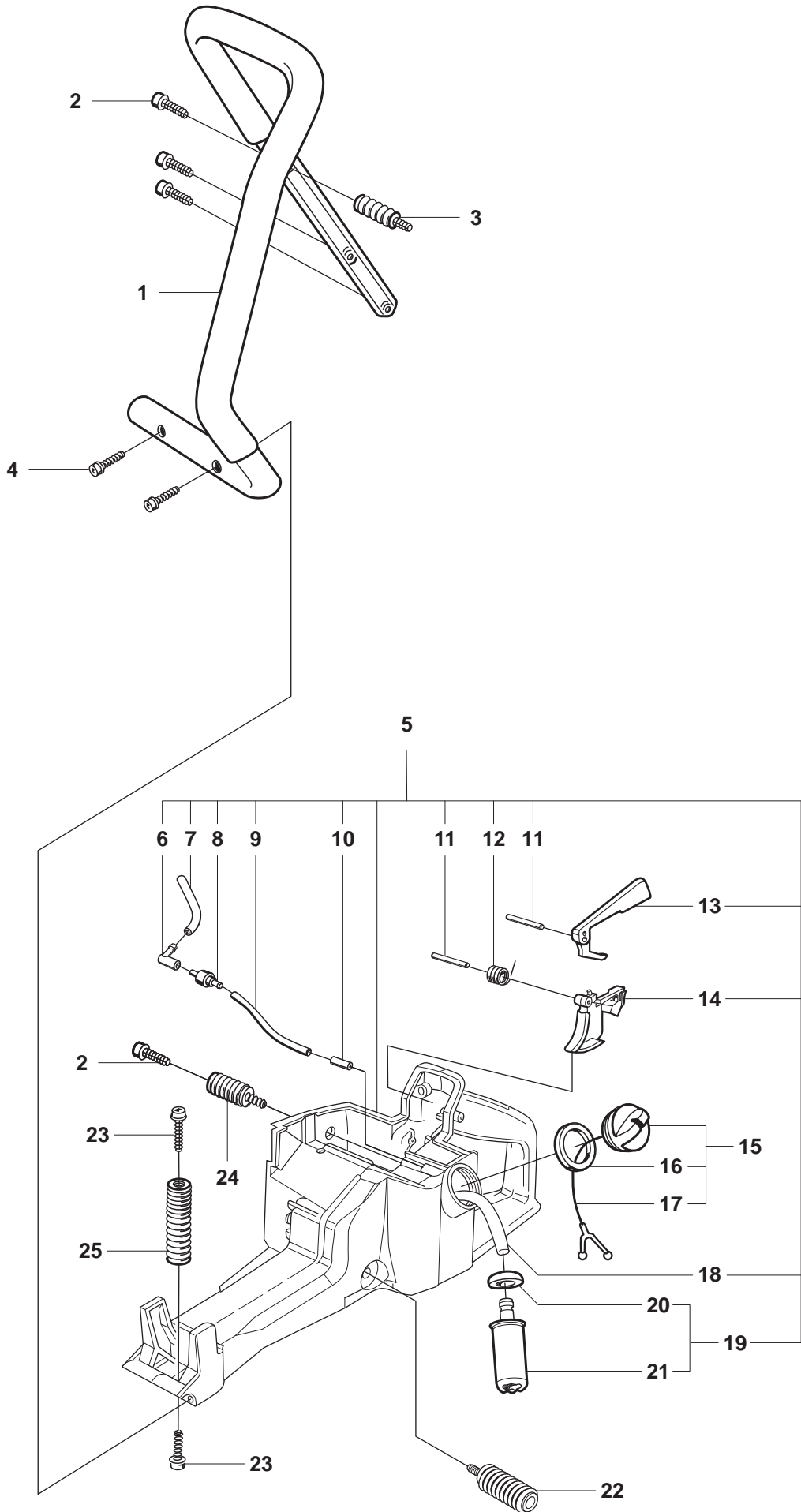
J K950 RING



Page J
K950 Ring

Pos.	Part No.	Description	Quantity	Notes	New Part
1	506 28 07-04	CRANKCASE CPL	1	Incl. 2 - 9	
2	725 53 40-55	SCREW	6		
3	503 26 02-05	SEALING RING	2	Gasket kit 14	
4	725 53 42-55	SCREW	1		
5	544 09 64-01	BELT GUIDE	1		
6	544 09 77-01	BUSHING	1		
7	720 13 07-10	PIN	2		
8	506 23 24-01	GASKET CRANKCASE	1	Gasket kit 14	
9	503 25 00-02	BALL BEARING	2		
10	506 27 31-01	BUFFER	2		
11	506 34 91-01	BRACKET ASSY	1		
12	503 20 07-16	SCREW	2		
13	506 03 32-02	SCREW	1		
14	506 29 05-04	GASKET KIT	1		
15	506 15 82-01	CYLINDER BASE GASKET	1		
16	506 37 81-01	GASKET MUFFLER	1		

K K950 RING

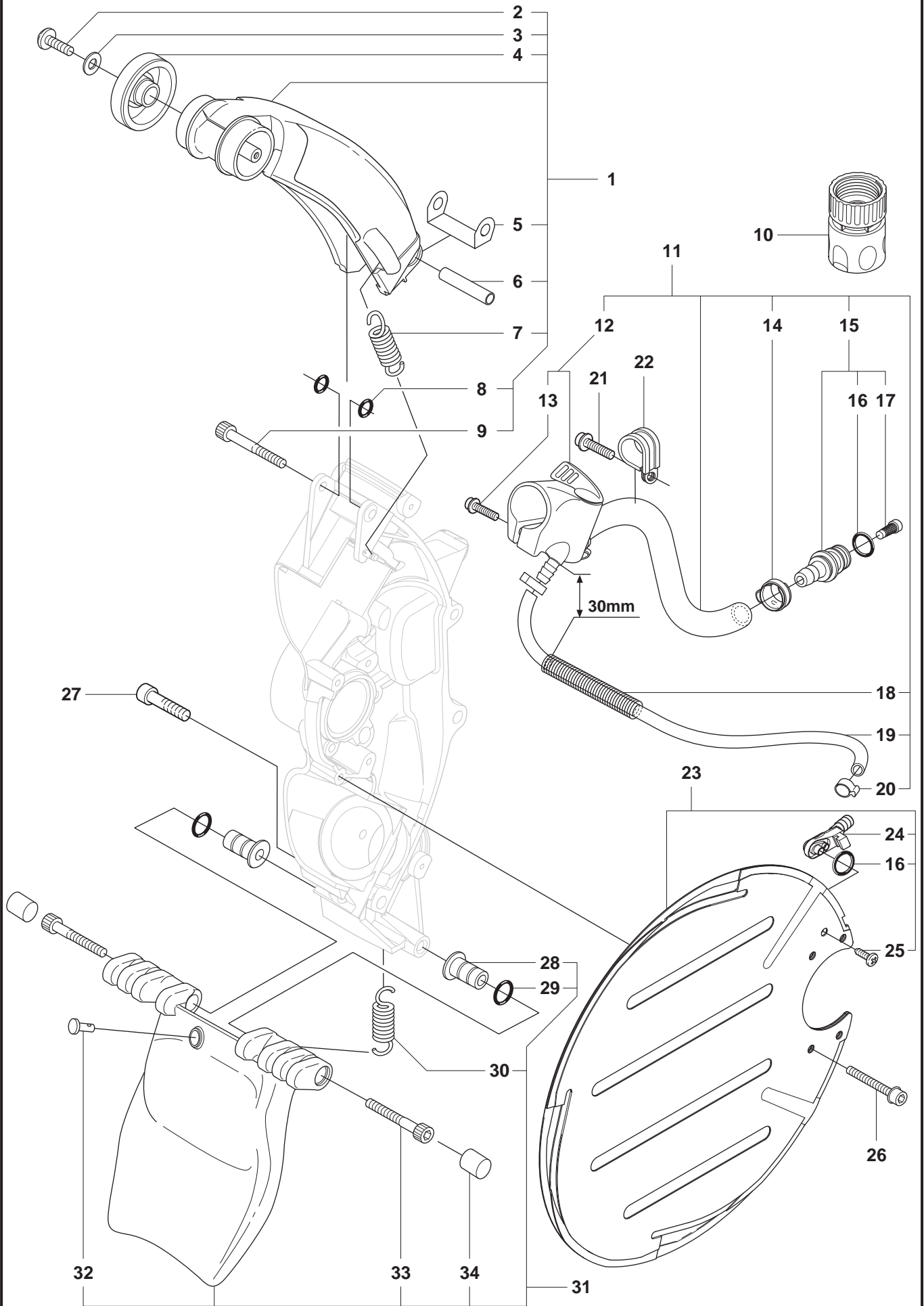


Page K
K950 Ring

Pos.	Part No.	Description	Quantity	Notes	New Part
1	506 29 78-02	HANDLE	1		
2	503 21 05-22	SCREW	4		
3	506 28 53-01	VIB.INSULATOR	1		
4	503 21 05-45	SCREW	2		
5	544 89 20-05	FUEL TANK	1	Incl. 6 - 15, 18, 19	New Part
6	503 45 46-01	CONNECTION BEND	1		
7	501 76 83-05	FUEL HOSE	1		
8	506 23 61-01	TANK VENT	1		
9	501 76 83-31	FUEL HOSE	1		
10	506 28 95-01	NIPPLE	1		
11	720 12 40-20	PARALLEL PIN	2		
12	506 22 29-01	SPRING THROTTLE TRIG	1		
13	506 22 28-02	THROTTLE LOCKOUT	1		
14	506 22 27-03	THROTTLE TRIGGER	1		
15	506 25 59-03	TANK CAP ASSY	1	Incl. 16, 17	
16	506 29 21-01	GASKET	1		
17	503 57 89-01	HOLDER TANK CAP	1		
18	503 57 76-02	FUEL HOSE	1		
19	506 26 41-11	FUEL FILTER CPL	1	Incl. 20, 21	
20	506 27 11-01	HOSE CLAMP	1		
21	506 26 41-01	FUEL FILTER	1		
22	544 38 31-01	SPRING	1		
23	503 20 02-16	SCREW	2		
24	506 23 75-02	VIB.INSULATOR	1		
25	503 46 85-01	AV-ELEMENT	1		



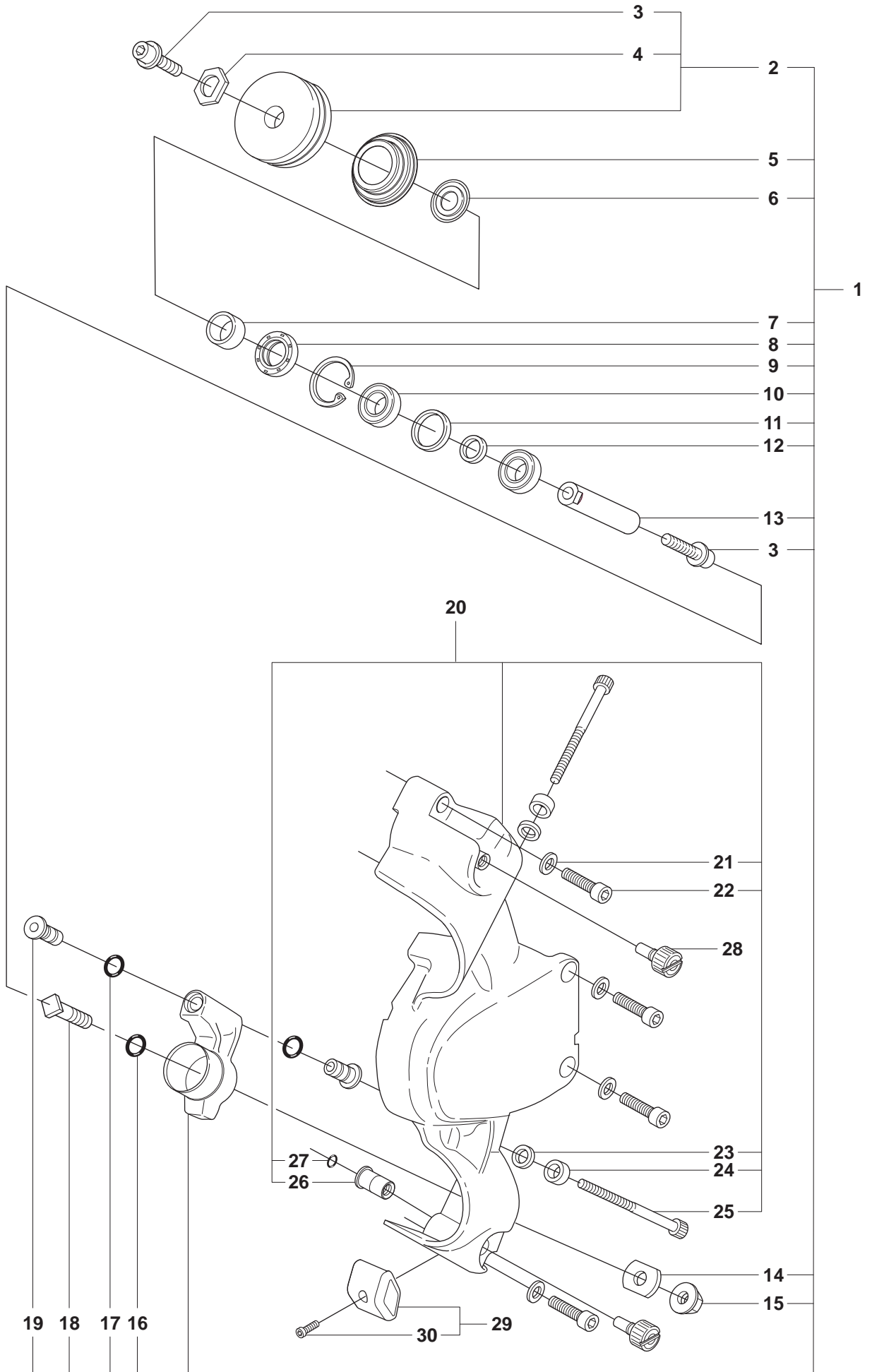
K950 RING



Page L
K950 Ring

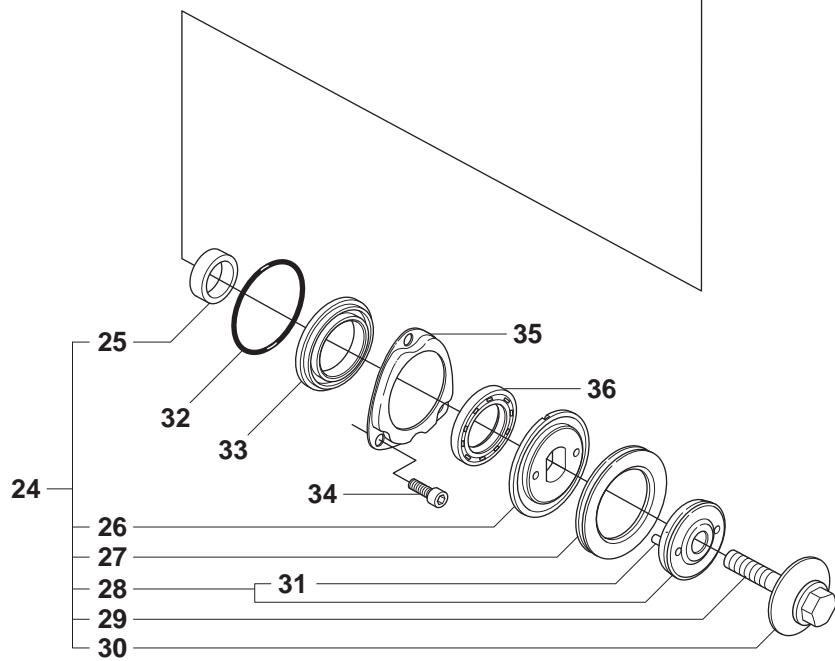
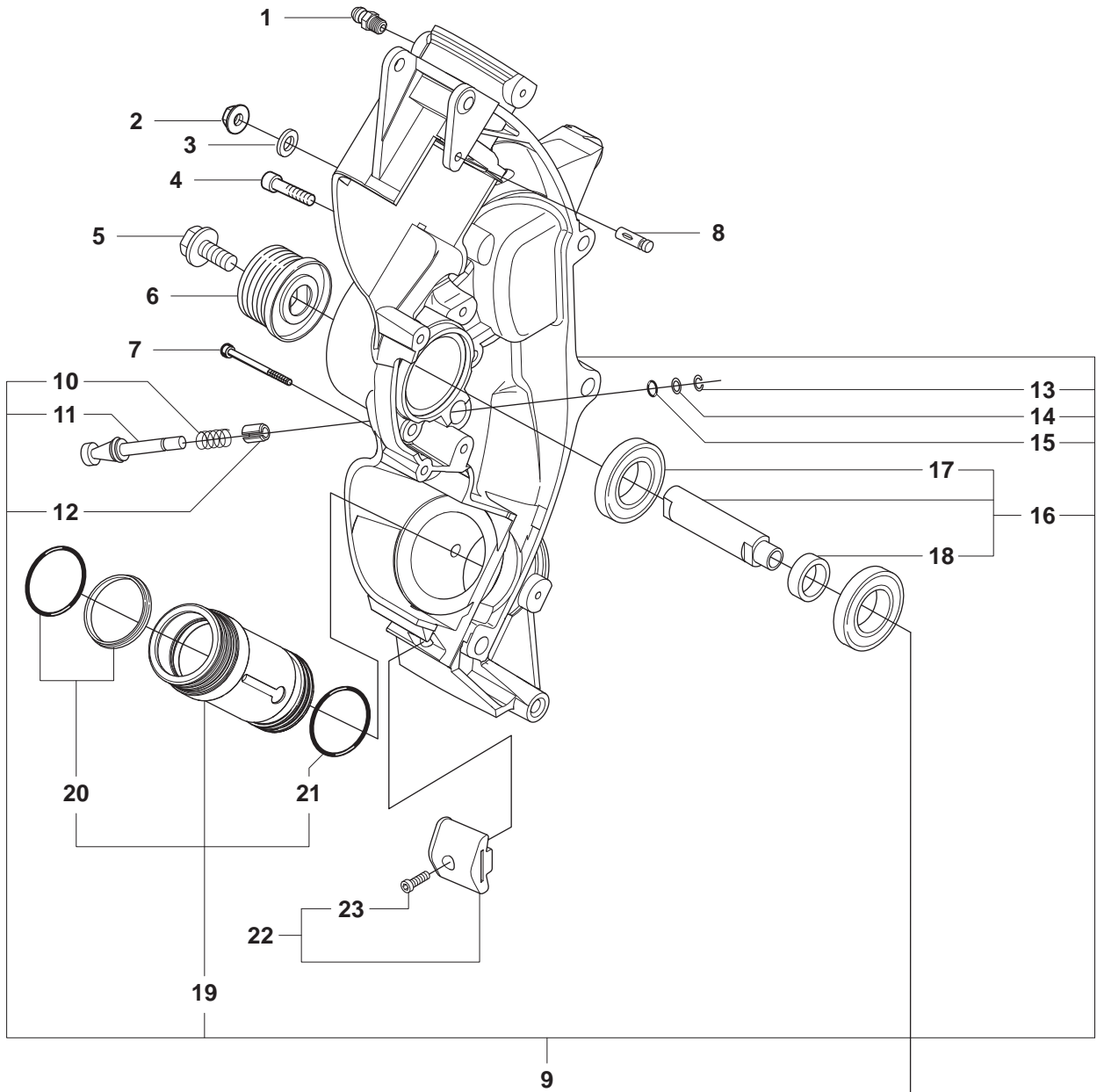
Pos.	Part No.	Description	Quantity	Notes	New Part
1	506 24 69-05	BLADE GUARD	1	Incl. 2, 3 - 9	
2	503 21 46-01	SCREW	2		
3	734 48 80-01	WASHER	2		
4	506 26 22-02	WHEEL	2		
5	506 31 28-01	COVER PLATE	1		
6	506 31 45-01	SPACER TUBE	1		
7	506 29 23-01	DRAW SPRING	1		
8	503 26 30-25	O-RING	2		
9	725 53 79-56	SCREW	1		
10	503 26 60-02	COUPLER	1		
11	544 00 31-04	WATER HOSE KIT	1	Incl. 12, 14 - 15, 18 - 20	
12	506 31 77-31	VALVE ASSY	1	Incl 13	
13	503 21 06-19	SCREW	2		
14	506 09 56-02	HOSE CLAMP	2		
15	506 29 57-01	NIPPLE	1	Incl. 16, 17	
16	503 26 30-21	O-RING	2		
17	506 29 88-01	FILTER	1		
18	506 35 27-01	PROTECTIVE SPRING	1		
19	506 09 58-04	HOSE	1		
20	506 09 56-03	HOSE CLAMP	2		
21	503 21 05-22	SCREW	1		
22	502 41 22-01	HOSE CLAMP	1		
23	506 38 33-01	WATER BLADE	1	Incl. 16, 25, 26	
24	506 38 29-01	NIPPLE	1		
25	729 52 89-71	SCREW	1		
26	725 53 31-56	SCREW	4		
27	725 52 95-55	SCREW	1		
28	506 33 49-02	SPACER TUBE	2		
29	740 42 05-00	O-RING	2		
30	506 33 95-01	DRAW SPRING	1		
31	506 35 22-04	SPRAY GUARD	1	Incl. 28 - 30, 32 - 34	
32	506 33 96-01	BOLT	1		
33	725 53 76-56	SCREW	2		
34	506 34 90-01	SEALING	2		

M K950 RING



Page M
K950 Ring

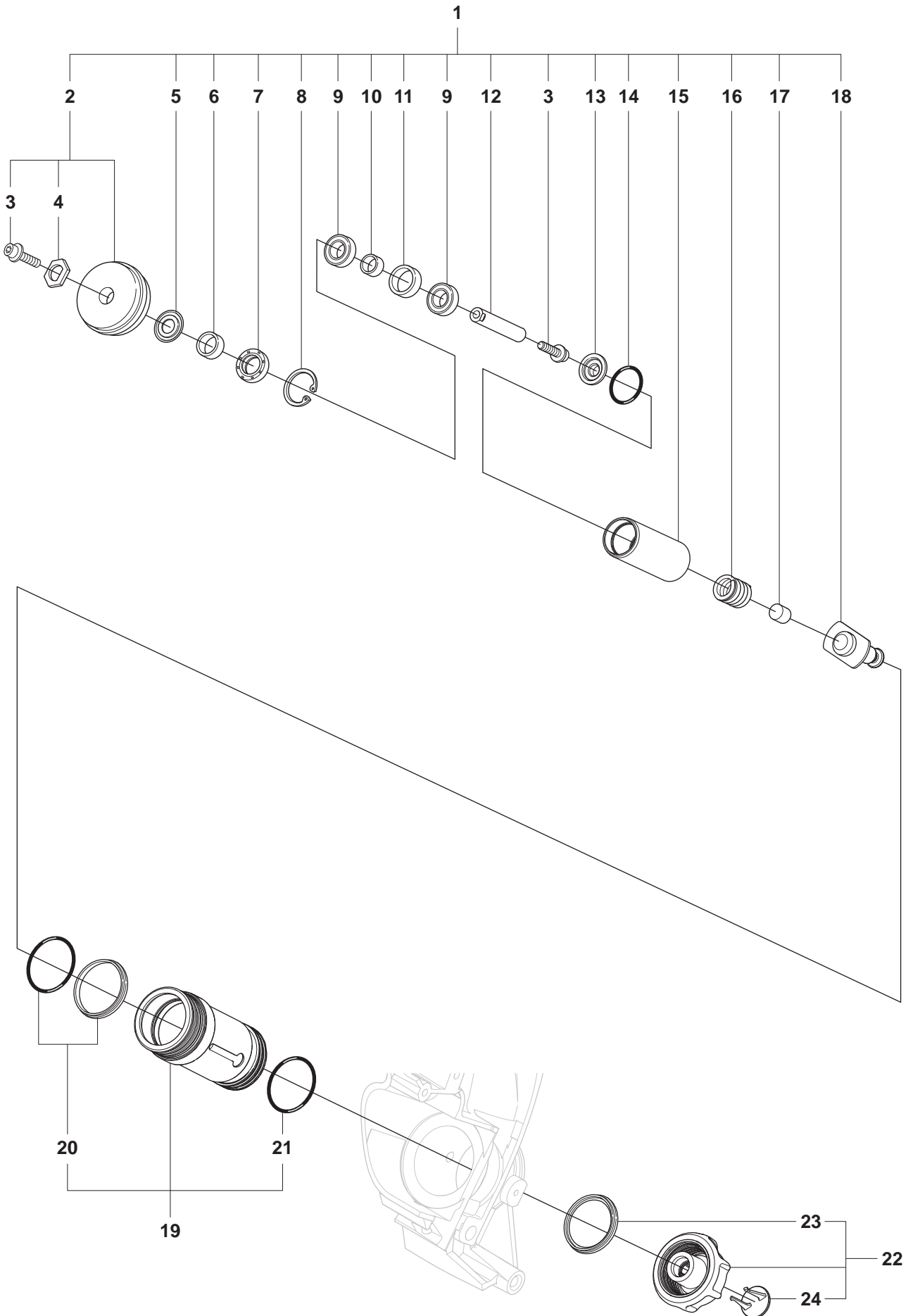
Pos.	Part No.	Description	Quantity	Notes	New Part
1	506 35 18-06	LEVER	1	Incl. 2, 5 - 19	
2	506 35 21-02	SUPPORT ROLLER	2	Incl. 3, 4	
3	503 20 13-18	COLLAR SCREW	2		
4	506 30 34-01	DRIVER	1		
5	506 39 95-01	SEALING	1		
6	506 32 17-01	WASHER	1		
7	506 37 93-02	SPACING SLEEVE	1		
8	503 26 20-01	SEALING RING	1		
9	735 31 28-10	CIRCLIP	1		
10	503 25 24-01	BALL BEARING	2		
11	506 31 68-02	SPACING SLEEVE	1		
12	506 30 33-02	SPACING SLEEVE	1		
13	506 30 29-02	SHAFT	1		
14	506 34 63-01	WASHER	2		
15	503 22 00-01	NUT FLANGE	2		
16	503 26 30-08	O-RING	2		
17	503 26 30-26	O-RING	4		
18	506 34 64-01	SCREW	2		
19	506 33 49-03	SPACER TUBE	4		
20	506 28 03-05	COVER	1	Incl. 21 - 27	
21	503 23 04-03	WASHER	4		
22	503 20 54-35	SCREW	4		
23	506 37 63-01	SPACER	2		
24	506 37 64-01	RUBBER BUSHING	2		
25	725 53 81-56	SCREW	2		
26	506 33 08-01	THREAD BUSHING	2		
27	740 42 04-00	O-RING	2		
28	506 30 14-02	ADJUSTING SCREW	2		
29	506 35 19-02	WEAR PROTECTION	1		
30	725 53 29-55	SCREW	1		

N**K950 RING**

Page N
K950 Ring

Pos.	Part No.	Description	Quantity	Notes	New Part
1	738 88 10-01	LUBRICATION NIPPLE	2		
2	503 22 00-01	NUT FLANGE	2		
3	503 23 04-01	WASHER	2		
4	725 54 59-05	SCREW	1		
5	503 20 00-45	SCREW COLLAR	1		
6	506 27 75-01	PULLEY	1		
7	503 20 03-80	SCREW	1		
8	721 12 52-70	PIN	1		
9	506 38 90-05	CHASSIS CPL.	1	Incl. 10 - 16, 19	New Part
10	506 25 73-01	COMPRESSION SPRING	1		
11	506 32 80-01	LOCKING BUTTON	1		
12	721 44 06-00	PIN	1		
13	735 31 08-00	CIRCLIP	1		
14	503 23 01-12	WASHER STEEL	1		
15	503 26 30-22	O-RING	1		
16	506 35 15-02	DRIVE SHAFT	1	Incl. 17 - 18	
17	503 25 21-01	BALL BEARING	2		
18	506 37 50-02	SPACER	1		
19	544 07 76-01	SLEEVE	2	Incl. 20 - 21	
20	506 34 39-01	WIPER	2		
21	740 48 25-02	O-RING	2		
22	506 35 19-02	WEAR PROTECTION	1	Incl. 23	
23	725 53 29-55	SCREW	1		
24	506 35 23-03	DRIVE WHEEL ASSY	1	Incl. 25 - 30	
25	506 37 49-01	SLEEVE	1		
26	506 37 46-02	FLANGE WASHER	1		
27	506 17 83-03	GEAR WHEEL	1		New Part
28	506 31 22-02	DRIVER	1	Incl. 31	New Part
29	506 13 96-01	COLLAR SCREW	1		
30	506 13 95-11	WASHER	1		
31	721 42 52-50	SPRING PIN	2		
32	740 42 24-00	O-RING	1		
33	506 37 48-01	SEALING HOLDER	1		
34	725 53 27-55	SCREW	3		
35	506 37 47-01	SEALING COLLAR	1		
36	503 26 21-01	SEALING RING	1		

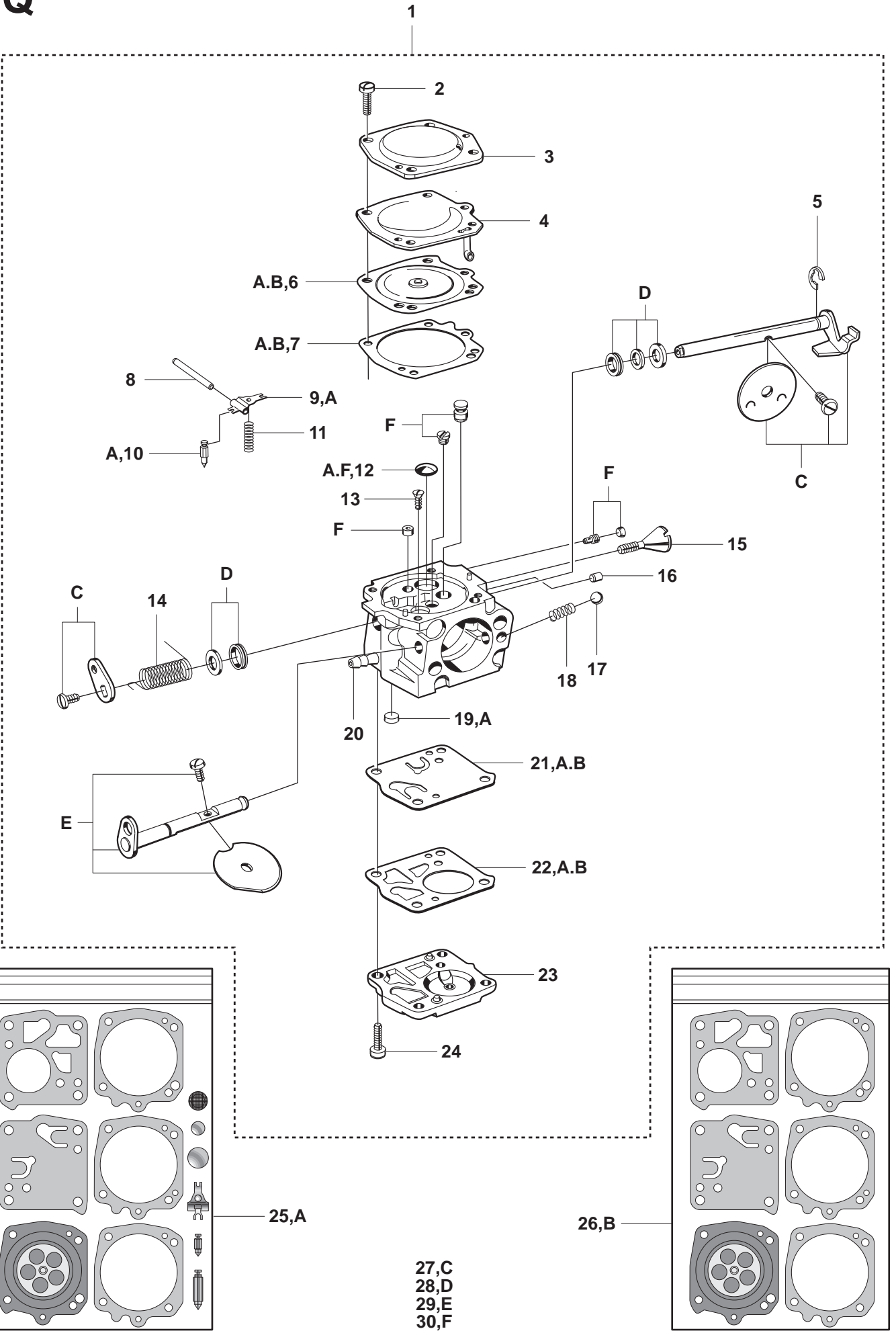
P K950 RING



Page P
K950 Ring

Pos.	Part No.	Description	Quantity	Notes	New Part
1	506 38 23-01	ENGAGEMENT ROLLER CPL	2	Incl. 2, 3, 5 - 18	
2	506 35 20-02	ROLLER	1	Incl. 3, 4	
3	503 20 13-18	COLLAR SCREW	1		
4	506 30 34-01	DRIVER	1		
5	506 31 69-01	DUST COVER	1		
6	506 37 93-02	SPACING SLEEVE	1		
7	503 26 20-01	SEALING RING	1		
8	735 31 28-10	CIRCLIP	1		
9	503 25 24-01	BALL BEARING	2		
10	506 30 33-01	SPACING SLEEVE	1		
11	506 31 68-01	SPACING SLEEVE	1		
12	506 30 29-01	SHAFT	1		
13	506 38 11-01	CAP	1		
14	740 48 20-12	O-RING	1		
15	506 38 09-01	BEARING CAGE	1		
16	506 34 76-01	COMPRESSION SPRING	1		
17	506 30 35-01	BUMPER	1		
18	506 38 97-01	PIN	1		
19	544 07 76-01	SLEEVE	2	Incl. 20, 21	
20	506 34 39-01	WIPER	2		
21	740 48 25-02	O-RING	2		
22	506 38 22-02	KNOB	1	Incl. 23	
23	506 33 65-01	SEALING RING	1		
24	506 38 21-02	KNOB	1		New Part

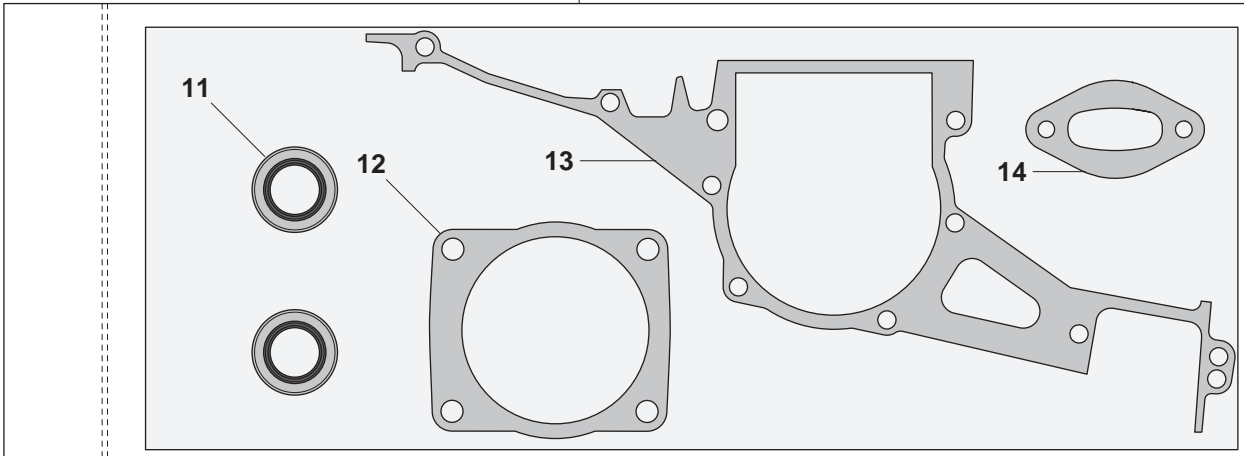
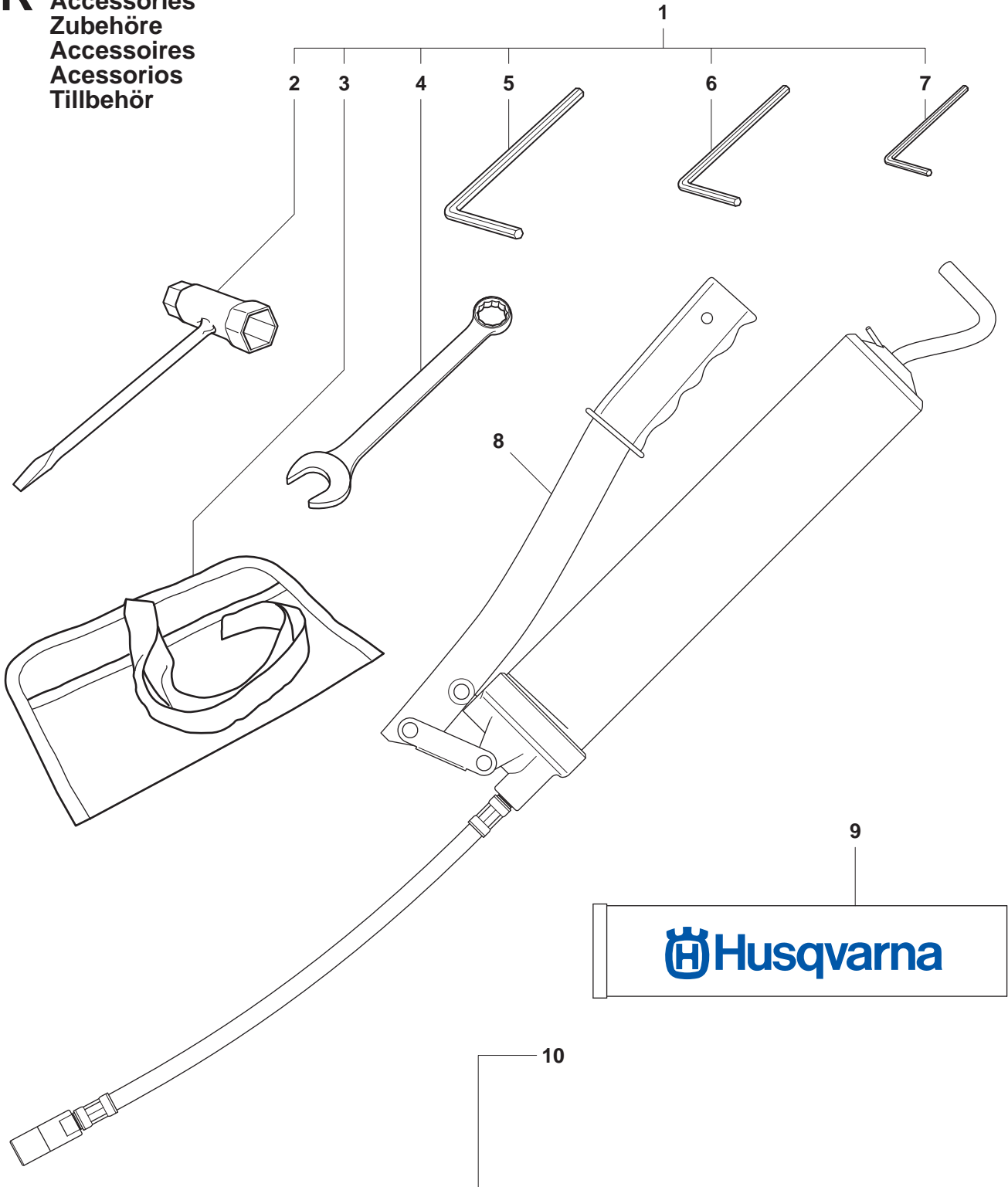
Q K950 RING



Page Q
K950 Ring

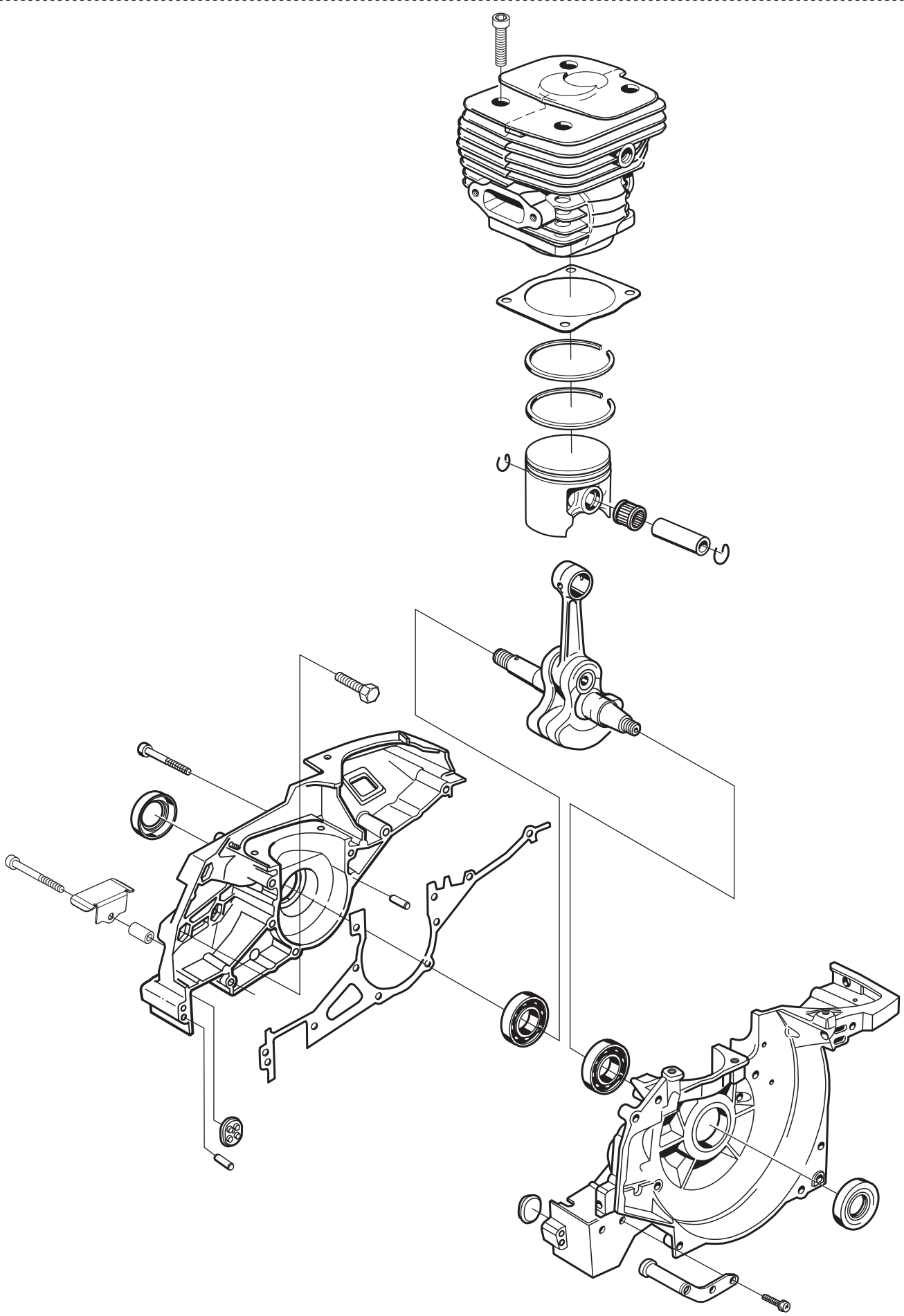
Pos.	Part No.	Description	Quantity	Notes	New Part
1	503 28 04-02	CARBURETTOR	1	Incl. 2 - 24	
2	506 27 14-01	MET.RETENTION SCREW	4		
3	503 53 36-01	DIAPHRAGM COVER	1		
4	506 25 64-02	INSERT	1		
5	501 82 18-01	THROTTLE SH."E"RING	1		
6	506 25 85-01	DIAPHRAGM	1	A, B	
7	506 25 84-01	DIAPHRAGM	1	A, B	
8	501 22 21-01	PIN RETAINING SCREW	1		
9	501 22 20-01	LEVER	1	A	
10	505 31 65-50	INLET NEEDLE	1		
11	501 22 25-01	SPRING	1	A	
12	501 22 03-01	WELCH PLUG(LARGE)	1	A, F	
13	501 48 52-01	PIN RETAINING SCREW	1		
14	506 28 63-01	SPRING THROTT.RETURN	1		
15	503 57 87-01	IDLE SPEED SCREW	1		
16	503 57 86-01	SPEED SCREW RET BALL	1		
17	501 22 04-01	CHOKE FRICTION BALL	1		
18	501 22 05-01	SPRING	1		
19	503 98 82-01	SCREEN	1		
20	503 53 39-01	TUBE CONNECTOR	1	A	
21	501 22 12-01	FUEL PUMP DIAPHRAM	1	A, B	
22	501 22 13-01	FUEL PUMP GASKET	1	A, B	
23	506 28 68-01	FUEL PUMP COVER	1		
24	501 22 15-01	SCREW	4		
25	506 27 63-01	REPAIR PARTS KIT	1	Incl. 6, 7, 9, 11, 12, 20 - 22	
26	506 25 88-01	DIAPHRAGM	1	Incl. 6, 7, 21, 22	
27	506 29 09-01	THROTTLE SHAFT(KIT)	1	Kit C	
28	506 29 10-01	SEALING, KIT	1	Kit D	
29	506 29 11-01	CHOKE SHAFT (KIT)	1	Kit E	
30	506 29 13-01	JET (KIT)	1	Kit F	

R K950 RING
Accessories
Zubehöre
Accessoires
Accesorios
Tillbehör



Page R
K950 Ring

Pos.	Part No.	Description	Quantity	Notes	New Part
1	506 36 38-02	TOOL SET	1	Incl. 2 - 7	
2	501 69 17-02	COMBINATION TOOL	1	13-19mm	
3	501 19 22-01	TOOL CASING	1		
4	506 35 52-01	TOOL	1	19mm	
5	506 36 36-01	L SPANNER	1	Allenkey 6mm	
6	506 38 37-02	S SPANNER	1	Allenkey 5mm	
7	502 21 58-01	L SPANNER	1	Allenkey 4mm	
8	506 38 49-02	LUBRICATION GUN	1		
9	544 08 04-02	GREASE TUBE	1		
10	506 29 05-04	GASKET KIT	1		
11	503 26 02-05	SEALING RING	2		
12	506 15 82-01	CYLINDER BASE GASKET	1		
13	506 23 24-01	GASKET	1		
14	506 37 81-01	GASKET MUFFLER	1		



Page S
K950 Ring

Pos.	Part No.	Description	Quantity	Notes	New Part
1	544 88 62-02	SHORT BLOCK	1		