



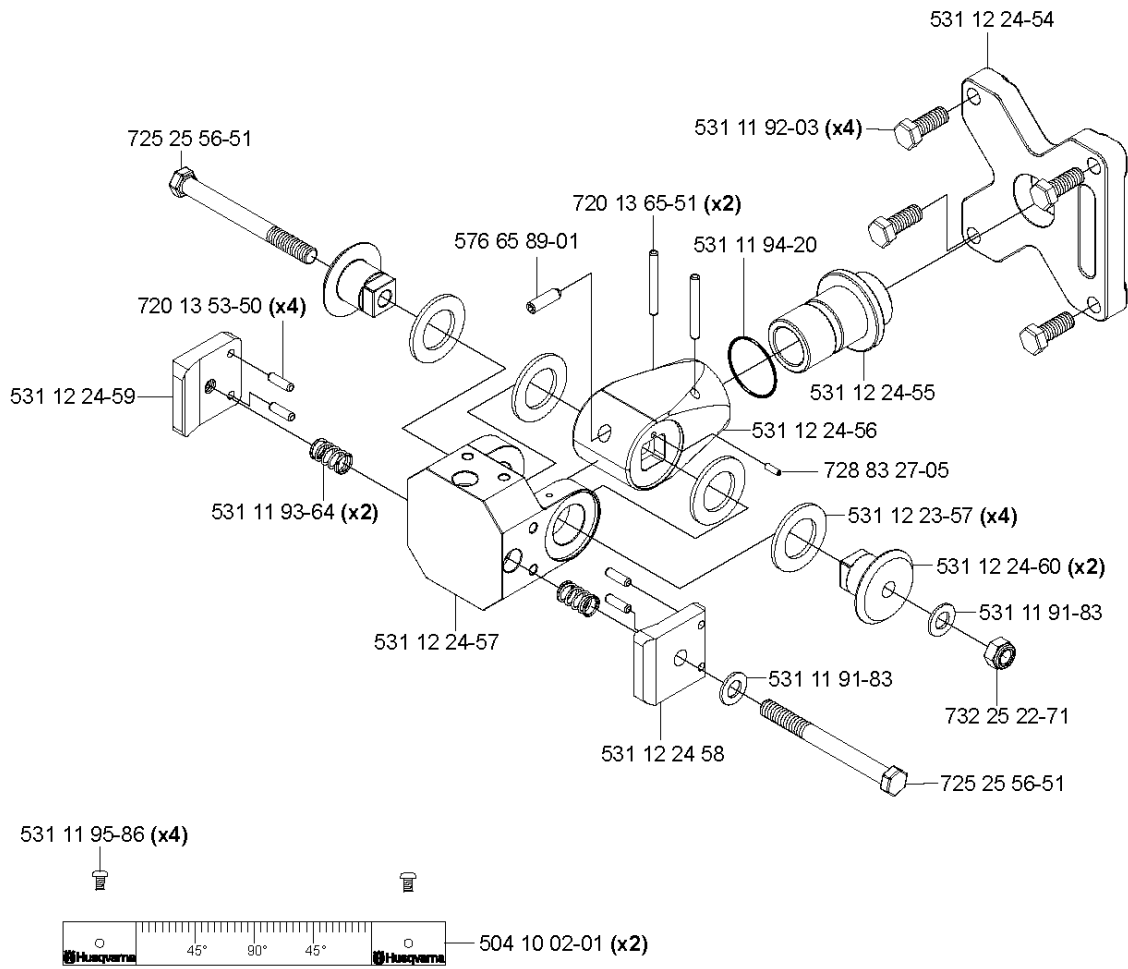
SPARE PARTS LIST

WALL SAWS

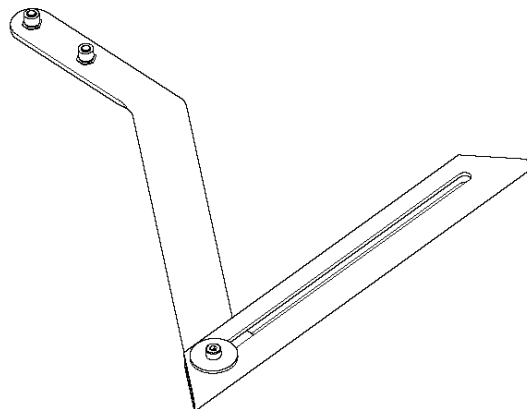
WS482 HF, Valid from machine no. 1275,
2012-07

J WS 482 HF
 Tillbehör
 Accessories
 Zubehöre
 Accessoires
 Accesorios

**Mounting bracket Universal
 compl. 531 11 32-00**



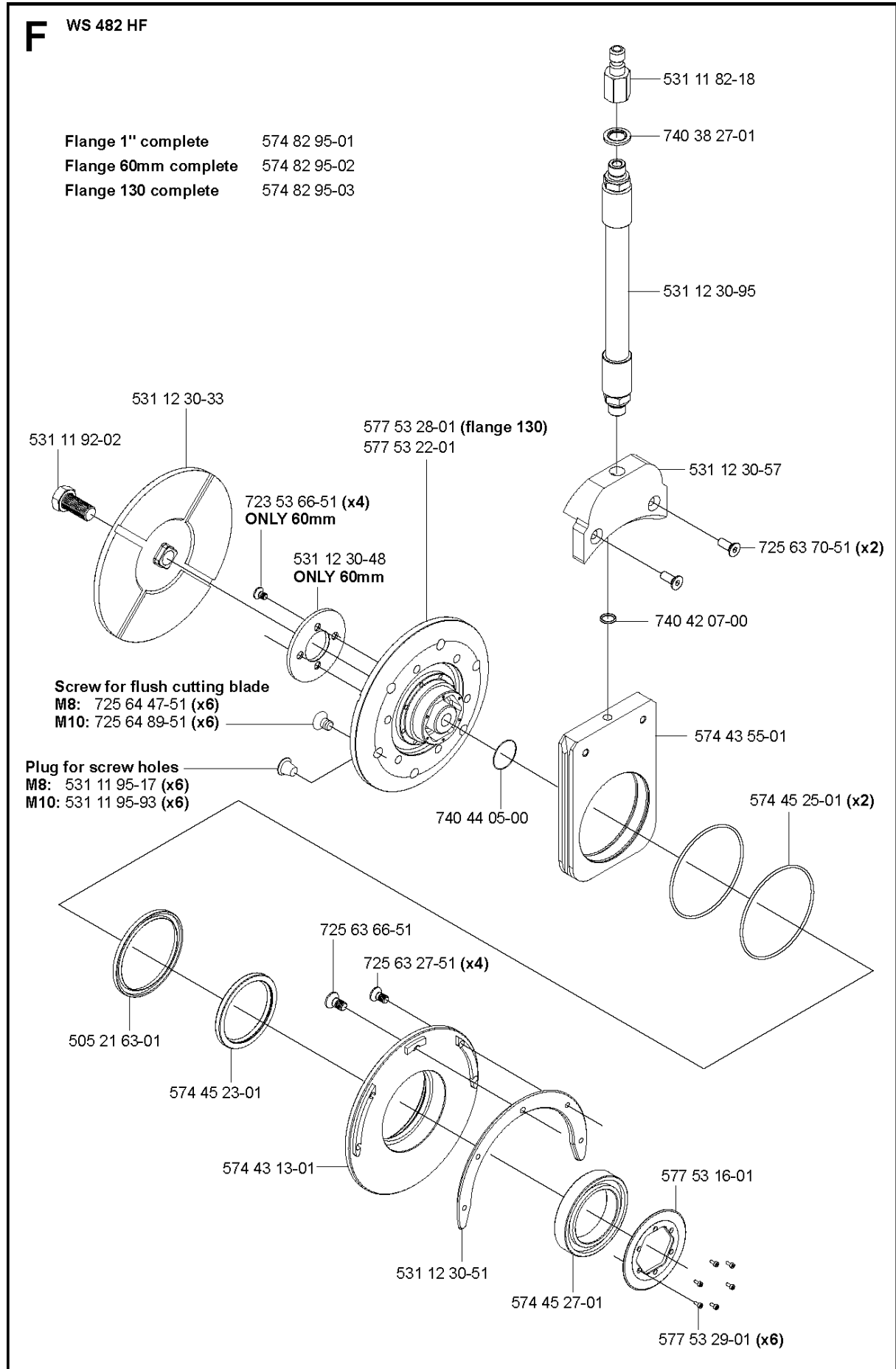
Measure rod complete 531 11 32-65



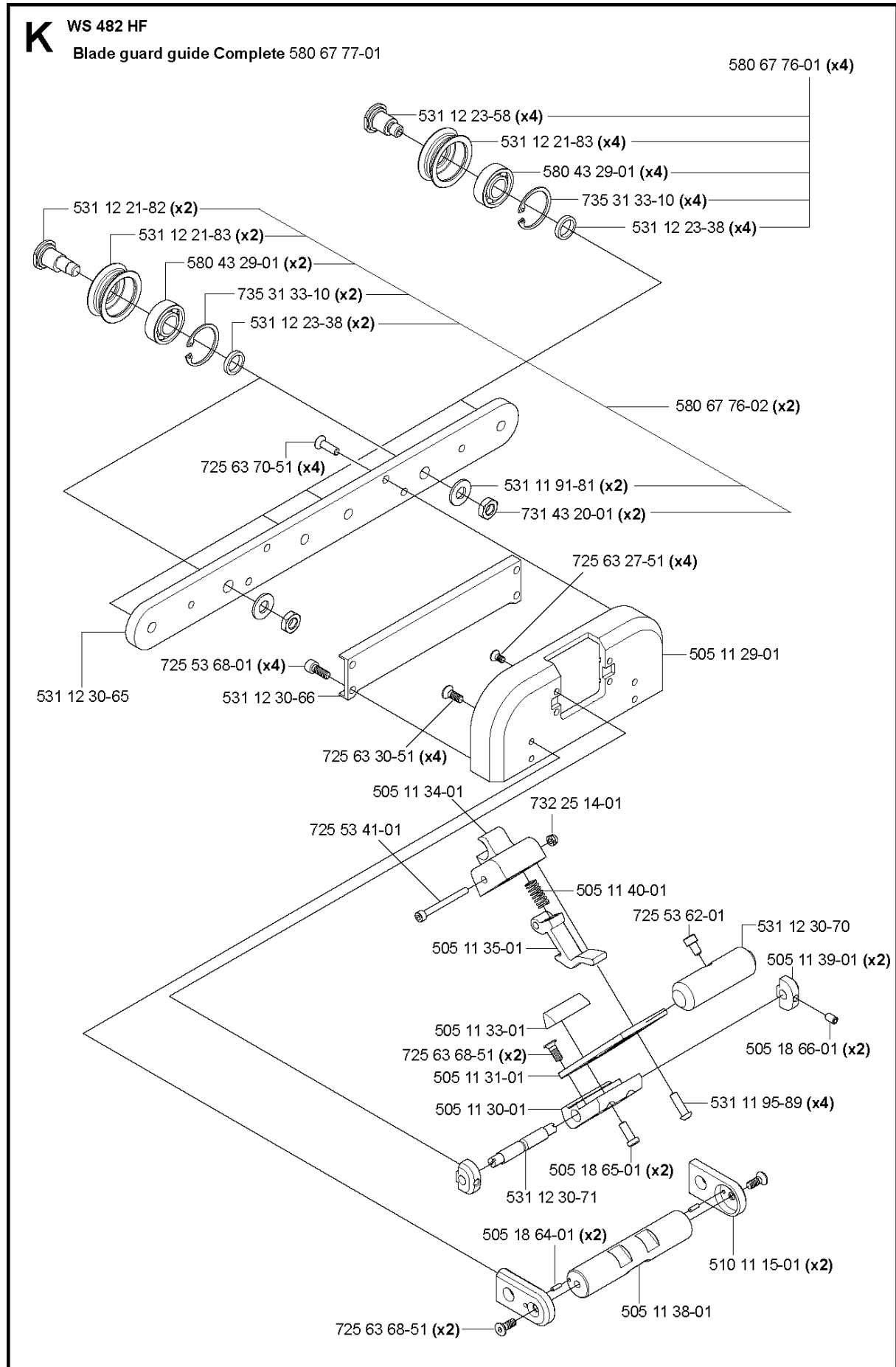
ACCESSORIES

WS482 HF, Valid from machine no. 1275, 2012-07

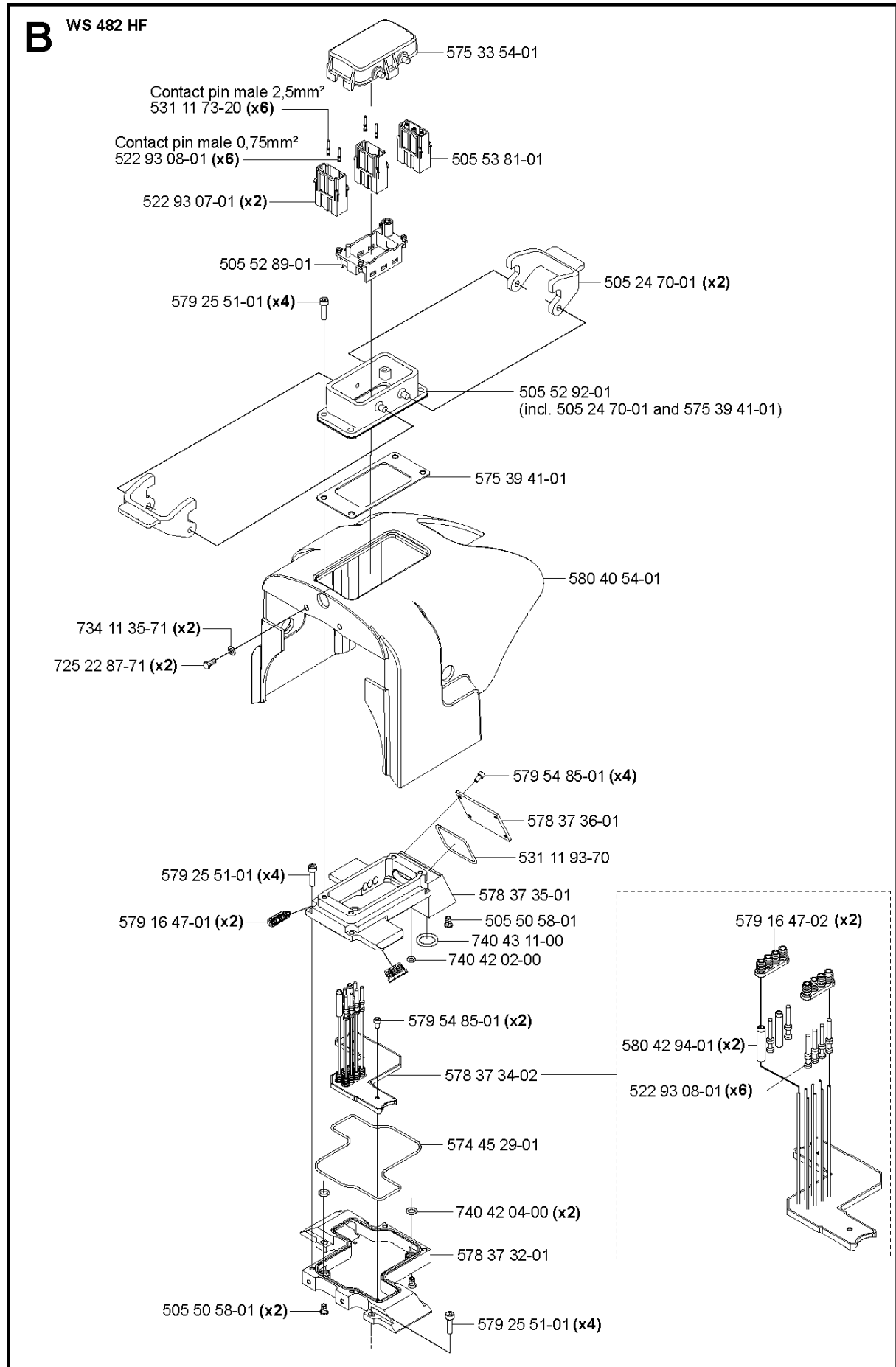
Part No	Description	Remark	QTY KIT
504 10 02-01	SCALE		
531 11 32-00	BRACKET		
531 11 32-65	POINTER		
531 11 91-83	WASHER		
531 11 92-03	SCREW		
531 11 93-64	SPRING		
531 11 94-20	O-RING		
531 11 95-86	SCREW		
531 12 23-57	CLUTCH		
531 12 24-54	CONSOLE		
531 12 24-55	AXLE		
531 12 24-56	MOUNT		
531 12 24-57	BRACKET		
531 12 24-58	WASHER		
531 12 24-59	NUT		
531 12 24-60	CLUTCH		
576 65 89-01	SCREW		
720 13 53-50	PARALLEL PIN		
720 13 65-51	PARALLEL PIN		
725 25 56-51	SCREW EHHM		
728 83 27-05	SCREW IHSETM		
732 25 22-71	HEXAGON LOCKING NUT		



Ref	Part No	Description	Remark	QTY KIT
505 21 63-01	505 21 63-01	RADIAL SEAL		
531 11 82-18	531 11 82-18	QUICK COUPLING		
531 11 92-02	531 11 92-02	SCREW		
531 11 95-17	531 11 95-17	PLUG		
531 11 95-93	531 11 95-93	PLUG		
531 12 30-33	531 12 30-33	FLANGE		
531 12 30-48	531 12 30-48	SPACER		
531 12 30-51	531 12 30-51	PLATE		
531 12 30-57	531 12 30-57	WASSERANSCHLUSS		
531 12 30-95	531 12 30-95	HOSE		
574 43 13-01	574 43 13-01	HUB		
574 43 55-01	574 43 55-01	BLOCK		
574 45 23-01	574 45 23-01	SEAL		
574 45 25-01	574 45 25-01	O-RING		
574 45 27-01	574 45 27-01	BEARING		
574 82 95-01	574 82 95-01	FLANGE		
574 82 95-02	574 82 95-02	FLANGE		
574 82 95-03	574 82 95-03	FLANGE		
577 53 16-01	577 53 16-02	STOP WASHER		
577 53 22-01	577 53 22-01	FLANGE		
577 53 28-01	577 53 28-01	FLANGE		
577 53 29-01	577 53 29-01	SCREW		
723 53 66-51	723 53 66-51	SCREW		
725 63 27-51	725 63 27-51	SCREW IHCSFM		
725 63 70-51	725 63 70-51	SCREW IHCSFM		
725 64 47-51	725 64 47-51	SCREW IHCSFM		
725 64 89-51	725 64 89-51	SCREW IHCSFM		
740 44 05-00	740 44 05-00	O-RING		
740 42 07-00	740 42 07-00	O-RING		
740 38 27-01	740 38 27-01	SEALING WASHER		
725 63 66-51	725 63 66-51	SCREW IHCSFM		1



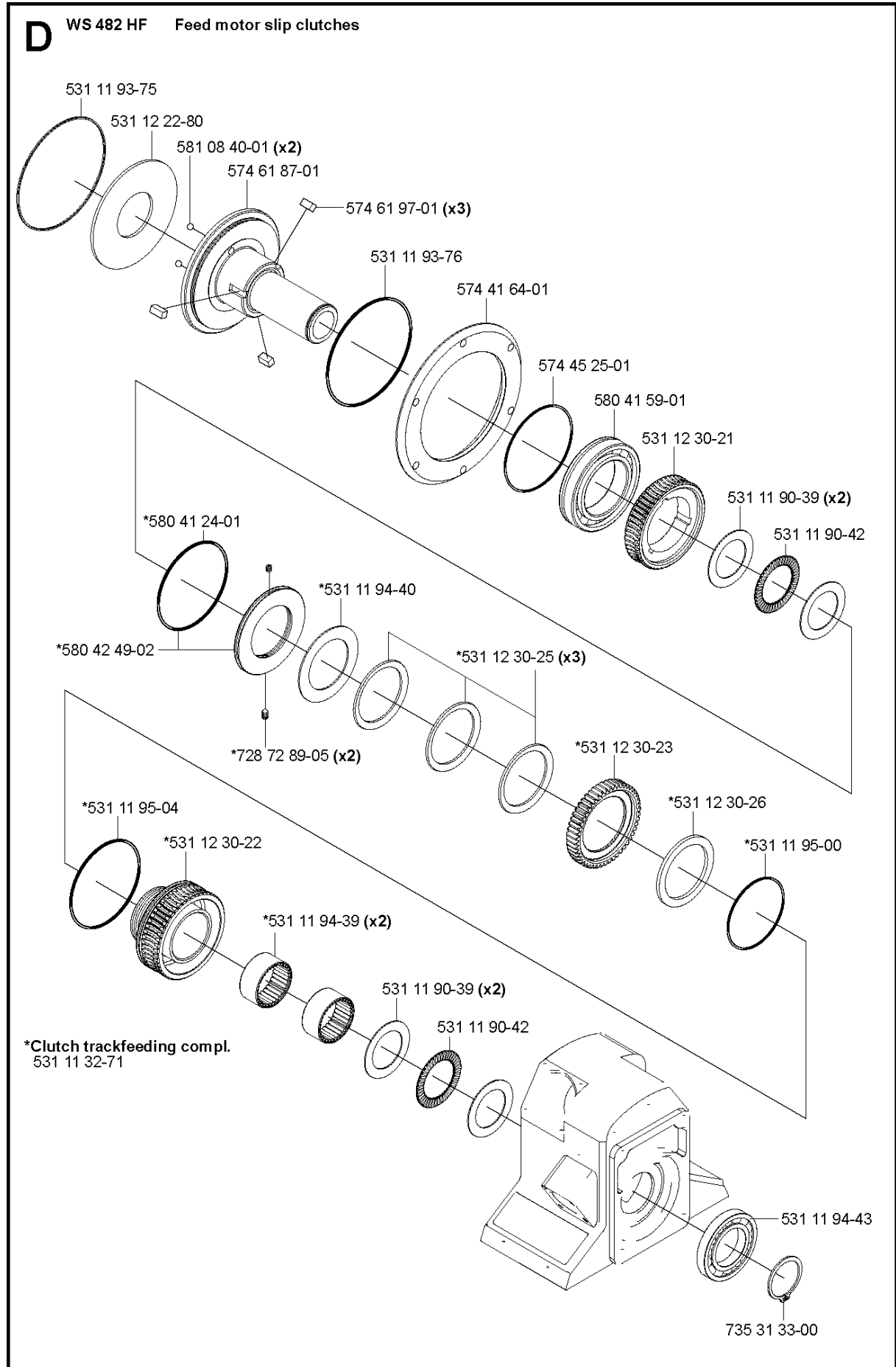
Part No	Description	Remark	QTY KIT
505 11 29-01	HOLDER		
505 11 30-01	ECCENTRIC		
505 11 31-01	HANDLE BRACKET		
505 11 33-01	BEAM		
505 11 34-01	SNAP LOCKING		
505 11 35-01	HOOK		
505 11 38-01	HANDLE		
505 11 39-01	SHAFT SEAT		
505 11 40-01	SPRING		
505 18 64-01	PARALLEL PIN		
505 18 65-01	SCREW		
505 18 66-01	SCREW		
510 11 15-01	HANDLE HOLDER		
531 11 91-81	WASHER		
531 11 95-89	SCREW		
531 12 21-82	WHEEL		
531 12 21-83	WHEEL		
531 12 23-38	SPACER RING		
531 12 23-58	WHEEL		
531 12 30-65	GUIDE RAIL		
531 12 30-66	COVER		
531 12 30-70	HANDLE		
531 12 30-71	SHAFT		
580 43 29-01	BEARING		
580 67 76-01	WHEEL ASSY		
580 67 76-02	WHEEL ASSY		
580 67 77-01	BLADE GUARD		
725 53 41-01	SCREW IHSCM		
725 53 62-01	SCREW IHSCM		
725 53 68-01	SCREW IHSCM		
725 63 27-51	SCREW IHCSFM		
725 63 30-51	SCREW IHCSFM		
725 63 68-51	SCREW IHCSFM		
725 63 70-51	SCREW IHCSFM		
731 43 20-01	HEXAGON THIN NUT		
732 25 14-01	HEXAGON LOCKING NUT		
735 31 33-10	CIRCLIP		



ELECTRICAL

WS482 HF, Valid from machine no. 1275, 2012-07

Ref	Part No	Description	Remark	QTY KIT
505 24 70-01	505 24 70-01	SHACKLE		
505 50 58-01	505 50 58-01	PLUG		
505 52 89-01	505 52 89-01	FRAME		
505 52 92-01	505 52 92-01	CONTACT		
505 53 81-01	505 53 81-01	CONSOLE		
522 93 07-01	522 93 07-01	CONSOLE		
522 93 08-01	522 93 08-01	TERMINAL		
531 11 73-20	531 11 73-20	TERMINAL		
531 11 93-70	531 11 93-70	O-RING		
574 45 29-01	574 45 29-01	O-RING		
575 33 54-01	575 33 54-01	COVER		
575 39 41-01	575 39 41-01	GASKET		
578 37 32-01	578 37 32-01	ELECTRONIC BOX		
578 37 34-02	578 37 34-04	PRINTED CIRCUIT BOARD		
578 37 35-01	578 37 35-01	SEALING PLATE		
578 37 36-01	578 37 36-01	CABLE COVER		
579 16 47-01	579 16 47-01	SEALING PLUG		
579 16 47-02	579 16 47-02	SEALING PLUG		
579 25 51-01	579 25 51-01	SCREW IHSCFMO		
579 54 85-01	579 54 85-01	SCREW		
580 40 54-01	580 40 54-01	COVER		
580 42 94-01	580 42 94-01	CONNECTOR		
725 22 87-71	725 22 87-71	SCREW EHHM		
734 11 35-71	734 11 35-71	WASHER		
740 43 11-00	740 43 11-00	O-RING		
740 42 02-00	740 42 02-00	O-RING		
740 42 04-00	740 42 04-00	O-RING		



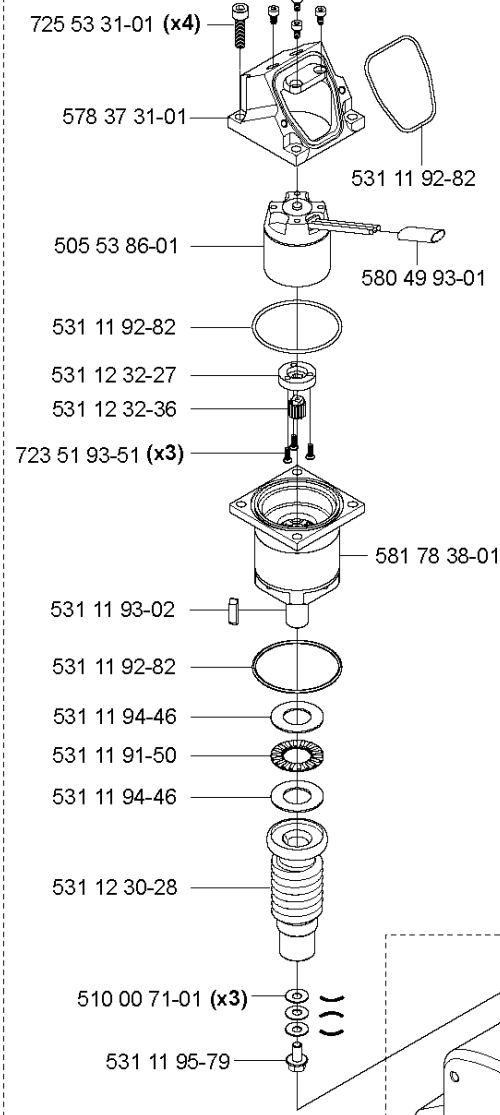
FEEDING GEARS

WS482 HF, Valid from machine no. 1275, 2012-07

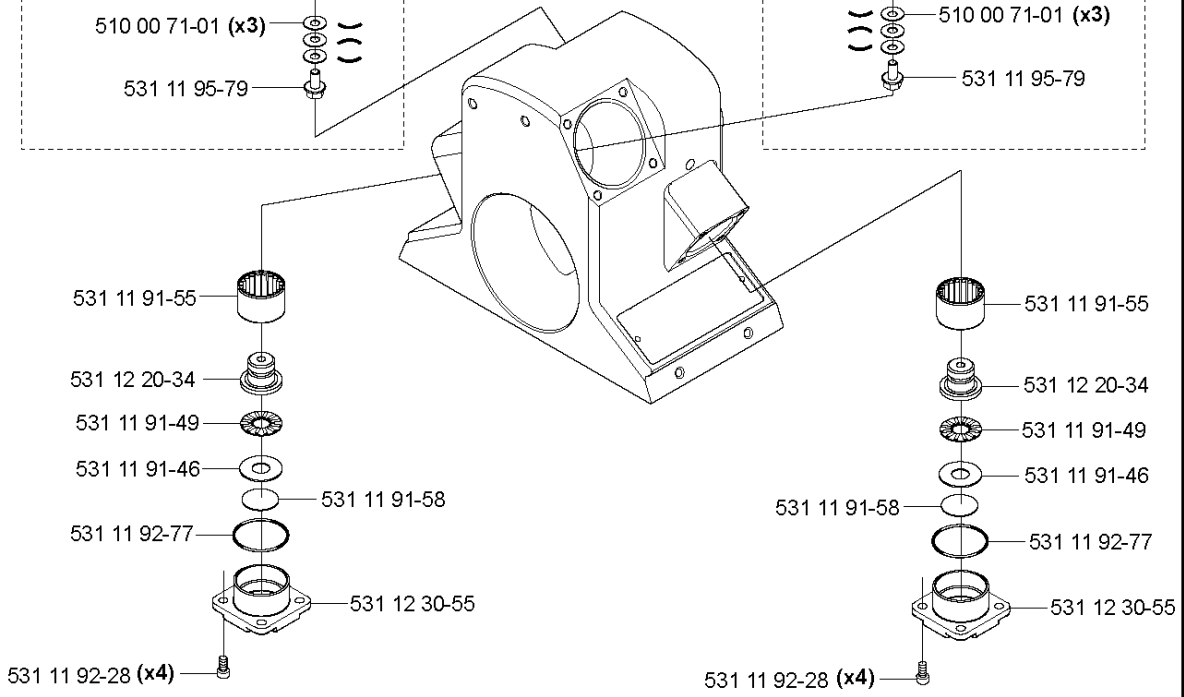
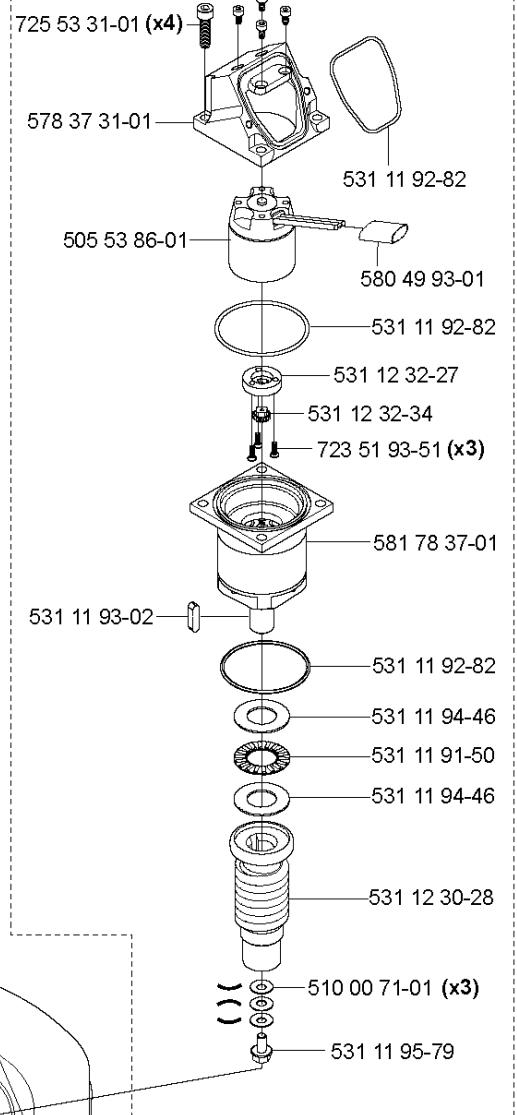
Part No	Description	Remark	QTY KIT
522 53 68-01	PLUG		
531 11 32-71	CLUTCH		
531 11 90-39	WASHER		
531 11 90-42	BEARING		
531 11 93-75	O-RING		
531 11 93-76	O-RING		
531 11 94-39	BEARING		
531 11 94-40	BEARING		
531 11 94-43	BEARING		
531 11 95-00	O-RING		
531 11 95-04	O-RING		
531 12 22-80	PLATE		
531 12 30-21	GEAR WHEEL		
531 12 30-22	GEAR WHEEL		
531 12 30-23	GEAR WHEEL		
531 12 30-25	CUP		
531 12 30-26	PLATE		
574 41 64-01	CLUTCH HUB		
574 45 25-01	O-RING		
574 61 87-01	SHAFT		
574 61 97-01	KEY		
580 41 24-01	O-RING		
580 41 59-01	BEARING		
580 42 49-02	NUT		
581 08 40-01	BALL		1
728 72 89-05	SCREW IHSETM		
735 31 33-00	CIRCLIP		

C WS 482 HF

Track feeding motor compl. 580 62 50-01



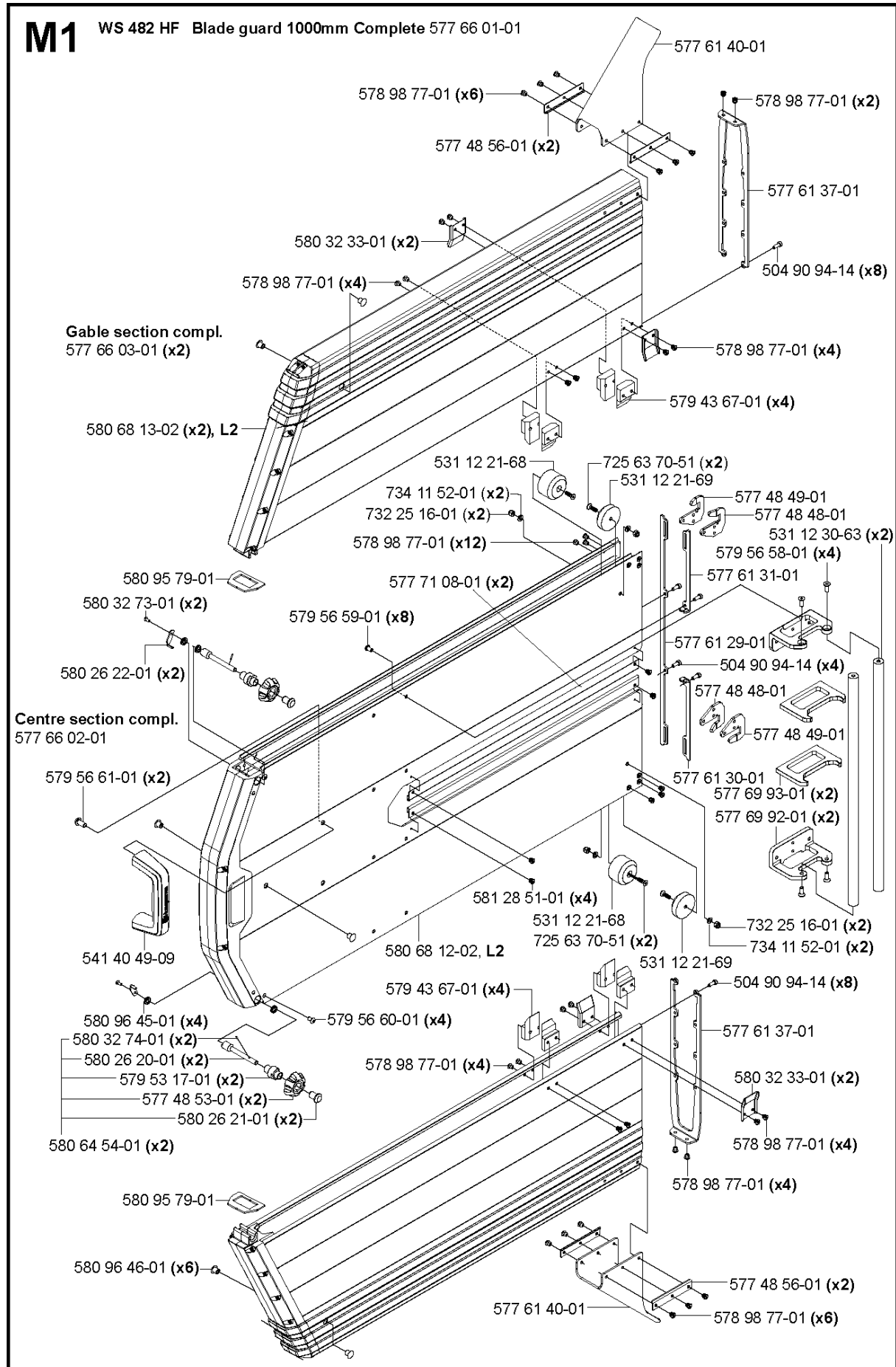
579 54 85-01 (x4) Arm feeding motor compl. 580 62 51-01



FEEDING MOTORS

WS482 HF, Valid from machine no. 1275, 2012-07

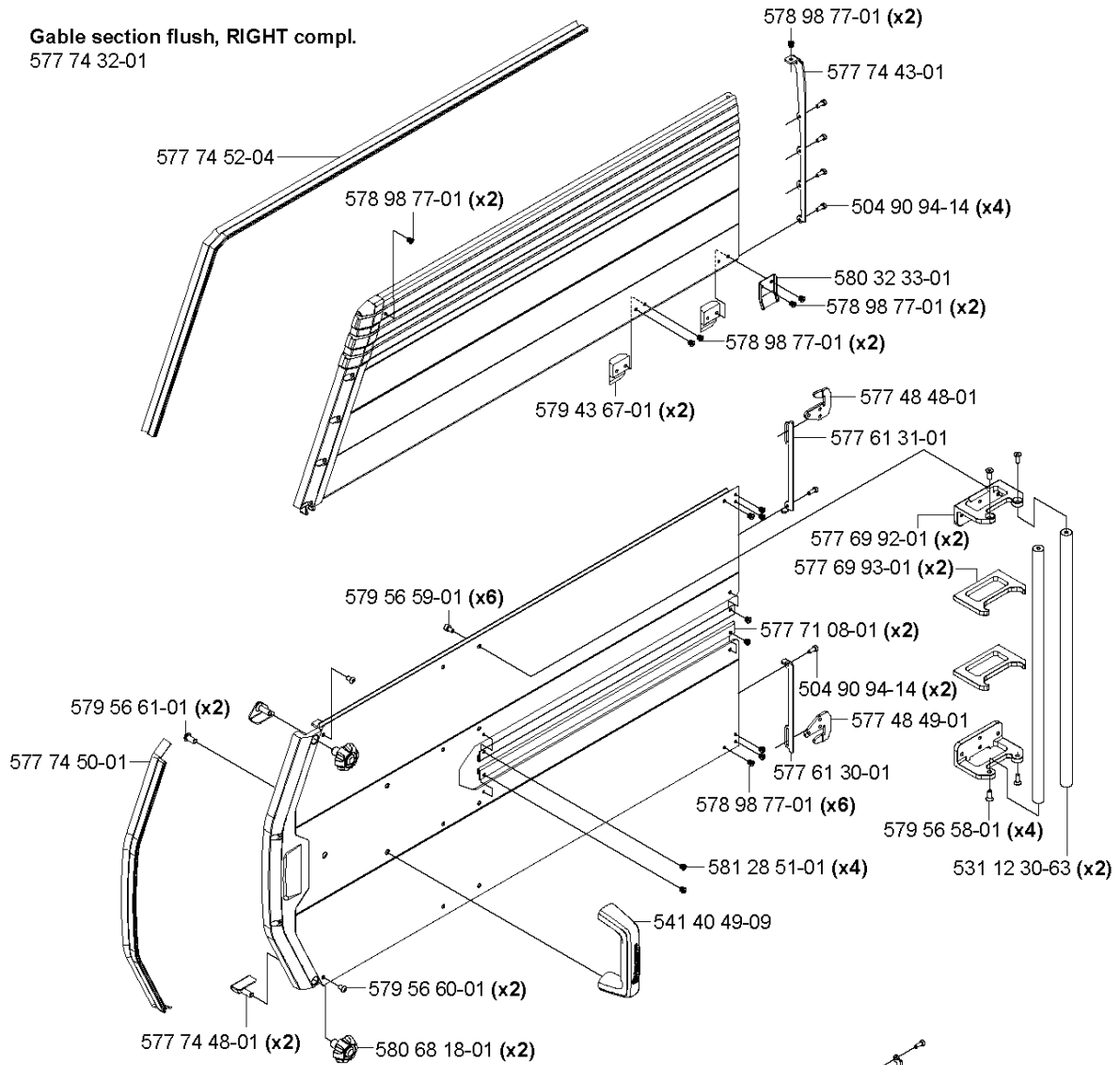
Part No	Description	Remark	QTY KIT
505 53 86-01	ELECTRIC BOX		
510 00 71-01	SPRING WASHER		
531 11 91-46	BEARING		
531 11 91-49	BEARING		
531 11 91-50	BEARING		
531 11 91-55	BEARING		
531 11 91-58	SHIM		
531 11 92-28	SCREW		
531 11 92-77	O-RING		
531 11 92-82	O-RING		
531 11 92-82	O-RING		1
531 11 93-02	KEY		
531 11 94-46	WASHER		
531 11 95-79	SCREW		
531 12 20-34	AXLE		
531 12 30-28	AUTOMATIC FEEDING SYSTEM		
531 12 30-55	BLOCK		
531 12 32-27	SHAFT		
531 12 32-34	GEAR WHEEL		
531 12 32-36	GEAR WHEEL		
578 37 31-01	MOTOR HOUSING		
579 54 85-01	SCREW		
580 49 93-01	HOSE KIT		
580 62 50-01	MOTOR ASSY		
580 62 51-01	MOTOR ASSY		
581 78 37-01	GEARBOX		
581 78 38-01	GEARBOX		
723 51 93-51	SCREW		
725 53 31-01	SCREW IHSCM		



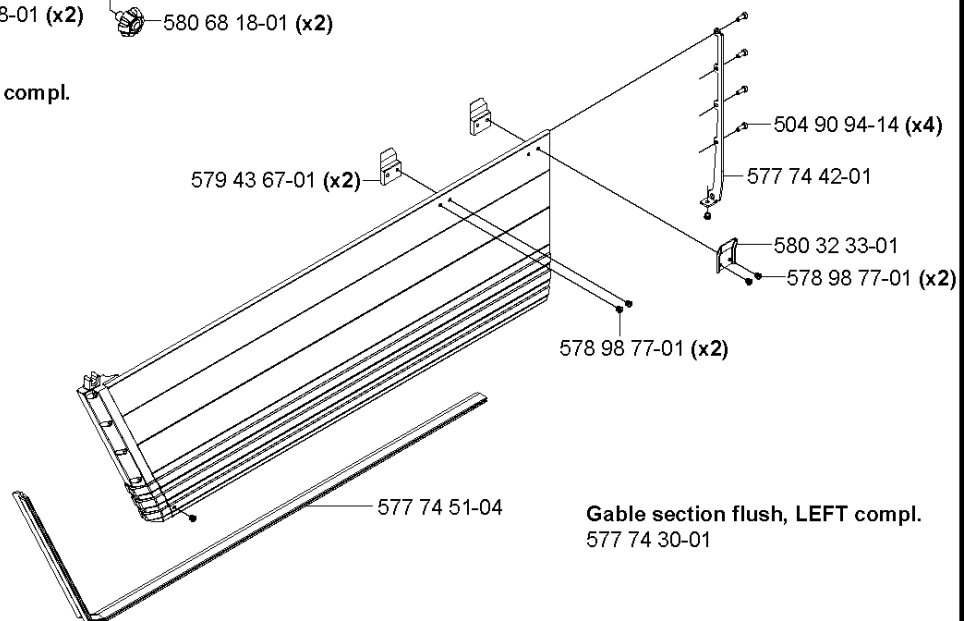
Part No	Description	Remark	QTY KIT
504 90 94-14	SCREW ITXSCT		
531 12 21-68	GUIDE		
531 12 21-69	GUIDE		
531 12 30-63	RAIL		
541 40 49-09	HANDLE		
577 48 48-01	HITCH		
577 48 49-01	HITCH		
577 48 53-01	KNOB		
577 48 56-01	WASHER		
577 61 29-01	LINK		
577 61 30-01	LINK		
577 61 31-01	LINK		
577 61 37-01	END COVER		
577 61 40-01	SPRAY GUARD		
577 66 01-01	BLADE GUARD		
577 66 02-01	BLADE GUARD		
577 66 03-01	GABLE		
577 69 92-01	FIXTURE		
577 69 93-01	FIXTURE		
577 71 08-01	GUIDE BAR		
578 98 77-01	RIVET		
579 43 67-01	GUIDE PLATE		
579 53 17-01	CONE		
579 56 58-01	SCREW		
579 56 59-01	SCREW		
579 56 60-01	SCREW		
579 56 61-01	SCREW		
580 26 20-01	SCREW		
580 26 21-01	NUT		
580 26 22-01	HOOK		
580 32 33-01	GUIDE		
580 32 73-01	SCREW		
580 32 74-01	PEN		
580 64 54-01	KNOB		
580 68 12-02	GUARD		
580 68 13-02	GUARD		
580 95 79-01	GASKET		1
580 96 45-01	V-RING		
580 96 46-01	RUBBER PLUG		
581 28 51-01	RIVET		
725 63 70-51	SCREW IHCSFM		
732 25 16-01	HEXAGON LOCKING NUT		
734 11 52-01	WASHER		

M2 WS 482 HF Flush blade guard 1000mm complete 577 74 24-01

Gable section flush, RIGHT compl.
577 74 32-01



Centre section flush compl.
577 90 30-01

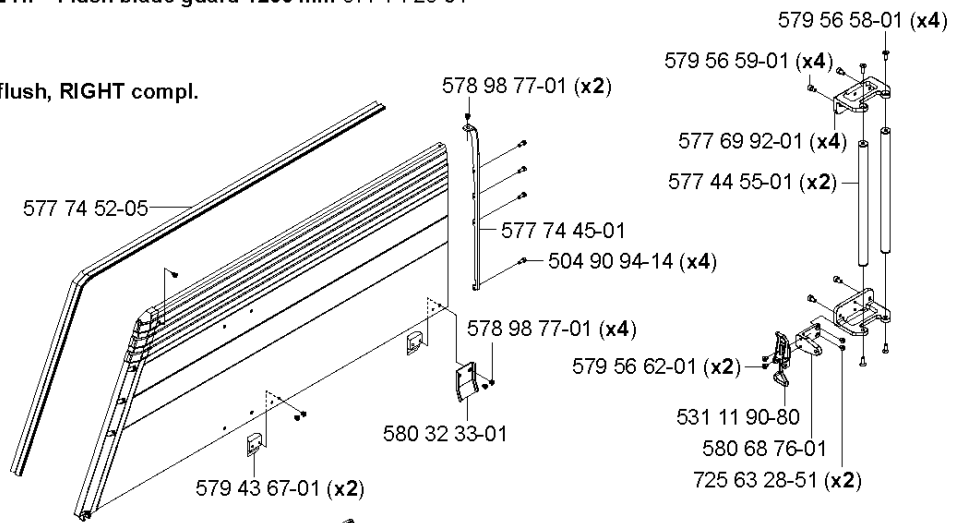


Gable section flush, LEFT compl.
577 74 30-01

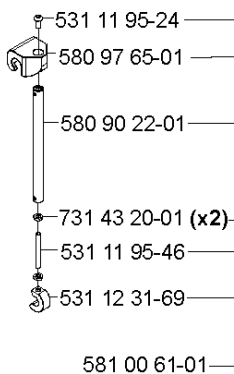
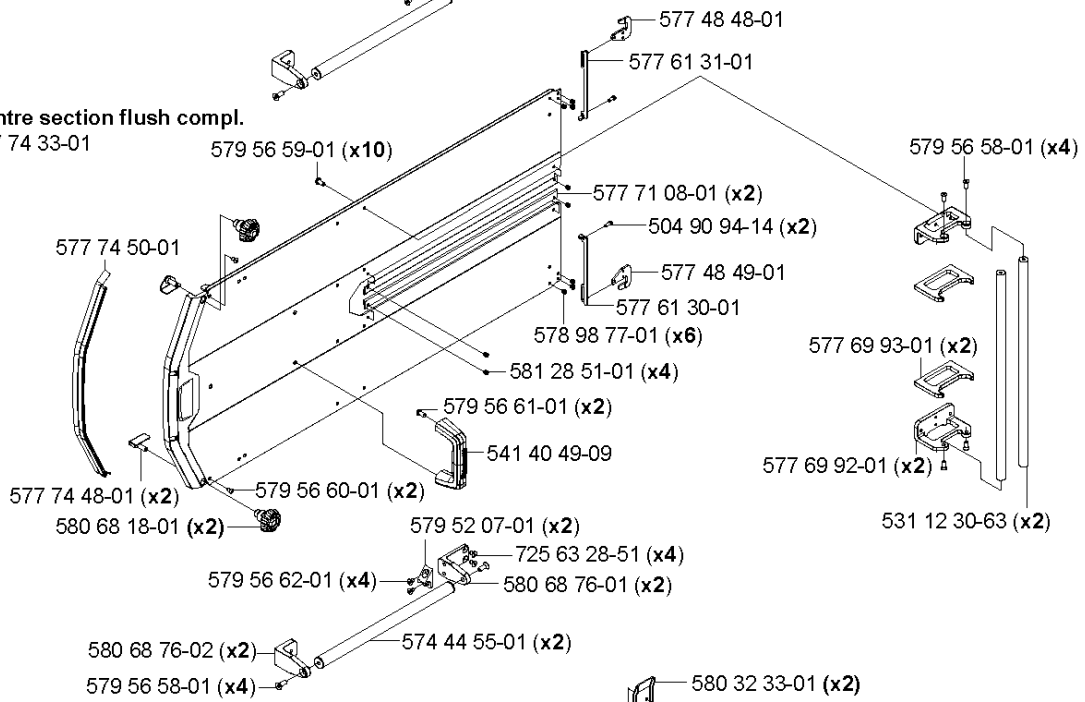
Part No	Description	Remark	QTY KIT
504 90 94-14	SCREW ITXSCT		
531 12 30-63	RAIL		
541 40 49-09	HANDLE		
577 48 48-01	HITCH		
577 48 49-01	HITCH		
577 61 30-01	LINK		
577 61 31-01	LINK		
577 69 92-01	FIXTURE		
577 69 93-01	FIXTURE		
577 71 08-01	GUIDE BAR		
577 74 24-01	BLADE GUARD		
577 74 30-01	GABLE		
577 74 32-01	GABLE		
577 74 42-01	COVER		
577 74 43-01	COVER		
577 74 48-01	FRAME		
577 74 50-01	STRIP		
577 74 51-04	COVER		
577 74 52-04	COVER		
577 90 30-01	BLADE GUARD		
578 98 77-01	RIVET		
579 43 67-01	GUIDE PLATE		
579 56 58-01	SCREW		
579 56 59-01	SCREW		
579 56 60-01	SCREW		
579 56 61-01	SCREW		
580 32 33-01	GUIDE		1
580 68 12-02	GUARD		
580 68 18-01	KNOB		
580 95 79-01	GASKET		
581 28 51-01	RIVET		

N3 WS 482 HF Flush blade guard 1200 mm 577 74 25-01

Gable section flush, RIGHT compl.
577 41 35-01



Centre section flush compl.
577 74 33-01

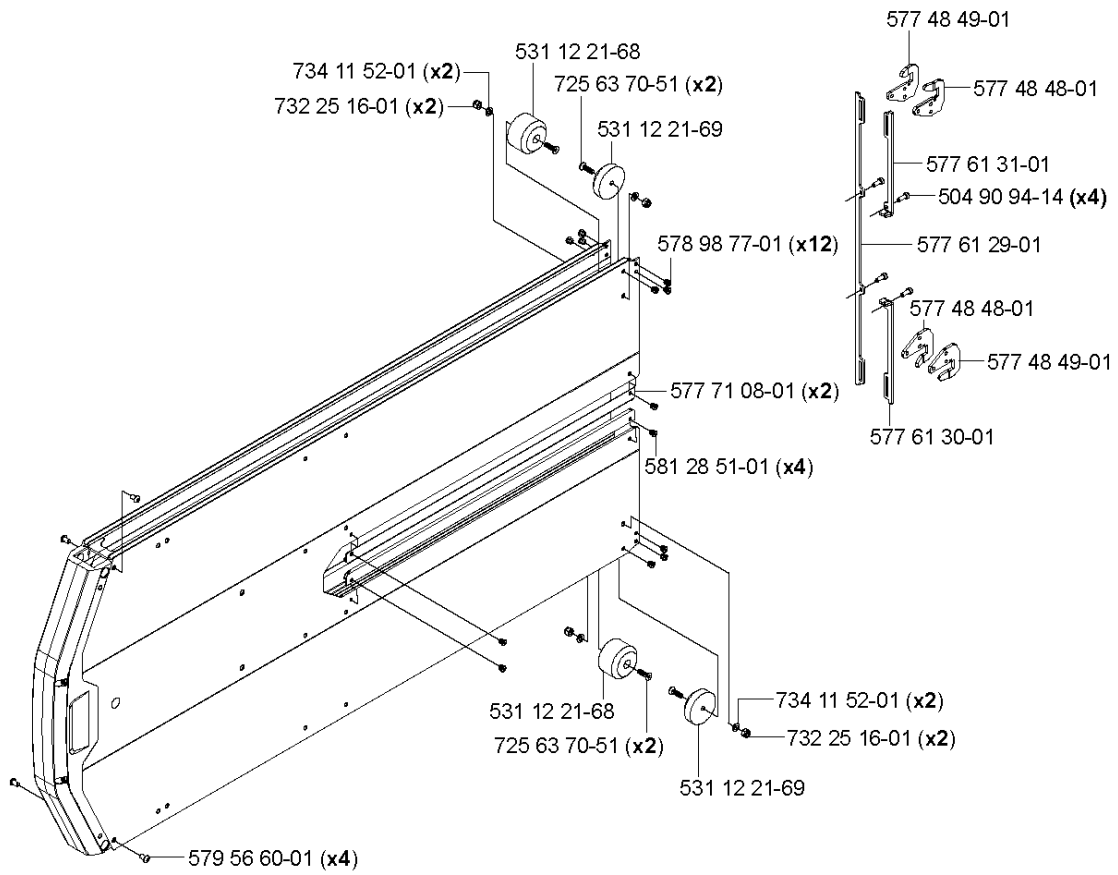


Gable section flush, LEFT compl.
577 74 34-01

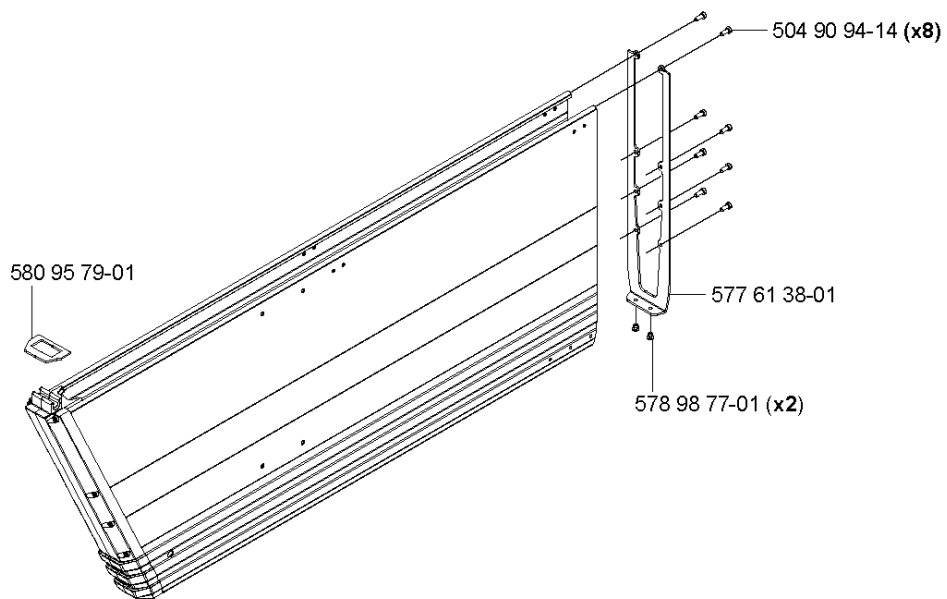
Part No	Description	Remark	QTY KIT
504 90 94-14	SCREW ITXSCT		
531 11 90-80	SNAP LOCKING		
531 11 95-24	SCREW		
531 11 95-46	PIN		
531 12 30-63	RAIL		
531 12 31-69	CLAMP		
541 40 49-09	HANDLE		
574445501	MUFFLER ASSY		1
577 41 35-01	CONTROL		
577 44 55-01	GUIDE RAIL		
577 48 48-01	HITCH		
577 48 49-01	HITCH		
577 61 30-01	LINK		
577 61 31-01	LINK		
577 69 92-01	FIXTURE		
577 69 93-01	FIXTURE		
577 71 08-01	GUIDE BAR		
577 74 25-01	BLADE GUARD		
577 74 33-01	BLADE GUARD		
577 74 34-01	GABLE		
577 74 44-01	COVER		
577 74 45-01	COVER		
577 74 48-01	FRAME		
577 74 50-01	STRIP		
577 74 51-05	COVER		
577 74 52-05	COVER		
578 98 77-01	RIVET		
579 43 67-01	GUIDE PLATE		
579 52 07-01	HOOK		
579 56 58-01	SCREW		
579 56 59-01	SCREW		
579 56 60-01	SCREW		
579 56 61-01	SCREW		
579 56 62-01	SCREW		
580 32 33-01	GUIDE		
580 68 18-01	KNOB		
580 68 76-01	ANGLE BRACKET		
580 68 76-02	ANGLE BRACKET		
580 90 22-01	ARBOR SHAFT		
580 97 65-01	HOOK		
581 00 61-01	STRUT		
581 28 51-01	RIVET		
725 63 28-51	SCREW IHCSFM		
731 43 20-01	HEXAGON THIN NUT		

N2

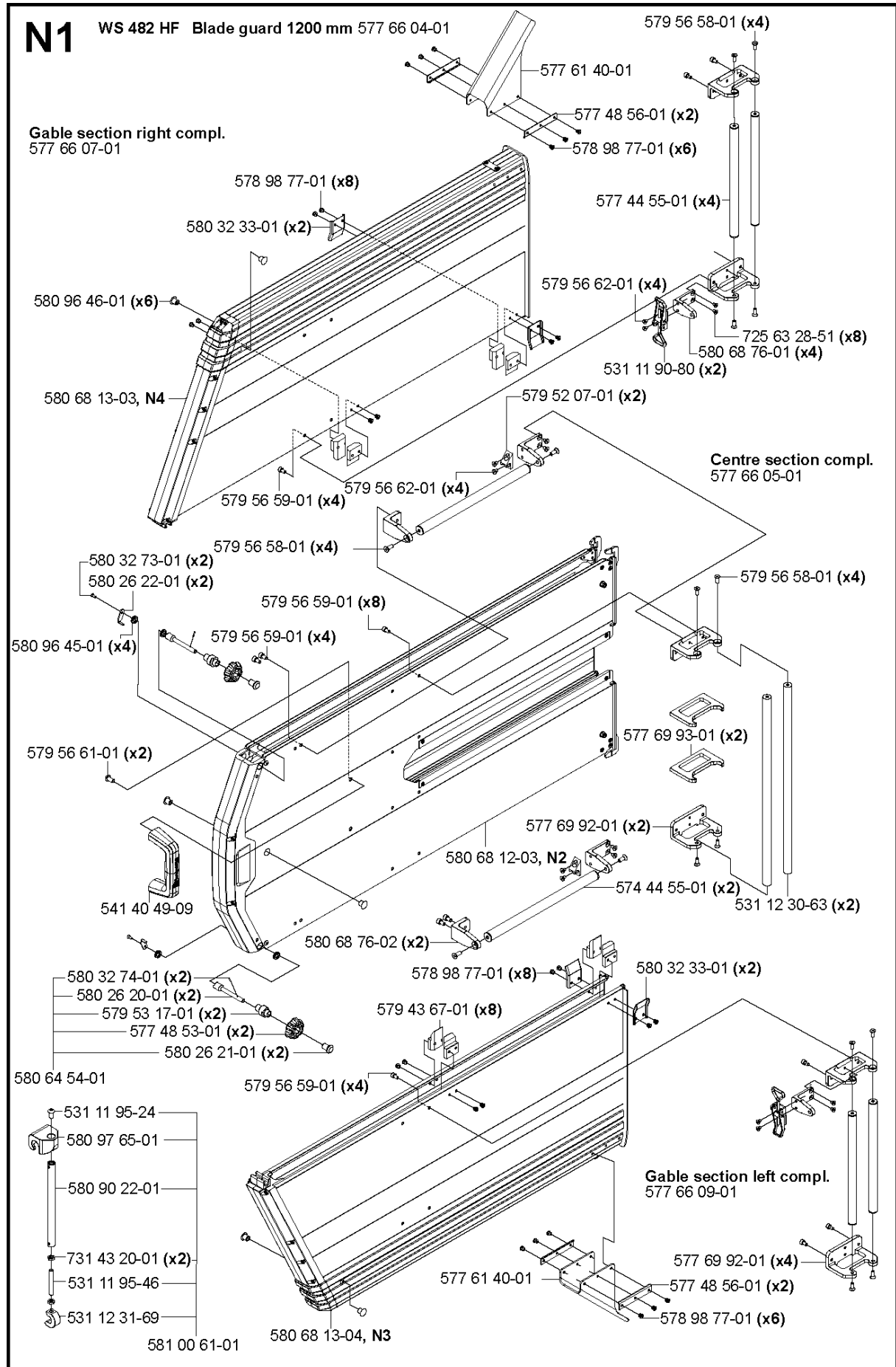
WS 482 HF Blade guard centre section 1200 mm



Blade guard gable section 1200 mm

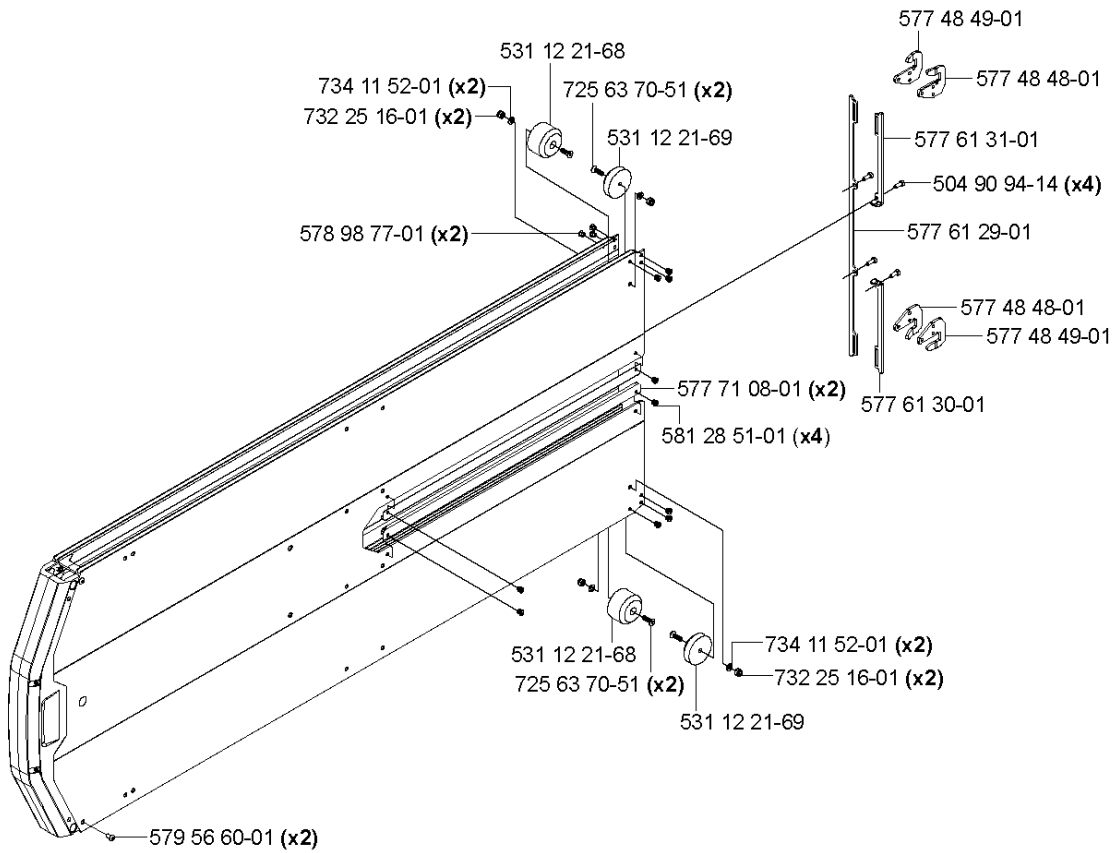


Part No	Description	Remark	QTY KIT
504 90 94-14	SCREW ITXSCT		
531 12 21-68	GUIDE		
531 12 21-69	GUIDE		
577 48 48-01	HITCH		
577 48 49-01	HITCH		
577 61 29-01	LINK		
577 61 30-01	LINK		
577 61 31-01	LINK		
577 61 38-01	COVER		
577 71 08-01	GUIDE BAR		
578 98 77-01	RIVET		1
579 56 60-01	SCREW		
580 95 79-01	GASKET		
581 28 51-01	RIVET		
725 63 70-51	SCREW IHCSFM		
732 25 16-01	HEXAGON LOCKING NUT		
734 11 52-01	WASHER		

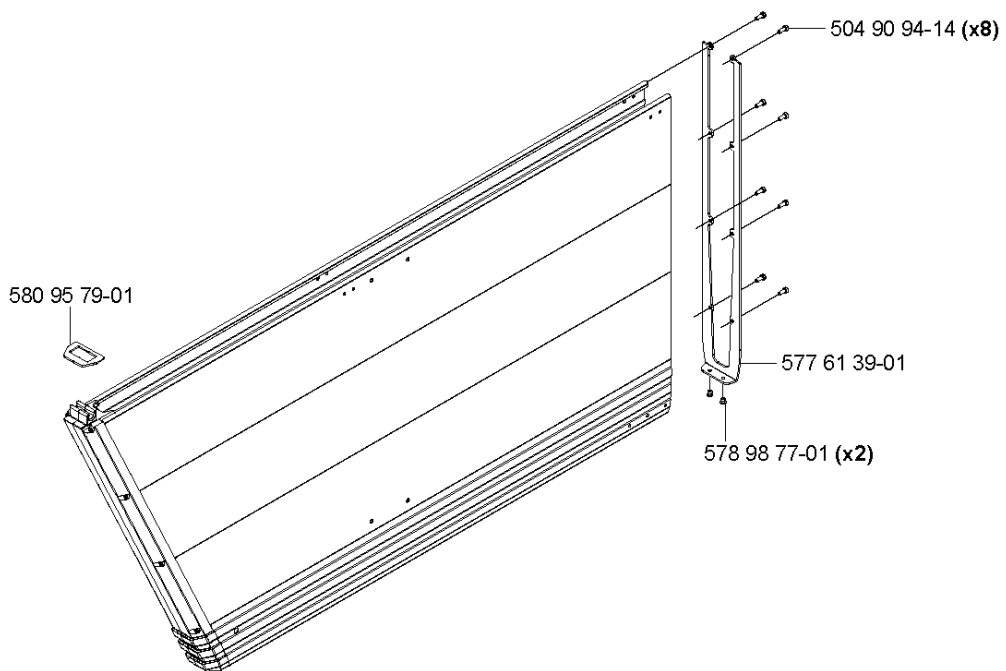


Part No	Description	Remark	QTY KIT
531 11 90-80	SNAP LOCKING		
531 11 95-24	SCREW		
531 11 95-46	PIN		
531 12 30-63	RAIL		
531 12 31-69	CLAMP		
541 40 49-09	HANDLE		
574445501	MUFFLER ASSY		1
577 44 55-01	GUIDE RAIL		
577 48 53-01	KNOB		
577 48 56-01	WASHER		
577 61 40-01	SPRAY GUARD		
577 66 04-01	BLADE GUARD		
577 66 04-01	BLADE GUARD		1
577 66 05-01	BLADE GUARD		
577 66 07-01	GABLE		
577 66 09-01	GABLE		
577 69 92-01	FIXTURE		
577 69 93-01	FIXTURE		
578 98 77-01	RIVET		
578 98 77-01	RIVET		1
579 43 67-01	GUIDE PLATE		
579 52 07-01	HOOK		
579 53 17-01	CONE		
579 56 58-01	SCREW		
579 56 59-01	SCREW		
579 56 61-01	SCREW		
579 56 62-01	SCREW		
580 26 20-01	SCREW		
580 26 21-01	NUT		
580 26 22-01	HOOK		
580 32 33-01	GUIDE		
580 32 73-01	SCREW		
580 32 74-01	PEN		
580 64 54-01	KNOB		
580 68 76-01	ANGLE BRACKET		
580 68 76-02	ANGLE BRACKET		
580 90 22-01	ARBOR SHAFT		
580 96 45-01	V-RING		
580 96 46-01	RUBBER PLUG		
580 97 65-01	HOOK		
581 00 61-01	STRUT		
725 63 28-51	SCREW IHCSFM		
731 43 20-01	HEXAGON THIN NUT		

O2 WS 482 HF Blade guard centre section 1600 mm



Blade guard gable section 1600 mm

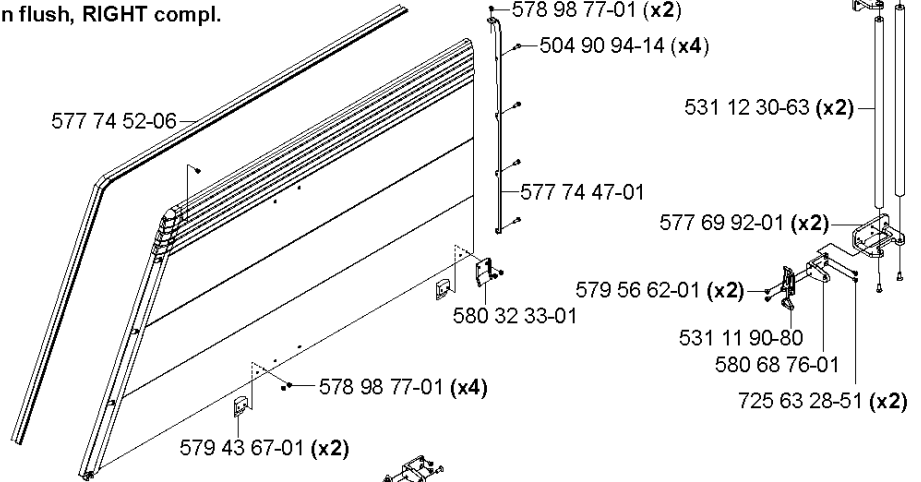


Part No	Description	Remark	QTY KIT
504 90 94-14	SCREW ITXSCT		
531 12 21-68	GUIDE		
531 12 21-69	GUIDE		
577 48 48-01	HITCH		
577 48 49-01	HITCH		
577 61 29-01	LINK		
577 61 30-01	LINK		
577 61 31-01	LINK		
577 61 39-01	COVER		
577 71 08-01	GUIDE BAR		
578 98 77-01	RIVET		1
579 56 60-01	SCREW		
580 95 79-01	GASKET		
581 28 51-01	RIVET		
725 63 70-51	SCREW IHCSFM		
732 25 16-01	HEXAGON LOCKING NUT		
734 11 52-01	WASHER		

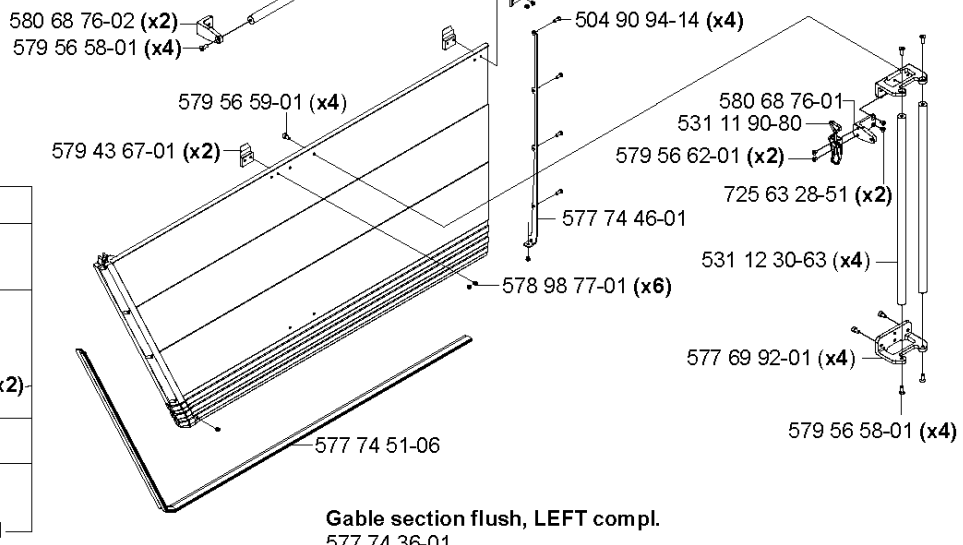
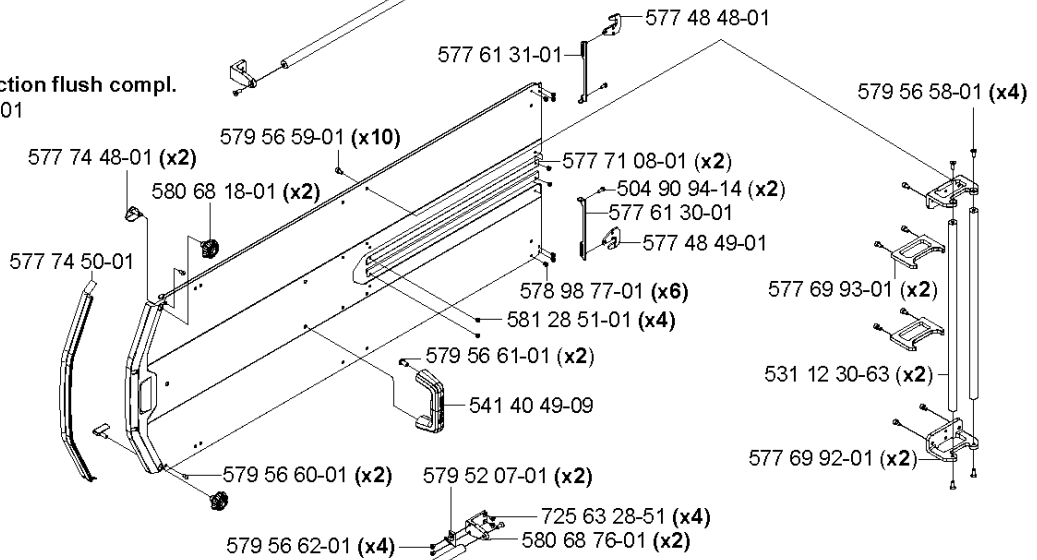
O3

WS 482 HF Flush blade guard 1600 mm 577 74 26-01

Gable section flush, RIGHT compl.
577 74 37-01



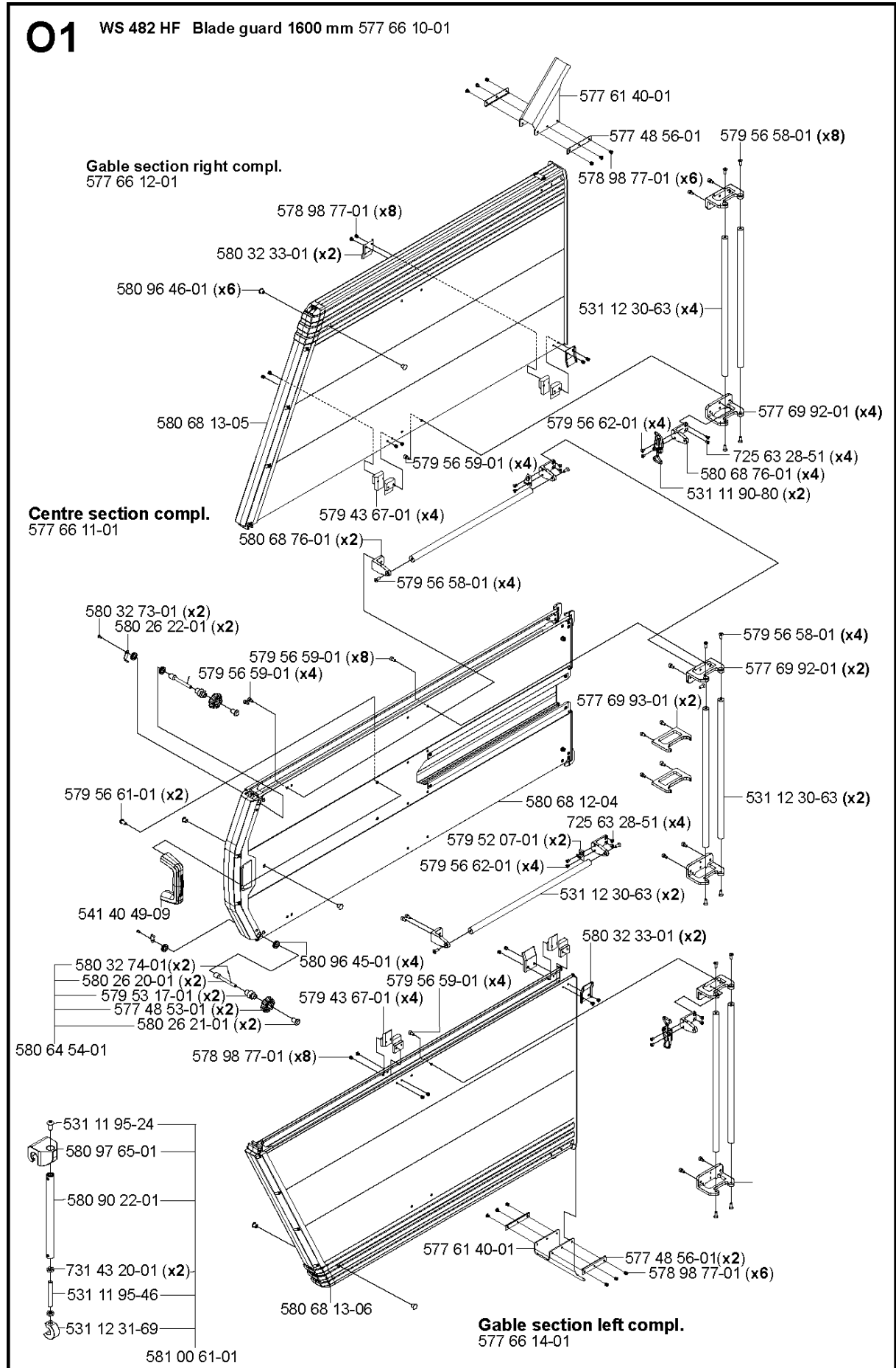
Centre section flush compl.
577 90 31-01



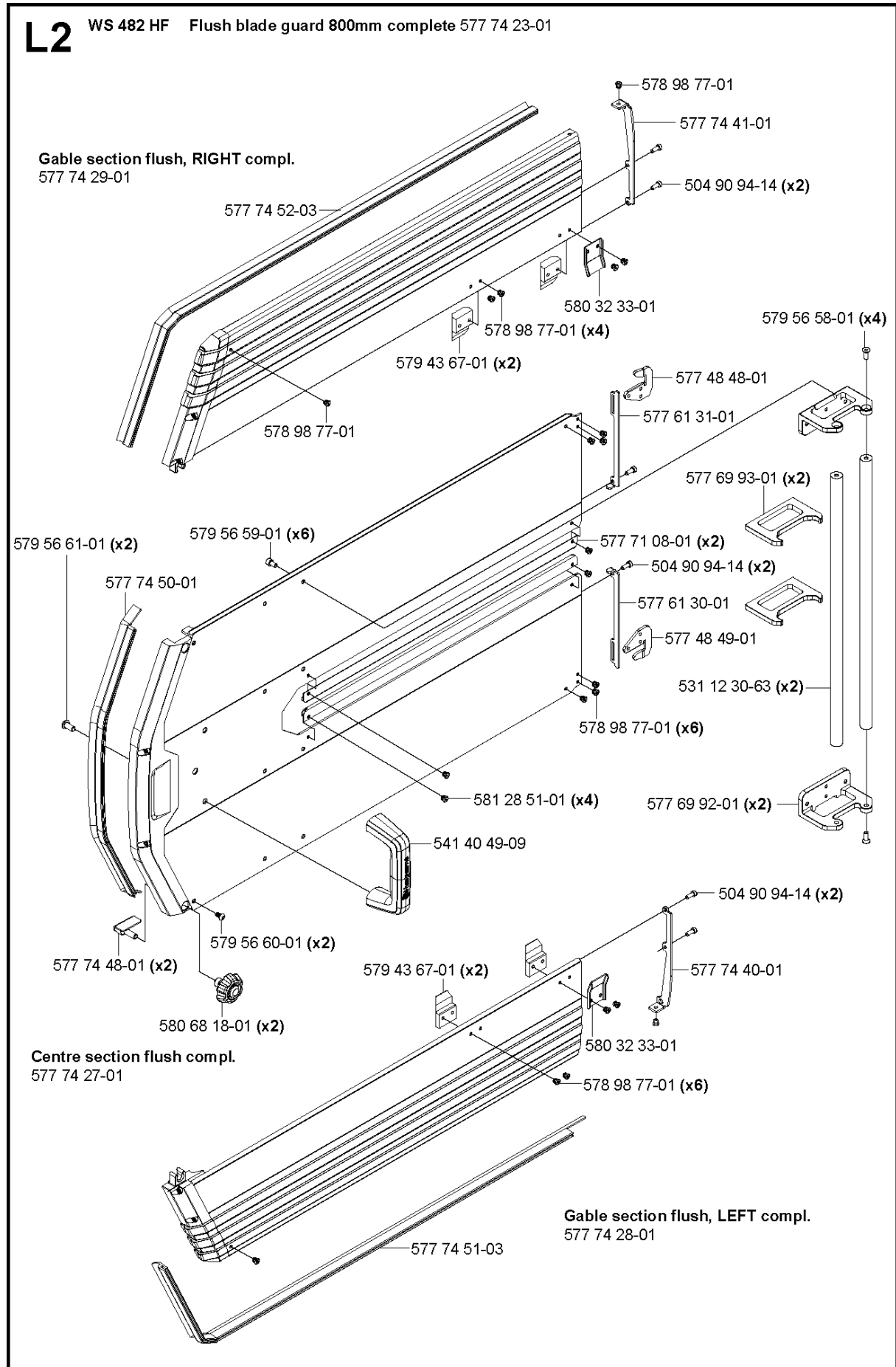
Gable section flush, LEFT compl.
577 74 36-01

Part No	Description	Remark	QTY KIT
504 90 94-14	SCREW ITXSCT		
531 11 90-80	SNAP LOCKING		
531 11 95-24	SCREW		
531 11 95-46	PIN		
531 12 30-63	RAIL		
531 12 31-69	CLAMP		
541 40 49-09	HANDLE		
577 48 48-01	HITCH		
577 48 49-01	HITCH		
577 61 30-01	LINK		
577 61 31-01	LINK		
577 69 92-01	FIXTURE		
577 69 93-01	FIXTURE		
577 71 08-01	GUIDE BAR		
577 74 26-01	BLADE GUARD		
577 74 36-01	GABLE		
577 74 37-01	GABLE		
577 74 46-01	COVER		
577 74 47-01	COVER		
577 74 48-01	FRAME		
577 74 50-01	STRIP		
577 74 51-06	COVER		
577 74 52-06	COVER		
577 90 31-01	BLADE GUARD		
578 98 77-01	RIVET		
579 43 67-01	GUIDE PLATE		
579 52 07-01	HOOK		
579 56 58-01	SCREW		
579 56 59-01	SCREW		
579 56 60-01	SCREW		
579 56 61-01	SCREW		
579 56 62-01	SCREW		
580 32 33-01	GUIDE		
580 68 18-01	KNOB		
580 68 76-01	ANGLE BRACKET		
580 68 76-02	ANGLE BRACKET		
580 90 22-01	ARBOR SHAFT		
580 97 65-01	HOOK		
581 00 61-01	STRUT		
581 28 51-01	RIVET		
725 63 28-51	SCREW IHCSFM		
731 43 20-01	HEXAGON THIN NUT		

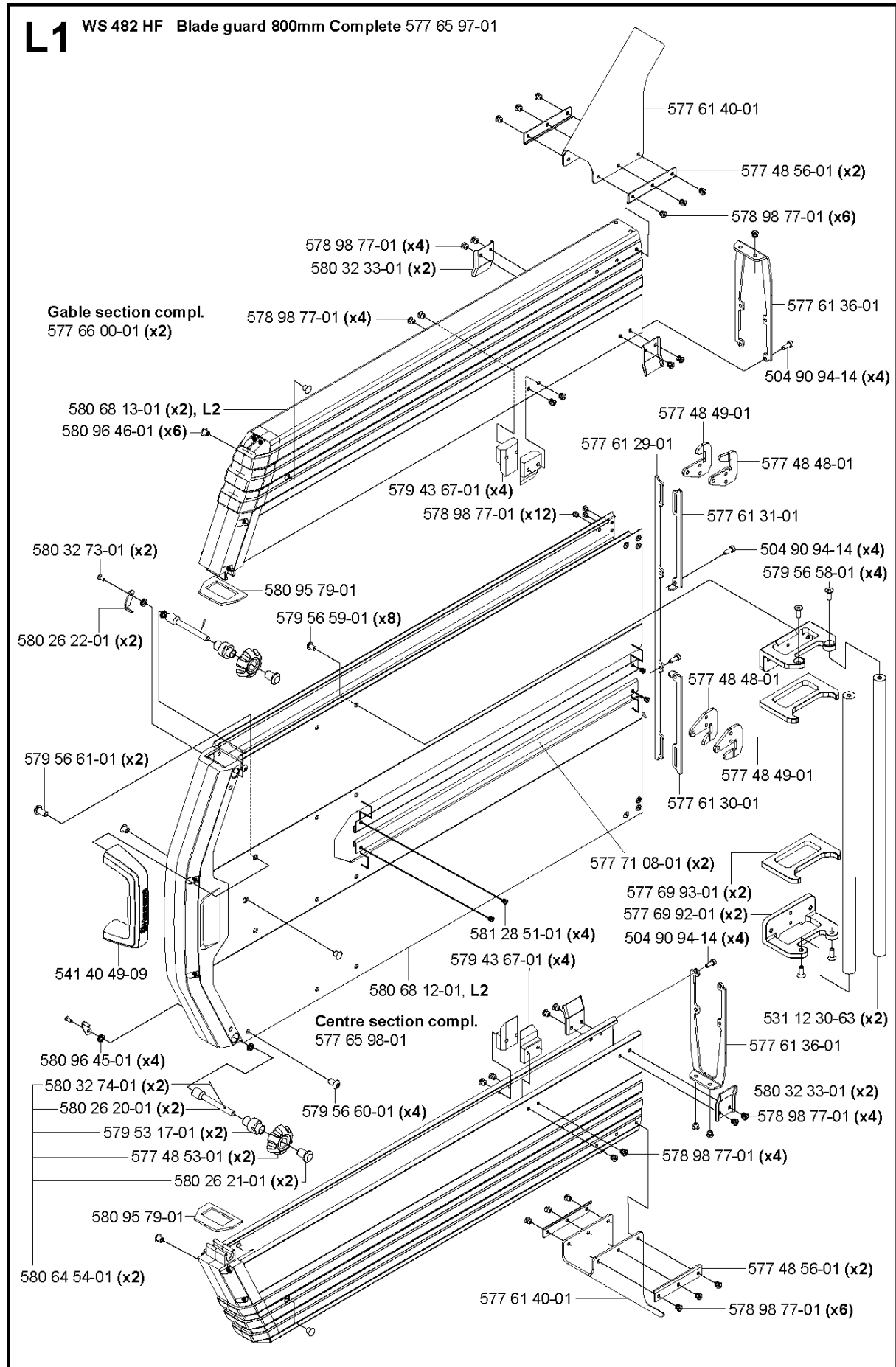
01 WS 482 HF Blade guard 1600 mm 577 66 10-01



Part No	Description	Remark	QTY KIT
531 11 90-80	SNAP LOCKING		
531 11 95-24	SCREW		
531 11 95-46	PIN		
531 12 30-63	RAIL		
531 12 31-69	CLAMP		
541 40 49-09	HANDLE		
577 48 53-01	KNOB		
577 48 56-01	WASHER		
577 61 40-01	SPRAY GUARD		
577 66 10-01	BLADE GUARD		
577 66 11-01	BLADE GUARD		
577 66 12-01	GABLE		
577 66 14-01	GABLE		
577 69 92-01	FIXTURE		
577 69 93-01	FIXTURE		
578 98 77-01	RIVET		
579 43 67-01	GUIDE PLATE		
579 52 07-01	HOOK		
579 53 17-01	CONE		
579 56 58-01	SCREW		
579 56 59-01	SCREW		
579 56 59-01	SCREW		1
579 56 61-01	SCREW		
579 56 62-01	SCREW		
579 56 62-01	SCREW		1
580 26 20-01	SCREW		
580 26 21-01	NUT		
580 26 22-01	HOOK		
580 32 33-01	GUIDE		
580 32 73-01	SCREW		
580 32 74-01	PEN		
580 64 54-01	KNOB		
580 68 13-05	GUARD		
580 68 76-01	ANGLE BRACKET		
580 68 76-02	ANGLE BRACKET		
580 90 22-01	ARBOR SHAFT		
580 96 45-01	V-RING		
580 96 46-01	RUBBER PLUG		
580 97 65-01	HOOK		
581 00 61-01	STRUT		
725 63 28-51	SCREW IHCSFM		
731 43 20-01	HEXAGON THIN NUT		



Part No	Description	Remark	QTY KIT
504 90 94-14	SCREW ITXSCT		
531 12 30-63	RAIL		
541 40 49-09	HANDLE		
577 48 48-01	HITCH		
577 48 49-01	HITCH		
577 61 30-01	LINK		
577 61 31-01	LINK		
577 69 92-01	FIXTURE		
577 69 93-01	FIXTURE		
577 71 08-01	GUIDE BAR		
577 74 23-01	BLADE GUARD		
577 74 27-01	BLADE GUARD		
577 74 28-01	GABLE		
577 74 29-01	GABLE		
577 74 40-01	COVER		
577 74 41-01	COVER		
577 74 48-01	FRAME		
577 74 50-01	STRIP		
577 74 51-03	COVER		
577 74 52-03	COVER		
578 98 77-01	RIVET		
579 43 67-01	GUIDE PLATE		
579 56 58-01	SCREW		
579 56 59-01	SCREW		
579 56 60-01	SCREW		
579 56 61-01	SCREW		
580 32 33-01	GUIDE		
580 68 18-01	KNOB		
581 28 51-01	RIVET		

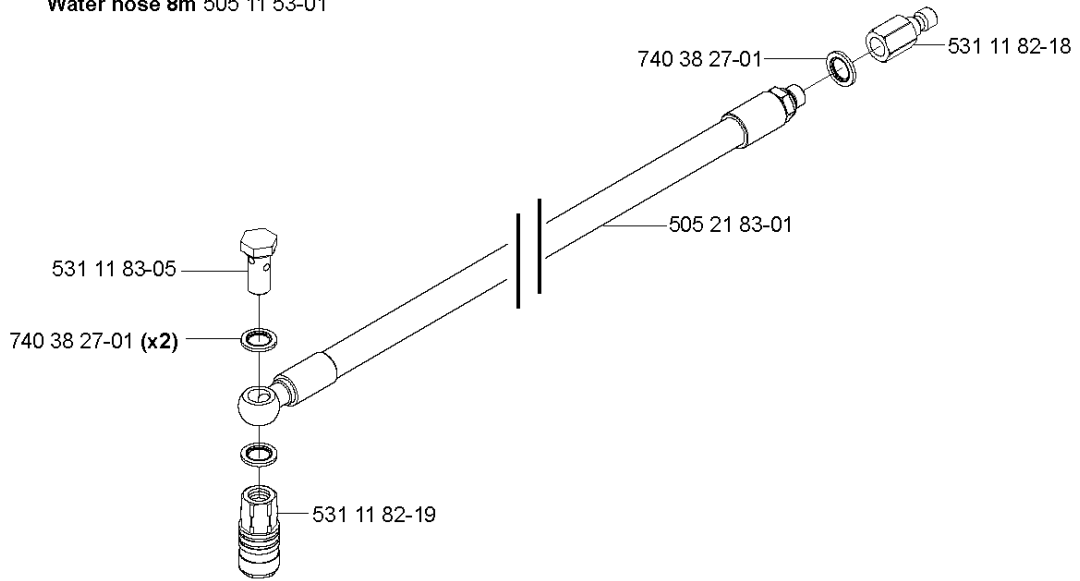


Part No	Description	Remark	QTY KIT
504 90 94-14	SCREW ITXSCT		
531 12 30-63	RAIL		
541 40 49-09	HANDLE		
577 48 48-01	HITCH		
577 48 49-01	HITCH		
577 48 53-01	KNOB		
577 48 56-01	WASHER		
577 61 29-01	LINK		
577 61 30-01	LINK		
577 61 31-01	LINK		
577 61 36-01	END COVER		
577 61 40-01	SPRAY GUARD		
577 65 97-01	BLADE GUARD		
577 65 98-01	BLADE GUARD		
577 66 00-01	GABLE		
577 69 92-01	FIXTURE		
577 69 93-01	FIXTURE		
577 71 08-01	GUIDE BAR		
578 98 77-01	RIVET		
579 43 67-01	GUIDE PLATE		
579 53 17-01	CONE		
579 56 58-01	SCREW		
579 56 59-01	SCREW		
579 56 60-01	SCREW		
579 56 61-01	SCREW		
580 26 20-01	SCREW		
580 26 21-01	NUT		
580 26 22-01	HOOK		
580 32 33-01	GUIDE		
580 32 73-01	SCREW		
580 32 74-01	PEN		
580 64 54-01	KNOB		
580 68 12-01	GUIDE BAR		
580 68 13-01	GUARD		
580 95 79-01	GASKET		
580 96 45-01	V-RING		
580 96 46-01	RUBBER PLUG		
581 28 51-01	RIVET		

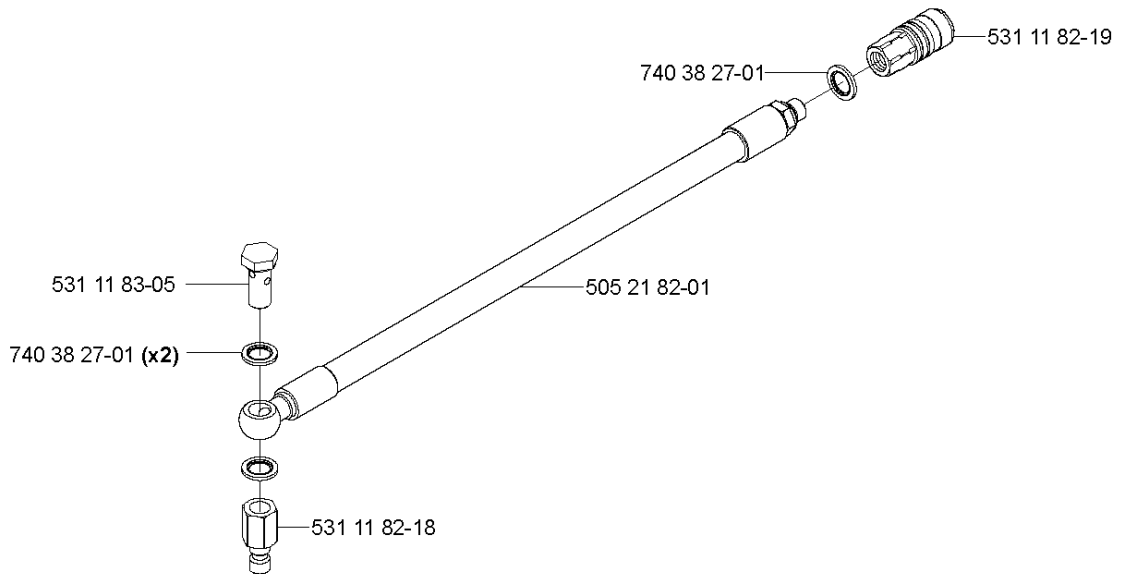
Q

WS 482 HF

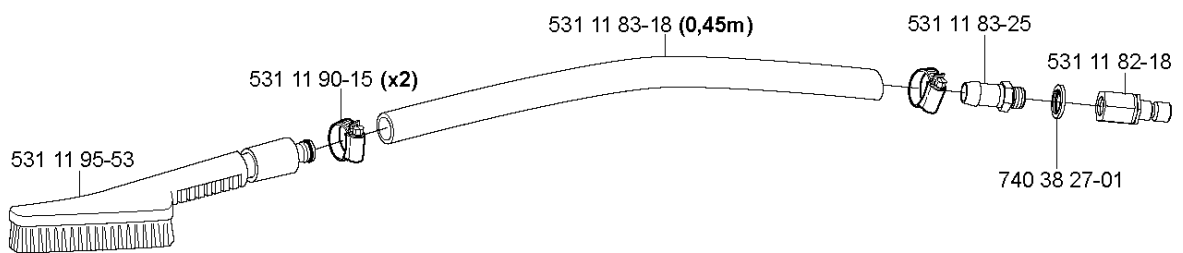
Water hose 8m 505 11 53-01



Water hose 1m 505 21 84-01



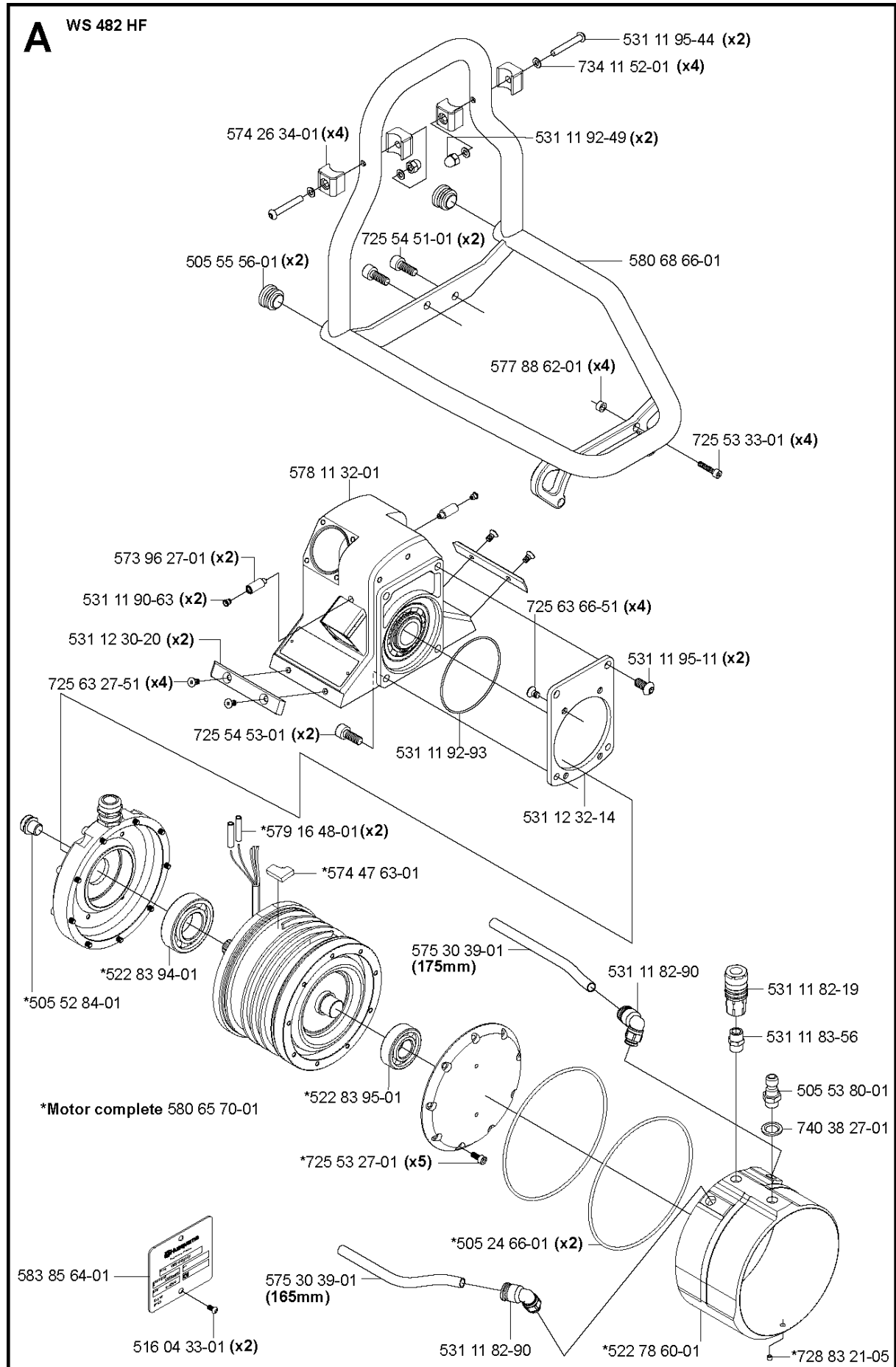
Cleaning brush complete 531 11 32-68



HOSE

WS482 HF, Valid from machine no. 1275, 2012-07

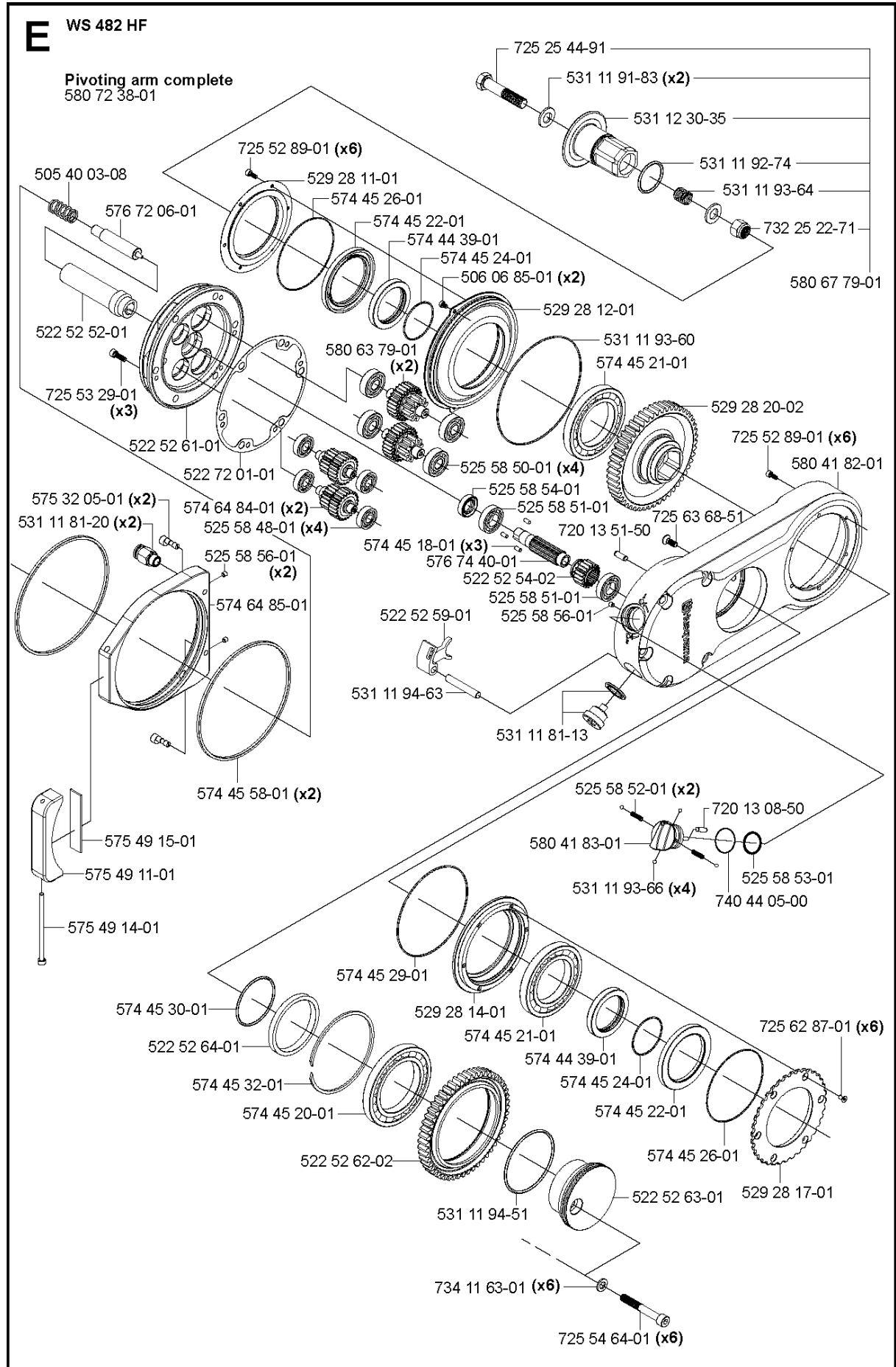
Part No	Description	Remark	QTY KIT
505 11 53-01	HOSE		
505 21 82-01	HOSE		
505 21 83-01	HOSE		
505 21 84-01	HOSE		
531 11 32-68	BRUSH		
531 11 82-18	QUICK COUPLING		
531 11 82-19	QUICK COUPLING		
531 11 83-05	SCREW		
531 11 83-18	HOSE KIT		
531 11 83-25	NIPPLE		
531 11 90-15	CLAMP		
531 11 95-53	BRUSH		
740 38 27-01	SEALING WASHER		



HOUSING

WS482 HF, Valid from machine no. 1275, 2012-07

Part No	Description	Remark	QTY KIT
505 24 66-01	O-RING		
505 52 84-01	VALVE		
505 53 80-01	QUICK COUPLING		
505 55 56-01	PLUG		
514 04 33-01	HANDLE		
516 04 33-01	SCREW		1
522 78 60-01	TUBE		
522 83 94-01	BEARING		
522 83 95-01	BEARING		
531 11 82-19	QUICK COUPLING		
531 11 82-90	COUPLING		
531 11 83-56	ADAPTER		
531 11 90-63	NIPPLE		
531 11 92-49	CAP NUT		
531 11 92-93	O-RING		
531 11 95-11	SCREW		
531 11 95-44	SCREW		
531 12 30-20	PLATE		
531 12 32-14	MOUNTING PLATE		
573 96 27-01	SPACING BLOCK		
574 26 34-01	BLOCK		
574 47 63-01	WATER SEPARATOR		
575 30 39-01	TUBE		
577 88 62-01	SPACER		
578 11 32-01	HOUSING		
579 16 48-01	CONNECTOR		
580 65 70-01	MOTOR ASSY		
580 68 66-01	HANDLE		
583 85 64-01	TYPE PLATE		
725 53 27-01	SCREW IHSCM		
725 53 33-01	SCREW IHSCM		
725 54 51-01	SCREW IHSCM		
725 54 53-01	SCREW IHSCM		
725 63 27-51	SCREW IHCSFM		
725 63 66-51	SCREW IHCSFM		
728 83 21-05	SCREW IHSETM		
734 11 52-01	WASHER		
740 38 27-01	SEALING WASHER		

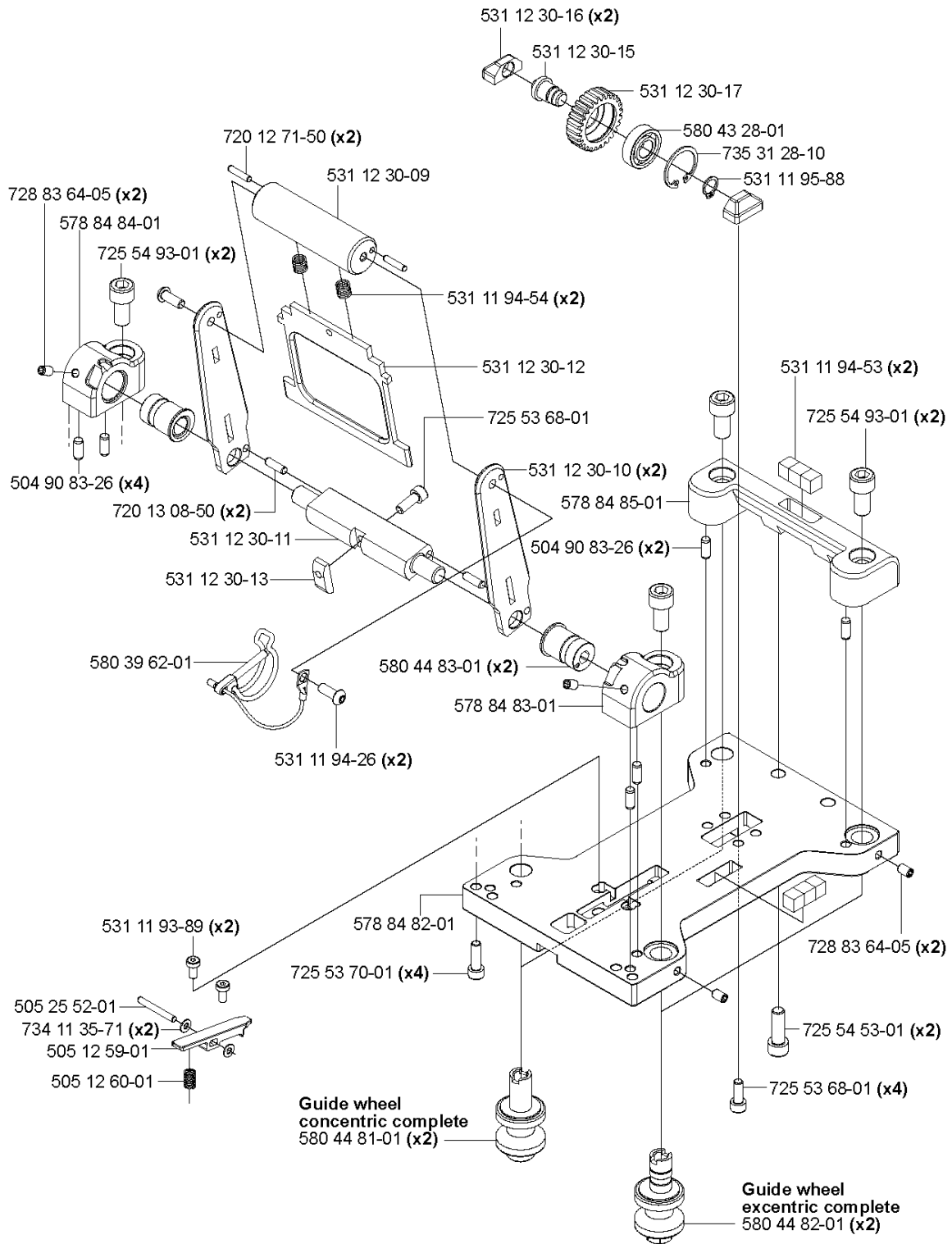


PIVOTING ARM

WS482 HF, Valid from machine no. 1275, 2012-07

Ref	Part No	Description	Remark	QTY KIT
505 40 03-08	505 40 03-08	CASE		
506 06 85-01	506 06 85-01	SCREW		
522 52 52-01	522 52 52-01	SHAFT ASSY		
522 52 54-02	522 52 54-01	GEAR WHEEL SHAFT		
522 52 59-01	522 52 59-01	GEARSHIFT LEVER		
522 52 61-01	522 52 61-01	GEAR		
522 52 62-02	522 52 62-02	DRIVER		
522 52 63-01	522 52 63-01	MANIFOLD		
522 52 64-01	522 52 64-01	INTERLAYER		
522 72 01-01	522 72 01-01	GASKET		
525 58 48-01	525 58 48-01	BEARING		
525 58 50-01	525 58 50-01	BEARING		
525 58 51-01	525 58 51-01	BEARING		
525 58 52-01	525 58 52-01	SPRING		
525 58 53-01	525 58 53-01	O-RING		
525 58 54-01	525 58 54-01	RADIAL SEAL		
525 58 56-01	525 58 56-01	SCREW		
529 28 11-01	529 28 11-01	REAR COVER		
529 28 12-01	529 28 12-01	BEARING COVER		
529 28 14-01	529 28 14-01	BEARING CAGE		
529 28 17-01	529 28 17-01	LID		
529 28 20-02	529 28 20-01	GEAR WHEEL		
531 11 81-13	531 11 81-13	PLUG		
531 11 81-20	531 11 81-20	COUPLING		
531 11 91-83	531 11 91-83	WASHER		
531 11 92-74	531 11 92-74	O-RING		
531 11 93-60	531 11 93-60	O-RING		
531 11 93-64	531 11 93-64	SPRING		
531 11 93-66	531 11 93-66	BALL		
531 11 94-51	531 11 94-51	O-RING		
531 11 94-63	531 11 94-63	PIN		
531 12 30-35	531 12 30-35	SHAFT		
574 44 39-01	574 44 39-01	RING		
574 45 18-01	574 45 18-01	PEN		
574 45 20-01	574 45 20-01	BEARING		
574 45 21-01	574 45 21-01	BEARING		
574 45 22-01	574 45 22-01	SEAL		
574 45 24-01	574 45 24-01	O-RING		
574 45 26-01	574 45 26-01	O-RING		
574 45 29-01	574 45 29-01	O-RING		
574 45 30-01	574 45 30-01	O-RING		
574 45 32-01	574 45 32-01	SNAP RING		
574 45 58-01	574 45 58-01	RADIAL SEAL		
574 64 84-01	574 64 84-01	GEAR ASSY		
574 64 85-01	574 64 85-01	COOLING AIR CONDUCTOR		
575 32 05-01	575 32 05-01	ADJUSTMENT DEVICE		
575 49 11-01	575 49 11-01	PROTECTOR BAR		
575 49 14-01	575 49 14-01	SCREW		
575 49 15-01	575 49 15-01	DAMPER		
576 72 06-01	576 72 06-01	SPACER		
576 74 40-01	576 74 40-01	GEAR WHEEL SHAFT		
580 41 82-01	580 41 82-01	PIVOTING ARM		
580 41 83-01	580 41 83-01	KNOB		
580 63 79-01	580 63 79-01	GEAR ASSY		
580 67 79-01	580 67 79-01	SHAFT ASSY		
580 72 38-01	580 72 38-01	PIVOTING ARM		
720 13 08-50	720 13 08-50	PARALLEL PIN		
720 13 51-50	720 13 51-50	PARALLEL PIN		
725 25 44-91	725 25 44-91	SCREW EHHM		
725 52 89-01	725 52 89-01	SCREW IHSCM		
725 53 29-01	725 53 29-01	SCREW IHSCM		
725 54 64-01	725 54 64-01	SCREW IHSCM		
725 62 87-01	725 62 87-01	SCREW IHCSFM		
725 63 68-51	725 63 68-51	SCREW IHCSFM		
732 25 22-71	732 25 22-71	HEXAGON LOCKING NUT		
734 11 63-01	734 11 63-01	WASHER		
740 44 05-00	740 44 05-00	O-RING		

G WS 482 HF Saw carriage 400 complete 505 22 69-03

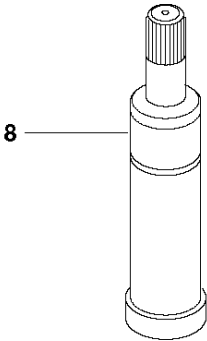
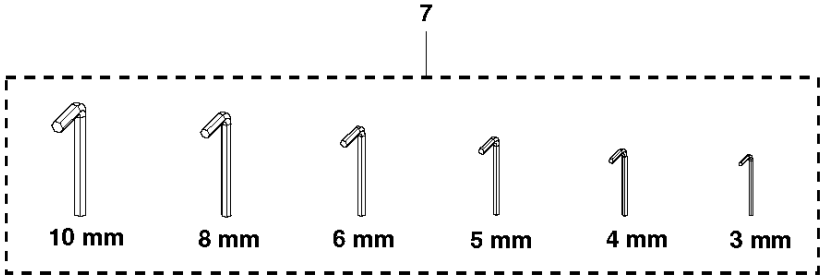
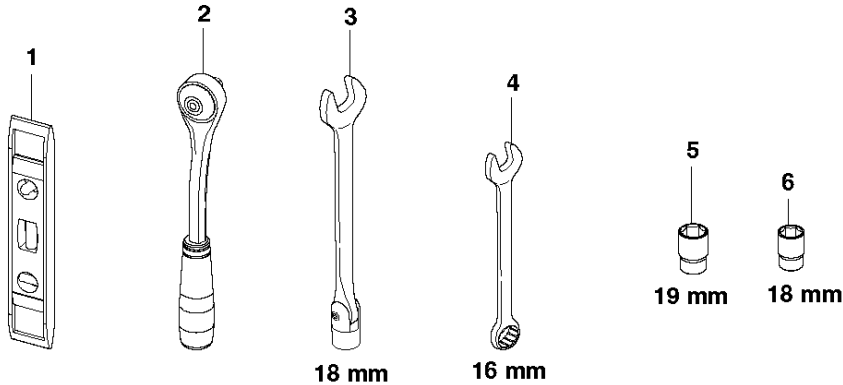


SAW CARRIAGE

WS482 HF, Valid from machine no. 1275, 2012-07

Part No	Description	Remark	QTY KIT
504 90 83-26	PIN		
505 12 59-01	ROCKER LEVER		
505 12 60-01	SPRING		
505 22 69-03	CARRIAGE		
505 25 52-01	PARALLEL PIN		
531 11 93-89	SCREW		
531 11 94-26	SCREW		
531 11 94-53	BLOCK		
531 11 94-54	SPRING		
531 11 95-88	CLIP		
531 12 30-09	HANDLE		
531 12 30-10	BAR		
531 12 30-11	SHAFT		
531 12 30-12	HANDLE		
531 12 30-13	COTTER		
531 12 30-15	AUTOMATIC FEEDING SYSTEM		
531 12 30-16	SHAFT		
531 12 30-17	GEAR WHEEL		
578 84 82-01	PLATE		
578 84 83-01	HOLDER		
578 84 84-01	HOLDER		
578 84 85-01	SOCKET		
580 39 62-01	LOCKING PIN		
580 43 28-01	BEARING		
580 44 81-01	WHEEL		
580 44 82-01	WHEEL		
580 44 83-01	SLEEVE		
720 12 71-50	PARALLEL PIN		
720 13 08-50	PARALLEL PIN		
725 53 68-01	SCREW IHSCM		
725 53 70-01	SCREW IHSCM		
725 54 53-01	SCREW IHSCM		
725 54 93-01	SCREW IHSCM		
728 83 64-05	SCREW IHSETM		
734 11 35-71	WASHER		
735 31 28-10	CIRCLIP		

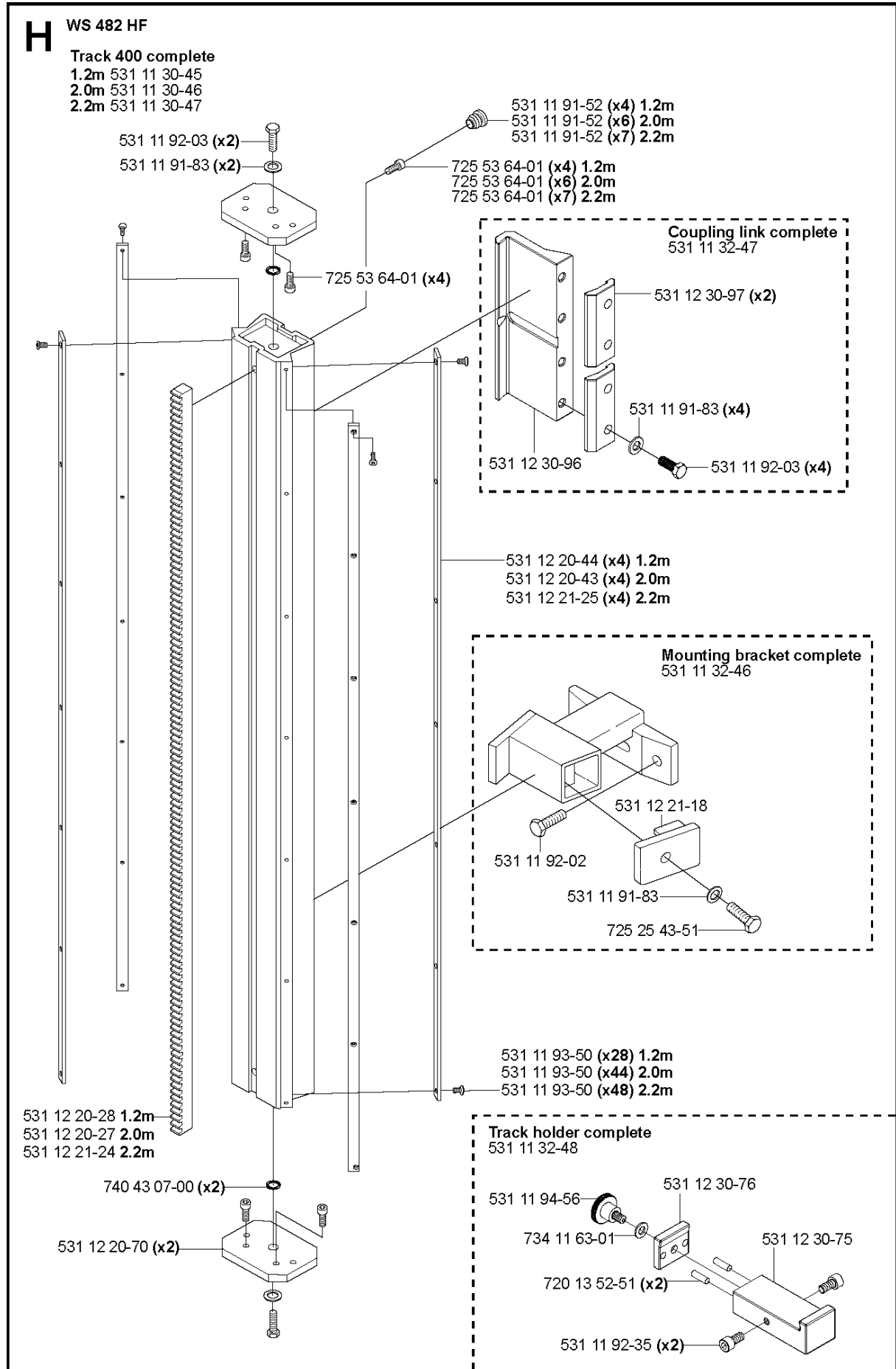
P WS 482 HF
Toolkit compl 501 37 52-01



TOOLS

WS482 HF, Valid from machine no. 1275, 2012-07

Ref	Part No	Description	Remark	QTY KIT
1	531 11 95-31	TOOL		
2	531 11 95-32	TOOL		
3	531 11 90-65	WRENCH		
4	531 11 95-33	TOOL		
5	531 11 95-41	SOCKET		
6	531 11 95-34	SERVICE TOOLS		
7	525 45 52-01	HEX KEY		
8	531 11 91-08	GREASE GUN		



TRACK SYSTEM

WS482 HF, Valid from machine no. 1275, 2012-07

Part No	Description	Remark	QTY KIT
531 11 30-45	TRACK		
531 11 30-46	TRACK		
531 11 30-47	TRACK		
531 11 32-46	BRACKET		
531 11 32-47	COUPLING		
531 11 32-48	HOLDER ASSY		
531 11 91-52	RUBBER PLUG		
531 11 91-83	WASHER		
531 11 92-02	SCREW		
531 11 92-03	SCREW		
531 11 92-35	SCREW		
531 11 93-50	SCREW		
531 11 94-56	SCREW		
531 12 20-27	GEAR		
531 12 20-28	GEAR		
531 12 20-43	GUIDE RAIL		
531 12 20-44	GUIDE		
531 12 20-70	PLATE		
531 12 21-18	WASHER		
531 12 21-24	GEAR		
531 12 21-25	GUIDE		
531 12 30-75	BRACKET		
531 12 30-76	PLATE		
531 12 30-96	COUPLING		
531 12 30-97	PLATE		
720 13 52-51	PARALLEL PIN		
725 25 43-51	SCREW EHHM		
725 53 64-01	SCREW IHSCM		
734 11 63-01	WASHER		
740 43 07-00	O-RING		