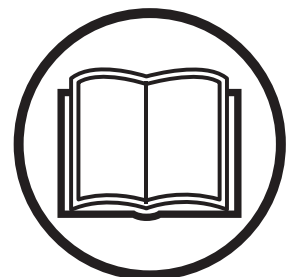


Operator's manual

DMT 700



Please read the operator's manual carefully and make sure you understand the instructions before using the machine.

English

KEY TO SYMBOLS

Symbols on the machine:

Some of the symbols below refer to the CE market.

WARNING! The machine can be a dangerous tool if used incorrectly or carelessly, which can cause serious or fatal injury to the operator or others.



Please read the operator's manual carefully and make sure you understand the instructions before using the machine.



Wear personal protective equipment. See instructions under the "Personal protective equipment" heading.



All displacement of the machine outside the cutting area shall be carried out with the tool not in rotation.



The guards should always be fitted on the machine. Never allow blade exposure to exceed 180°.



Check the cutting attachment. Never use blunt, cracked or damaged equipment.



The blades should be marked with the same or a higher speed than that stated on the machine's rating plate. A cutting blade running at a too high speed can break or cause serious damage.



Do not use the machine near ignitable substances or gases.



WARNING! Dust forms when cutting, this can cause injuries if inhaled. Use an approved breathing mask. Avoid inhaling exhaust fumes. Always provide for good ventilation.



Hot surface



Machinery hazard! Always keep all parts of your body away from blade and all other moving parts.



Caution, risk of cutting



Water supply adjustment



Lower blade



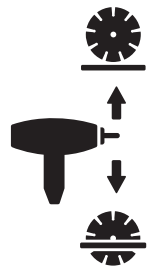
Slow



Fast



Switch for lower and raise the blade



Ignition on



Engine starts



Engine stops

STOP

Machine stop



Transmission stop



Refuelling

Fill with diesel fuel. Petrol must not be used under any circumstances.



Engine oil



Dipstick, maintain proper engine oil level



Do not raise the saw when checking engine oil level.



Keep saw leveled, without blade, when checking oil level.



This product is in accordance with applicable EC directives. If marked on the machine.



Noise emission to the environment according to the European Community's Directive. The machine's emission is specified in the Technical data chapter and on the label.



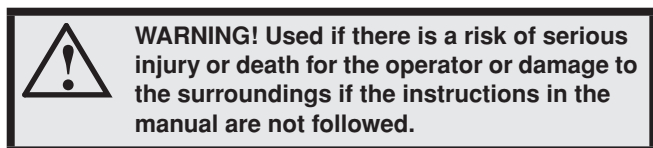
Other symbols/decals on the machine refer to special certification requirements for certain markets.

KEY TO SYMBOLS

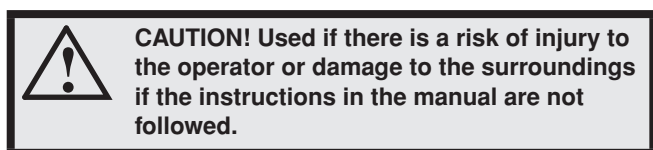
Explanation of warning levels

The warnings are graded in three levels.

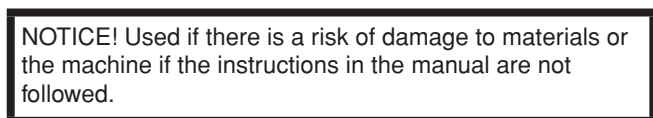
WARNING!



CAUTION!



NOTICE!



CONTENTS

Contents

KEY TO SYMBOLS

Symbols on the machine:	2
Explanation of warning levels	3

CONTENTS

Contents	4
----------------	---

PRESENTATION

Dear Customer,	5
Design and features	5
Floor saw - DMT 700	5
What is what on the floor saw - DMT 700	6
What is what on the blade guard	8
What is what on the control panel.....	9

MACHINE'S SAFETY EQUIPMENT

General	10
---------------	----

BLADES

General	12
DMT Diamond blades	12
Transport and storage	12

FUEL HANDLING

General	13
Fuel	13
Fueling	13
Transport and storage	13

BATTERY HANDLING

General	14
Connecting the battery	14
Disconnecting the battery	14
Starting the engine with a weak battery	14

OPERATING

Protective equipment	15
General safety precautions	15
Service	15
Basic working techniques	16
Handle position	17
Moving the machine	17
Fitting the blade	18
Blade depth stop	20
Straight line sawing	21
Transport and storage	22
Long-term storage	22

STARTING AND STOPPING

Before starting	23
Starting for the first time	23
Starting	23
Stopping	25

MENU SYSTEM

Menu overview	26
Menu system explanation	27
Explanation of the warning symbols on the display	29

MAINTENANCE AND SERVICE

General	30
Measures to take in advance of maintenance, service and trouble shooting	30
Cleaning	30
Service schedule	31

TROUBLESHOOTING

Incidents during sawing	38
Error messages	39

TECHNICAL DATA

Battery	42
Hydraulic fluid and lubricants	42
Technical data	43
Noise emissions	45

RELAYS AND FUSES

Relays and fuses -DMT 700	46
---------------------------------	----

EC DECLARATION OF CONFORMITY

EC Declaration of Conformity	47
------------------------------------	----

PRESENTATION

Dear Customer,

Thank you for choosing a Husqvarna product!

It is our wish that you will be satisfied with your product and that it will be your companion for a long time. A purchase of one of our products gives you access to professional help with repairs and services. If the retailer who sells your machine is not one of our authorised dealers, ask him for the address of your nearest service workshop.

This operator's manual is a valuable document. Make sure it is always at hand at the work place. By following its content (operating, service, maintenance etc.) the life span and the second-hand value of the machine can be extended. If you will sell this machine, make sure that the buyer will get the operator's manual.

More than 300 years of innovation

Husqvarna AB is a Swedish company based on a tradition that dates back to 1689, when the Swedish King Karl XI ordered the construction of a factory for production of muskets. At that time, the foundation was already laid for the engineering skills behind the development of some of the world's leading products in areas such as hunting weapons, bicycles, motorcycles, domestic appliances, sewing machines and outdoor products.

Husqvarna is the global leader in outdoor power products for forestry, park maintenance and lawn and garden care, as well as cutting equipment and diamond tools for the construction and stone industries.

Owner responsibility

It is the owner's/employer's responsibility that the operator has sufficient knowledge about how to use the machine safely. Supervisors and operators must have read and understood the Operator's Manual. They must be aware of:

- The machine's safety instructions.
- The machine's range of applications and limitations.
- How the machine is to be used and maintained.

National legislation could regulate the use of this machine. Find out what legislation is applicable in the place where you work before you start using the machine.

The manufacturer's reservation

Subsequent to publishing this manual Husqvarna may issue additional information for safe operation of this product. It is the owner's obligation to keep up with the safest methods of operation.

Husqvarna AB has a policy of continuous product development and therefore reserves the right to modify the design and appearance of products without prior notice.

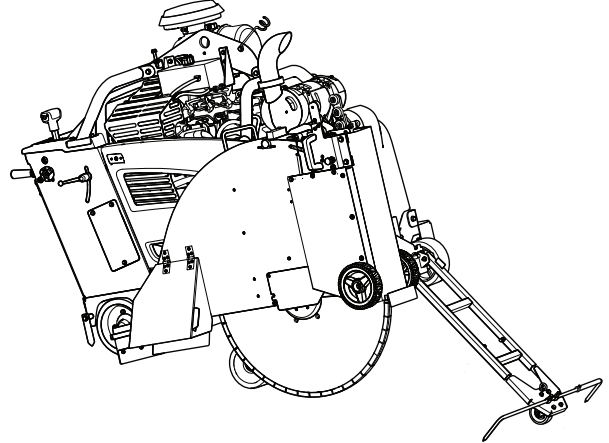
For customer information and assistance, contact us at our website: www.husqvarna.com or call at 1-800-845-1312.

Design and features

These walk behind floor saws are intended to be used with special diamond blades for micro trenching. They are designed to cut asphalt in different hardness classes.

Some of the unique features of your product are described below.

Floor saw - DMT 700



Engine

Powerful, water cooled and electronically controlled diesel engines for optimal torque curves.

Power transmission

Robust and efficient power transmission between engine and blade for maximum power at the blade shaft.

Tier 4 Final/ Stage IIIB

These products are Tier 4 Final / Stage IIIB compliant: New after treatment system of exhaust gases that complies with new laws in USA and EU.

E-track

Electronically controlled rear axle where the operator with a press of a single button can adjust to allow saw to track straight while cutting.

Digital display

Digital display offering a convenient overview of features and functions to operate the machine.

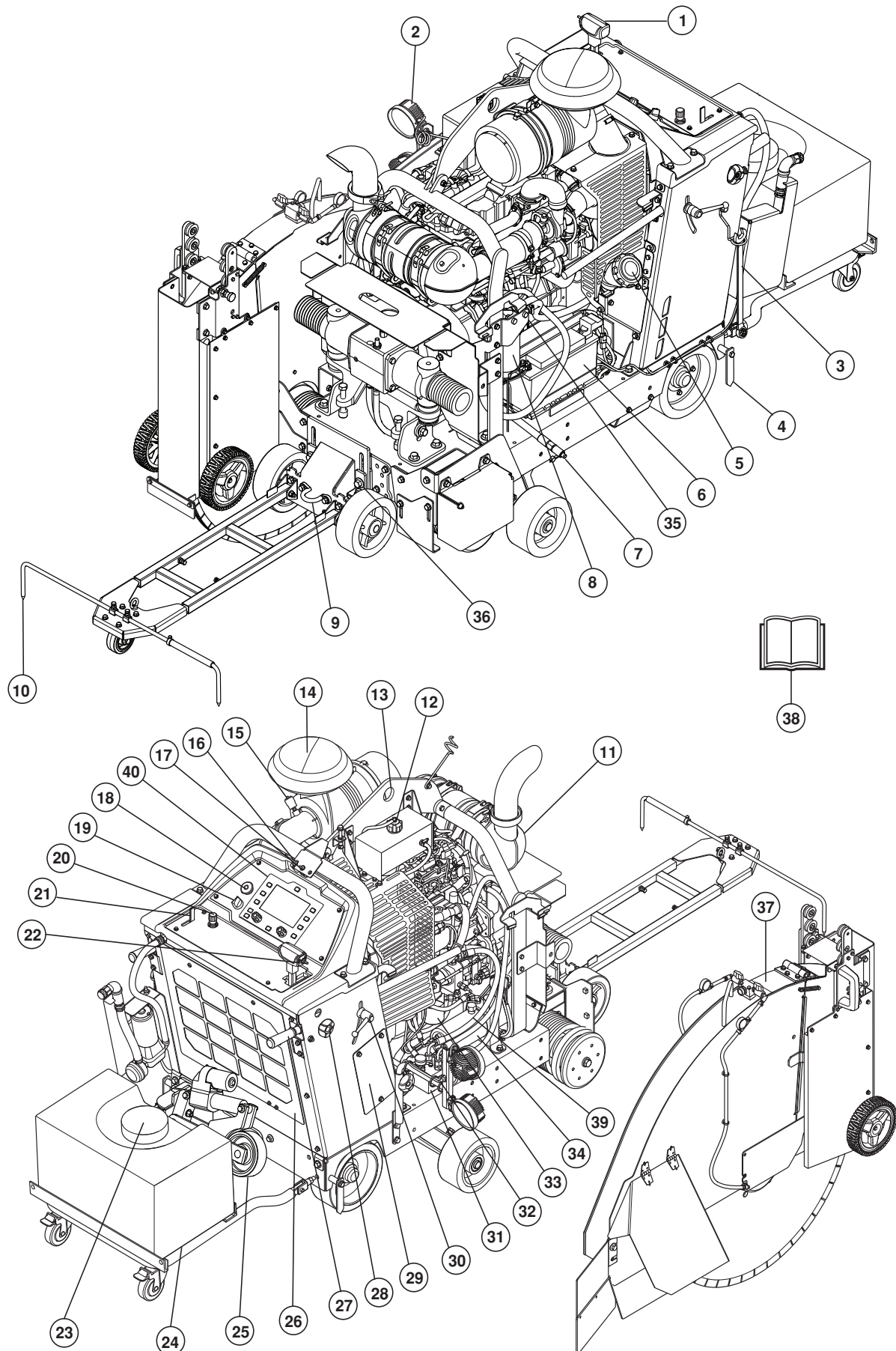
Front guide

Front guide has telescopic adjustment which gives good visibility and convenient storage

PRESENTATION

What is what on the floor saw - DMT 700

Covers removed for illustration purpose.

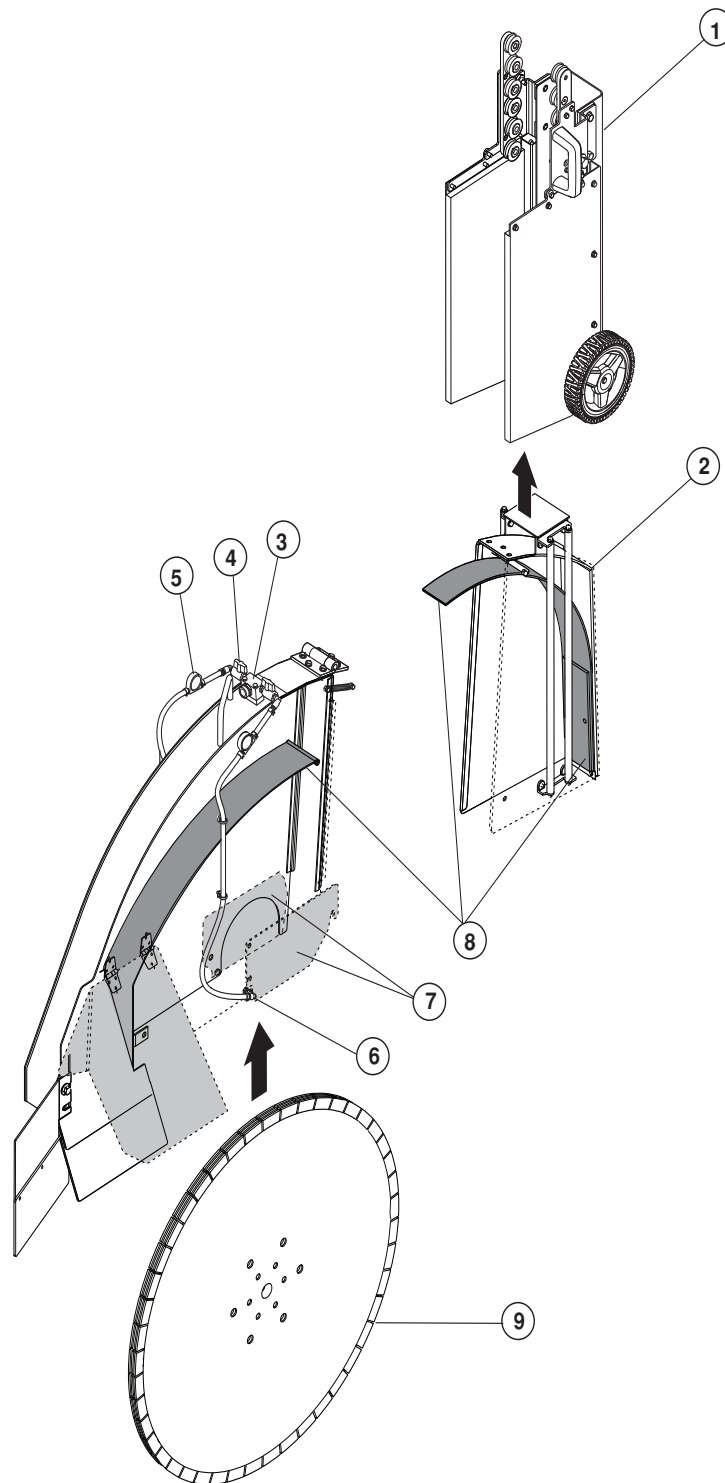


PRESENTATION

- 1 Speed control lever - directional forward/reverse
- 2 Working lights
- 3 Blade shaft wrench
- 4 Rear guide
- 5 Fuel tank filler cap
- 6 Battery
- 7 Engine oil drain hose with valve
- 8 Fuel filter water separator
- 9 Front tie-down lug
- 10 Front pointer - right side
- 11 Muffler - DOC
- 12 Radiator coolant fill
- 13 Lifting eye
- 14 Air filter
- 15 Air restriction indicator
- 16 5th wheel switch
- 17 Water pump switch
- 18 Machine stop
- 19 Engine start switch
- 20 Saw lowering speed control knob
- 21 Water valve
- 22 Raise/lower switch (blade)
- 23 Water tank fill
- 24 Water tank trolley
- 25 5th wheel
- 26 Radiator air filter
- 27 Handle bar
- 28 Locking knob for handlebar adjustment in length.
- 29 Relay and fuse box
- 30 Locking knob for handlebar adjustment in height
- 31 Transmission bypass valve
- 32 Switch for the lights
- 33 Hydraulic filter
- 34 Hydraulic reservoir
- 35 Engine oil check (dipstick)
- 36 Front support wheels adjustment
- 37 Blade guard
- 38 Operator's manual
- 39 Hydraulic reservoir fill
- 40 Control panel

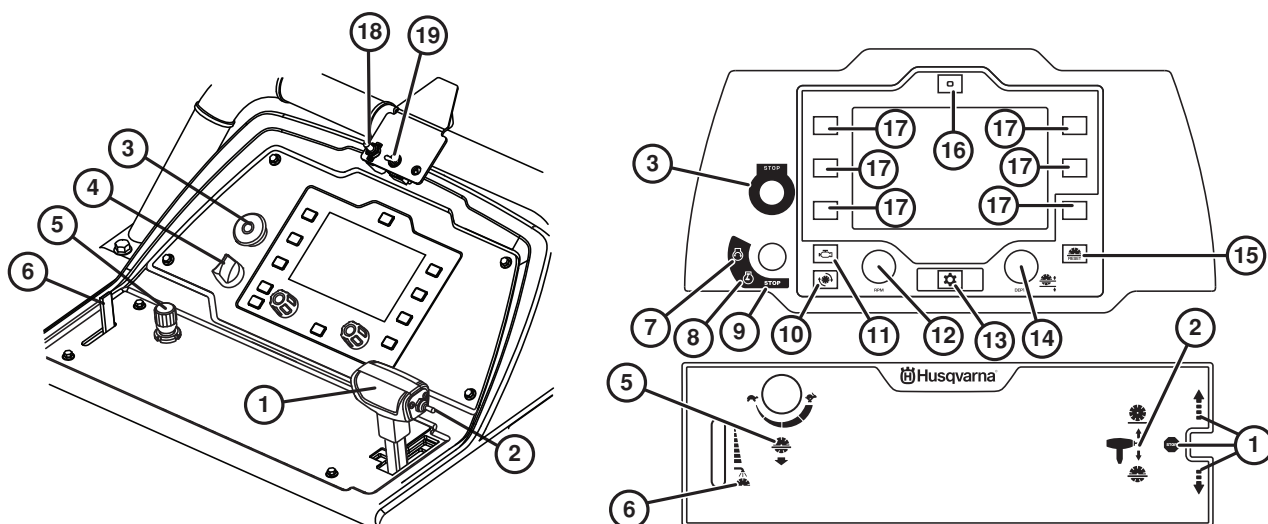
PRESENTATION

What is what on the blade guard



- 1 Front slider
- 2 Front shield
- 3 Water block
- 4 Water pressure spray nozzles
- 5 Blade guard latch
- 6 Water flow gage
- 7 Water flow lever
- 8 Wear plate
- 9 DMT diamond blade

PRESENTATION



The control panel is the operator's link to the machine. From here the operator can control anything from engine rpm, cutting depth of the blade and read the current status of the engine and the machine.

All information to the operator will be shown on a 7" anti glare coated screen with LED backlight, making it clearly visible in both very bright and pitch-black working sites.

Display texts are illustrated in English in the manual, but will appear in the chosen language on the product display. Depending on how the machine is configured, different menu options are valid. For more information, see section "Menu system".

Use the function buttons (17) on both sides of the display to choose the respective functions shown on the display.

What is what on the control panel?

- | | |
|-----------------------------------|--------------------------------|
| 1 Speed control lever | 10 Display of blade speed, rpm |
| 2 Raise/lower switch (blade) | 11 Display of motor speed, rpm |
| 3 Machine stop | 12 Throttle speed adjustment |
| 4 Engine start switch | 13 Menu button |
| 5 Saw lowering speed control knob | 14 Blade depth adjustment |
| 6 Water valve | 15 Blade depth reset button |
| 7 Engine starts | 16 E-track reset button |
| 8 Ignition on | 17 Select button |
| 9 Engine stop | 18 5th wheel switch |
| | 19 Water switch |

MACHINE'S SAFETY EQUIPMENT

General

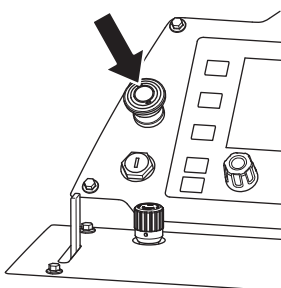


WARNING! Never use a machine that has faulty safety equipment! If your machine fails any checks contact your service agent to get it repaired. The engine should be switched off, and the Engine start switch in STOP position.

This section describes the machine's safety equipment, its purpose, and how checks and maintenance should be carried out to ensure that it operates correctly.

Machine stop

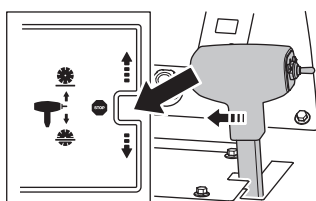
The machine stop is used to quickly switch off the engine and all electrical functions except lights.



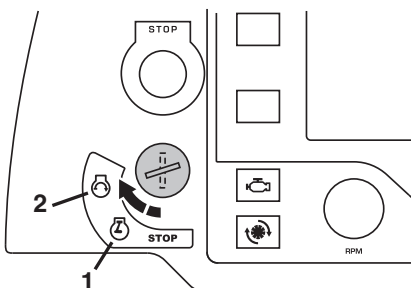
NOTICE! Do not use for routine stop.

Testing the machine stop

- Set Speed control lever to the STOP position. The engine will not start unless the Speed control lever is in the distinct STOP position.

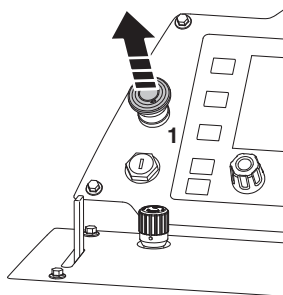


- Start the engine, turn the Engine start switch to ignition on position. Follow the procedure in the engine manual.
- When preheat symbol is displayed, wait for the engine glow plugs to warm the engine. When the preheat symbol disappears turn the Engine start switch to position engine start to start the engine.

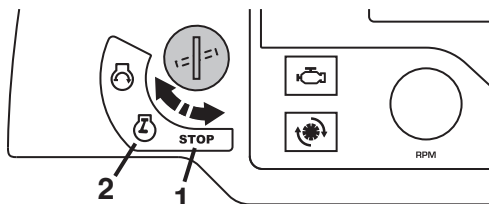


- Press the machine stop and check that the engine stops. This will set the machine in safe mode.

- Reset the machine stop by pulling the knob outward.



- Reset the safe mode by turning Engine start switch to the STOP position and back to ignition on position.



Blade guard



WARNING! Always check that the blade guard is fitted correctly before starting the machine.

This guard is installed above the blade and is designed to prevent parts of the blade or cutting fragments from being thrown towards the user and surrounding environment.

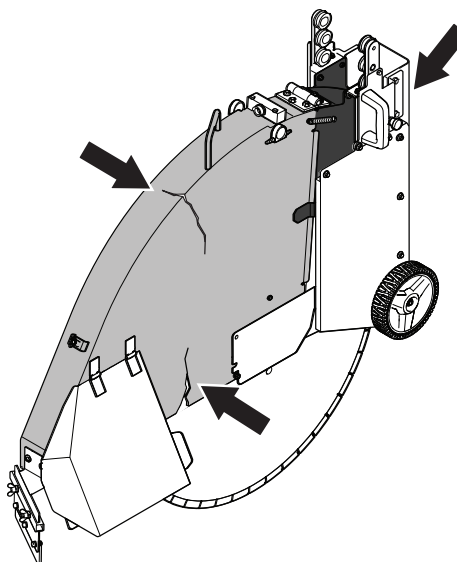
It will also protect the user from the blade and cool the blade with water when wet cutting.

Checking the blade guard



WARNING! Always check that the guard is correctly fitted before starting the machine. Also check that the blade is fitted correctly and is not damaged in any way. A damaged blade can cause personal injuries.

- Check that the blade guard is not damaged or cracked. Replace the blade guard if it is exposed to impact or is cracked. Make sure the front shield slides smoothly. If not, rinse and clean. Check the wear plates inside the blade guard.



MACHINE'S SAFETY EQUIPMENT

Protection covers

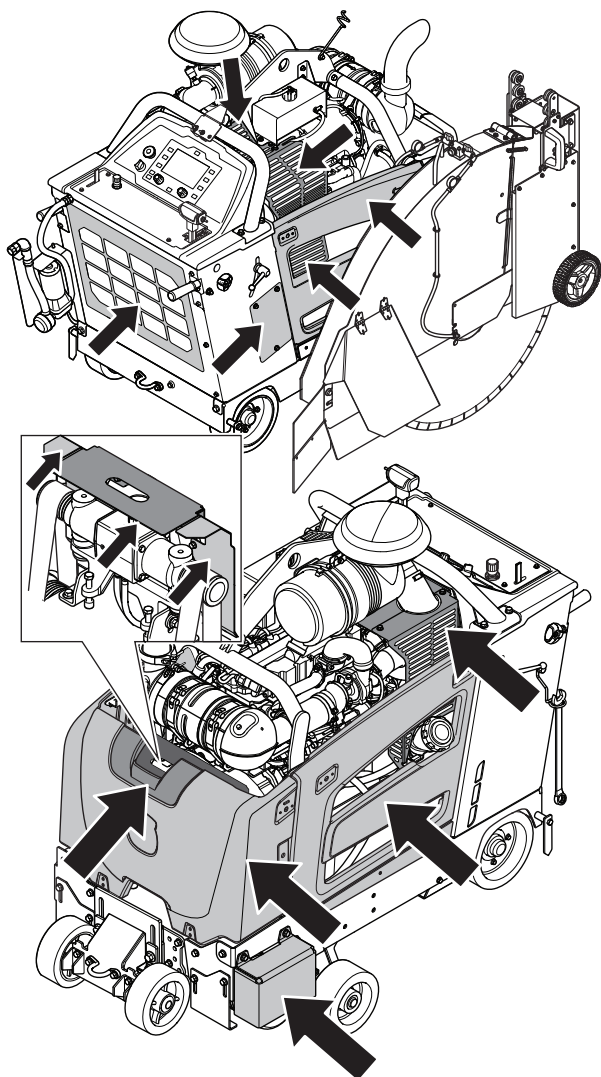


WARNING! Always check that the protection covers are correctly fitted before starting the machine.

Protective covers on the machine protect the user from rotating parts.

Checking the protective covers

- Check the protective covers for cracks or other damages. Replace damaged covers.



Muffler - DOC (Diesel Oxidation Catalyst)



WARNING! Never use a machine without a muffler, or with a faulty muffler. A damaged muffler may substantially increase the noise level and the fire hazard. Keep fire fighting equipment handy.

The muffler gets very hot during and after use. This also applies during idling. Be aware of the fire hazard, especially when working near flammable substances and/or vapours.

The muffler is designed to keep noise levels to a minimum and to direct exhaust fumes away from the user.

Inspecting the muffler - DOC (Diesel Oxidation Catalyst)

- Check regularly that the muffler is complete and secured correctly.

NOTICE! Muffler - DOC is a part of emissions compliance. Do not modify!

BLADES

General



WARNING! A cutting blade may burst and cause injury to the operator.

The cutting blade manufacturer issues warnings and recommendations for the use and proper care of the cutting blade. Those warnings come with the cutting blade.

A cutting blade should be checked before it is assembled on the saw and frequently during use. Look for cracks, lost segments (diamond blades) or pieces broken off. Do not use a damaged cutting blade.

Diamond Micro Trenching

For optimum performance the DMT 700 is intended to be used with Husqvarna DMT diamond-blade sets having a revolutionary design to maximize product reliability and consistency.



WARNING! Never use a blade for any other materials than that it was intended for. Never use a blade with a lower speed rating than that of the machine. Do not use circular saw blades or carbide tipped blades.

Blade instability

- The blade can wobble and burst if an excessive rotational speed rating is used.
- A lower rotational speed rating can stop the wobbling. Check for correct blade transmission configuration and/or gear. Otherwise replace the blade.

DMT Diamond blades

General

The cutting blade continues to rotate up to a minute after the motor has stopped. Never stop the blade with your hands. Personal injuries can occur.



WARNING! Diamond blades become very hot when used. An overheated blade is a result of improper use, and may cause deformation of the blade, resulting in damage and injuries.

Cutting metal generates sparks that may cause fire. Do not use the machine near ignitable substances or gases.

- Diamond blades consist of a steel core provided with segments that contain industrial diamonds.
- There are different DMT Diamond blade sets available depending on what material is to be cut to always give the best cutting speed and blade life ratio.
- Always use a sharp diamond blade with well exposed diamonds.

- Diamond blades can become dull when the wrong feeding pressure is used or when cutting certain materials. Working with a dull diamond blade causes overheating, which can result in the diamond segments coming loose.

Diamond blades and cooling

- During cutting the friction in the cut causes the diamond blade to be heated up. If the blade is allowed to get too hot this can result in loss of blade tensioning or core cracking.

Husqvarna DMT diamond-blade sets has a unique water and air cooling design to prevent problems linked to overheating. To feature this design it is important to get the same amount of water on both sides of the diamond-blade set. Using DMT diamond-blade sets without water can cause excessive heat build-up, resulting in poor performance, severe blade damage and is a safety hazard.

- Allow the blade to cool down before touching it.

Blade size, mm/inch	Maximum cutting depth, mm/inch
900/36	355/14

NOTICE! Always use blade flange size specified for current blade size. Never use damage flanges.

Transport and storage

- Store cutting blades in a safe environment to prevent damage.
- Store cutting blades in dry, frost free conditions.
- Inspect new blades for transport or storage damage.

FUEL HANDLING

General



WARNING! Running an engine in a confined or badly ventilated area can result in death due to asphyxiation or carbon monoxide poisoning.

Fuel and fuel fumes are highly flammable and can cause serious injury when inhaled or allowed to come in contact with the skin. For this reason observe caution when handling fuel and make sure there is adequate ventilation.

The exhaust fumes from the engine are hot and may contain sparks which can start a fire. Never start the machine indoors or near combustible material!

Do not smoke and do not place any hot objects in the vicinity of fuel.

Fuel

Engine

The engine on this machine is certified to the environmental exhaust emission standards as per US, EPA and CARB Tier 4 Final / EU stage IIIB.

The DMT 700 saw is equipped with a Deutz 4-cylinder Tier 4 Final / Stage IIIB diesel Engine.

Diesel fuel

- Use only Ultra Low Sulfur Diesel (0.0015% or 15ppm). For additional information regarding fuel please see engine manufacturer's manual supplied with the product.

NOTICE! Never use bio-diesel! Bio-diesel will harm the fuel hoses.

Engine oil

Always park the machine on a level surface before checking the oil. Keep saw leveled, without blade, when checking oil level.

- Check the oil level before starting the machine. A too low oil level can cause serious damage to the engine. See instructions in section "Maintenance and service".
- Never use oil intended for two-stroke engines. Use only Low ash engine oil, as specified in "Technical data".

NOTICE! Make sure there is always sufficient oil in the engine.

Fueling



WARNING! Always stop the engine and let it cool for a few minutes before refuelling.

When refuelling, open the fuel cap slowly so that any excess pressure is released gently.

Clean the area around the fuel cap.

Tighten the fuel cap carefully after refuelling. If the cap is not properly tightened the cap might vibrate lose and fuel may escape from the fuel tank creating a fire hazard.

Move the machine at least 3 m from the refuelling point before starting it.

Never start the machine:

- If you have spilled fuel or engine oil on the machine. Wipe off the spill and allow the remaining fuel to evaporate.
- If you have spilled fuel on yourself or your clothes, change your clothes. Wash any part of your body that has come in contact with fuel. Use soap and water.
- If the machine is leaking fuel. Check regularly for leaks from the fuel cap and fuel lines.

Transport and storage

- Store and transport the machine and fuel so that there is no risk of any leakage or fumes coming into contact with sparks or open flames, for example, from electrical machinery, electric motors, electrical relays/switches or boilers.
- When storing and transporting fuel always use approved containers intended for this purpose.

BATTERY HANDLING

General



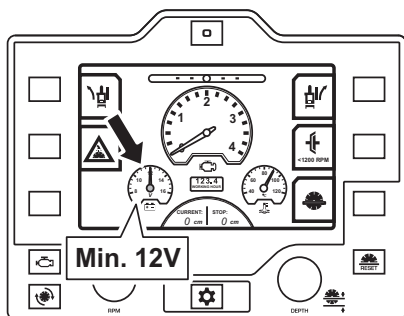
WARNING! Lead-acid batteries produce explosive gases. Avoid sparks, open flames and smoking close to batteries.

- Connecting or disconnecting the battery may cause sparks and short circuits.
- A spark or flame can cause a lead acid battery to explode.
- Never connect both terminals on the battery at the same time with a wrench or other metal as this may short-circuit the battery.
- Always handle battery with care.
- Unused batteries must be kept away from metal objects such as nails, coins, jewellery.
- Remove metal bracelets, watches, rings, etc., before connecting the battery. Wear gloves and protective goggles or a dust mask when working with the battery.
- The original battery is maintenance free. Do not attempt to open or remove caps or covers. It is usually not necessary to check or adjust the level of electrolyte.
- Replace only with a similar maintenance-free battery. See information in the Technical data section.
- When welding on the machine, always disconnect both battery cables and store cables away from battery poles.
- Always connect the minus pole of welding gear as close as possible to the weld spot.

NOTICE! Do not override maximum physical size of battery. Too large battery can damage or be damaged by adjacent parts.

Handle the battery carefully, of environmental considerations. Follow the local recycling requirements.

- Check the battery daily. When the Engine start switch is in ignition on position, battery gauge in the display should not reach under 12V.

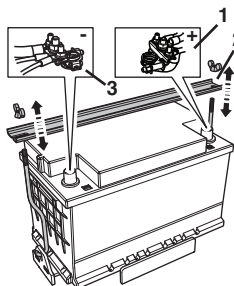


- If battery has difficulties holding voltage over long time periods when load is not applied, replace battery. For more information about recommended batteries, see section "Technical data"
- Charge battery regularly.
- Keep battery terminals and its accessories clean.

Connecting the battery

Note! Install and remove the battery cables only in the sequence described in this section.

- 1 Always connect positive terminal first.
- 2 Remount the battery holder.
- 3 Connect negative terminal.



Disconnecting the battery

- Remove the cables in the reverse order

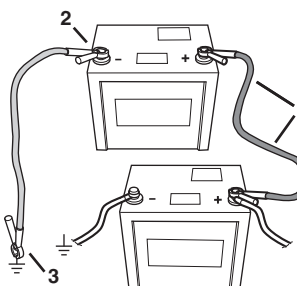
Starting the engine with a weak battery

If the battery is too weak to start the engine, it should be recharged.

When jump leads are used for emergency starting, follow the procedure below:

Connecting the jump leads

- 1 Connect each end of the red cable to the POSITIVE pole (+) on each battery, exercise care not to short circuit any of the ends against the chassis.
- 2 Connect one end of the black cable to the NEGATIVE pole (-) on the fully charged battery.
- 3 Connect the other end of the black cable to a good ENGINE BLOCK EARTH, away from the fuel tank and the battery.



Remove the cables in the reverse order

- The BLACK cable is removed from the engine block and then the fully charged battery.
- Finally the RED cable from both batteries.

Storage

- Store the battery cool and dry area.

OPERATING

Protective equipment

General

Make sure that there is always another person close at hand when you use the machine, so that you can call for help if an accident should occur.

Personal protective equipment

You must use approved personal protective equipment whenever you use the machine. Personal protective equipment cannot eliminate the risk of injury but it will reduce the degree of injury if an accident does happen. Ask your dealer for help in choosing the right equipment.



WARNING! The use of products such as cutters, grinders, drills, saws that sand or form material can generate dust and vapours which may contain hazardous chemicals. Check the nature of the material you intend to process and use an appropriate breathing mask.

Long-term exposure to noise can result in permanent hearing impairment. Always use approved hearing protection. Listen for warning signals or shouts when you are wearing hearing protection. Always remove your hearing protection as soon as the engine stops.

Always wear:

- Approved protective helmet
- Hearing protection
- Approved eye protection. If you use a face shield then you must also wear approved protective goggles. Approved protective goggles must comply with standard ANSI Z87.1 in the USA or EN 166 in EU countries. Visors must comply with standard EN 1731.
- Breathing mask
- Heavy-duty, firm grip gloves.
- Tight-fitting, heavy-duty and comfortable clothing that permits full freedom of movement. Cutting generates sparks that can ignite clothing. Husqvarna recommends that you wear flame-retardant cotton or heavy denim. Do not wear clothing made of material such as nylon, polyester or rayon. If ignited such material can melt and cling to the skin. Do not wear shorts
- Boots with steel toe-caps and non-slip sole.

Other protective equipment



CAUTION! Sparks may appear and start a fire when you work with the machine. Always keep fire fighting equipment handy.

- Fire Extinguisher
- Always have a first aid kit nearby.

General safety precautions

This section describes basic safety directions for using the machine. This information is never a substitute for professional skills and experience.

- Please read the operator's manual carefully and make sure you understand the instructions before using the machine. It is recommended that first time operators also obtain practical instruction before using the machine.
- Keep in mind that it is you, the operator that is responsible for not exposing people or their property to accidents or hazards.
- The machine must be kept clean. Signs and stickers must be fully legible.

Service

Have your machine serviced by a qualified repair person using only identical replacement parts. This will ensure that the safety of the machine is maintained.

Always use common sense

It is not possible to cover every conceivable situation you can face. Always exercise care and use your common sense. If you get into a situation where you feel unsafe, stop and seek expert advice. Contact your dealer, service agent or an experienced user. Do not attempt any task that you feel unsure of!



WARNING! The machine can be a dangerous tool if used incorrectly or carelessly, which can cause serious or fatal injury to the operator or others.

Never allow children or other persons not trained in the use of the machine to use or service it.

Never allow anyone else to use the machine without first ensuring that they have read and understood the contents of the operator's manual.

Never use the machine if you are fatigued, while under the influence of alcohol or drugs, medication or anything that could affect your vision, alertness, coordination or judgement.

OPERATING



WARNING! Unauthorized modifications and/or accessories may lead to serious injury or death to the user or others. Under no circumstances may the design of the machine be modified without the permission of the manufacturer.

Do not modify this product or use it if it appears to have been modified by others.

Never use a machine that is faulty. Carry out the safety checks, maintenance and service instructions described in this manual. Some maintenance and service measures must be carried out by trained and qualified specialists. See instructions under the Maintenance heading.

Always use genuine accessories.



WARNING! This machine produces an electromagnetic field during operation. This field may under some circumstances interfere with active or passive medical implants. To reduce the risk of serious or fatal injury, we recommend persons with medical implants to consult their physician and the medical implant manufacturer before operating this machine.

Work area safety

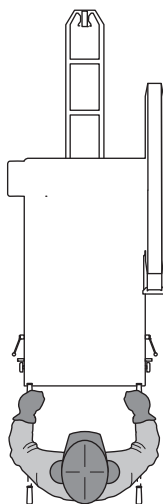


WARNING! You are responsible to ensure that animals and onlookers are not within the working area. Do not start cutting until the working area is clear.

- Observe your surroundings to ensure that nothing can affect your control of the machine.
- Ensure that no one/nothing can come into contact with the cutting equipment or be hit by parts if the blade breaks.
- Do not use the machine in bad weather, such as dense fog, heavy rain, strong wind, intense cold, etc. Working in bad weather is tiring and can lead to dangerous conditions, e.g. slippery surfaces.
- Never start to work with the machine before the working area is clear and you have a firm foothold. Look out for any obstacles with unexpected movement. Ensure when cutting that no material can become loose and fall, causing injury to the operator. Take great care when working on sloping ground.
- Ensure that the working area is sufficiently illuminated to create a safe working environment.
- Make sure that no pipes or electrical cables are routed in the working area or in the material to be cut.
- Running an engine in a confined or badly ventilated area can result in death due to asphyxiation or carbon monoxide poisoning.

Basic working techniques

- This machine is designed and intended for cutting of asphalt.
- Always saw in a manner that permits easy access to the machine stop.
- Check that no tools or other objects have been left lying on the machine.
- Never leave the machine unsupervised with the engine running.
- Always check that the blade guard is fitted correctly before starting the machine. Never cut without using the blade guard.
- Clearly mark out all cuts to be made before you start sawing, plan these so they can be carried out without danger to persons or the machine.
- Under all circumstances avoid grinding using the side of the blade; it will almost certainly be damaged, break and can cause immense damage. Only use the cutting section.
- Do not stand behind or in front of the blade path while the engine is running.
- Never cock, jam wedge or twist blade in a cut.
- Make sure that there is always another person close at hand when you use the machine, so that you can call for help if an accident should occur.
- Never stand behind or in front of blade path while the engine is running. The operator position is between the two handlebars.



OPERATING

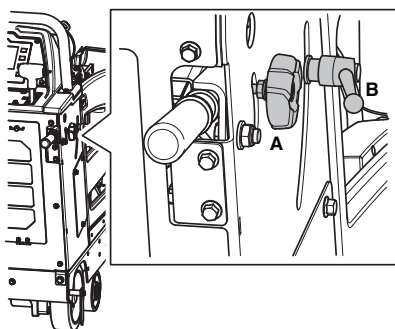
Handle position

CAUTION! Never use the handlebars to lift the saw.

Use the handlebars to maneuver the saw.

The position of the handlebars can be adjusted in height and length.

- Loosen the locking knob **A** to adjust the length.
- Turn handle adjustment locking knob **B** counterclockwise to unlock and reposition handlebar. Turn clockwise to lock handlebar in position. Set handle to most comfortable working height. Tighten the locking knob.

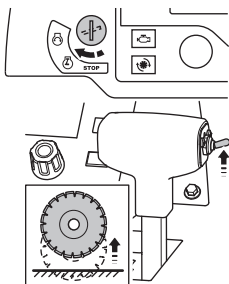


Moving the machine

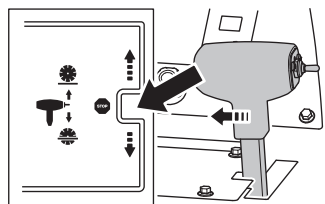
Prior to moving the machine, read and understand section "Starting and stopping".

Moving the machine with the engine off

- Turn Engine start switch to the ignition on position.
- Raise the saw by pressing up the Raise/lower switch on the Speed control lever until the blade (if installed) clears the pavement surface.



- Put Speed control lever into the STOP position.



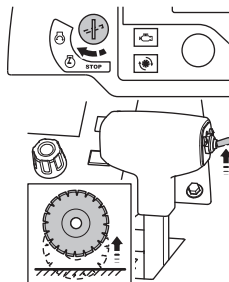
- Set the Transmission bypass valve counterclockwise to the up (neutral) position.
- The saw can now be moved by standing behind it and pushing (while holding the handlebars).



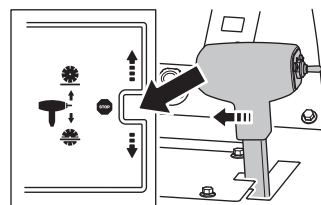
WARNING! Do not attempt to push the saw while it is in neutral position on a grade (or hill). The saw operator could lose control of the saw and cause injury to oneself or other persons in the area.

Moving the saw with the engine on

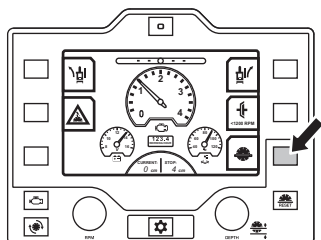
- Turn Engine start switch to the ignition on position.
- Raise the saw by pressing up the Raise/lower switch on the Speed control lever until the blade (if installed) clears the pavement surface.



- Put Speed control lever into the STOP position.



- The Engine throttle is at idle speed setting per default.
- Ensure that the Blade clutch is disengaged (if clutch installed).

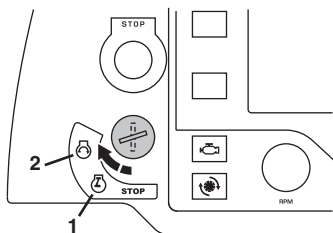


CAUTION! Pay special attention on clutchless machines, blade starts rotating at start. For safety reason, do not move the saw sideways or out of the working area with blade installed and rotating.

- While the Engine start switch is in the ignition on position, check the display and ensure that preheat symbol is turned off. If it is lit, the glow plugs warm the engine and the engine will not start. Wait a few seconds until turned off.

OPERATING

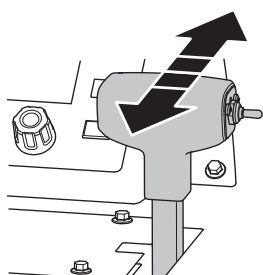
- When preheat symbol is off, turn the Engine start switch to the engines start position until the engine starts, then release the switch. It will return to ignition on position automatically.



NOTICE! If the engine does not start, turn Engine start switch to STOP position and check the display for any messages. If none, repeat above steps. Else, take measures according to message in the display prior to new starting attempt.

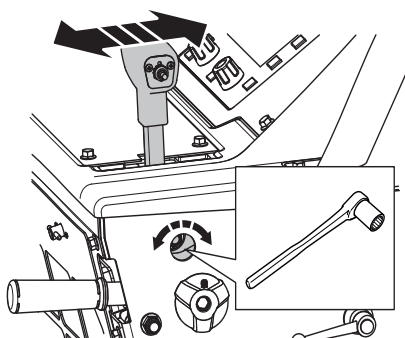
- Push the Speed control lever forward for forward saw movement, or to the rear for reverse saw movement.

The further you push the lever the faster the speed. For more information, see the "Technical data" section.



WARNING! Do not open the Transmission bypass valve to neutral while the saw is parked on a grade (or hill). The operator will lose control and injury or damage could occur.

Adjust the resistance on the Speed control lever with the nut on the side of the lever.



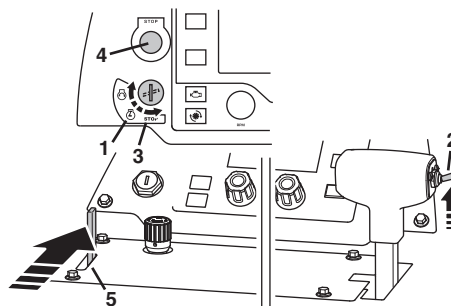
Fitting the blade

Prior to fitting the blade, read and understand section "Engine-Blade shaft-Gearbox speed adjustment".

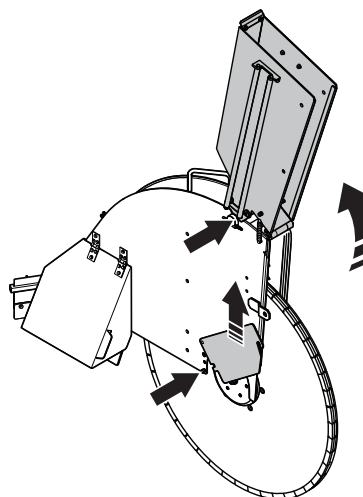
NOTICE! Check the blade's direction of rotation. The arrow on the blade and the blade guard indicates the direction of rotation.

- Set Engine start switch to ignition on position.

- Raise the saw to a high position using the Raise/lower switch on the Speed control lever.
- Set the Engine start switch to STOP position.
- Press the Machine stop on the control panel.
- Turn off the Water valve.



- Loosen the blade guard front bolt and lift the blade guard latch.



WARNING! Check that the blade, blade flanges and blade flange arbor are undamaged. Clean the contact surfaces of the blade and the blade flanges. Make sure the blade and the flanges are clean and free of dirt and debris before mounting the blade on the machine.

The blade shaft bolt on the right hand side of the saw has right hand threads and the blade shaft bolt on the left side of the saw has left hand threads. Replace the blade shaft bolt and plain washer when worn or damaged.

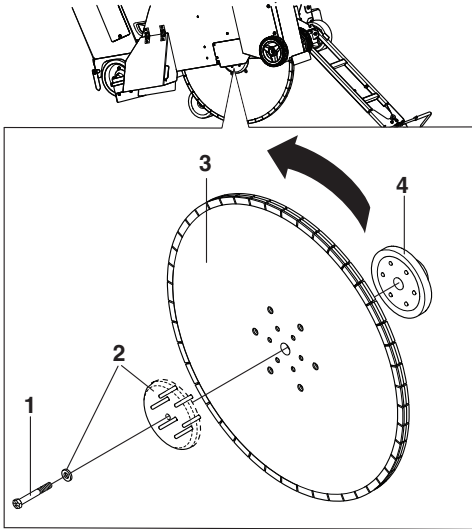
- Loosen blade shaft bolt which is used to clamp the blade between the inner and outer flange.
- Remove outer flange and plain washer.
- Fit diamond blade to outer flange arbor.
- Install outer flange with blade pre-installed into the inner flange making sure that the locking pins passes through the diamond blade and into the inner flange.

Always use plain washer with blade shaft bolt.

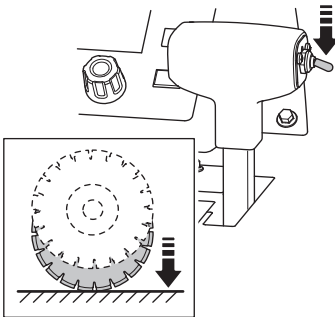
Rotate outer flange and the blade in the opposite direction of blade rotation to remove backlash.

OPERATING

Install and tighten blade shaft bolt and plain washer using the blade shaft wrench while firmly holding the blade.



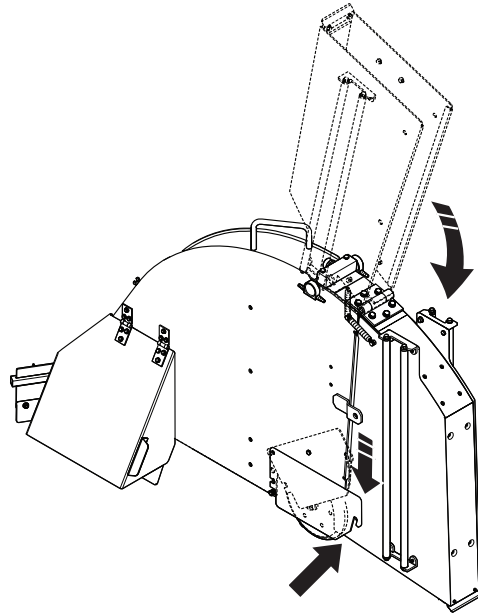
- Lower the saw by pushing the Raise/lower switch on the speed control lever downwards until the blade touches the surface to be cut. Then move the Raise/Lower switch back to neutral position.



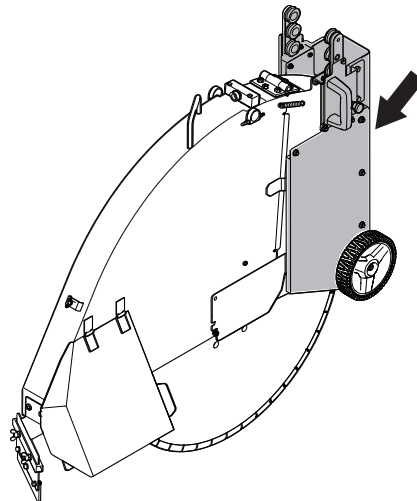
CAUTION! The touch should be smooth to prevent damaging the blade. Use Saw lowering speed control knob to slow down the lowering speed. Never let the front weight of the machine be supported by the blade since this will damage the blade.

- Tighten the blade shaft bolt firmly using the blade shaft wrench while resistance between diamond blade and ground helps to achieve proper and final tightening.

- Lower blade guard front and position the blade guard latch on the blade guard front bolt. Tighten the blade guard front bolt.



- Always attach the front slider protection on the blade guard. Make sure it moves up/down freely.



NOTICE! Do not operate this saw without the latch engaged and the bolt installed. Do not use if damaged. Do not operate this saw without the front-slider protection installed.

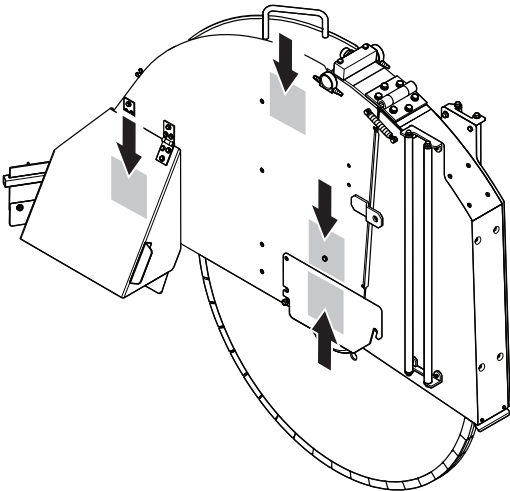
- Test run the machine and check that no unusual sounds occur. Unusual sounds are a sign of an incorrectly mounted blade.

Install the blade guard

Inspect blade guard and locks frequently.

OPERATING

Bolt on blade guards are secured by 4 screws.



Remove the blade guard

- 1 Disconnect the water hoses from the blade guard.
- 2 Unlock the front slider. Lift up and remove front slider.
- 3 Use a wrench to remove the 4 screws.

Blade depth stop

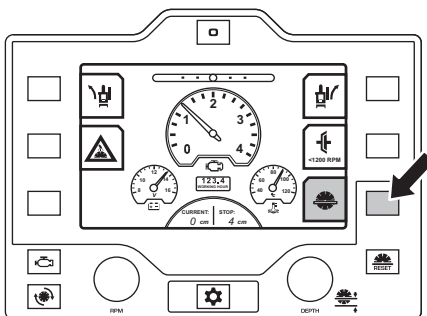
The cutting depth is set by adjusting the front support wheels up/down.

For more information about maximum cutting depth for different blade sizes, see section "Blades"

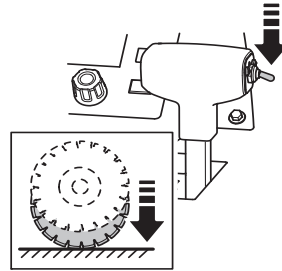
Setting the cutting depth

NOTICE! Only saw as deep as the job specifications require since deeper sawing can cause structural strength problems.

- Make sure that the machine is placed on a flat surface.
- Activate the Blade depth stop on the control panel.



- Lower the saw by pushing the Raise/lower switch on the speed control lever downwards until the blade touches the surface to be cut. This will be the reference point.

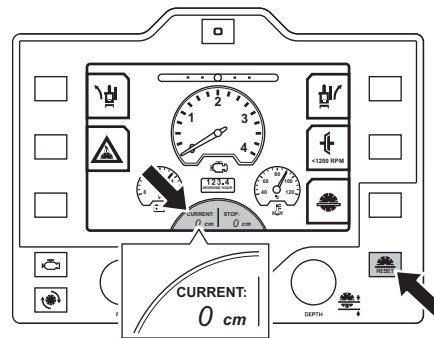


- Then move the Raise/Lower switch back to neutral position.

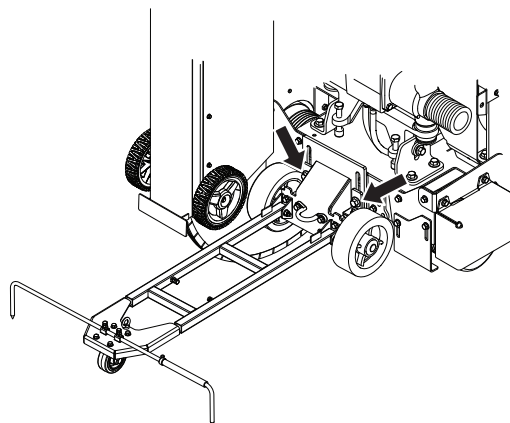


CAUTION! The touch should be smooth to prevent damaging the blade. Use Saw lowering speed control knob to slow down the lowering speed.

- Press the Blade zero button on the control panel. The current value in the display now reads 0.

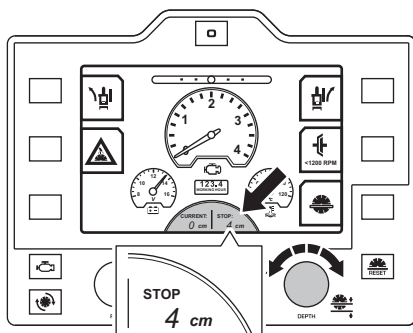


- Remove the blade.
- The maximum cutting depth is set by adjusting the front support up/down by loosening the 4 screws using a wrench. Always tighten the screws after setting the depth.

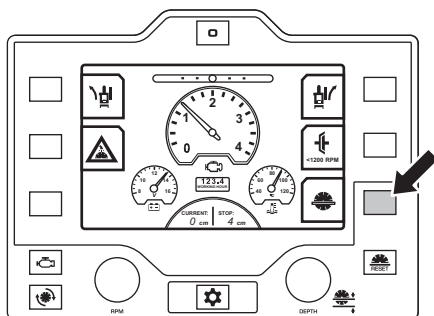


OPERATING

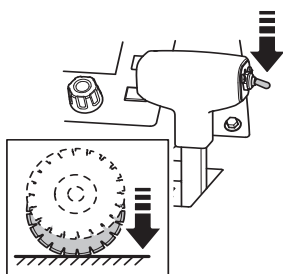
- Set the desired cutting depth by rotating the Depth knob. The chosen cutting depth is now shown in the display in small box called stop.



- When the blade is lowered the current cutting depth will be showing the difference between the reference point and the diamond blade.
- Lower the saw until the desired cutting depth is shown on the display.
- The saw will not lower to any depth greater than the stop position set in the display. If a deeper cut is required, turn the Blade depth knob to a new depth position. You can also disengage the Blade depth stop by pushing the Blade depth stop button to override the depth stop feature.
- Disengage the blade depth stop by pushing the blade depth stop button.



- The Raise/Lower switch shall be in the down position while trenching/cutting for maximum stability and productivity.

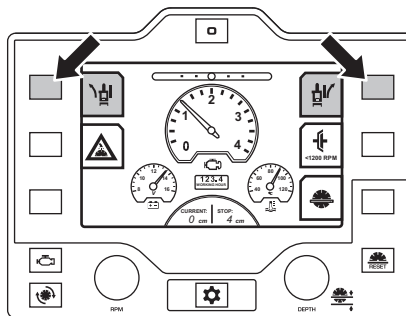


Straight line sawing

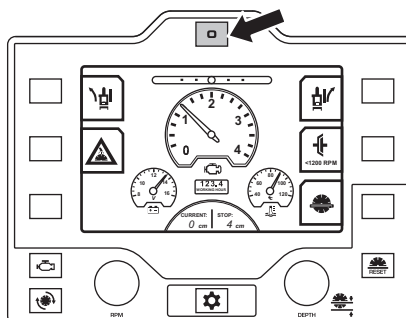
While cutting, the blade is creating resistance to driving force from rear wheels which will cause the machine to yaw in the same direction as the blade is mounted on. This effect can be counteracted by adjusting the angle of the rear axle using E-track or manual axle adjustments.

E-track axle adjustment

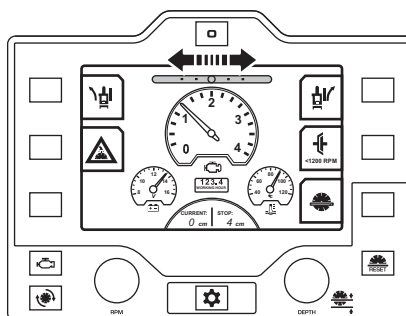
- On the control panel, push the E-track adjustment buttons representing left and right rear axle adjustments. Press several times for fine adjustments.



- By pressing the E-track zero button on the control panel the rear axle will return to predefined center angle.



- Return to previous setting by once again pressing the E-track zero button on the control panel.
- The E-track gauge on the display will indicate the present angle of the rear axle. The change is saved both if the ignition is switched off or if the machine is without power.

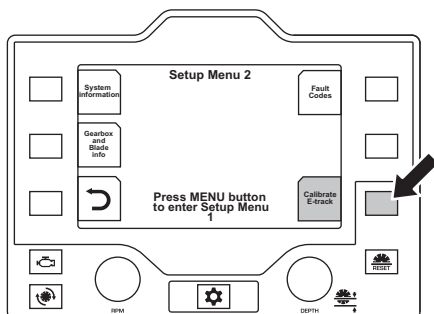


- Adjustments can be made both while sawing and not sawing.
- Visually confirm the axle movement and direction.

OPERATING

To set new center angle for E-track

- Adjust the rear axle to the desired new center angle.
- In the display enter the Setup menu 2 and press calibrate E-track button. This setting will be saved even after engine restart.



Transport and storage

- Remove the blade before transportation or storage of the machine, to avoid damage to the blade.
- Remove all adjustment tools and wrenches

Transport

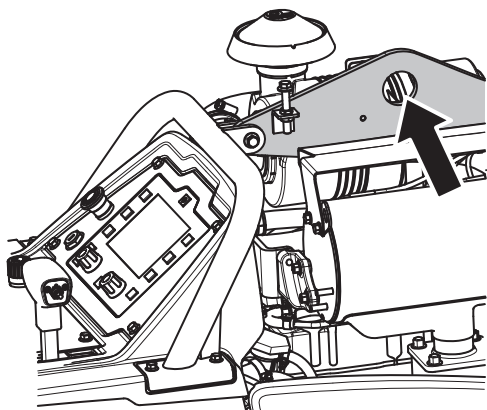
The saw is not equipped with a parking brake. It will slowly roll away by itself if left in steep grade or hill. Never leave the saw unattended in steep grade or hill unless properly secured.



WARNING! When moving the saw up and down ramps, with engine on, use extreme caution. For steep ramps, always use a winch. Never stand below the machine. Stand only beside. To go down a ramp, drive the saw backwards slowly. To go up a ramp, drive the saw forward slowly.

Lifting the saw

- Observe care when lifting. You are handling heavy parts, which imply the risk of pinch injuries or other injuries.
- Always use the machine mounted lifting eye when lifting.



To transport by vehicle

- Secure the equipment during transportation in order to avoid transport damage and accidents. Use the factory installed tie down lugs on the saw, front and rear to prevent movement during transport.
- Do not tow this saw with another vehicle as this may damage drive components.

Storage

Store the equipment in a lockable area so that it is out of reach of children and unauthorized persons.

- Stop the engine by turning the Engine start switch to the STOP position.
- Put Speed control lever into the STOP position.
- If there is a risk of freezing, the machine must be drained of any remaining water coolant in the gearbox.

For transport and storage of fuel and battery, see the section "Fuel handling" and "Battery handling".

For transport and storage of Blades, see the section "Blades".

Long-term storage

Ensure the machine is cleaned and that a complete service is carried out before long-term storage.

- Remove the blade for storage and store it carefully.
- Grease all nipples before storage.
- Disconnect negative terminal and secure in safe distance from battery.
- Trickle charge the battery during long-term storage.
- When storing the machine for long periods the fuel tank must be full. This will minimize condensated water in the fuel system.
- Store the machine and its equipment in a dry and frost proof place.
- If the machine is stored outside, cover the machine.
- Check that the engine coolant's freezing point is adequate for temperatures where the machine is stored.
- Drain water from gearbox
- Check and empty water in fuel filter water separator.
- Change engine oil after a long-term storage

STARTING AND STOPPING

Before starting



WARNING! Please read the operator's manual carefully and make sure you understand the instructions before using the machine.

Wear personal protective equipment. See instructions under the "Personal protective equipment" heading.

Make sure no unauthorised persons are in the working area, otherwise there is a risk of serious personal injury.

- Perform daily maintenance. See instructions in section "Maintenance and service".
- Check that the blade is not in contact with anything when the machine is started.

NOTICE! Read the operator's manual supplied by the engine manufacturer.

Starting for the first time

- Check engine oil level without blade and the saw horizontal for a flat saw level.
- Connect battery cables. The floor saw unit is supplied with no battery cables connected.

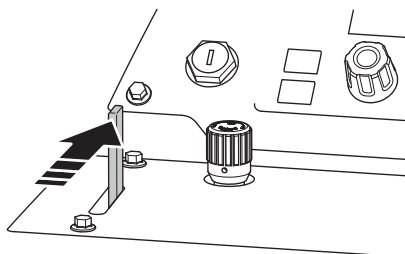
For some markets batteries are not supplied due to safety reason during transportation. Install a new battery.

For more information, see the "Technical data" section.

- Check coolant level
- Check and set units on the control panel (temperature and measures).
- Choose language on the control panel

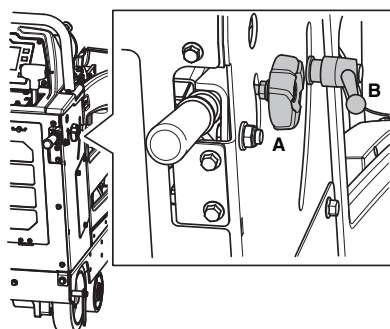
Starting

- Connect the machine to a water supply. Turn off the Water valve.

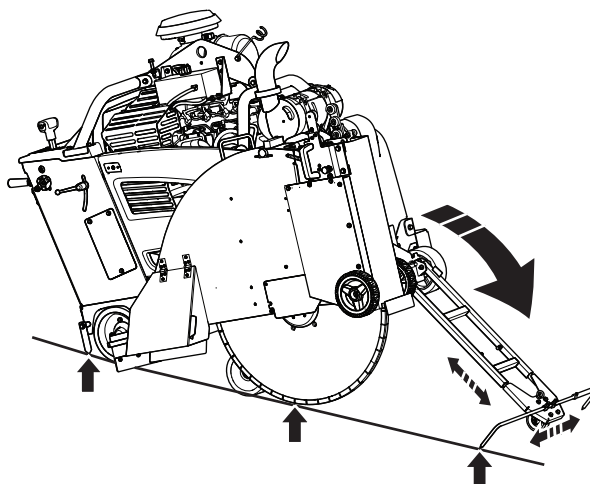


- Mark the cuts to be made.

- Pull out handle bars to desired length and height and tighten the knobs.

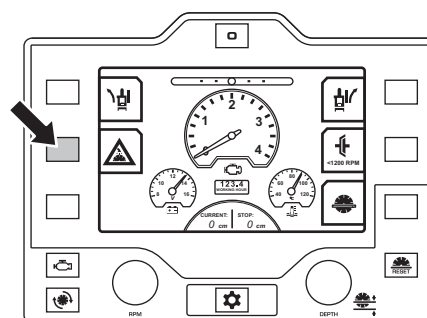


- Lower the front guide and align the front guide, rear guide and the diamond blade with the line on the surface. The front guide is telescopic, adjust the length with the screws on the inside of the front guide.



Start the engine

- To start the saw when no water pressure is present, disengage the Water safety switch.

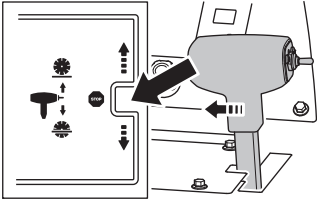


Water safety system

Water is used to prevent overheating the blade while controlling the dust that results from sawing. The water safety system monitors the water pressure to the machine and interrupts the sawing process if the pressure drops.

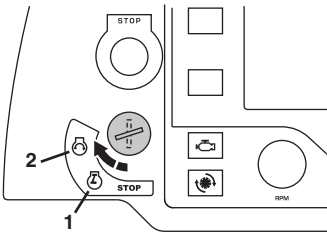
STARTING AND STOPPING

- Set Speed control lever to the STOP position. The engine will not start unless the Speed control lever is in the distinct STOP position.



NOTICE! Check to be certain, the transmission bypass valve is closed in the down position.

- When preheat symbol is displayed, wait for the engine glow plugs to warm the engine. When the preheat symbol disappears turn the Engine start switch to position engine start to start the engine.



- Let the engine warm up for several minutes with Engine throttle at idle speed (minimum).



CAUTION! Pay special attention on clutchless machines, blade starts rotating at start. For safety reason, do not move the saw sideways or out of the working area with blade installed and rotating.

NOTICE! If all start conditions are not fulfilled this will be shown on the display. Perform the action and try to start the engine again.

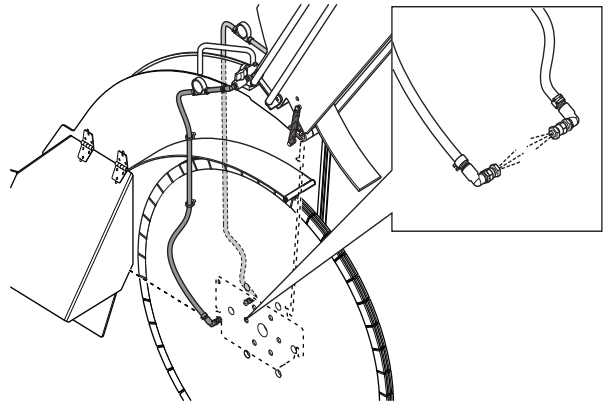
Start the cutting



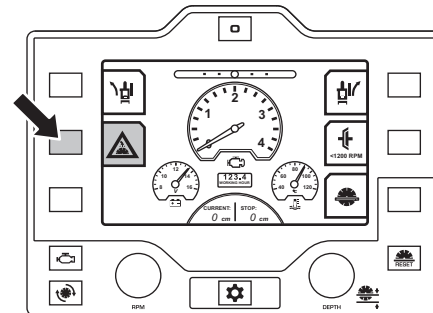
WARNING! Never use a blade with a lower speed rating than that of the machine. Make sure the blade is properly installed.

NOTICE! See chart for the appropriate blade shaft and engine speeds for specific blade sizes in the display.

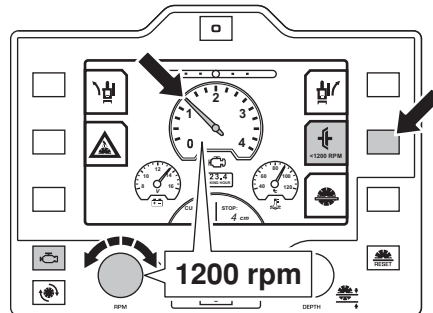
- Make sure that the water is flowing on both sides on the blade guard by monitoring the water flow gages on the water block. Adjust the flow on each side with the leavers on the water block.



- Test for adequate water supply. Low water flow will cause damage to diamond blades. Engage the Water safety switch on the control panel and open the Water valve.

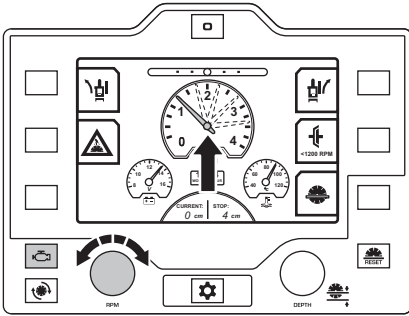


- Engage the Blade clutch (if equipped) to engage the blade drive. Only at 1200rpm or less.

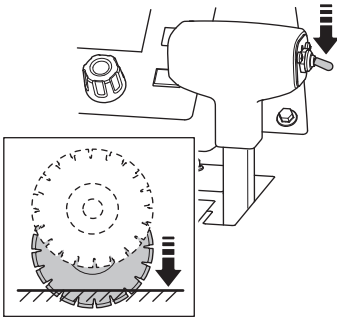


STARTING AND STOPPING

- Set the Engine throttle knob to maximum rpm.

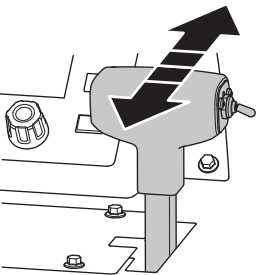


- When the front support wheels are set to correct depth, while trenching or cutting, the raise/lower switch shall be in low position for optimal traction and productivity.
- When lowering the blade, listen to the sound of the engine. If the engine starts to slow down, compensate by reducing the lowering speed.



CAUTION! When lowering the blade into a partial cut, align the blade exactly with the cut to prevent damage to the blade.

- Move the saw forward slowly by pushing on the Speed control lever. Listen to the sound of the engine. If the engine starts to slow down compensate by pulling Speed control lever backwards to decrease feeding and prevent stalling the blade. Make sure the front guide, rear guide and diamond blade stays on the line.



To adjust tracking, see the "Straight line sawing" section.

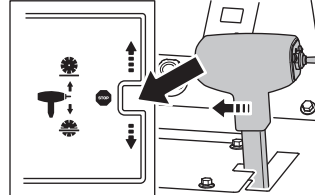
Stopping



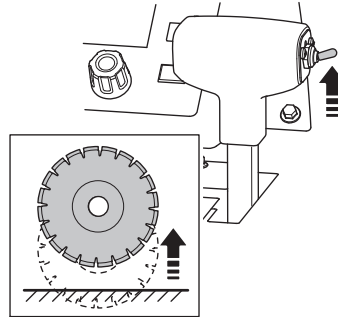
WARNING! Always keep all parts of your body away from blade and all other moving parts.

Stop the cutting

- Put Speed control lever into the STOP position.

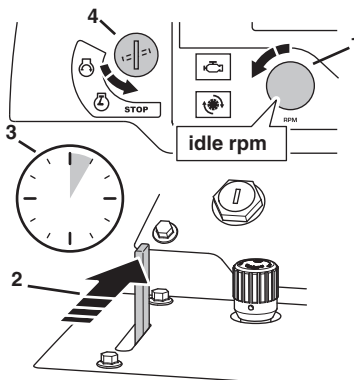


- Raise the diamond blade out of the cut by pressing the Raise/lower switch on the control lever upward until the diamond blade clears the surfaces.



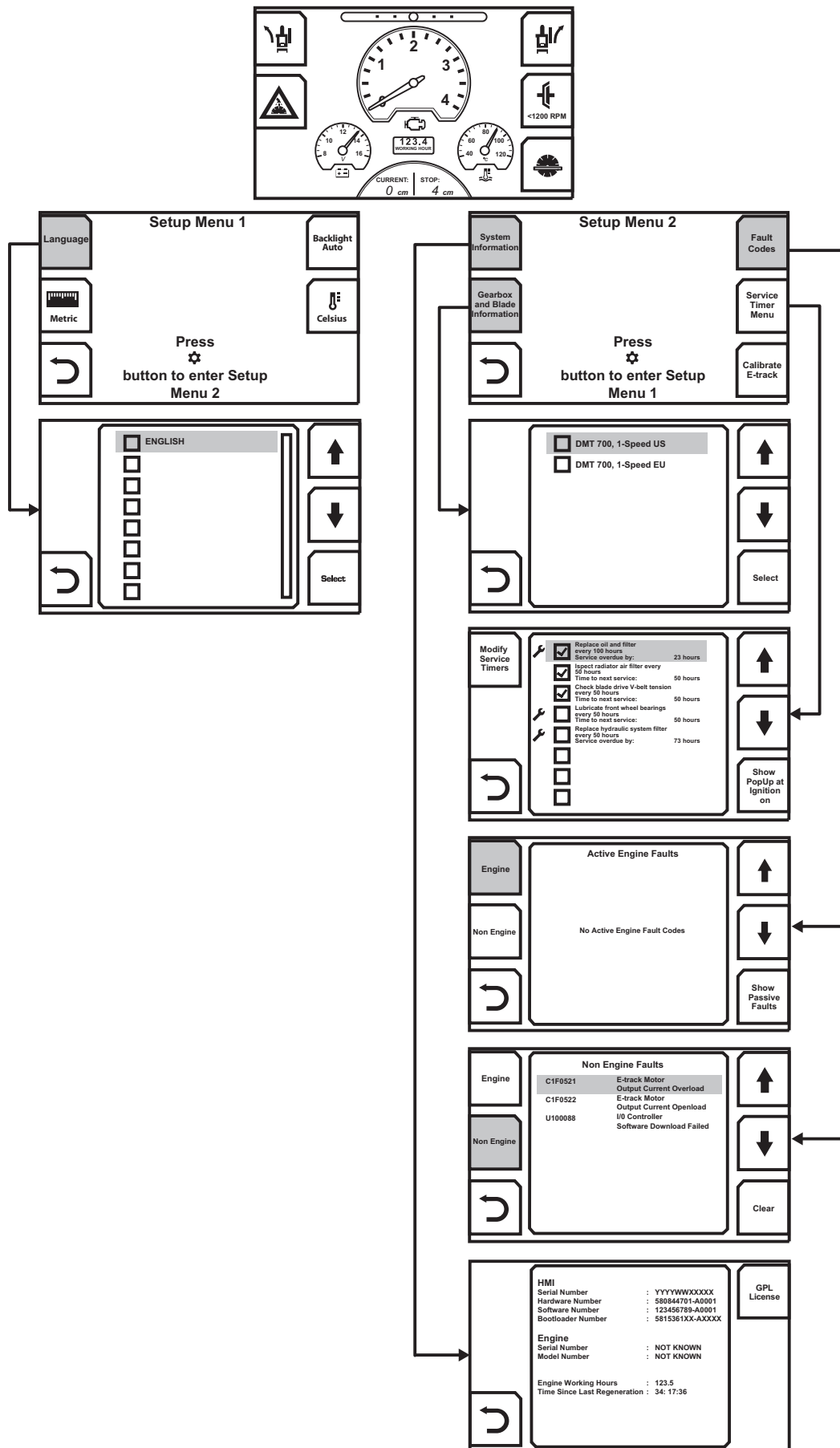
Stop the engine

- Turn the Engine throttle knob to the low idle position.
- Turn off the Water valve.
- Let the engine run at idle for a few minutes before shutting off.
- Stop the engine by turning the Engine start switch to the STOP position.



MENU SYSTEM

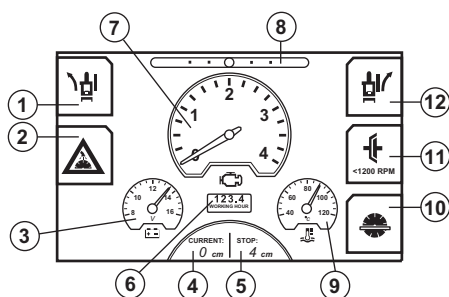
Menu overview



See following page for an explanation of each menu.

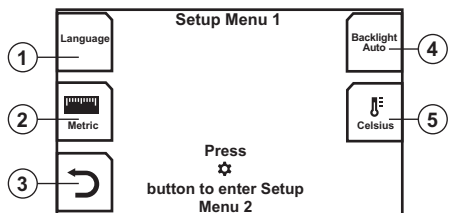
MENU SYSTEM

Menu system explanation



- 1 E-track, adjustment left
- 2 Water safety system
- 3 Battery voltage
- 4 Current blade depth
- 5 Blade depth stop setting
- 6 Run time will be displayed at start. While running, the engine load will be displayed in % where 100% is max.
- 7 Engine or blade speed
- 8 E-track, position
- 9 Engine temperature
- 10 Blade depth stop
- 11 Blade clutch
- 12 E-track, adjustment right

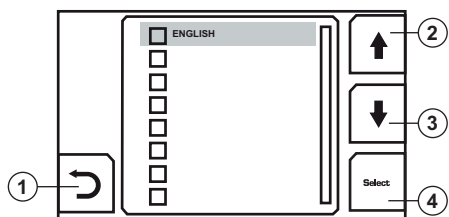
Setup Menu 1



- 1 Language
- 2 Distance unit. Switch between metric and imperial length units.
- 3 Return button (previous menu)
- 4 Backlight. Switch between three different levels of brightness and an auto setting. Auto is default.
- 5 Temperature unit. Switch between Celsius and Fahrenheit.

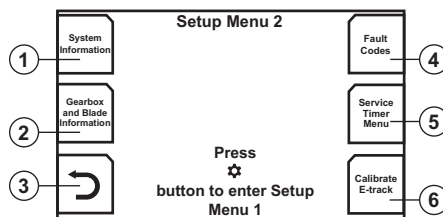
Languages

Select the required display language.



- 1 Return button (previous menu)
- 2 Browse to previous language
- 3 Browse to next language
- 4 Select button

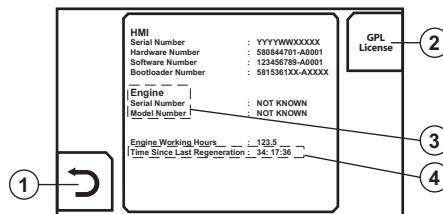
Setup Menu 2



- 1 System information
- 2 Gearbox and blade information
- 3 Return button (previous menu)
- 4 Fault codes
- 5 Service Timer Menu
- 6 Calibrate E-track. Present E track position becomes center position.

System information

Software related information.

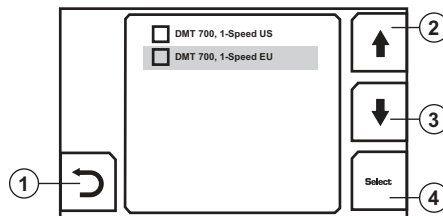


- 1 Return button (previous menu)
- 2 GPL license
- 3 Engine information.
- DMT 700 Software ID.

Gearbox and blade information

Shows the recommended rpm and gear for available blade sizes.

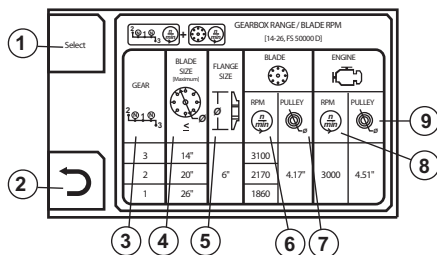
The tables are different depending on whether the machine is configured for 1-Speed or 3-Speed gearbox. Select your product model.



- 1 Return button (previous menu)
- 2 Browse to previous
- 3 Browse to next
- 4 Select button

MENU SYSTEM

Selected product's gearbox and blade information.



- 1 Select button
- 2 Return button (previous menu)
- 3 Gearbox range
- 4 Diamond blade diameter, mm/inch
- 5 Blade flange diameter, mm/inch
- 6 Rotational speed of diamond blade
- 7 Blade shaft pulley diameter, mm/inch
- 8 Maximum rotational speed of engine
- 9 Gearbox pulley diameter, mm/inch

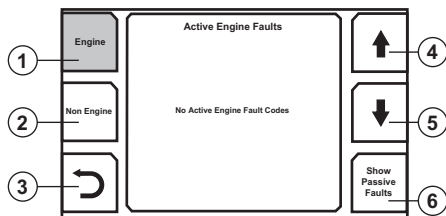
Fault codes

Shows fault codes when the machine detects a fault.

For more information, see the "Maintenance and service" section.

Engine

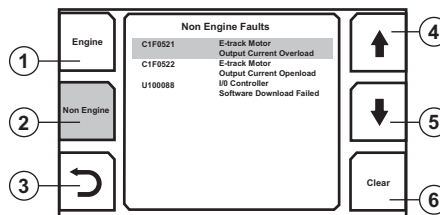
If there is no active or passive fault codes or if there is no contact between HMI and ECU (Engine control Unit) messages with this information will appear.



- 1 Fault codes, engine *
- 2 Fault codes, non engine-related
- 3 Return button (previous menu)
- 4 Browse to previous fault code
- 5 Browse to next fault code
- 6 Switch between active and passive engine fault codes.

* Please see the engine Operator's Manual for more information.

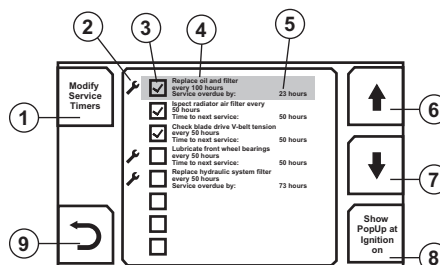
Non Engine



- 1 Fault codes, engine
- 2 Fault codes, non engine-related
- 3 Return button (previous menu)
- 4 Browse to previous fault code
- 5 Browse to next fault code
- 6 Clear rectified fault code

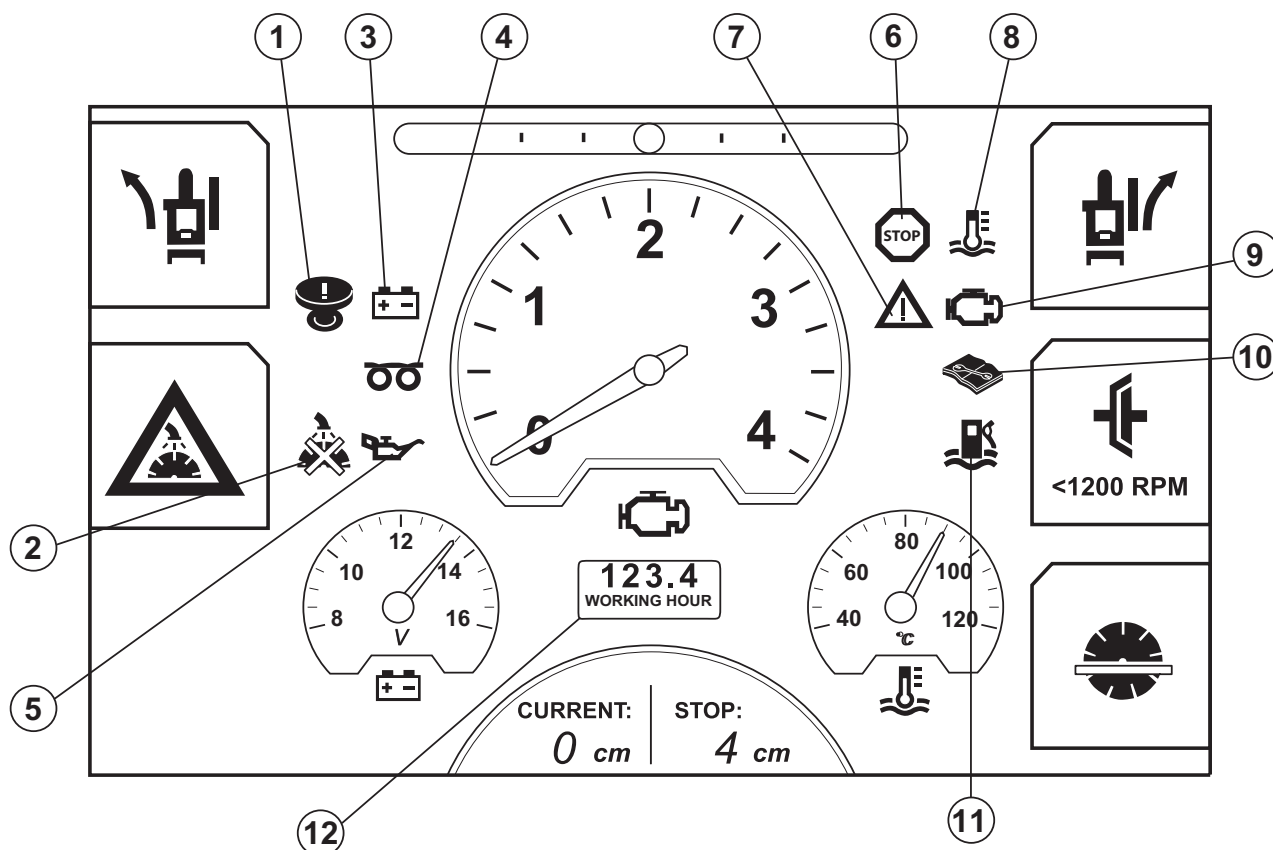
Service Timer Menu

Settings and information of the service schedule.



- 1 Button to the service mode and requires a PIN code.
- 2 Indication of service.
- 3 Indication of pop up message of service.
- 4 Type of service and how often it should be done.
- 5 The time when the next service is to be performed or the time that has passed since the service would have been carried out.
- 6 Browse to previous service message.
- 7 Browse to next service message.
- 8 Activation of pop up message for the service displayed when the ignition is switched on.
- 9 Return button (previous menu)

MENU SYSTEM



Explanation of the warning symbols on the display

- 1 **Machine in stop state** (release machine stop and cycle ignition to regain full functionality). Turned off when the following three conditions are met:
 - Engine start switch is turned off.
 - Engine speed received from ECU* equals 0 rpm for 1 second or more.
 - Blade speed is 0 rpm.
- 2 **No blade water pressure** Pressure switch is open (no water pressure) and blade water safety function is selected.
- 3 **No charging** Turned on when:
 - Ignition is on and engine stand still.
 - Battery voltage has not increased 15 seconds after engine start.
 - Battery voltage is below 12,8V.
 - Battery voltage is above 15V.

(Battery voltage is not checked while hydraulic pump is running or 15 seconds after the pump have stopped running as battery voltage always drop when pump is running.)
- 4 **Preheat** Please see the engine Operator's Manual for more information.
Deutz: Fault Code SO1 **
- 5 **Low oil pressure** Please see the engine Operator's Manual for more information.

Deutz: Fault Code SO1 **

Any ECU*, engine or floor saw: Fault Code SPN 100

- 6 **Engine stop.** Cutting can not continue. For more information, see the "Troubleshooting" section.
- 7 **Warning light.** Moderate engine problem/condition. Cutting can continue. For more information, see the "Troubleshooting" section.
- 8 **Engine over heated.** Cutting can not continue. Please see the engine Operator's Manual for more information.
Deutz: Fault Code SO1 **
- 9 **Engine fail lamp** always in combination with pos. 7 and 8. Please see the engine Operator's Manual for more information.
- 10 **Active fault codes.** Non engine related fault codes are active. For more information, see the "Troubleshooting" section.
- 11 **Water in fuel**
 - Deutz: Fault Code WFI For more information, see the "Maintenance and service" section.
- * Engine or Electronic Control Unit.
- ** HMI does not make any decision on its own. It only displays information coming from ECU*.
- 12 **Working hour** is only displayed with ignition on. This will change to **Engine load in %** when running the engine.

MAINTENANCE AND SERVICE

General



WARNING! Most accidents involving machines occur during trouble shooting, service and maintenance as staff have to locate themselves within the machine's risk area. Prevent accidents by being alert and by planning and preparing the work.

If servicing operations require the motor to be in operation, be aware of risks when working with or in the vicinity of moving parts.

Perform maintenance and servicing in accordance with this Operator's Manual to avoid shutdowns and to maintain the machine's value.

Maintain the machine's supplementary equipment and tools as well.

The user must only carry out the maintenance and service work described in this Operator's Manual. More extensive work must be carried out by an authorized service workshop.

Use only original spare parts for repairs.

Measures to take in advance of maintenance, service and trouble shooting

General

- Ensure that the machine is situated in a safe area.
- Always park the machine on a level surface with the engine OFF and the Engine start switch set in the STOP position before starting. Press the Machine stop on the control panel.
- Several components heat up during use of the machine. Do not commence any servicing or maintenance tasks until the machine has cooled.
- Set out clear signs to inform persons in the vicinity that maintenance work is in progress.
- Ensure that the working area is sufficiently illuminated to create a safe working environment.
- Ascertain the location of fire-extinguishers, medical supplies and emergency telephone.

Protective equipment

- Wear personal protective equipment. See instructions under the "Personal protective equipment" heading.

Working environment

- The area around the machine must be free of dirt in order to minimize the risk of slipping.

Cleaning



CAUTION! When cleaning the machine there is a risk of getting dirt and harmful substances in the eyes, for example.

Dirt and harmful substances can be released from the machine when using high pressure equipment.

High-pressure jetting using water or air can permeate into the skin and cause serious injury. Never aim a high-pressure jet towards the skin.

After each use clean the machine when cooled down.

Cleaning method

The cleaning method varies depending on type of contaminants and how dirty the machine is. A mild degreasing agent can be used. Avoid skin contact. Use high-pressure washers to clean the machine.

Cleaning of components

There are a number of components that require special consideration when cleaning.

NOTICE! Do not use high-pressure washers to clean the control panel. Make sure the cover for relay and fuse box is in place before washing.

Radiator

Allow the radiator to cool down before cleaning. Use compressed air to clean the air fins. If necessary, use high-pressure washing and degreasing agent. Incorrect use of high-pressure washing or compressed air can distort the cooler's fins and thereby impair the cooling capacity.

- Spray directly towards the radiator, in parallel with the fins.
- Keep a distance of at least 40 cm between the cooler and the nozzle.

Control panel

- Clean electrical components with a cloth or with compressed air. Do not spray water at electrical components. Dry the control panel with a damp cloth.

Engine

- Keep a distance of at least 40 cm between the nozzle and engine and its components. Do not spray too aggressively on the engine to prevent damage to electrical components like electrical plugs and alternator. Do not spray water directly in to the exhaust pipe or in engine air filter.

After washing

- Lubricate all the machine's lubrication points.
- Blow electrical terminals dry using compressed air.
- Let the machine dry thoroughly before start.
- Exercise caution when the machine is started after washing. If any components have been damaged due to moisture, the machine's movements can be defective.

MAINTENANCE AND SERVICE

Service schedule

The service schedule is based on the machine's operating time. More frequent service intervals might be necessary when working in dusty or hot environments and in conjunction with work that generates high temperatures. A description of how the operations are to be performed is to be found in the service review.

For certain service requirements, refer to the service intervals in the service schedule below and keep track on the next service. The machine will keep track on the working hours and it can be seen in the display.

- Always park the machine on a level surface with the engine OFF and the Engine start switch set in the STOP position before performing any maintenance. Press the Machine stop on the control panel.

Please read the engine manual for your machine carefully and make sure you understand the instructions before using the machine. There are some maintenance intervals specified in the engine manual.

In case where same services operation is recommended both in this machine's operator manual and in the engine operator manual, follow the schedule recommendations given in this manual.

Daily maintenance

Daily maintenance must also be carried out after transportation.

	Daily	Weekly	50h	100h	250h	500h	Yearly
Check radiator coolant level.	X						
Check the engine's oil level	X						
Check blade guard for damage	X						
Clean the inside of the blade guard.	X						
Check wear plate in blade guard and front slider	X						
Check hoses and clamps for damage or looseness. Tighten or replace as required.	X						
Check air cleaner restriction indicator. Clean outer air filter if indicator is red.	X						
Make sure all safety guards are in place and in good condition.	X						
Drain cooling water from gearbox to prevent rust and/or freeze damage.	X						
Check the water spray over the diamond blade.	X						
Drain fuel filter water separator from water	X						
Check blade drive V-belt tension (first time after 2 hours). Tension both side evenly. Do not over tension	X						
Lubricate front wheels		X					
Lubricate front axle pivot bearings		X					
Lubricate blade shaft (2 pumps each end)		X					
Lubricate hydraulic cylinder pivot pin.		X					
Lubricate rear axle bearing.		X					
Replace engine oil and filter*			X				
Check and clean radiator air filter or replace if necessary.			X				
Replace hydraulic system filter**			X				
Replace engine oil and filter*				X			
Check wheels for wear or damage.				X			
Check rear wheel hubs and wheels for looseness				X			
Check engine air cleaner hose and clamps				X			
Check hydraulic system fluid level				X			
Replace hydraulic system filter**					X		
Replace outer and inner air filter					X		
Replace engine gearbox fluid						X	
Replace hydraulic system fluid						X	
Flush and clean radiator and cooling system						X	
Replace engine fuel filter (spin-on-type)						X	
Check coolant freeze protection							X

* Once at 50h then every 100h

** Once at 50h then every 250h

MAINTENANCE AND SERVICE

Frequent maintenance



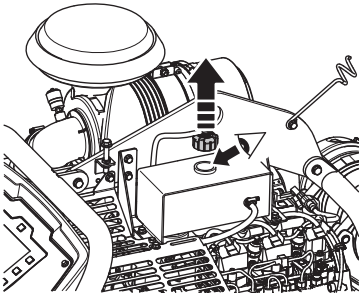
WARNING! Switch off the engine before carrying out any checks or maintenance.

Check radiator coolant level.



WARNING! Let the engine cool down before opening the radiator coolant lid.

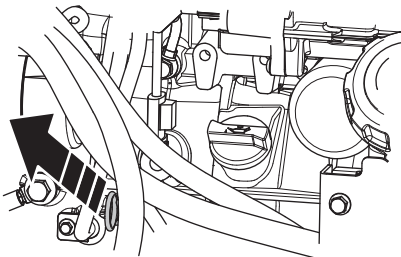
- Remove the lid and look down, the level should reach the start of the tube inside. Fill with coolant if needed.



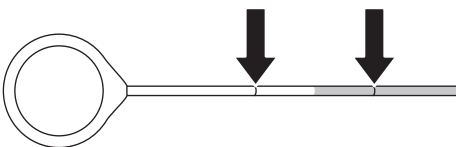
Check the engine's oil level

Check engine oil level without blade and the saw horizontal for a flat saw level.

- On the left side of the saw, check the engine oil level.

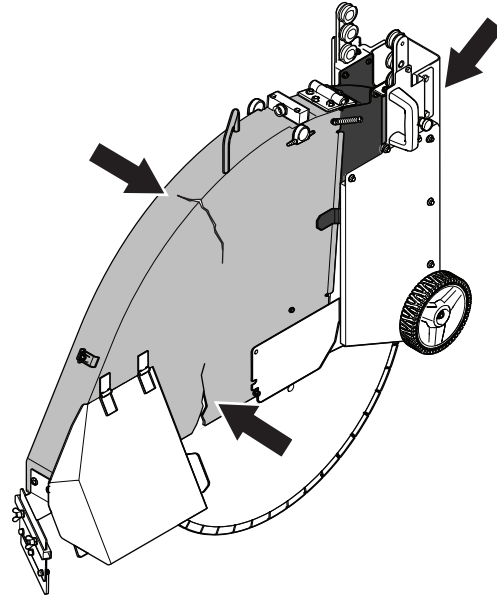


- Make sure the level is between the limits.

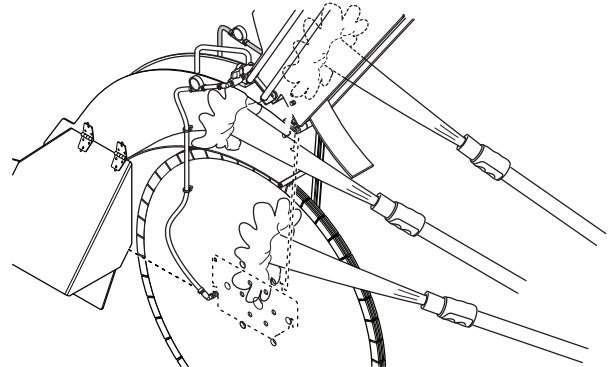


Check blade guard for damage

- Check the blade guard and the front slider protection for cracks. Never use a broken or damaged blade guard.

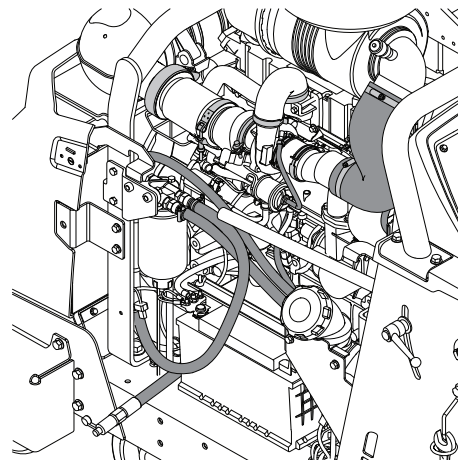


- Clean the inside of the blade guard. Inspect the wear plates.



Check all hoses and clamps for damage or looseness.

The image only shows some of the hoses and clamps.

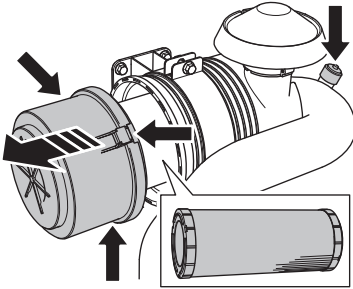


- Look for leakage on fuel, hydraulics and cooling system. Tighten or replace as necessary.

MAINTENANCE AND SERVICE

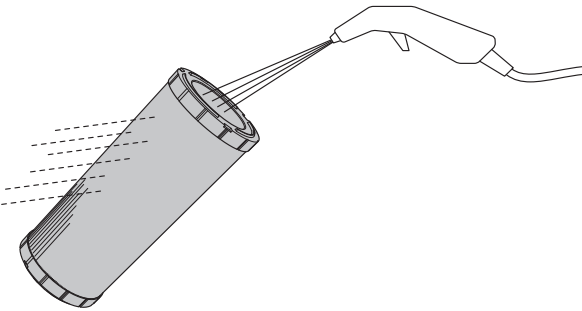
Check air cleaner restriction indicator.

- Check and clean the outer air filter if the air cleaner indicator is red, remove the rear cover by opening the 3 air filter housing clamps and pulling the housing off.



- Clean the filter by blowing the element from inside out. Use the lowest possible air pressure to remove the dust without damaging the element.

Use 0,29-0,49 MPa; 3,0-5,0 kgf/cm² (42-47 PSI) compressed air to remove particulates.



NOTICE! Do not exceed recommended air pressure. A higher air pressure will damage the air filter.

- Replace any damaged filters or gaskets and check air hose and clamps for damages or looseness. Tighten or replace as required.

NOTICE! No need to clean the inner filter on a daily basis. The 3 air filter housing clamps can not be closed unless the outer air filter is properly installed.

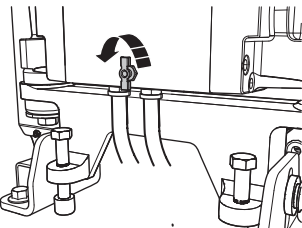
Protection covers

- Make sure all protection covers are in place and in good condition.

For more information, see the "Machine's safety equipment" section.

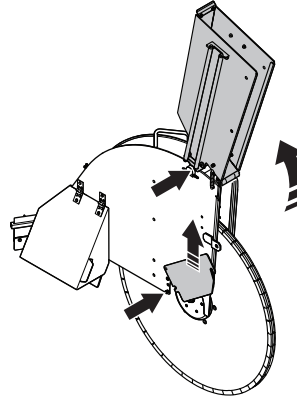
Drain cooling water from gearbox to prevent rust and/or freeze damage.

- To drain water from gearbox, turn the drain tap counterclockwise to open and clockwise to close.

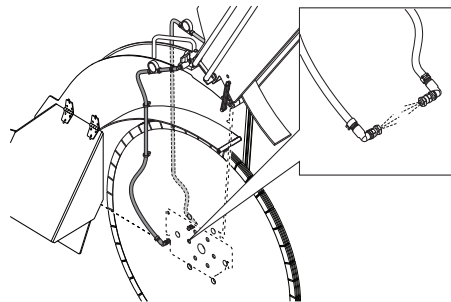


Check the water spray over the diamond blade.

- Raise blade guard front and use quick release pin to lock it in upright position.

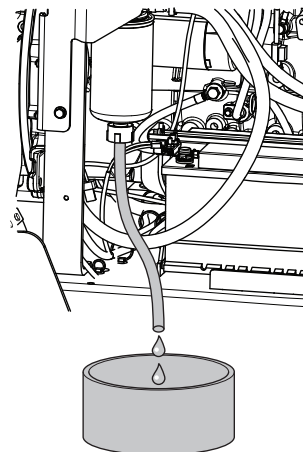


- Open the Water valve on the control panel. Start the water pump. Make sure it is straight jets of water from the two nozzles. If nozzles are blocked, remove the quick disconnect hose and clean hose and nozzles with compressed air.
- Replace nozzle or hose if damaged.



Drain fuel filter water separator from water

- Drain the fuel filter water separator by using the hose in the bottom. Put the hose in a bottle or a can, loosen the drain tap and drain any water collected inside the separator.



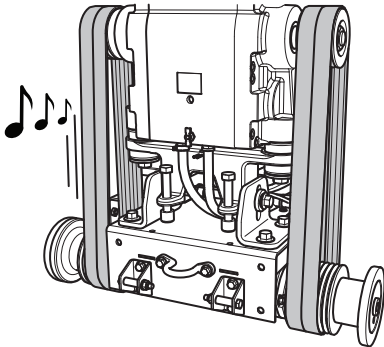
NOTICE! Treat this water as fuel and dispose properly.

MAINTENANCE AND SERVICE

Check drive V-belt tension.

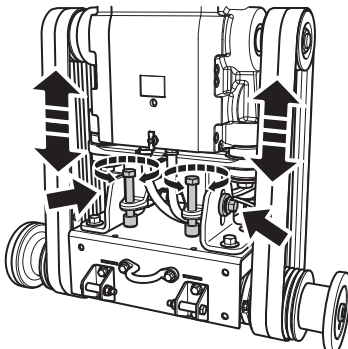
The V-belts are properly tensioned at the factory but after a few hours of operation they will stretch and become loose. Loose V-belts result in poor saw performance and short belt life.

- Check the blade drive V-belt tension by plucking the belt like a string. The belt should give a long tone rather than a dull sound.

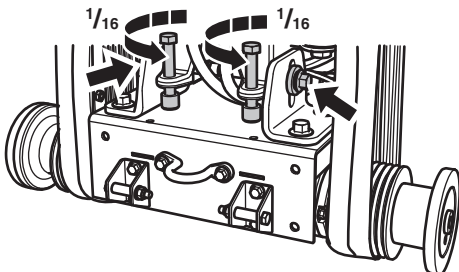


To tension the belts.

- Open the front cover. Loosen the two horizontal locking bolts with the blade shaft wrench, raise the gearbox and engine by using the belt tensioning bolts. Turn both of these bolts clockwise until V-belts are tight and check the belt by plucking it again.



- Fasten the two horizontal bolts again.
- Loosen the belt tensioning bolts counterclockwise approximately 1/16 of a turn.



CAUTION! Be sure to tension both sides evenly, do not over tension.

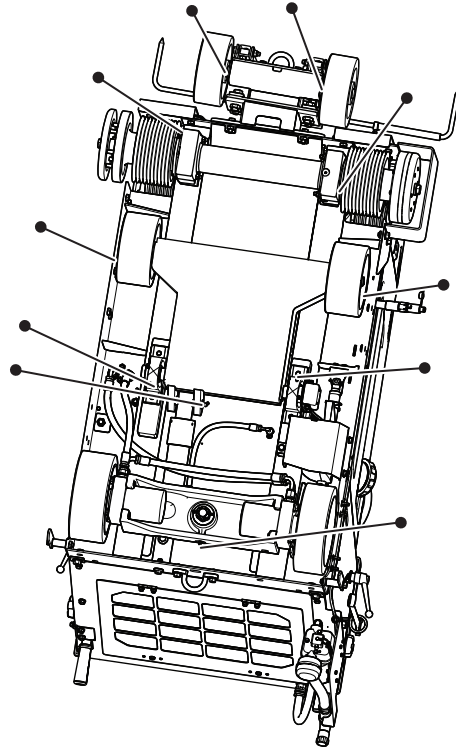
Replace V-belts in complete sets only. Always re-tension new belts after first 2-4 hours of use.

Weekly maintenance

Lubrication

The image shows all the lubrication points. Clean the nipple. Replace broken or blocked nipples.

- Lubricate front support wheels.
- Lubricate the front wheels.
- Lubricate the front axle pivot bearings.
- Lubricate the blade shaft. Two pumps at each end. Lubricate hydraulic cylinder pivot pin. Lubricate rear axle bearing.



After the first 50 hours

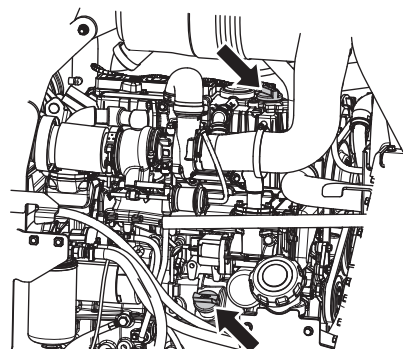
Replace engine oil and filter

- Remove the top cap from the hose. Open the valve and bend it down to empty the system.

Remove the filter and replace it.

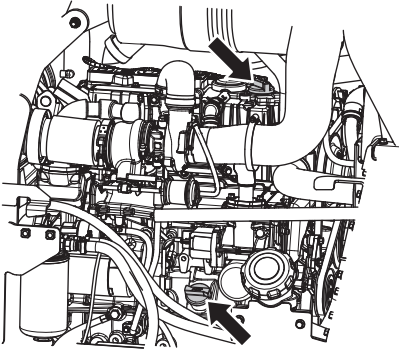
Lubricate the seal with a few drops of oil prior to refitting it.

NOTICE! Protect the battery from oil spill prior to removing and refitting.



MAINTENANCE AND SERVICE

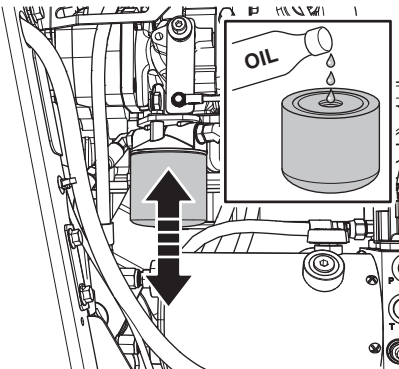
- Refill the system at either of 2 locations on the engine.



- Check the engine's oil level, see instructions under heading "Daily maintenance".

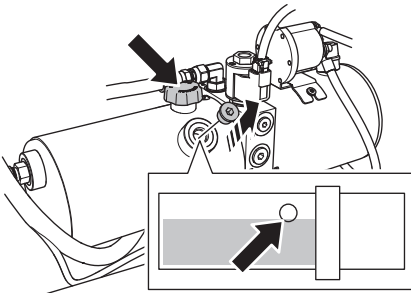
Replace the hydraulic system filter.

- Remove the hydraulic system filter. Fill the new filter with oil and lubricate the seal with a few drops of oil prior to refitting it.



- Refill the reservoir with new oil.

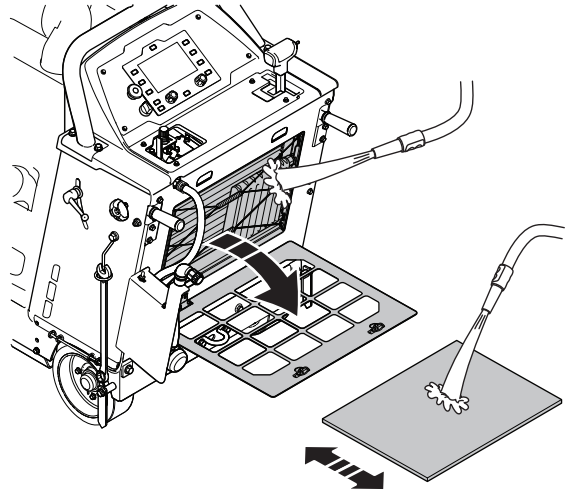
Ensure that machine is level prior refilling.



NOTICE! Do not overfill!

50 hours service

- Check and clean radiator air filter or replace if necessary.



CAUTION! Always keep the radiator air filter in place

100 hours service

Replace engine oil and filter

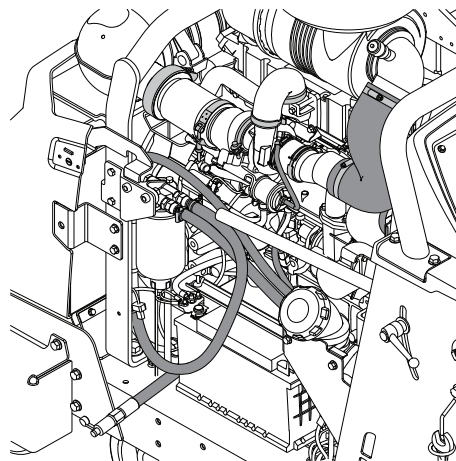
See instructions under the heading "After the first 50 hours"

Check wheels for wear or damage.

Check rear wheel hubs and wheels for looseness

Check engine air cleaner hose and clamps

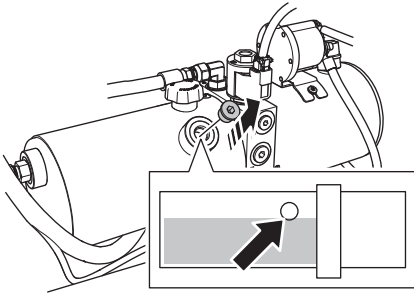
The image only shows some of the hoses and clamps.



MAINTENANCE AND SERVICE

Check hydraulic system fluid level

- Remove the plug in the inspection opening on the hydraulic reservoir. The level should be to the bottom edge of the opening on the hydraulic reservoir, fill if necessary.



NOTICE! Do not overfill!

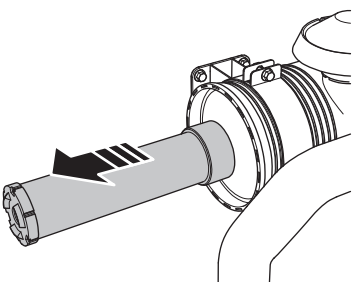
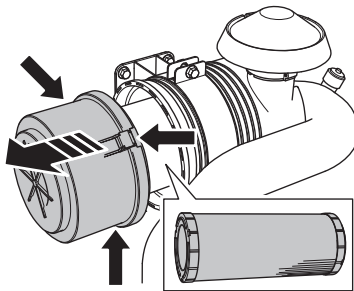
250 hours service

Replace the hydraulic system filter.

See instructions under the heading "After the first 50 hours"

Replace outer and inner air filter

- Remove the rear cover by opening the 3 air filter housing clamps and pulling the housing off. Replace both filters and refit them in reverse order.



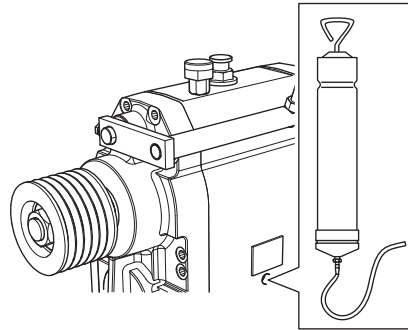
500 hours service

Replace engine gearbox fluid

Select one of the following options to drain gearbox fluid:

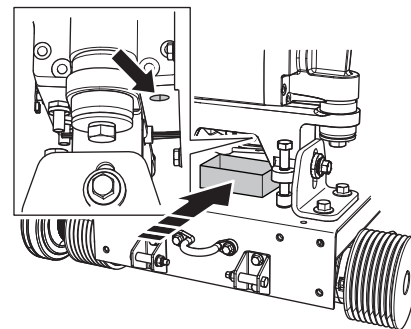
Option 1

- Open the window by removing the plug and suck the oil out with an oil extractor.

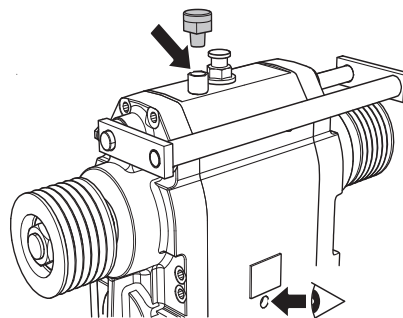


Option 2

- Slip a vessel under the bell housing of the engine. Loosen the screw and drain the oil. Once the system is empty, fasten the screw.



- Refill the system by removing the left screw and pour oil into the tube. Look in the window and fill until the correct level is reached.

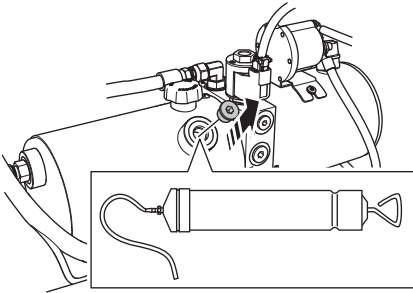


- Refit the screw and follow the steps in reverse order.

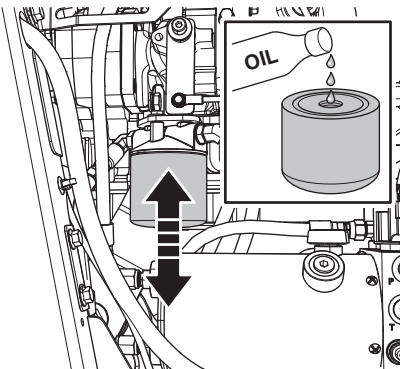
MAINTENANCE AND SERVICE

Replace hydraulic system fluid

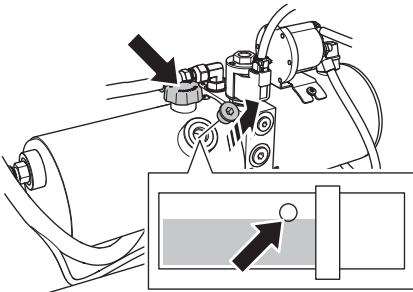
- Remove the plug in the inspection opening on the hydraulic reservoir and use an oil extractor to suck out the fluid through the inspection opening.



- Replace the hydraulic system filter. Fill the new filter with oil and lubricate the seal with a few drops of oil prior to refitting it.



- Refill the reservoir with new oil. Ensure that machine is level prior refilling.



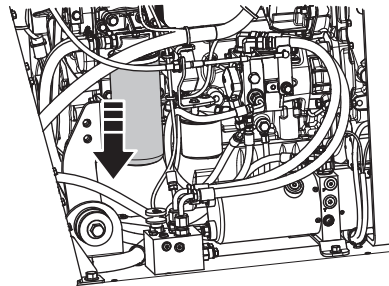
NOTICE! Do not overfill!

Replace engine fuel filter (spin-on-type)

NOTICE! Maintenance of the fuel filter should be done after the valve of the pre-filter is closed.

Make sure the valve is open before you start the engine (see engine manual)

- Remove the fuel filter by turning it counterclockwise. Replace the fuel filter. Beware of diesel that may spill. Fill the new filter with diesel and lubricate the seal with a few drops of diesel prior to refitting it.

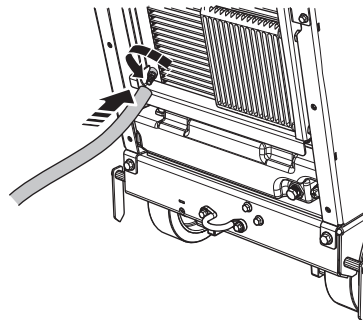


Flush and clean radiator and cooling system



CAUTION! Let the engine cool down before opening the radiator coolant lid.

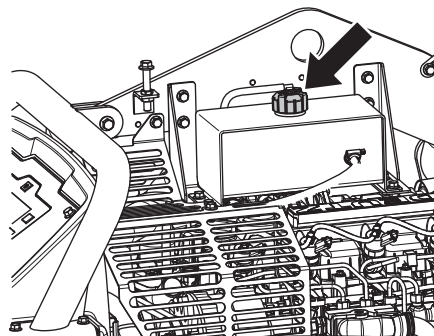
- Remove the back cover, put an extension on the valve and open the valve. Remove the lid on top and empty the system.



- Close the valve and refill the radiator coolant.

For more information, see the "Technical data" section.

Fill up until the coolant level is between the two marks on the radiator coolant overflow bottle when engine is cool.



The coolant level should reach the start of the tube inside.

Yearly maintenance

Check coolant freeze protection

Maintain 50/50 mixture of glycol and water. For more information, see the "Technical data" section.

TROUBLESHOOTING

Incidents during sawing

CAUTION! If the engine or blade stops for any reason, raise the blade completely from the cut. Set the Engine start switch to STOP position. Press the Machine stop on the control panel. Inspect the machine thoroughly before restarting the engine.

- Entrust all repairs to your authorized dealer only

Problem	Message on the display	Cause	Possible action
Engine stops during sawing	Warning symbol*	Engine out of fuel.	Refill with fuel
	Machine stop pressed: Restore machine stop and cycle ignition. Warning symbol*	The Machine stop has been pressed down	Reset the machine stop by pulling the knob outward.
		Excessively fast cutting will stall the engine	Listen to the sound of the engine. If the engine starts to slow down compensate by pulling Speed control lever backwards to decrease feeding and prevent stalling the blade.
		Circuit breaker fuse is blown	Inspect and replace fuses
The diamond blade stops during sawing		Drive belt tension is inadequate	Check the tension of the drive belt.
		The Blade clutch (if equipped) has been disengaged.	Engage the Blade clutch (if equipped) to engage the blade drive. Only at 1200rpm or less.
		The Blade clutch (if equipped) has an electrical failure or blown fuse.	Inspect and replace fuses
Saw lowers too fast		The valve that controls the saw lowering is open too much.	The lowering rate of the saw can be adjusted using the Saw lowering speed control knob at the control panel. If the saw lowers too quickly, turn the knob clockwise until an adequate lowering rate is set.
The blade cuts too slowly.		The blade has become dull or it is too high feeding pressure	Decrease the cutting depth and engine speed for a short time
The control unit reboots during cranking		The battery voltage is too low	Charge battery, change battery or use jump leads

* For more information about warning symbols, see section "Menu system".

TROUBLESHOOTING

Error messages

Fault Code	Message on the display	DTC description	Indication on the machine	Possible action
U100087	I/O Controller	No CAN communication	Engine can not be started. No machine function can be controlled.	Check damage to connectors X1, X4, X14 and chassis harness. If found, repair and restart system, reset fault code.
U100088	I/O Controller	Software download failed		If problem still exists, contact your service agent for further information.
P060745	IOC MPU	Program memory failure		Contact your service agent.
P060742	IOC MPU	General memory failure		Contact your service agent for further information.
C1F0612	Crank signal	Circuit short to battery	Engine can not be started.	Check damage to key switch, key switch connectors X30, X32 and harness. If found, repair and restart system, reset fault code.
C1E0111	Blade depth sensor signal	Circuit short to ground	Blade depth can not be displayed. Blade depth stop can not be used.	Disconnect sensor and reset fault code. If fault code no longer exists check sensor and sensor harness.
C1E0112	Blade depth sensor signal	Circuit short to battery		Check damage to X13 and X14 connectors and harness to sensors. If found, repair and restart system, reset fault codes. Contact your service agent for further information.
C1D0115	Starter	Circuit short to battery or open	Engine starter can not be controlled. Cutting can not continue.	Check damage to X14 and X1 connector and harness. If found, repair and restart system, reset fault code.
C1D0111	Starter	Circuit short to ground	Engine can not be started.	If problem still exists, contact your service agent for further information.
C1D0711	Power supply external device	Circuit short to ground	Cutting can not continue.	Check cables to: Blade depth sensor and sensor itself E-track position sensor and sensor itself Neutral start switch and switch itself Lower/raise switch and switch itself Water safety switch and switch itself
C1D0712	Power supply external device	Circuit short to battery	May not be able to read sensor values.	
C1D0815	AUX1	Circuit short to battery or open	AUX1 can not be controlled by the HMI.	Check K4 relay in relay/fuse box.
C1D0811	AUX1	Circuit short to ground		Check damage to X14 connector, harness to relay/fuse box and relay/fuse box connector. If found, repair and restart system, reset fault code. If problem still exists, contact your service agent for further information.
C1D0215	AUX2	Circuit short to battery or open	AUX2 (5th wheel) can not be controlled by the HMI.	Check K5 relay in relay/fuse box.
C1D0211	AUX2	Circuit short to ground		Check damage to X14 connector, harness to relay/fuse box and relay/fuse box connector. If found, repair and restart system, reset fault code. If problem still exists, contact your service agent for further information.
C1D0315	Blade clutch	Circuit short to battery or open	Blade clutch can not be controlled by the HMI. Blade might be engaged or disengaged the whole time.	Check K7 in relay/fuse box.

TROUBLESHOOTING

C1D0311	Blade clutch	Circuit short to ground		<p>Check damage to X14 connector, harness to relay/fuse box and relay/fuse box connector. If found, repair and restart system, reset fault code.</p> <p>If problem still exists, contact your service agent for further information.</p>
C1D0615	Water pump	Circuit short to battery or open	Water pump can not be controlled by the HMI. May not be able to turn on.	<p>Check K2 in relay/fuse box.</p>
C1D0611	Water pump	Circuit short to ground	Water pump can not be turned on.	<p>Check damage to X14 connector, harness to relay/fuse box and relay/fuse box connector. If found, repair and restart system, reset fault code.</p> <p>If problem still exists, contact your service agent for further information.</p>
C1D0915	Working light	Circuit short to battery or open	Working light can not be controlled by the HMI. May not be able to turn on.	<p>Check working light relay K3 in relay/fuse box.</p>
C1D0911	Working light	Circuit short to ground		<p>Check damage to X14 connector, harness to relay/fuse box and relay/fuse box connector. If found, repair and restart system, reset fault code.</p> <p>If problem still exists, contact your service agent for further information.</p>
C1D0C15	Ignition	Circuit short to battery or open	Engine can not be started.	<p>Deutz:</p>
C1D0C11	Ignition	Circuit short to ground		<p>Check damage to X14 and X1 connector and harness. If found, repair and restart system, reset fault code.</p> <p>If problem still exists, contact your service agent for further information.</p>
C1D0D15	Hydraulic lift pump	Circuit short to battery or open	Hydraulic lift pump can't be used for raising the blade.	<p>Check K6 in relay/fuse box.</p>
C1D0D11	Hydraulic lift pump	Circuit short to ground	Hydraulic lift pump can't be used for raising the blade.	<p>Check damage to X14 connector, harness to relay/fuse box and relay/fuse box connector. If found, repair and restart system, reset fault code.</p> <p>If problem still exists, contact your service agent for further information.</p>
C1D0E15	Hydraulic lowering valve	Circuit short to battery or open	Hydraulic lowering valve can't be used for lowering the blade.	<p>Check that hydraulic valve is properly connected.</p> <p>Check damage to X14 connector, harness and hydraulic valve. If found, repair and restart system, reset fault code.</p> <p>If problem still exists, contact your service agent for further information.</p>
C1D0E11	Hydraulic lowering valve	Circuit short to ground		<p>Check damage to X14 connector, harness and hydraulic valve. If found, repair and restart system, reset fault code.</p> <p>If problem still exists, contact your service agent for further information.</p>

TROUBLESHOOTING

C1E0511	E-track position sensor	Circuit short to ground	Cutting can continue but E-track position can not be detected until fault is resolved.	Check damage to actuator, connector and harness. If found, repair and restart system, reset fault code and recalibrate. If problem still exists, contact your service agent for further information.
C1E0512	E-track position sensor	Circuit short to battery		
C1F0112	E-track motor A	Circuit short to battery	Cutting can continue but E-track can not be used for drift compensation until fault is resolved.	Disconnect E-track and reset fault code. Press left and right E-track button in an attempt to control E-track. If fault code doesn't appear again check damage to E-track actuator, harness and connector. (Fault codes C1E0511 and C1E0512 may appear instead since E-track is not connected.) If fault code still exists check damage to cabling harness and connector. If found, repair and reset fault codes. If problem still exists, contact your service agent for further information.
C1F0111	E-track motor A	Circuit short to ground	Cutting can continue but E-track can not be used for drift compensation until fault is resolved.	Check if E-track is stuck or jammed, and if so, resolve the problem and reset fault codes. Try E-track again after 1 minute. If fault code still exists check contact your service agent for further information.
C1F0212	E-track motor B	Circuit short to battery		
C1F0211	E-track motor B	Circuit short to ground		
C1F0521	E-track motor	Output current overload		
C1F0513	E-track motor	Circuit open	Cutting can continue but E-track can not be used for drift compensation until fault is resolved.	Check connection between E-track harness to Cowling harness. Check connection between E-track actuator and E-track harness. Check damage to E-track and harness. If found repair and reset fault codes. If problem still exists, contact your service agent for further information.
U100187	Engine ECU	No CAN communication	Cutting can not continue. No information available from ECU.	Check damage to connectors X1, X4, X14 and harness. If found, repair and restart system, reset fault code. If problem still exists, contact your service agent for further information.

TECHNICAL DATA

Battery

	DMT 700
Terminal type	Standard SAE
Voltage, V	12
CCA, A	700
Maximum size (LxWxH), mm/ inch	316x175x190 / 12-7/16x6-7/8x7-1/2

Hydraulic fluid and lubricants

Hydraulic fluid

Quality	Standard
SAE 15W40	API Class SE
	API Class CC
	API class CD

Lubricants

Component	Model	Quality	Standard	Oil tank capacity, litre/qt
Engine oil (low ash oil only)	DMT 700	SAE 15W40 or SAE 10W30	API CJ-4	8.5/9.0
			ACEA E6-08	
			ACEA E9-08	
Gearbox oil	1-Speed gearbox model	SAE 75W90		0.95/1.0
Lubrication points (baseplate)*		NLGI 2	SAE J310	

* See instructions in section "Maintenance and service".

Coolant fluid

Ethylene glycol and water, 50/50 mixture (coolant at delivery)
Propylene glycol and water, 50/50 mixture



CAUTION! Do not mix directly into the machine's tank, it is difficult to determine when it's 50/50 mixture. Mix 50/50 for best cooling performance and corrosion protection of the engine.

TECHNICAL DATA

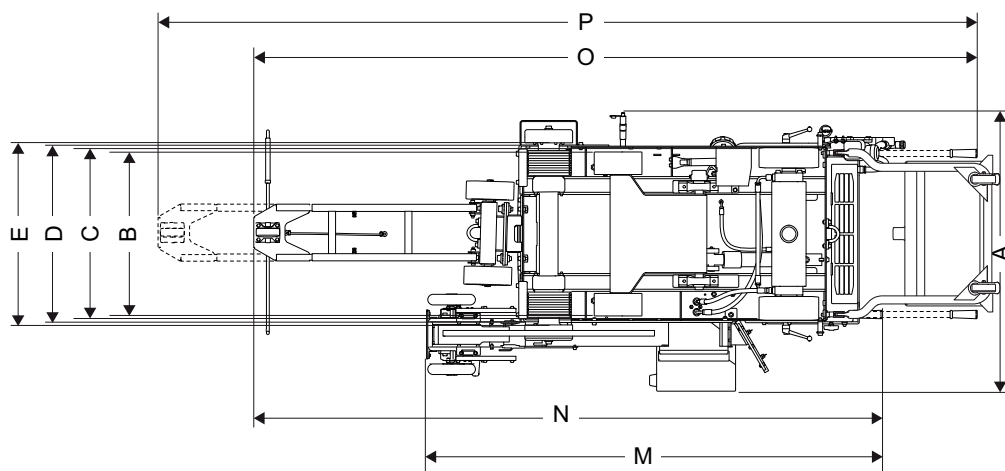
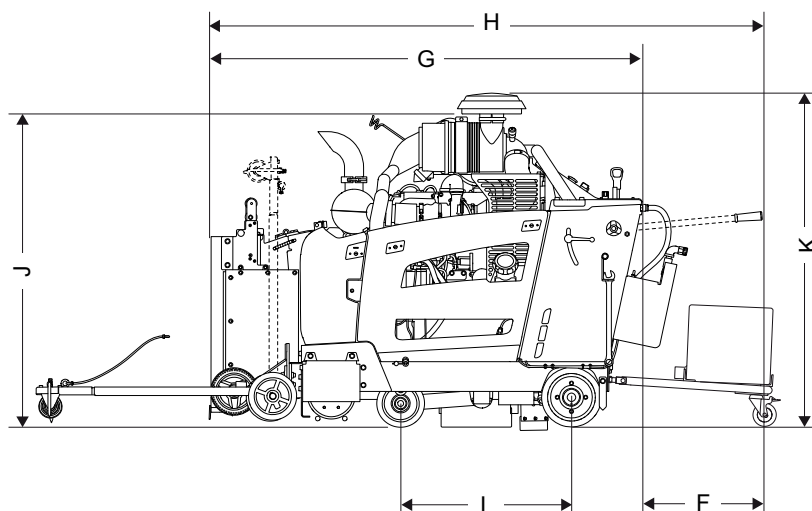
Technical data

Saw feature	900/36
Blade guard capacity, mm/inch	900/36
Maximum cutting depth, mm/inch	355/14
Max. bladeshaft rpm	1150
Approximate blade shaft output, hp/kW	68/50
Arbor size, mm/inch	35/1.38 with 6 Drive pins
Quick disconnect blade flange Ø, mm/inch	203.2/8
Blade shaft diameter, mm/inch	57/2.25
Blade shaft bearings	Cast sealed blade shaft with 4 maintenance-free ball bearings
Blade shaft drive	Dual 4-rib banded 3VX V-belts per side (16 ribs total)
Blade coolant	Zinc-plated dual nozzles
Blade guard attachment	Bolt on
Blade control	Electro-hydraulic pump raises blade; Switch controlled raise/lower on speed control handle; Depth stop and cutting depth indicator.
Axle Ø, mm/inch	Front, 25.4/1
	Rear, easy adjust center pivot with 2 hydraulic powered wheel motors
Wheels, mm/inch	Front, 203x76x25/8x3x1, thick polyurethane tread, sealed ball bearing requiring less maintenance
	Rear, 254x76x32/10x3x1.25, solid rubber, quick disconnect
Transmission	Hydrostatic pump, with 2 hydraulic wheel motors connected with hoses, neutral start switch, single handle speed control, hydraulic bypass valve for pushing
Max. ground speed	Infinitely variable: 0-250 fpm / 0-76m/min forward and reverse. 25m/min maximum reverse speed on CE models.
Chassis	Heavy duty, rigid, box and channel section construction
Weight (uncrated), kg/lb	1150/2535
Maximum operating mass, kg/lb	1300/2866

TECHNICAL DATA

Saw dimensions

A	Width, mm/inch		1240 / 48 13/16	H	Saw length (pointer up, handles extended), mm/inch	2845 / 112 1/64
B	Center to center wheel width, mm/inch	Front	604 / 23 3/4	J	Min. overall height (no exhaust pipe, no pre-cleaner cap), mm/inch	1319 / 51 7/8
		Rear	646 / 25 3/8	K	Max. overall height (top of pre-cleaner), mm/inch	1499 / 59
C	Outside to outside wheel width, mm/inch	Front	680 / 26 3/4	L	Wheel base length, mm/inch	727 / 28.6
		Rear	722 / 28 3/8	M	Guard to handle length (handles in), mm/inch	1980 / 77 61/64
D	Frame width, mm/inch		750 / 29 1/2	N	Max. overall length (handles in), mm/inch	2680 / 105.5
E	Inner flange to inner flange width, mm/inch		826,5 / 32.5	O	Max. overall length (handles extended, pointer down), mm/inch	3370 / 132 43/64
F	Handle extension, mm/inch		809 / 31 7/8	P	Max. overall length (handles extended, pointer extended), mm/inch	3850 / 151 37/64
G	Min. saw length (handles removed, pointer and guard up), mm/inch		2036 / 80 5/32			



TECHNICAL DATA

Engine

Engine specifications	Deutz, TD 2.9 L4
Max. engine output (see note 1)	74.3hp@2600rpm (55.4kW@2600rpm)
Displacement, dm ³ / cu.in.	2.92 / 178
Cylinders	4
Bore/stroke, mm/inch	92/110 3.6/4.3
Fuel tank capacity, l / gallon	40 / 10.6
Air filter	Radial seal with pre-cleaner and restriction indicator
Starter	Electric

For further information and questions about this specific engine please see, www.deutz.com

Note 1: As specified by engine manufacturer. The power rating of the engines indicated is the average net power output (at specified rpm) of a typical production engine for the engine model measured to ISO3046. Mass production engines may differ from this value. Actual power output for the engine installed in the final machine will depend on the operating speed, environmental conditions and other variables.

Noise emissions

	DMT 700
Noise emissions (see note 1)	
Sound power level, measured dB(A)	115
Sound power level, guaranteed L _{WA} dB(A)	119
Sound levels (see note 2)	
Sound pressure level at the operators ear, dB(A)	101
Vibration levels, a_{hv} (see note 3)	
Handle right, m/s ²	<2.5
Handle left, m/s ²	<2.5

Note 1: Noise emissions in the environment measured as sound power (L_{WA}) in conformity with EC directive 2000/14/EC. The difference between guaranteed and measured sound power is that the guaranteed sound power also includes dispersion in the measurement result and the variations between different machines of the same model according to Directive 2000/14/EC.

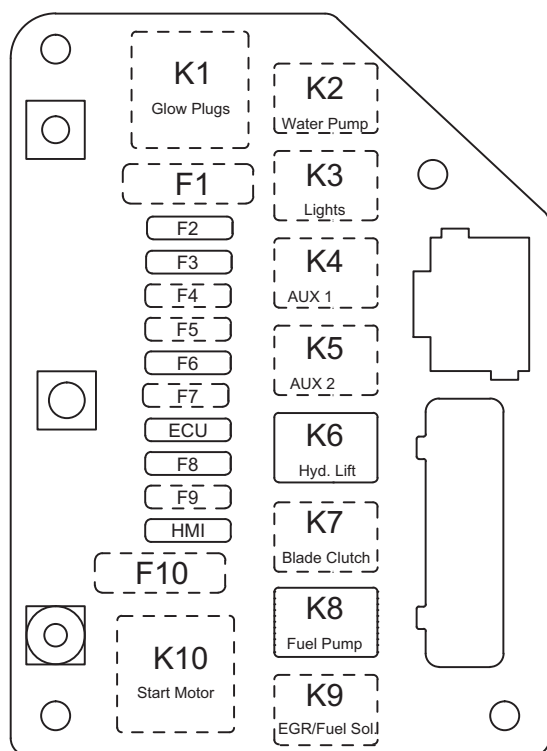
Note 2: Noise pressure level according to EN 13862. Reported data for noise pressure level has a typical statistical dispersion (standard deviation) of 1.0 dB(A).

Note 3: Vibration level according to EN 13862. Reported data for vibration level has a typical statistical dispersion (standard deviation) of 1 m/s².

RELAYS AND FUSES

Relays and fuses -DMT 700

Function		Designation	Relay (amp)	Designation	Fuse (amp)
Glow plugs		K1	(not used)	F1	(not used)
Water pump	(optional)	K2	25	F2	25
Lights	(optional)	K3	25	F3	7,5
Aux 1	(optional)	K4	25	F4	25
Aux 2	(optional)	K5	25	F5	25
Hydraulic lift pump		K6	25	F6	25
Blade clutch	(optional)	K7	25	F7	15
Fuel pump		K8	25	F8	20
EGR/Fuel Sol.		K9	(not used)	F9	(not used)
Start motor		K10	(not used)	F10	(not used)
ECU		n/a	n/a	ECU	25
HMI		n/a	n/a	HMI	25



EC DECLARATION OF CONFORMITY

EC Declaration of Conformity

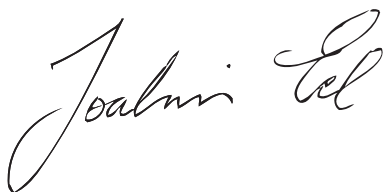
(Applies to Europe only)

Husqvarna AB, SE-561 82 Huskvarna, Sweden, tel +46-36-146500, declares under sole responsibility that the floor saw **Husqvarna DMT 700** from 2016's serial numbers and onwards (the year is clearly stated in plain text on the rating plate with subsequent serial number), complies with the requirements of the COUNCIL'S DIRECTIVES:

- of May 17, 2006 "relating to machinery" **2006/42/EC**.
- of February 26, 2014 "relating to electromagnetic compatibility" **2014/30/EU**.
- of May 8, 2000 "relating to the noise emissions in the environment" **2000/14/EC**.

The following standards have been applied: **EN ISO 12100:2010, EN 13309:2010, CISPR12:2007+Amd1:2009, EN13862+A1:2009**

Gothenburg 3 September 2015



Joakim Ed

Global R&D Director

Construction Equipment Husqvarna AB

(Authorized representative for Husqvarna AB and responsible for technical documentation.)

GB - Original instructions



1154738-26

2016-05-11