

SERVICE MANUAL BGS-250 MKIII

1x120V VERSION 1.0

Index

| | |
|--|-----------|
| Inspection comments | 03 |
| 1. Spare parts | 04 |
| Fig. 01 | 04 |
| Fig. 02 | 06 |
| Fig. 03 | 08 |
| 2. Electric schedules | |
| Electric circuit diagram 1x120V / 60Hz | 9 |
| Contact | |



Inspection comments

Inspection before initial operation on: _____

By: _____

Date of initial operation: _____

Serial number & Year of manufacture: _____

Recurring inspections / maintenance log

| Date / hour counter | Findings | Repairs / Cleaning | Test on | By* |
|---------------------|----------|--------------------|------------|-----|
| | | | | |

*competent person

Fig. 01

| Item | Part number | Description | Remarks | Qty. |
|------|-------------|-----------------------------------|---------|------|
| 1 | E14418 | 1.1kW Motor with gearbox | | 1 |
| 2 | - | M8 nut | | 4 |
| 3 | - | M14x30 Hexagon bolt | | 2 |
| 4 | - | M14x40 Hexagon bolt | | 2 |
| 5 | E14451 | Adapterplate with handle | | 1 |
| 6 | - | M8x25 Countersunk head screw | | 4 |
| 7 | - | M10 Locking nut | | 3 |
| 8 | - | M10 Washer | | 6 |
| 9 | E10177 | Coupling | | 1 |
| 10 | - | M10x30 Countersunk head screw | | 1 |
| 11 | E10181 | Coupling washer | | 1 |
| 12 | - | M10x45 Hexagon Bolt | | 3 |
| 13 | 000118-2S | Flexible coupling | | 1 |
| 14 | - | M10x40 Hexagon bolt | | 3 |
| 15 | E03250 | Spacer ring | | 3 |
| 16 | DG05-1 | Adapter diamond disc | | 1 |
| 17 | - | M8x12 Hexagon sockethead | | 4 |
| 18 | E11157 | Upper dust hood | | 1 |
| 19 | BE0681 | M6x16 Hex socket buttonhead screw | | 3 |
| 20 | - | M6 spring lock washer | | 3 |
| 21 | - | Nylon washer | | 3 |
| 22 | E11157 | Lower dust hood | | 1 |
| 23 | BE0099 | M12x20 | | 4 |

Fig. 02

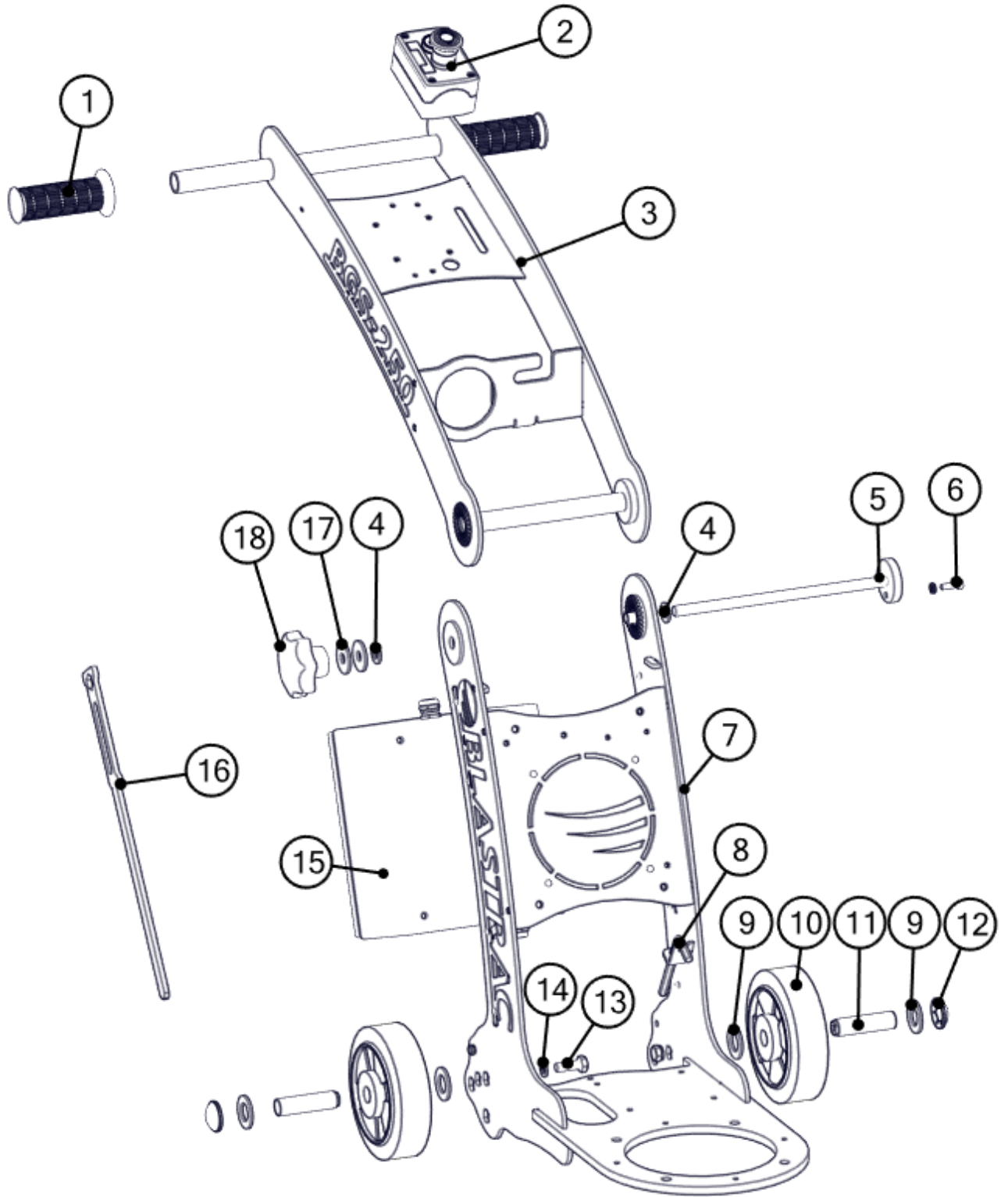


Fig. 02

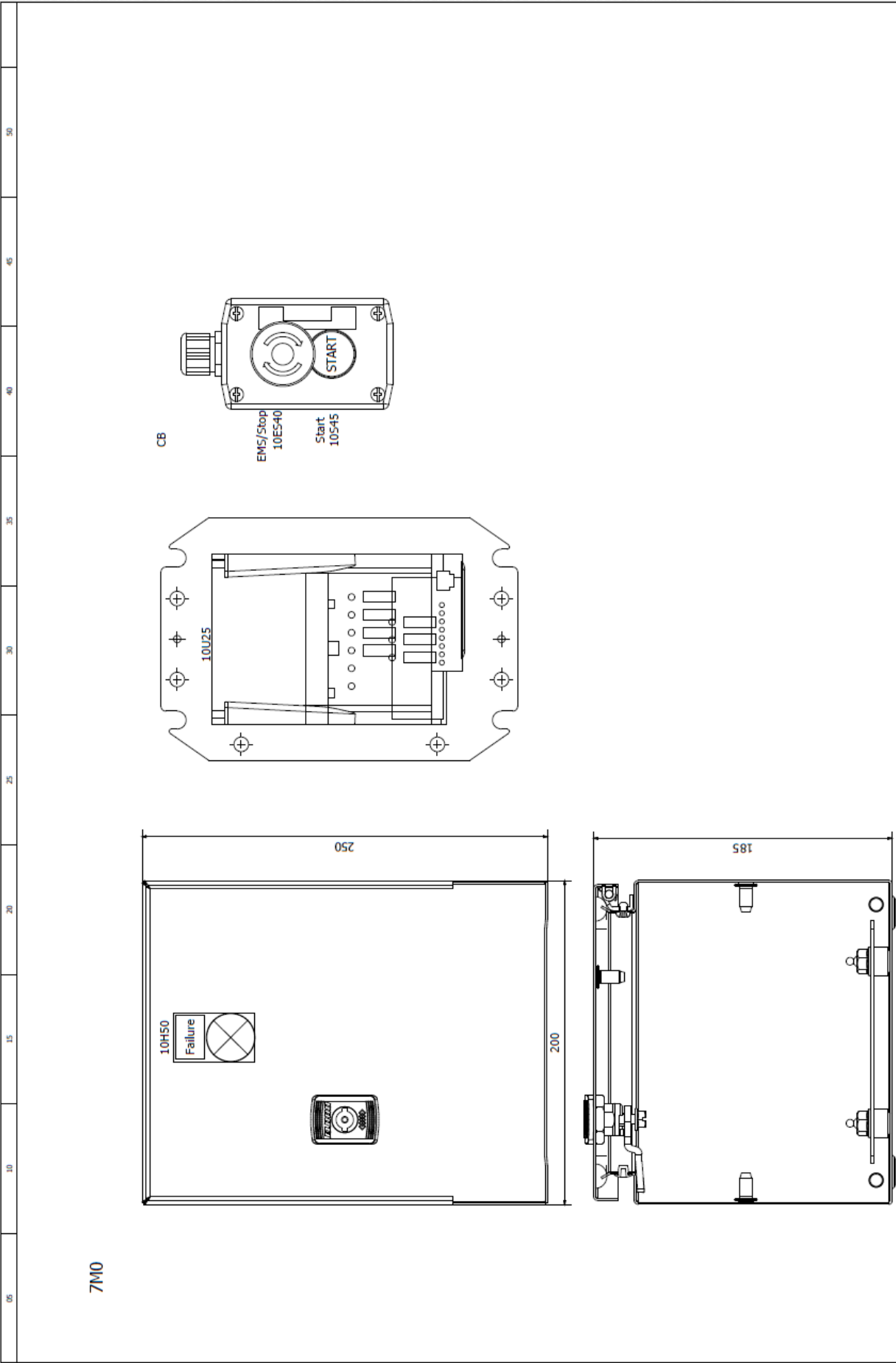
| Item | Part number | Description | Remarks | Qty. |
|------|-------------|---------------------------------|------------|------|
| 1 | 453290 | Handle grip | | 2 |
| 2 | E17359 | Control box for BGS-250 1x120V | | 1 |
| 3 | E15467 | BGS-250 Handle | | 1 |
| 4 | BE0026 | M12 Washer | DIN 125-1A | 2 |
| 5 | E13656 | Axle | | 1 |
| 6 | - | M6x20 Hexagon sockethead cap | | 1 |
| 7 | E15466 | BGS-250 NA frame | | 1 |
| 8 | E10672 | Allen key no.8 | | 1 |
| 9 | - | M20 Washer | | 4 |
| 10 | E03603 | Wheel | | 2 |
| 11 | E11128 | Wheel shaft | | 2 |
| 12 | BE0097 | Starlock ring | | 2 |
| 13 | - | M10x30 Bolt | DIN 933 | 2 |
| 14 | - | M10 Spring lock washer | DIN 127 B | 2 |
| 15 | E17359 | Electric box for BGS-250 1x120V | | 1 |
| 16 | E11162 | Banning tool | | 1 |
| 17 | - | M12 Washer | | 2 |
| 18 | BE1095 | Knob M12 | | 1 |
| | | | | |
| | | | | |
| | | | | |
| | | | | |



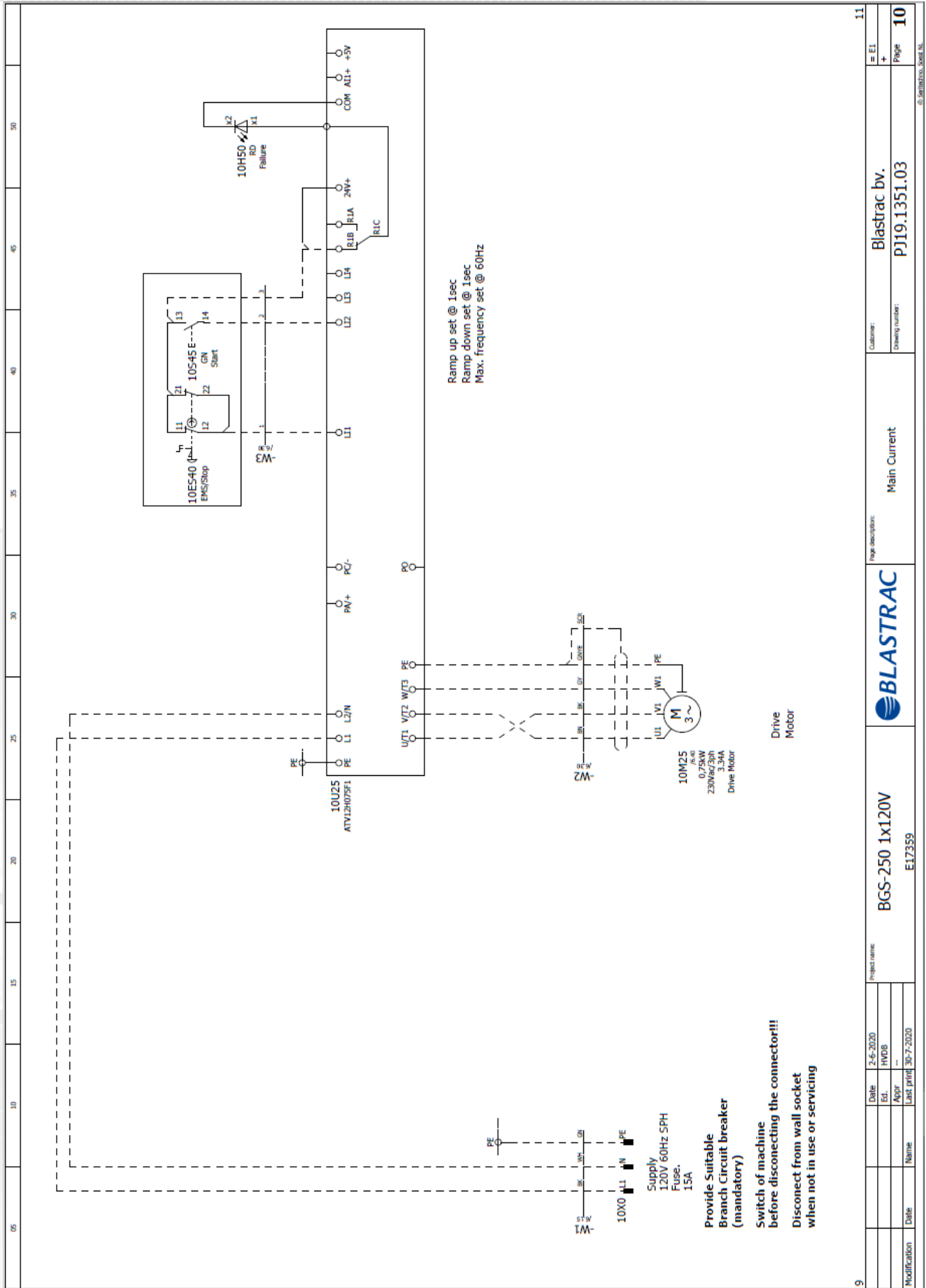
| | | | | | | | | | |
|--|----|----|----|----|----|----|----|----|----|
| 05 | 10 | 15 | 20 | 25 | 30 | 35 | 40 | 45 | 50 |
| <p>WIRE COLOR All wiring AWG</p> <p>Main Voltage 120V sph</p> <p><u>Phase</u></p> <p>L1</p> <p>L2</p> <p>L3</p> <p>Earth / PE</p> <p><u>Colors</u></p> <p>- Black</p> <p>- Black</p> <p>- Black</p> <p>- Yellow/Green</p> | | | | | | | | | |
| <p>SYMBOL CODE</p> <p>11 F 11</p> <p>_____ - Running number</p> <p>_____ - Symbol letter</p> <p>_____ - Schedule page</p> | | | | | | | | | |
| <p>CORE CODE</p> <p>11 11</p> <p>_____ - Running number</p> | | | | | | | | | |
| <p>DRAWING NUMBER</p> <p>PJ###.###.###.###</p> <p>_____ - Revision number</p> <p>_____ - Archive number</p> <p>_____ - Year</p> | | | | | | | | | |
| <p>Control Voltage</p> <p>Plus (24VDC) - Dark Blue</p> <p>Hook-up wire - Dark Blue</p> <p>Minus / Ground (24VDC) - White Blue</p> | | | | | | | | | |
| <p>BLASTRAC</p> | | | | | | | | | |
| <p>BGS-250 1x120V</p> <p>E17359</p> | | | | | | | | | |
| <p>Legend</p> | | | | | | | | | |
| <p>Customer: Blastrac bv.</p> <p>Drawing number: PJ19.1351.03</p> | | | | | | | | | |
| <p>Page description:</p> | | | | | | | | | |
| <p>5</p> | | | | | | | | | |
| <p>3</p> | | | | | | | | | |
| <p>Modification Date</p> <p>Name</p> <p>Date</p> <p>Ed. FVDB</p> <p>Appr. -</p> <p>Last print: 30-7-2020</p> <p>Date: 08-1-2020</p> <p>Project name: BGS-250 1x120V</p> | | | | | | | | | |
| <p>Page</p> <p>4</p> | | | | | | | | | |
| <p>© 2019 BLASTRAC, S.A.</p> | | | | | | | | | |

| 05 | 10 | 15 | 20 | 25 | 30 | 35 | 40 | 45 | 50 |
|----|------------------------------------|-------------------------------------|----|---|---------------------------|----|---|----|-----------------------------|
| | auxiliary contact | hulpcontact | | signal light | signaallamp | | Safety fuse | | smettelgeheid |
| | Power contact | vermogenscontact | | horn | hoorn | | Fused switch, three-pole | | schakelbare schakelaar |
| | NO contact, opens with time delay | maakcontact, vertraagd open | | amp.meter | ampere-meter | | Fused disconnect, three-pole | | schakelaar "klopak" |
| | NO contact, closes with time delay | maakcontact, vertraagd sluitend | | running hour counter | urenmeter | | Main switch | | hoofdschakelaar |
| | NC contact, opens with time delay | verbreekcontact, vertraagd open | | transformer | transformator | | Circuit breaker, single-pole | | instalatieautomaat 1-poolig |
| | NC contact, closes with time delay | verbreekcontact, vertraagd sluitend | | Contactor coil | spoel | | Circuit breaker, two-pole | | instalatieautomaat 2-poolig |
| | Pushbutton rebound | drukknop terugrend | | Contactor/relay coil, with pick-up delay | spoel met opkomvertraging | | Circuit breaker, three-pole | | instalatieautomaat 3-poolig |
| | Pushbutton locking | drukknop blijvend | | Contactor/relay coil, with drop-out delay | spoel met afvalvertraging | | Power circuit breaker motor overload switch with switch mechanism | | motorbeveiligingsschakelaar |
| | Rotary switch rebound | tip draaischakelaar | | Contactor pulse coil | spoel puls | | Valve | | elektrisch bediende klep |
| | Rotary switch locking | draaischakelaar | | Tube light | TL verlichting | | Resistor with movable contact | | regelbare weerstand |
| | Emergency stop rotary unlock | noodstop met draibare vrijgave | | Resistor / Heating | weerstand verwarming | | Terminal | | rijgklem |
| | Thermostatic switch | thermostaat hygrostaat | | Socket | wandcontactdoos | | Terminal with fuse | | rijgklem met zekering |
| | Pressure switch | drukschakelaar | | Current transformer | stroombandtransformator | | Rectifier | | geijkrichter |
| | Limit switch | eindschakelaar | | | | | | | |
| | Proximity switch | naderingsschakelaar | | | | | | | |

| | | | | | | | | | | |
|---|------------|------------|--------------|----------------|------------------|----------|-----------------|--------------|------|---|
| 4 | Date | 18-12-2019 | Project name | BGS-250 1x120V | Page description | BLASTRAC | Customer | Blastrac bv. | Page | 5 |
| | Ed. | FVDB | | E17359 | Symbol library | | Drawing number: | PJ19.1351.03 | | |
| | Appr | | | | | | | | | |
| | Last print | 30-7-2020 | | | | | | | | |



| | | | | | | | | | |
|------------------|--|----------------|------|------|-----------|-----------|-----------|--------------|--|
| Modification | | Date | Name | Date | 29-7-2020 | 30-7-2020 | 30-7-2020 | 30-7-2020 | |
| Project name | | BGS-250 1x120V | | | | | | E17359 | |
| Page description | | Control box | | | | | | Control box | |
| Customer | | Blastrac bv. | | | | | | Blastrac bv. | |
| Drawing number | | PJ19.1351.03 | | | | | | PJ19.1351.03 | |
| Page | | 8 | | | | | | 8 | |





Parts list

| device tag | Quantity | designation | Type number | Brand | Blastrac number |
|------------|----------|---|-----------------------|--------------------|-------------------|
| -CB | 1 | Empty control station - XAL-D - plastic - 2 opening | XAL-002 | Schnacker Electric | E17360 |
| -CB | 1 | Cable gland M16*1.5 polyamide 50.616 | WARTEL PA M16*1.5 | Jacob | E01196 |
| -CB | 1 | Cable gland nut M20*1.5 brass, nickel-plated | WARTELMOER M20*1.5 | Jacob | E00406_1 |
| -CB | 1 | Bedliner M20*1.5 Sect. M16*1.5 Sect. polyamide | REDUCTERING PA M20M16 | Geaclic | E17361 |
| -7M0 | 1 | Enclosure meshwork 250x200x185 IP66/PAL2035 | B575 ENCLOSURE | EMKO | E13321 |
| -7M0 | 2 | Hebu Cable IZ-602-CY / 4GL5.5 (AWG no. 16) | B2970 | Heubabel | E17362 |
| -7M0 | 8 | UL neopreen 3*AWG32 (4mm2) 600V. | AWG 12*3 | Card Cable | E13487 |
| -7M0 | 6 | Cabletag eye M5 L104..2.63 mm2 Blue | A-2553 R MONT.K.SN. | Calje | E07983 |
| -7M0 | 2 | Cable gland M20*1.5 8-13MM brass, nickel-plated | WARTEL M20*1.5 | Jacob | E00406 |
| -7M0 | 2 | Cable gland nut M20*1.5 brass, nickel-plated | WARTELMOER M20*1.5 | Jacob | E00406_1 |
| -7M0 | 1 | Cable gland nut M20 EMC/EMV brass, nickel-plated | JACO 50.220 POT | Jacob | E08268 |
| -7M0 | 1 | Cable gland M20 EMC/EMV brass, nickel-plated | JACO 50.620 M/EMV | Jacob | E08267 |
| -7M0 | 1 | Cable 18AWG IZ-602-5G1/UJ-C5A/ oil resistant | IZ-602-5G1 | Heubabel | E13488 |
| -10E540 | 1 | Red 040 Emergency stop pushbutton head 022 trigger and latch | ZBS-AS844 | Schnacker Electric | E01543 / B6001500 |
| -10E540 | 2 | Spring return contact block - 1 NC - rear box mounting | ZEN-L1121 | Schnacker Electric | E05131 |
| -10H50 | 1 | Rear complete pilot light 022 plain lens with integral LED 24 | XBS-ANB4 | Schnacker Electric | E05161 |
| -10H50 | 1 | Legend holder 30 x 50 mm for legend 18 x 27 mm unmarked | ZBZ-35 | Schnacker Electric | E05080 |
| -10S45 | 1 | Green flush pushbutton head 022 spring return "START" | ZBS-AA333 | Schnacker Electric | E01352 |
| -10S45 | 1 | Spring return contact block - 1 NO - rear box mounting | ZEN-L1111 | Schnacker Electric | E05130 |
| -10U25 | 1 | Frequency drive 0.75KW 120V earlfase Koellichiam | ATV12H075F1 | Schnacker Electric | E9351-1 |
| -10X0 | 1 | Plug 15A wiring devices | HBL5266C | Hubbel | E17363 |

10

| | | | | | | | | |
|------------|-----------|--------------|----------------|------------------|------------|----------|--------------|------|
| Date | 30-7-2020 | Project name | BGS-250 1x120V | Page description | Parts list | Customer | Blastrac bv. | ± EI |
| Ed. | HWDB | | E17359 | | | | PJ19.1351.03 | + |
| Appr | | | | | | | | Page |
| Last print | 30-7-2020 | | | | | | | 11 |

©.SERTINIKS. 2008 NL



BLASTRAC
WE'RE READY TO ASSIST YOU!

