

SERVICE MANUAL BMG-444

VERSION 1.0

Index

Index	2
1. Tools	3
2. Spare parts	4
Fig. 01 Frame complete	4
Fig. 02 Main Handle	6
Fig. 03 Grinding head	8
Fig. 04 Planetary system - Upper part.....	10
Fig. 05 Planetary system - Lower part.....	12
Fig. 06 Pulleys	13
Fig. 07 Tensioning block lower belt	14
Fig. 08 Buffer system	15
3. Electric schedules	17
E00587-2 1~230V / 50Hz.....	17
E00587-1/AU 1~230V / 50Hz	18
E03951-1 3~400V / 50Hz.....	19
E01532-1 1~110V / 50Hz.....	20
E17359 1~120V / 60Hz	21



1. Tools

The tools shown below are only a small selection of our complete portfolio. Check out our full range of grinding tools, adapter plates, hoses, hose connectors, bags, filters, cleaning sets, and much more at the [Diamag website!](http://WWW.DIAMAG.EU) WWW.DIAMAG.EU



E13673

Slidemag adapterplate Ø155

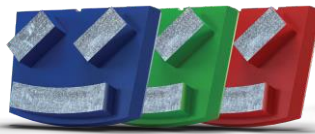


PREMIUM BLUE SLIDEMAG WING
BG720321 #18 - 20
BG720322 #30 - 40

PREMIUM GREEN SLIDEMAG WING
BG720311 #18 - 20
BG720312 #30 - 40
BG720313 #60 - 80
BG720314 #120 - 150

PREMIUM RED SLIDEMAG WING
BG720301 #18 - 20
BG720302 #30 - 40
BG720303 #60 - 80
BG720304 #120 - 150

PREMIUM BLACK SLIDEMAG WING
BG720341-2 #30 - 40



TRIOLOGY BLUE SLIDEMAG WING
BG719321 #18 - 20
BG719322 #30 - 40

TRIOLOGY GREEN SLIDEMAG WING
BG719311 #18 - 20
BG719312 #30 - 40
BG719313 #60 - 80
BG719314 #120 - 150

TRIOLOGY RED SLIDEMAG WING
BG719301 #18 - 20
BG719302 #30 - 40
BG719303 #60 - 80
BG719304 #120 - 150



PCD GOLD SLIDEMAG WING
BG720PCD-2Q1S 2x1/4 PCD+S
BG720PCDG-2Q1GS 2x1/4PCD +1xG
BG720PCD-2SPLIT SPLIT WING



SLIDEMAG VELCRO SYSTEM
E19001 VELCRO SLIDE WING
E19011 FOAM WITH VELCRO Ø155x20mm



POLISHING PADS Ø155 MM
BG155001 #40 #1 - orange
BG155002 #100 #2 - Black
BG155003 #200 #3 - Blue
BG155004 #400 #4 - Red
BG155005 #800 #5 - White
BG155006 #1500 #6 - Yellow
BG155007 #3000 #7 - Green



MAINTENANCE PADS
 Ø155 MM
BG155M004 #400
BG155M005 #800
BG155M006 #1500
BG155M007 #3000



E19434
 WATERTANK
 COMPLETE



E14651
 FRONT HANDLE



005014SR
 SUCTION
 HOSE Ø76 MM

2. Spare parts

Fig. 01 Frame complete

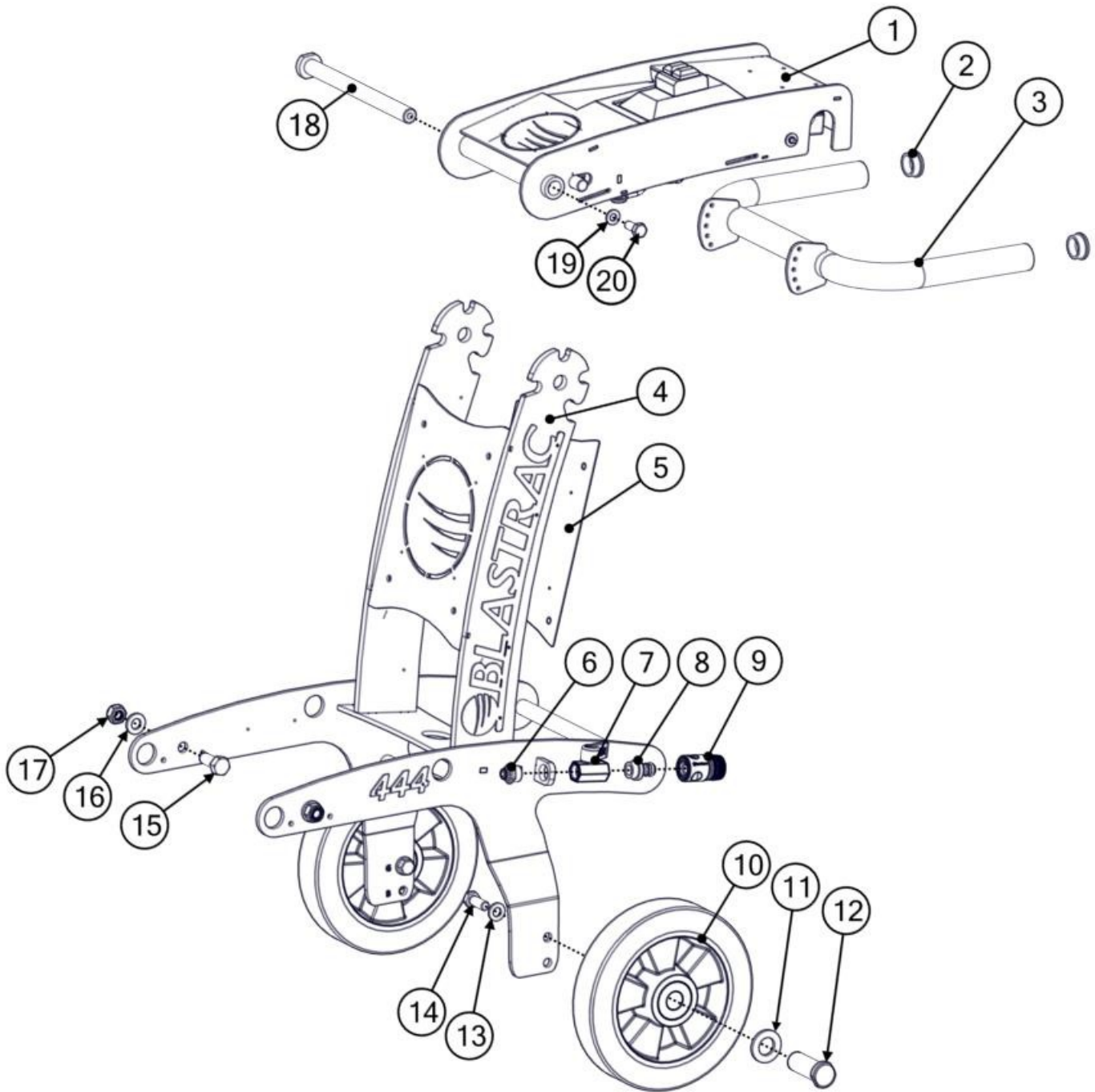




Fig. 01 Frame complete

Item	Part number	HQV Part number	Description	Remarks	Qty.
1	E15592	-	Main handle complete		1
2	BE0643	533407601	Tube cap round 35 mm		2
3	E14650	535191701	Handle for steer		1
4	E15444	535231201	Frame BMG-444		1
5	E19303	535080301	Background plate		2
6	E06279	533500701	Water reducing coupling		1
7	E06282	533252301	Ball valve mini		1
8	E06285	533278101	Water hose connection		1
9	E06286	533238401	Water coupling		1
10	E01491	533007501	Wheel		2
11		-	M24 washer		2
12	BG11765	533474901	Bolt for wheel		2
13		-	M12 washer		2
14		-	M12x30 Hexagon bolt		2
15		-	M14x35 Bolt		2
16		-	M14 washer		2
17		-	M14 Locking nut		2
18	E14661	535206201	Locking pin		1
19		-	M10 Washer		1
20		-	M10x25 Bolt		1

Fig. 02 Main Handle

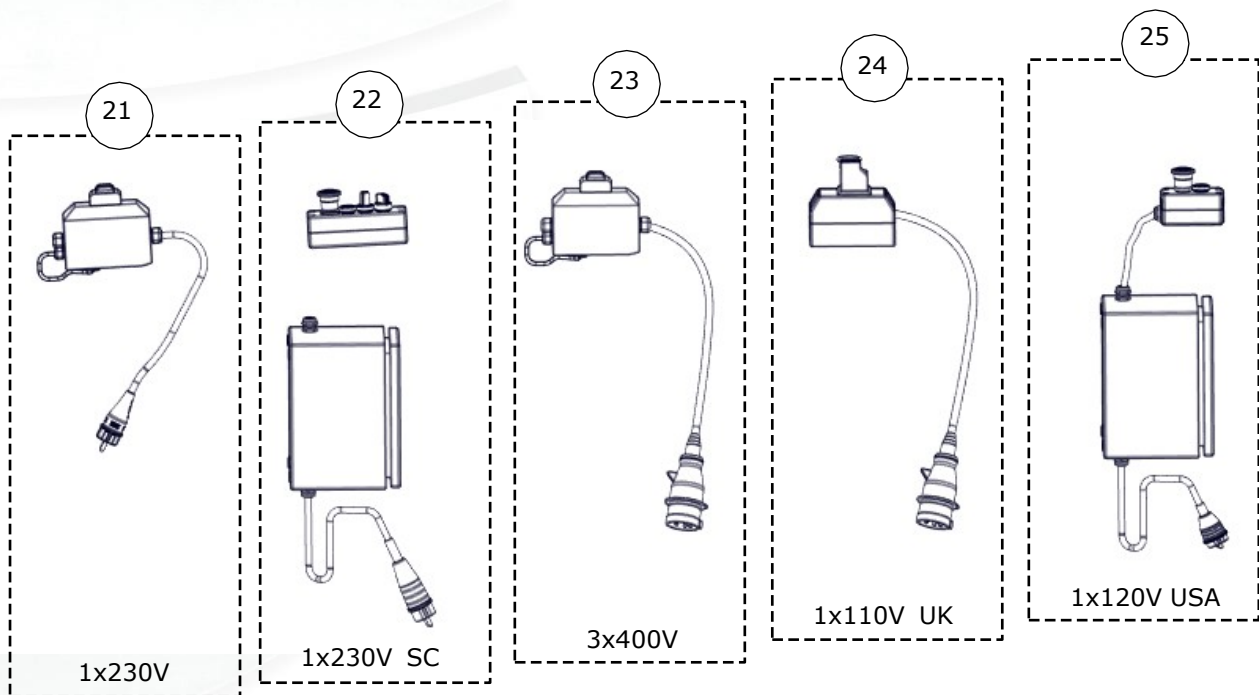
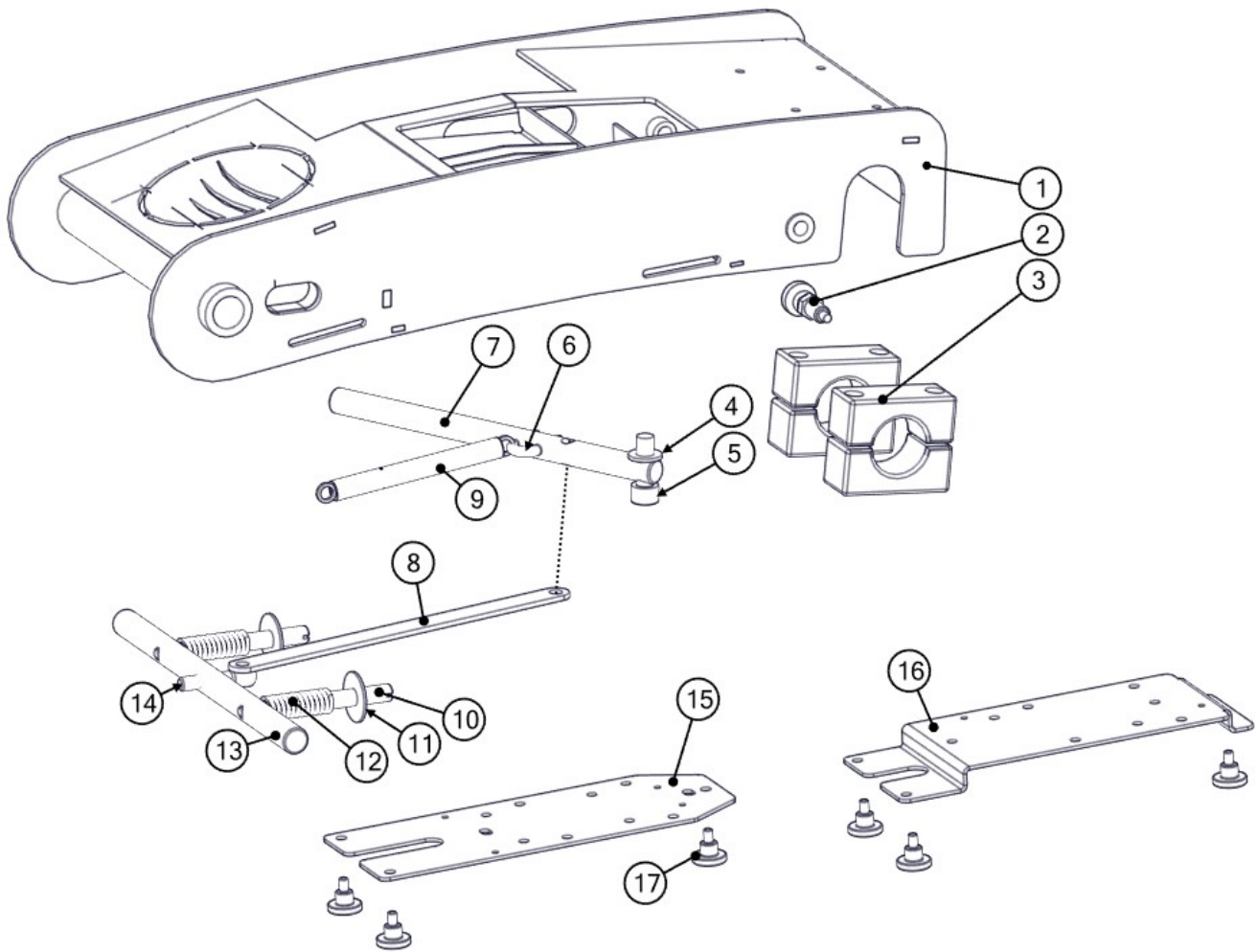




Fig. 02 Main Handle

Item	Part number	HQV Part number	Description	Remarks	Qty.
1	E15591	535211501	Main handle		1
2	001171-SS	534769801	Plunger		2
3	999-9156	533767701	Pipe clamp 35 mm (black)	Set of 2	2
4		-	M10 washer		1
5		-	M10x30 Hexagon socket head cap		1
6	BE0712	533238201	Wire rope clamp		1
7	E11227	533376201	Unlocking handle		1
8	E14910	535230801	Push strip		1
9	E10388	533238901	Tension spring		1
10	E10556	533225901	Spring axle		2
11	BE0029	534677301	M10 Washer D30		2
12	E09237	533287101	Spring		2
13	E11220	533233701	Locking axle		1
14		-	M8x40 eye bolt		1
15	E19302	535634601	Electro kit connection plate		1
16	E19304	535634701	Electro kit connection plate SC & USA	For SC and 1x120V	1
17	E06386	533364201	Disc knob		3
	E00587-2	534879901	Electro kit 230V / 50Hz		1
21	E00587-1/AU	534500801	Electro kit 230V / 50Hz	Australian version	1
	E08473	534767501	Plug 1p+N+E	(Part of elektrokit)	1
	E17663	535626301	Electro kit SC (excl. switchbox)	Speed control version	1
22	E09387	534735501	Switchbox SC	Speed control version	1
	E08473	534767501	Plug 1p+N+E	(Part of elektrokit)	1
23	E03951-1	535634301	Electro kit 3x400V / 50Hz		1
	9425	534767301	Plug 5p 16A + phase inverter	(Part of elektrokit)	1
24	E01532	533660201	Electro kit 110V / 50Hz UK		1
	E01530	534768001	Plug 32A 2p+E / 110V	(Part of elektrokit)	1
25	E17359	534326401	Electro kit 1x120V / 50-60Hz USA		1
	E17363	-	Plug 15A	(Part of elektrokit)	1

Fig. 03 Grinding head

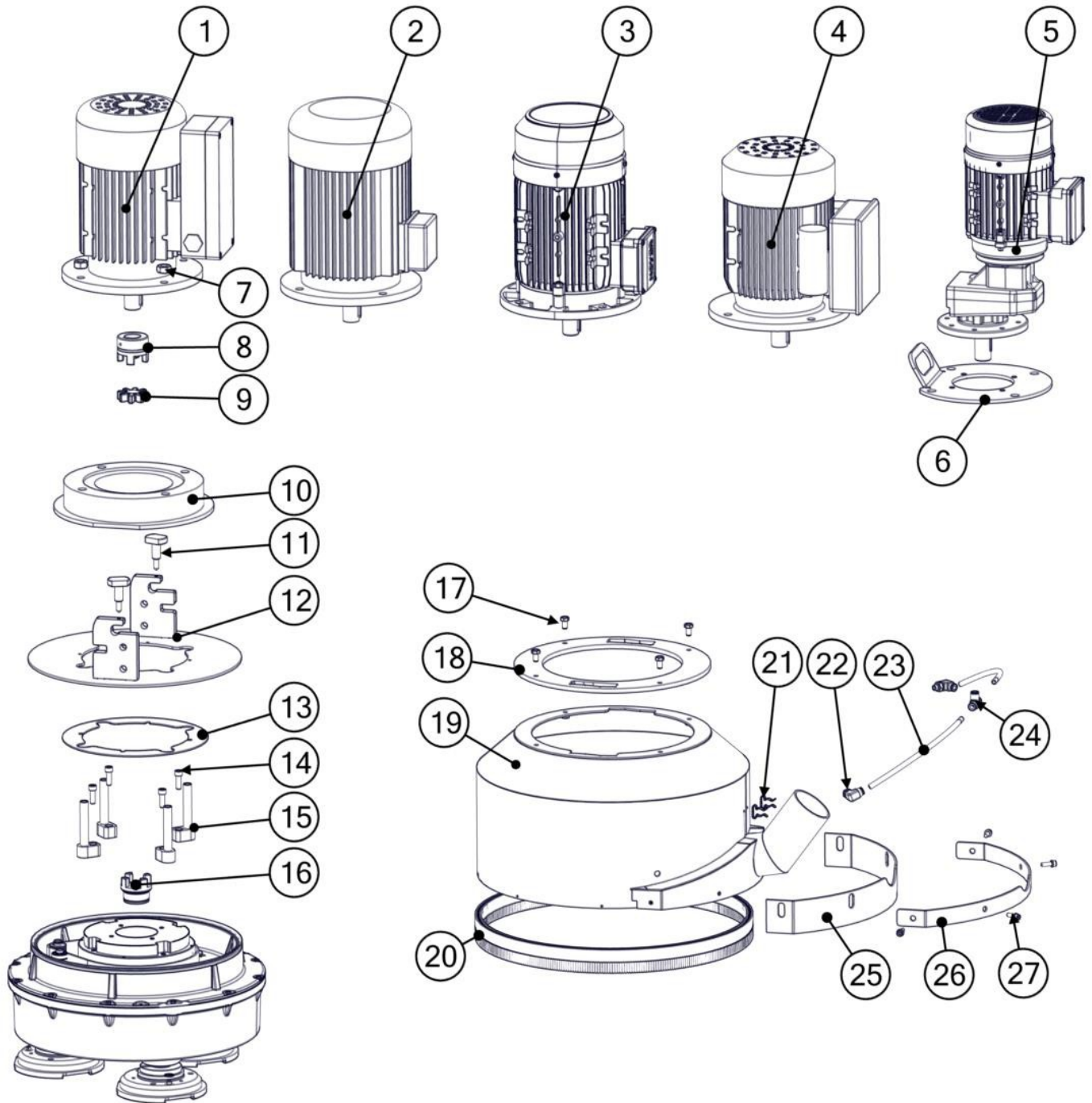


Fig. 03 Grinding head

Item	Part number	HQV Part number	Description	Remarks	Qty.
1	E10354	535654101	Motor 1x230V/50Hz 2,2kW		1
2	E09590	534712801	Motor 1x230V/50-60Hz 2,2kW SC	Speed Control	1
3	E01525-IE3	-	Motor 3x400V/50Hz 3,0kW		1
4	E01518	534713101	Motor 1x110V/50Hz 2,2kW UK		1
5	E14418	533075001	Motor 1x110V/60Hz 1,1kW USA	With gearbox	1
6	E14451	534262201	Plate for motor E14418		1
7		-	M14 Nut		4
8	E01483_1	533640801	Top Coupling		1
9	E01483/1	534414501	Coupling star		1
10	E14310	535177201	Fill-up block		1
11	E07360	533219301	Turn knob		2
12	E15435	535195101	Hinge plate		1
13	E19498	-	Spacer BMG-444		1
14		-	M8x25 Hex sockethead cap		4
15	E19581	-	Mounting cam with thread		4
16	E01483_2	533426901	Bottom coupling		1
17		-	M8x15 Bolt		4
18	E14789	534762701	PVC plate floating shroud		1
19	E15441	535179301	Floating shroud		1
20	BG-BRUSH 20MM	534888501	BG brush 20 mm		1,6 m
21	E06276	533199501	Pipe clamp		2
22	E06280	533266701	Water knee coupling		2
23	E06278	533259501	PU hose 8x5,5 mm Black		1,0 m
24	E06281	533375401	Water T-coupling		1
25	E15438	534816701	Rubber seal of floating shroud		1
26	E15437	535254701	Tightening steel strip		1
27		-	M8x20 Hex Sockethead cap		4
		-			
1.1	E10354/1	534362701	Box for Capacitors		1
1.2	E10354/2	534572901	Fan cover		1
1.3	E10354/3	534572001	Fan		1
1.4	E10354/4	534867301	Start-up Capacitor		1
1.5	E10354/5	534735601	Operating capacitor		1
		-			
3.1	E01525- IE3/BL/1	535635001	Fan		1
3.2	E01525- IE3/BL/2	535635601	Fan cover		1

Fig. 04 Planetary system - Upper part

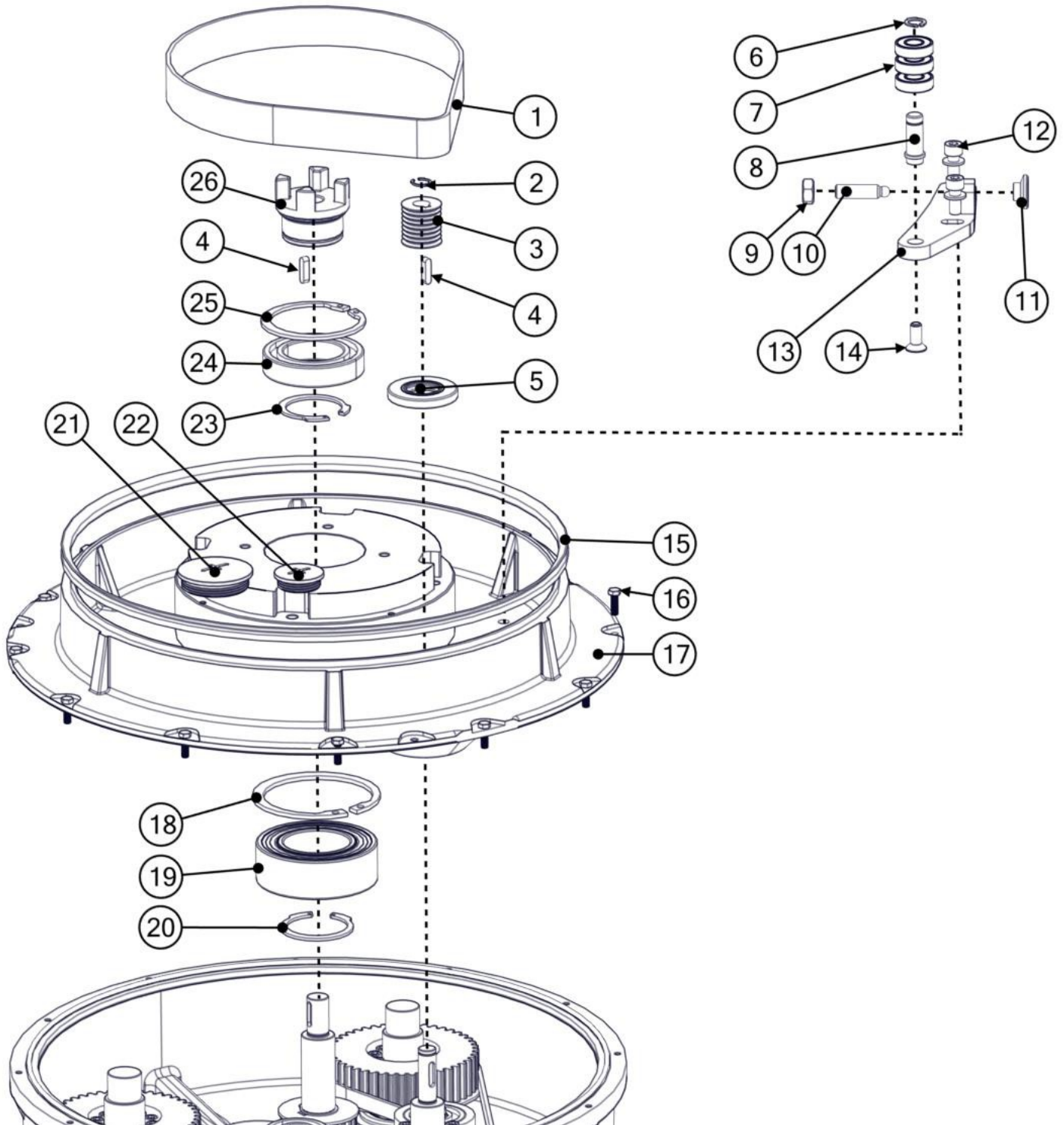


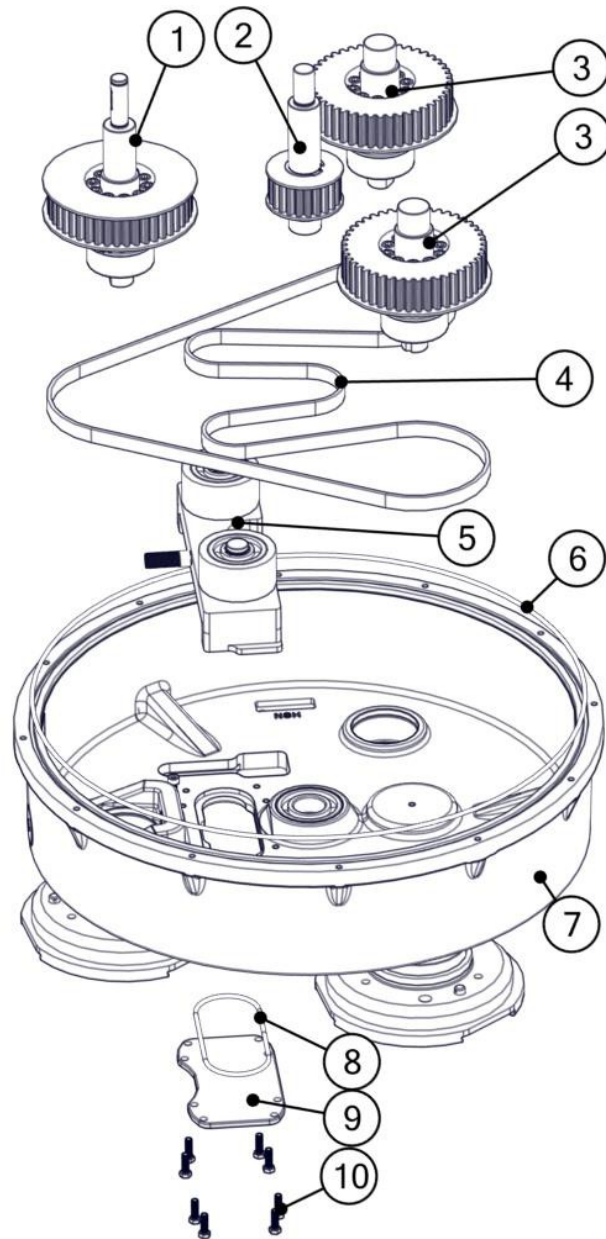


Fig. 04 Planetary system – Upper part

Item	Part number	HQV Part number	Description	Remarks	Qty.
1	E14132	535644901	Upper belt		1
2	BE0127	534806701	Circlip 13mm		1
3	E06050	533063501	Contra Pulley		1
4	BE0108	533270101	Key		2
5	E14153	535643801	Oil seal		1
6	BE0129	533722901	Circlip 12mm		1
7	E06203	533111101	Bearing		3
8	E19478	-	Tension axle		1
9		-	M10 Locking Nut		1
10	E19479	-	Threaded rod with ball head		1
11	E19480	-	Pressure piece for ball head		1
12		-	M8x20 Hex sockethead cap		2
13	E19477	-	Slide plate for tensioning		1
14		-	M8x20 countersunk head screw 10.9		1
15	E14156	535653001	V-seal		1
16		-	M5x16 Bolt		12
17		-	Housing cover		1
18	BE1224	-	Retaining ring 95mm		1
19	E01490	533600701	Bearing		1
20	BE0126	533220501	Retaining ring 50mm		1
21		-	Plug M50x1.5		1
22		-	Plug M32x1.5		1
23	BE0124	533239101	Retaining ring 45mm		1
24	E01477	533921501	Bearing		1
25	BE0625	-	Retaining ring 75mm		1
26	E01483_2	533426901	Bottom coupling		1

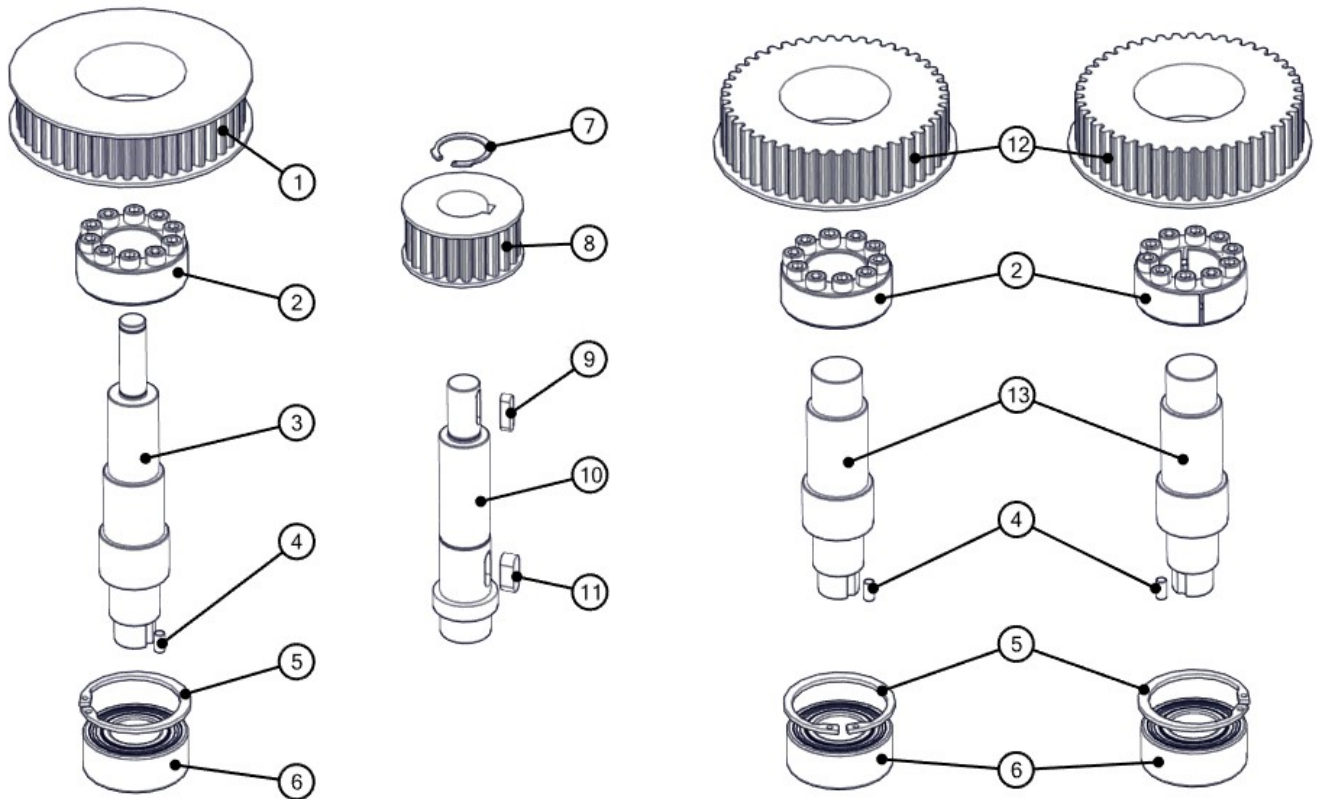
1
1

Fig. 05 Planetary system - Lower part



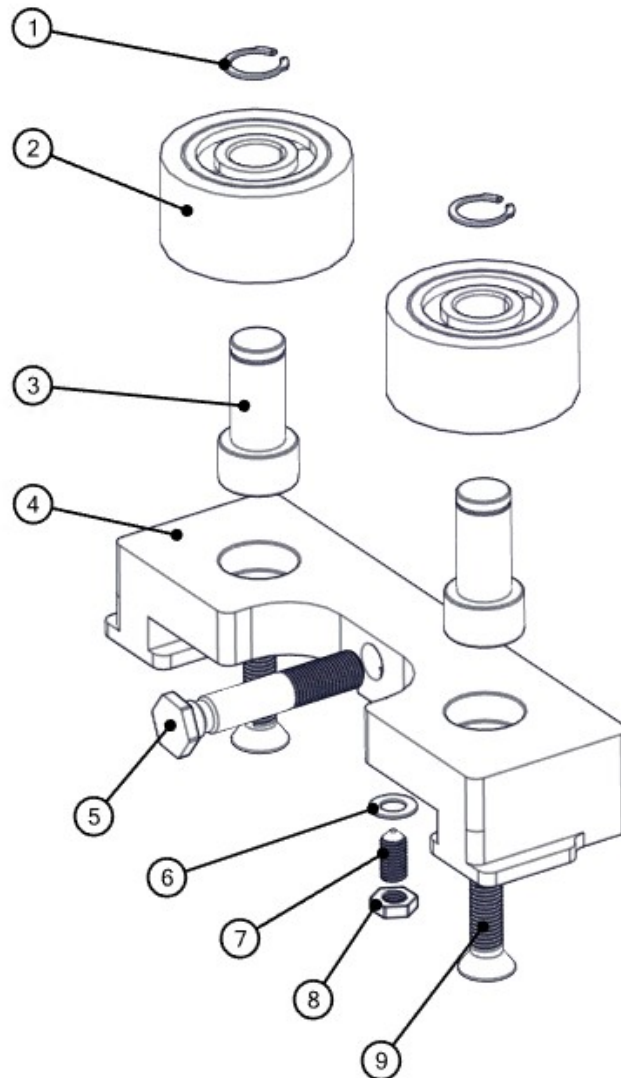
Item	Part number	HQV Part number	Description	Remarks	Qty.
1		-	Axle Pulley DF		1
2		-	Axle Centre pulley		1
3		-	Axle Pulley SF		2
4	E14131	535630401	Lower belt		1
5		-	Tensioning block lower belt complete		1
6	E14151	535644101	O-ring		1
7		-	Lower housing		1
8	E14152	535644001	O-ring		1
9	E14103	535630001	Controle cover		1
10		-	M5x16 Bolt + springlock washer		8

Fig. 06 Pulleys



Item	Part number	HQV Part number	Description	Remarks	Qty.
1	E14143	535645701	Pulley DF		1
2	E14145	535649401	Tightening set		3
3	E14111	535625101	Contra axle		1
4	BE1228	-	Cylindrical dowel pin		3
5	BE0133	534806901	Retaining ring		3
6	E03245	533132601	Bearing		3
7	BE0076	533914201	Circlip		1
8	E14141	535629001	Pulley centre		1
9	BE0108	533270101	Key		1
10	E14112	535628901	Centre axle		1
11	BE0109	533293401	Key		1
12	E14142	535645801	Pulley SF		2
13	E14110	535625001	Axle		2

Fig. 07 Tensioning block lower belt



Item	Part number	HQV Part number	Description	Remarks	Qty.
1	MP04054	533107201	Circlip		2
2	E14144	535650501	Tension Roller incl. bearings		2
3	E14114	535650301	Tension axle		2
4	E14113	535650401	Tension body		1
5	E14146	535623701	Adjusting bolt BMG-444		1
6		-	M8 Spring lock washer		1
7	BE1226	-	Locking screw		1
8	BE0265	534693801	M8 Low nut		1
9	E14161	535641201	M10x25 Hexagon socket countersunk head screw	10.9	2

Fig. 08 Buffer system

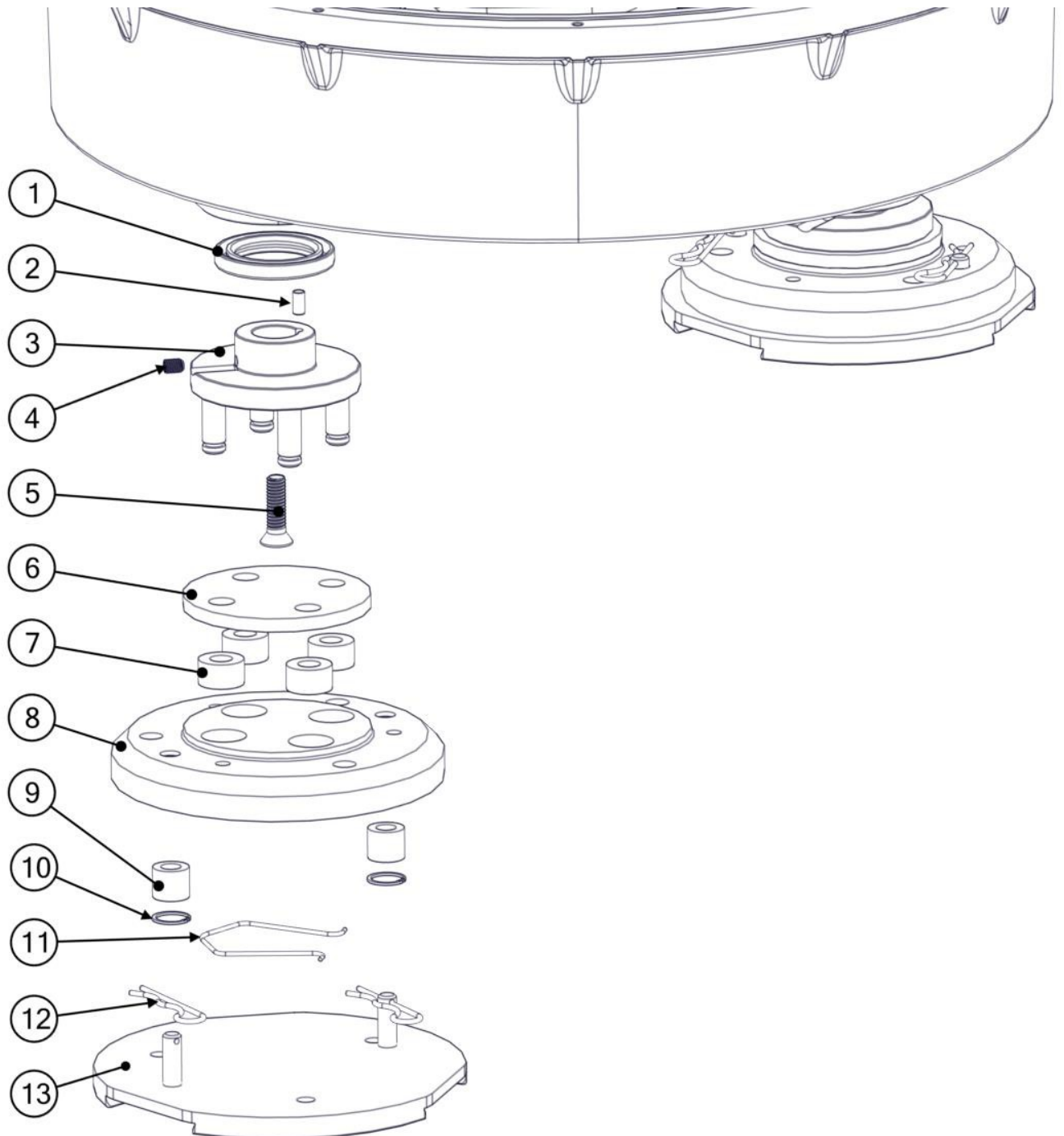


Fig. 08 Buffer system

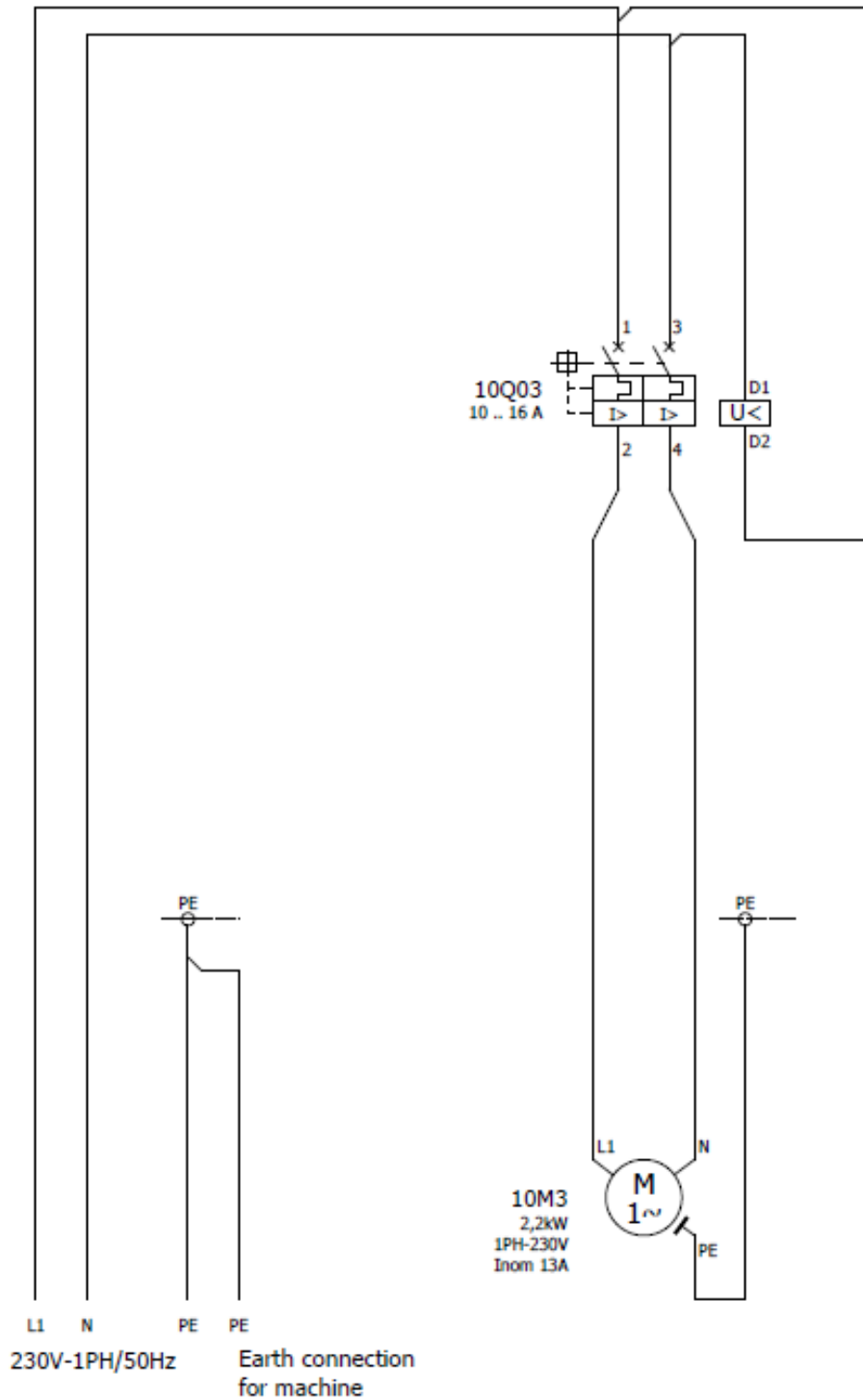
Item	Part number	HQV Part number	Description	Remarks	Qty.
1	E14154	535643901	Seal		3
2	BE1228	-	Cylindrical Dowel pin		3
3	E14117	535637101	Fork BMG-444		3
4	BE0473	535309401	Set Screw		3
5	BE1234	-	M8x25 Countersunk head screw 10.9		3
6	E01476	533561201	Flex disc rubber plate		3
7	E03292	533487201	Flex disc rubber (black)		12
8	E01472	533220101	Flex disc		3
9	E03293	533546001	Diamond disc rubber (white)		6
10	BE0103	533267901	Retaining ring		6
11	E03749	533449501	Locking spring		3
12	BE0072	533531801	Spring cotter		6
13	E13673	534243401	155mm Diamag slide wing plate		3

3. Electric schedules

E00587-2

1~230V / 50Hz

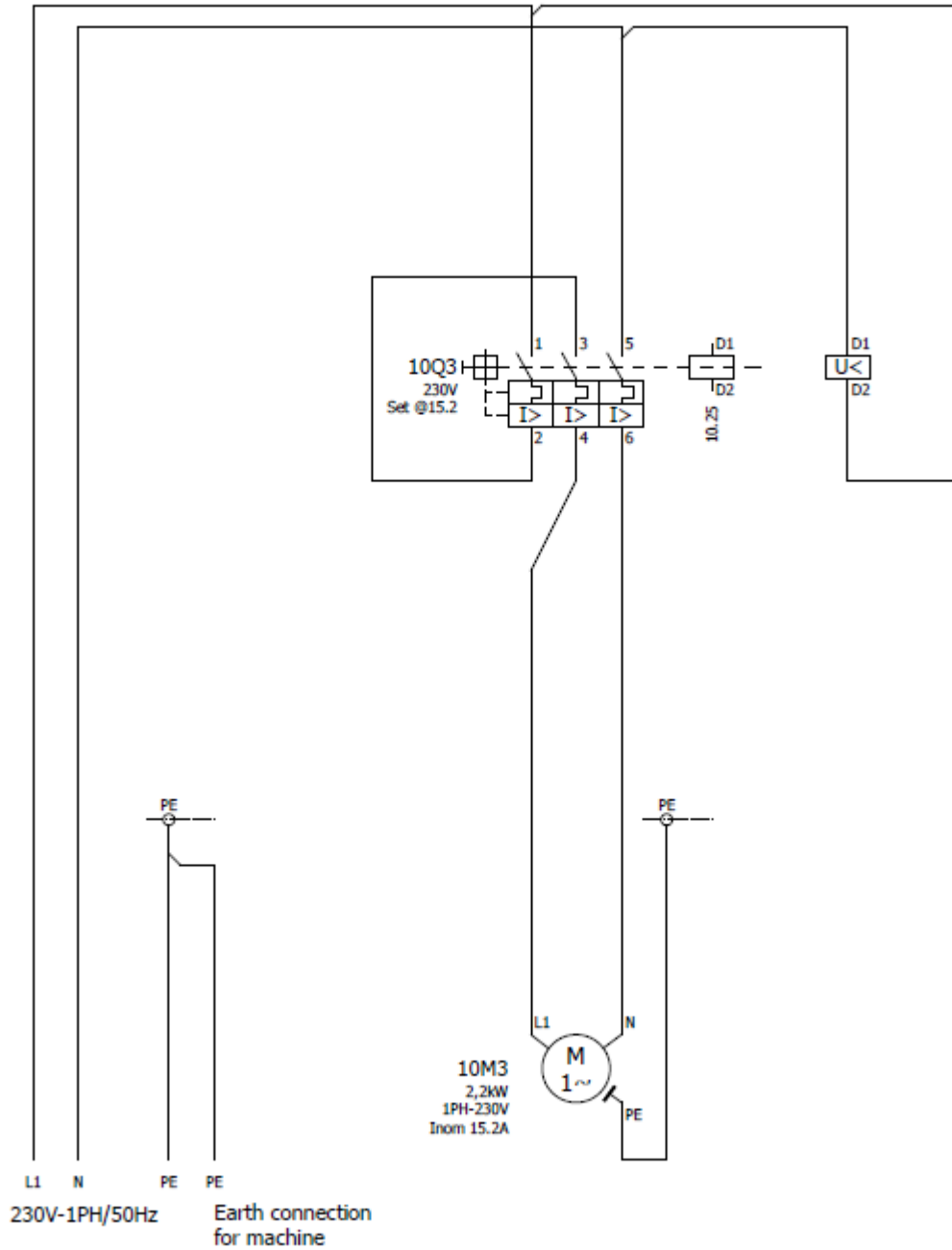
PJ19.1339.00.0



E00587-1/AU

1~230V / 50Hz

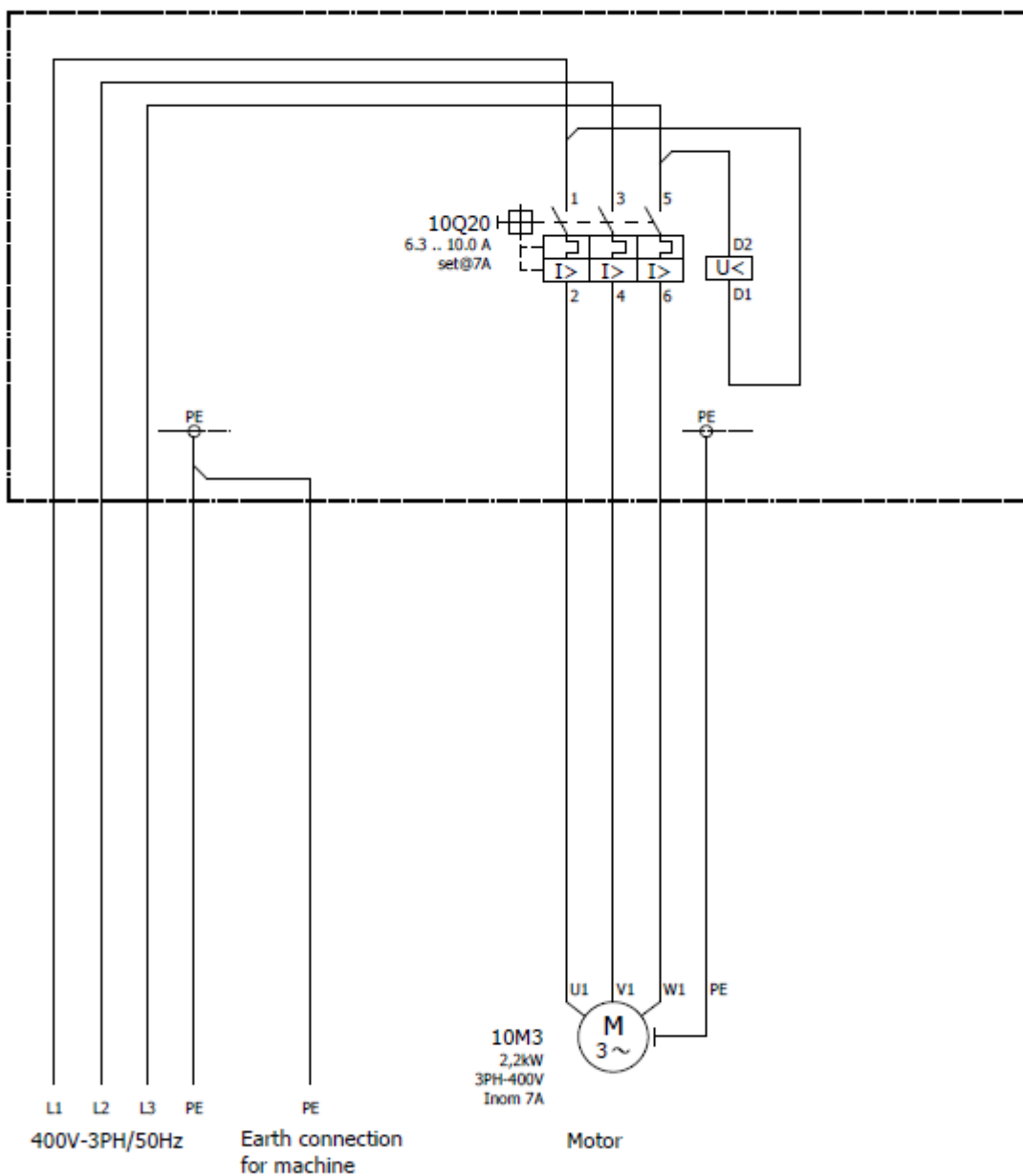
PJ15.1173.04.0



E03951-1

3~400V / 50Hz

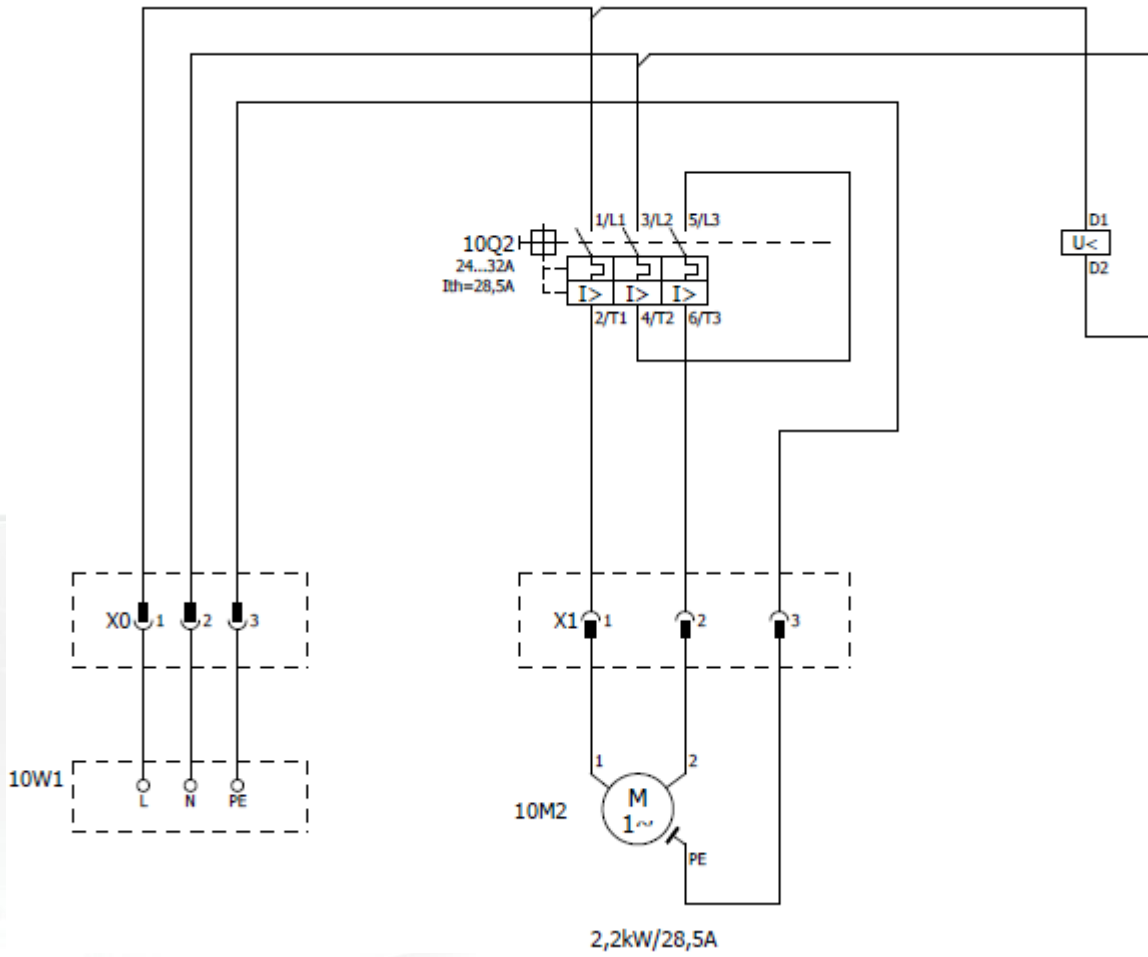
PJ21.1401.00.0



E01532-1

1~110V / 50Hz

PJ21.1407.01





BLASTRAC EUROPE

WE'RE READY TO ASSIST YOU!

BLASTRAC THE NETHERLANDS

EUROPEAN HEAD OFFICE
Utrechthaven 12
NL - 3433 PN Nieuwegein
Tel.: +31 (0)30 601 88 66
Fax: +31 (0)30 601 83 33
Email: info@blastrac.nl
WWW.BLASTRAC.EU

BLASTRAC POLAND

SALES & SERVICE CENTRE
Golina, ul. Dworcowa 47E
63-200 Jarocin
Tel.: +48 (0)62 740-41-50
Fax: +48(0)62 740-41-51
Email: info@blastrac.pl
WWW.BLASTRAC.PL

BLASTRAC FRANCE

SALES & SERVICE CENTRE
ZI - 29, Av. des Temps Modernes
F - 86360 Chasseneuil du Poitou
Tel.: +33 (0)5 49 00 49 20
Fax: +33 (0)5 49 00 49 21
Email: info@blastrac.fr
WWW.BLASTRAC.FR

BLASTRAC ITALY

SALES & SERVICE CENTRE
S.S. 10 Padana Inferiore, 41
IT - 29012 Caorso (PC)
Tel.: +39 0523 814241
Fax: +39 0523 814245
Email: info@blastrac.it
WWW.BLASTRAC.IT

BLASTRAC GERMANY

SALES & SERVICE CENTRE
Richard-Byrd-Str. 15
50829 Köln
Tel.: +49 (0) 221 709032-0
Fax: +49 (0) 221 709032-22
Email: info@blastrac.de
WWW.BLASTRAC.DE

BLASTRAC UKRAINE

SALES & SERVICE CENTRE
Nezalezhnosti 14, of. 21
07400 Brovary
Tel.: +38 (0)44 222 51 28
Fax: +38 (0)44 277 98 29
Email: info@blastrac.com.ua
WWW.BLASTRAC.COM.UA

BLASTRAC SPAIN

SALES & SERVICE CENTRE
Calle del Estío, 9
E - 28500
Arganda del Rey, Madrid
Tel.: +34 91 660 10 65
Fax: +34 91 672 72 11
Email: info@blastrac.es
WWW.BLASTRAC.ES

BLASTRAC UNITED KINGDOM

SALES & SERVICE CENTRE
Unit 2a, Outgang Lane, Dinnington
Sheffield, South Yorkshire
GB - S25 3QU
Tel.: +44 (0) 1909 / 569 118
Fax: + 44 (0) 1909 / 567 570
Email: info@blastrac.co.uk
WWW.BLASTRAC.CO.UK

BLASTRAC MIDDLE EAST

SALES & SERVICE CENTRE
P.O. box 29424
Dubai / United Arab Emirates
Tel.: +971 4 3245760
Fax: +971 4 3245761
Email: info@blastracdxb.ae
WWW.BLASTRAC.AE

BLASTRAC NORDIC

SALES & SERVICE CENTRE
Lekstorps Industriväg 13D,
443 41, Gråbo
Sweden
Tel.: +46 (0) 31 30 333 55
Email: info@blastrac.se
WWW.BLASTRAC.SE

BLASTRAC INDIA

SALES & SERVICE CENTRE
G.B. Warehousing, GAT NO- 523,
Pune- Nagar Road, Wagholi
Pune- 412 207
Tel.: +91 99213 98109
Email: info.blastrac.in
WWW.BLASTRAC.IN