

SERVICE MANUAL BMS-220ADB

VERSION 2.12

From serial number 30340B and up.



Inspection comments

Inspection before initial operation on: _____

By: _____

Date of initial operation: _____

Serial number & Year of manufacture: _____

Recurring inspections / maintenance log

Date / Hour counter	Findings	Repairs / Cleaning	Test on	By*

*Competent person



Index

Maintenance Log	02
1. Spare parts	04
2. Hydraulic schedule	17
Contact	



1. Spare parts

Fig. 01 Overview

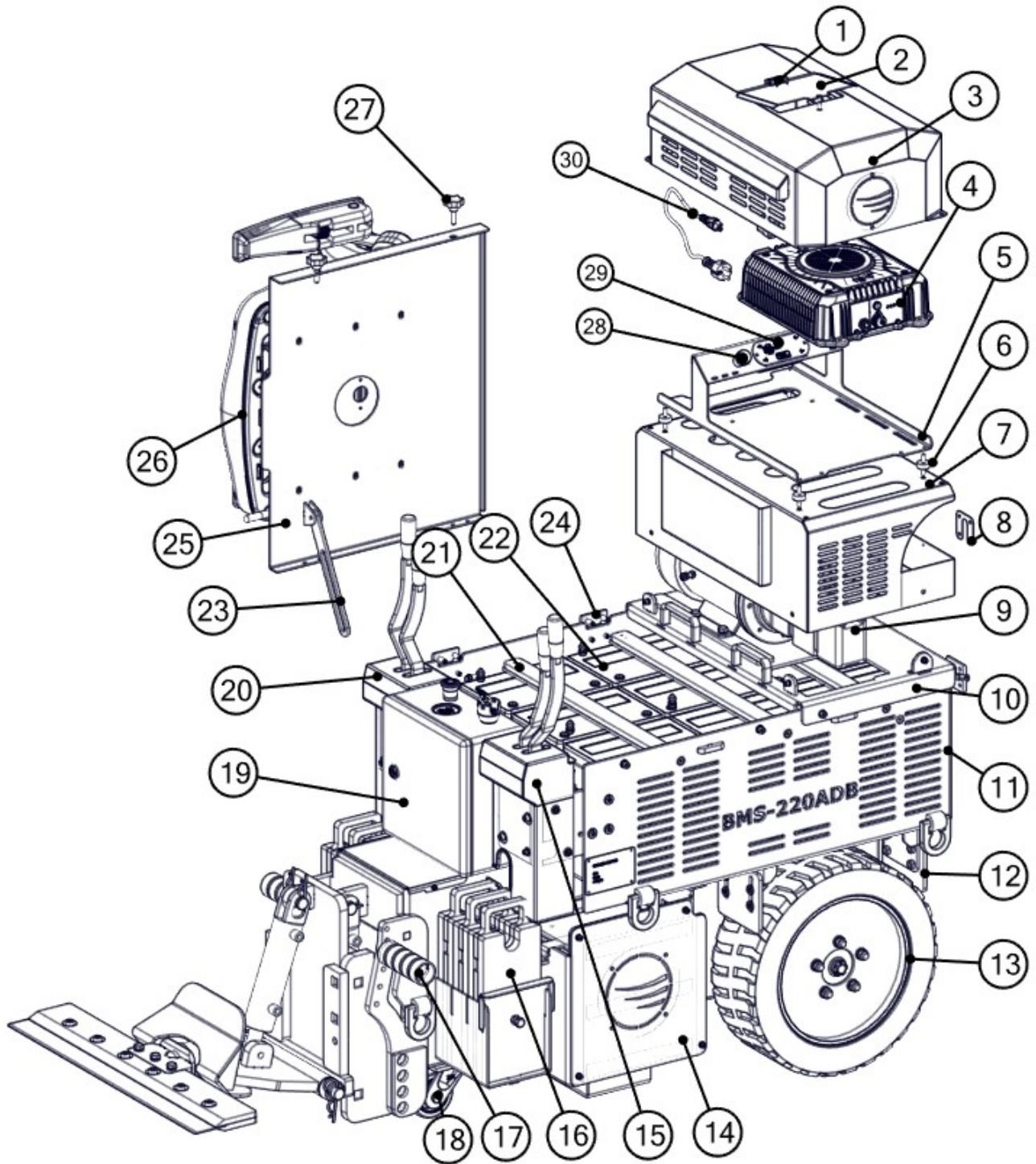


Fig. 01 Overview

Item	Blastrac PN	HQV PN	Description	Qty.
1	E11124	534768601	Hinge 40x40	1
2	E11123	533130401	Charger panel cover	1
3	E11122	533017401	Charger cover	1
4	E14536	534388101	Charger 60A	1
5	E14865	534388601	Charger mounting plate	1
6	E09941	534929201	Vibro isolator M6	4
7	E11168	533729001	Upper battery cover	1
8	E09940	533228601	Plug plate	1
9	E09720	533739801	Motor with flange, pumps & connections	1
	E10738	533270401	2x hydraulic pump only	1
	E08378	533841401	Electro motor only	1
10	E11261	533470501	Tube cover back	1
11	E11260	533008701	Tube weldmet	1
12	E09716	535236101	Scraper	4
13	E09169	533768901	Wheel, including Rim for BMS-220ADB	2
14	E09942	535241601	Side cover LH	1
15	E09702	535246101	Spool cover LH	1
16	E03185-1	533437001	Weight welded version of E03185	6
17	E08622	533454101	Foot support	2
18	E09277	533298401	Front wheel	1
19	E09376	535364301	Electrobox	1
20	E15284	-	Spool cover RH	1
21	E08632	533601001	Battery hold down strip	3
22	E09174	533401301	BMS-220 battery	12
23	E09838	533444801	Protection plate	1
24	E11255	533420701	Hinge 60x60	4
25	E11262	534911401	Tube cover front	1
26	E13871	533925001	Seat incl. switch for BMS-220ADB	1
	E13871/1	533925001	Seat only	1
	E13871/2	533246901	Arm rests (set) for E13871	1
	E13871/3	533411901	Seat belt set	1
27	BE0577	534046801	M8x30 Therm Disc Knob threaded pin	2
28	E14536_2	-	Charge indicator	1
29	E14535	534953801	Y-hub	1
30	E14536_230 V_EU	535623101	230V powercable with plug	1

Fig. 02 Cutting head

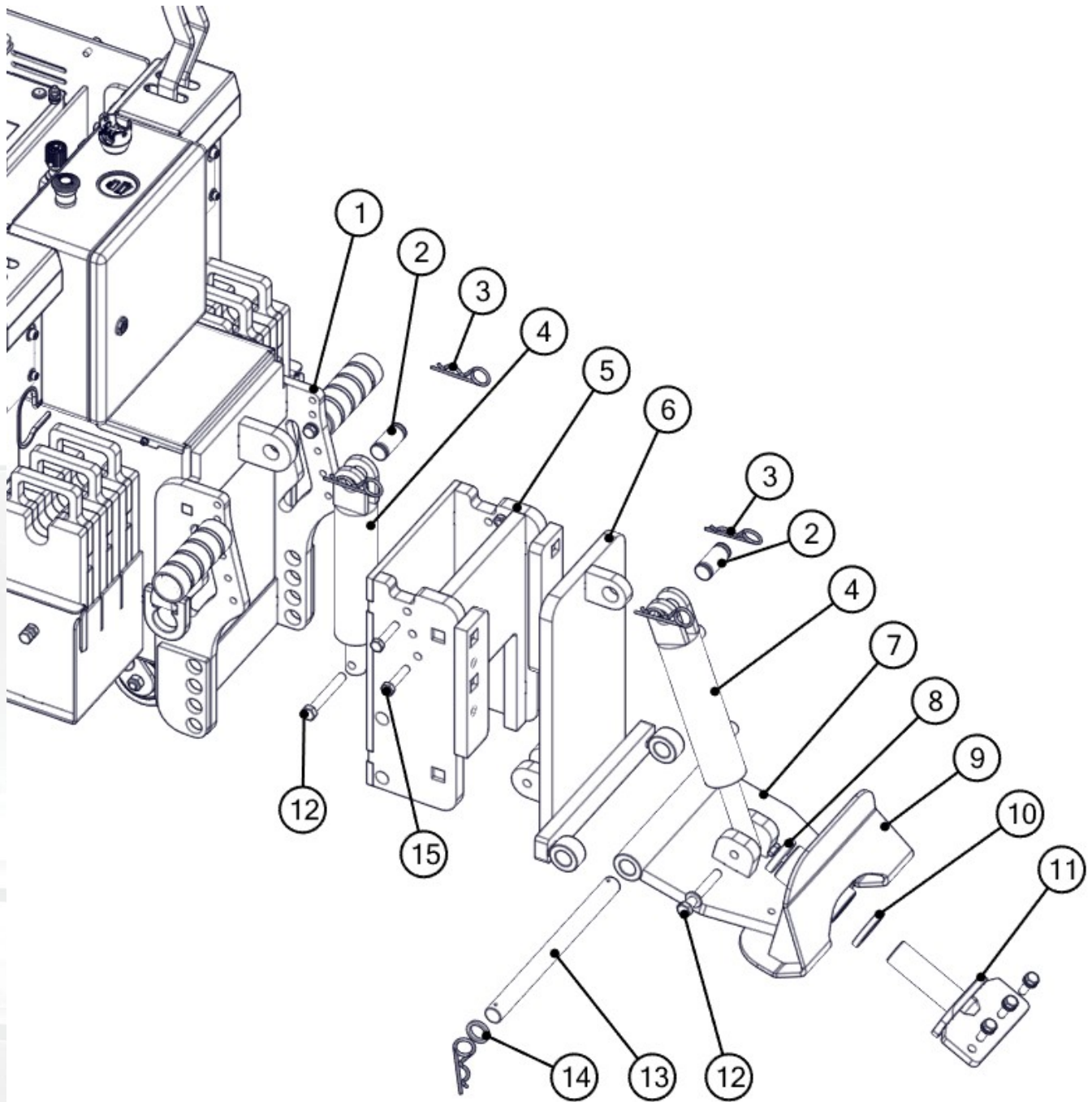




Fig. 03 Rear wheel & Oil filter

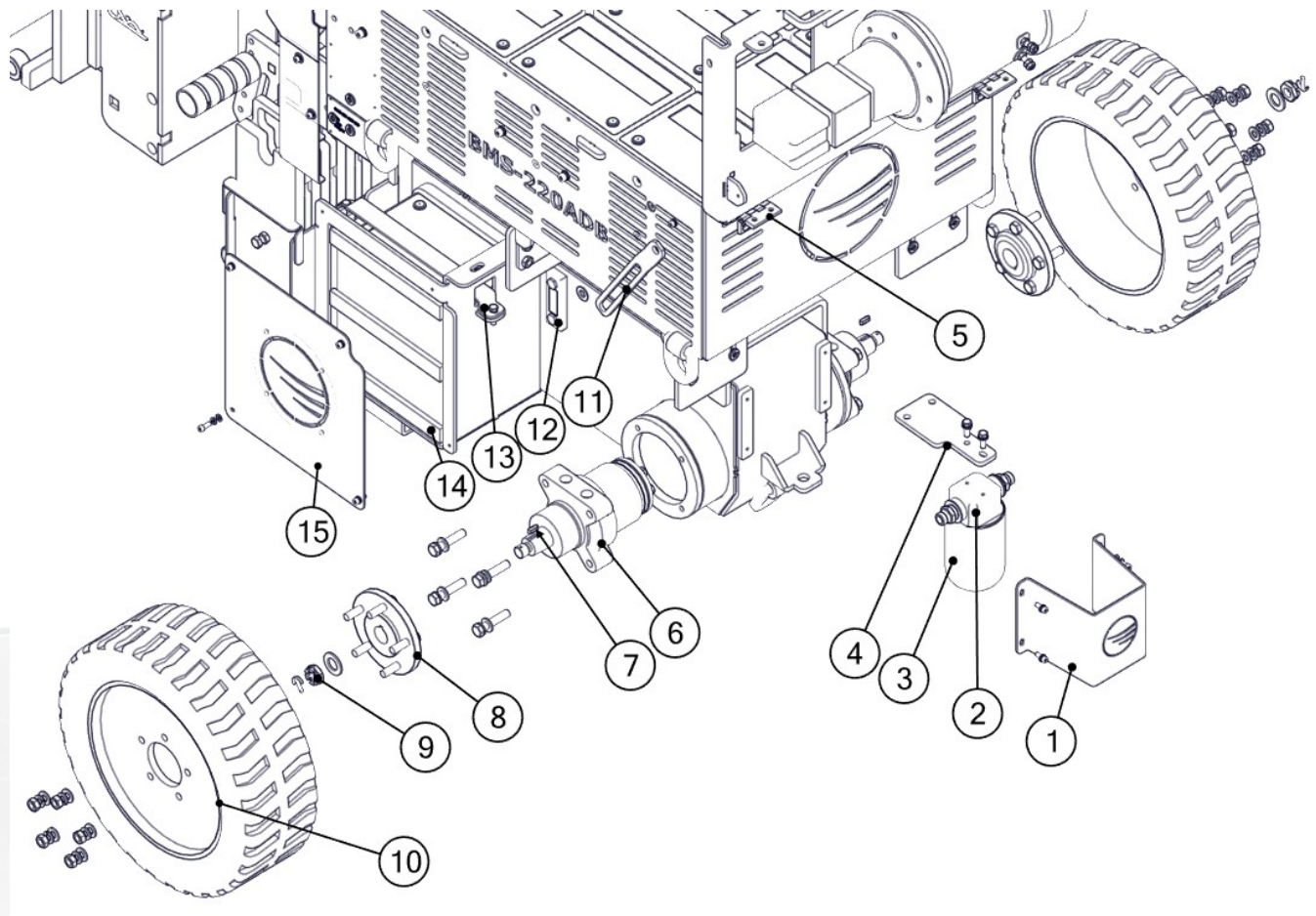




Fig. 03 Rear wheel & Oil filter

Item	Blastrac PN	HQV PN	Description	Remarks	Qty.
1	E09709	533741601	Filter cover		1
2	E10772	533299801	Filter head		1
3	E10773	533394801	Filter element		1
4	E09708	533131301	Filter bracket		1
5	E11255	533420701	Hinge 60x60		2
6	E07732	533280701	Hydraulic motor		2
7	E07732/1	533801701	Parallel key for hydro motor		2
8	E09170	533190601	Wheel hub		2
9	E07732/3	534736801	Nut M20x1,5		2
10	E09169	533768901	Wheel, including Rim for BMS-220ADB		1
11	E09805	533392001	Hinge plate		1
12	350-4172-S	533872801	Level gauge with thermo		1
13	E09796	533550001	Battery holder plate		2
14	E09715	-	Adhesive rubber seal 30x20x260mm		6
15	E09942	535241601	Side cover LH		1
	E00481	534638501	Hydraulic oil HV46		40L



Fig. 04 Steer handle RH

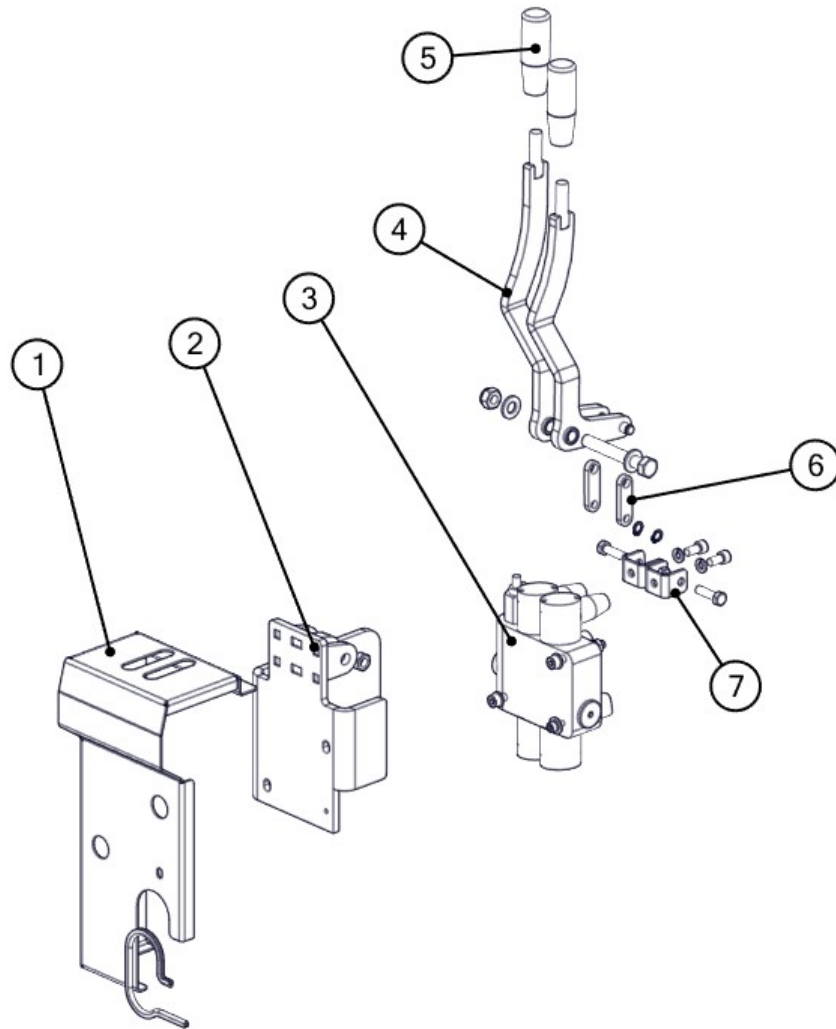


Fig. 04 Steer handle RH

Item	Blastrac PN	HQV PN	Description	Qty.
1	E15284	-	Spool cover RH	1
2	E15285	535243501	Spool bracket RH	1
3	E10352	533865301	Double spool control	1
4	E09707	533094701	Steering handle RH	2
5	E09701	533916301	Handle grip	2
6	E09718	533222301	Spool tie	2
7	E09717	533734201	Spool lever bracket	2

Fig. 05 Steer handle LH

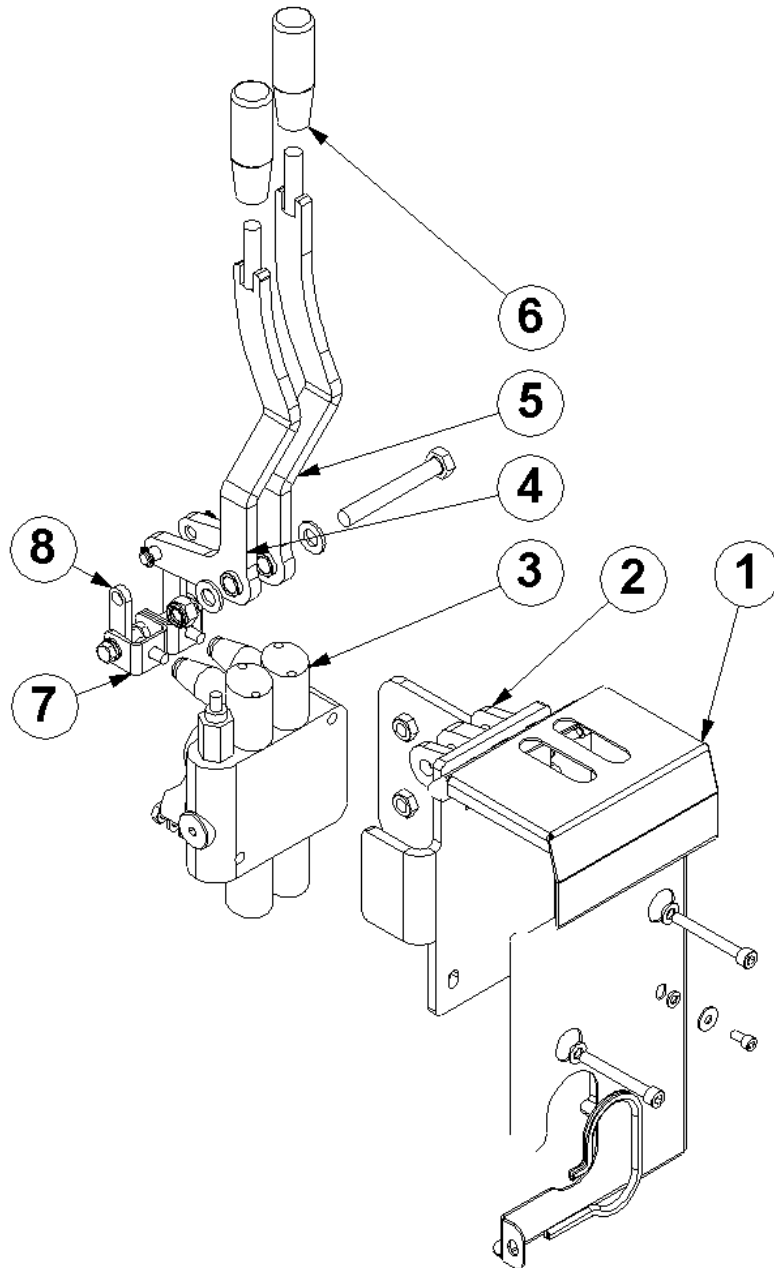


Fig. 05 Steer handle LH

Item	Blastrac PN	HQV PN	Description	Qty.
1	E09702	535246101	Spool cover	1
2	E08638	535165601	Double spool bracket	1
3	E10352	533865301	Double spool control	1
4	E09706	533026501	Lifting handle	1
5	E09700	533369201	Steering handle LH	1
6	E09701	533916301	Handle grip	2
7	E09717	533734201	Spool lever bracket	2
8	E09718	533222301	Spool tie	2

Fig. 06 Frame & Electrobox

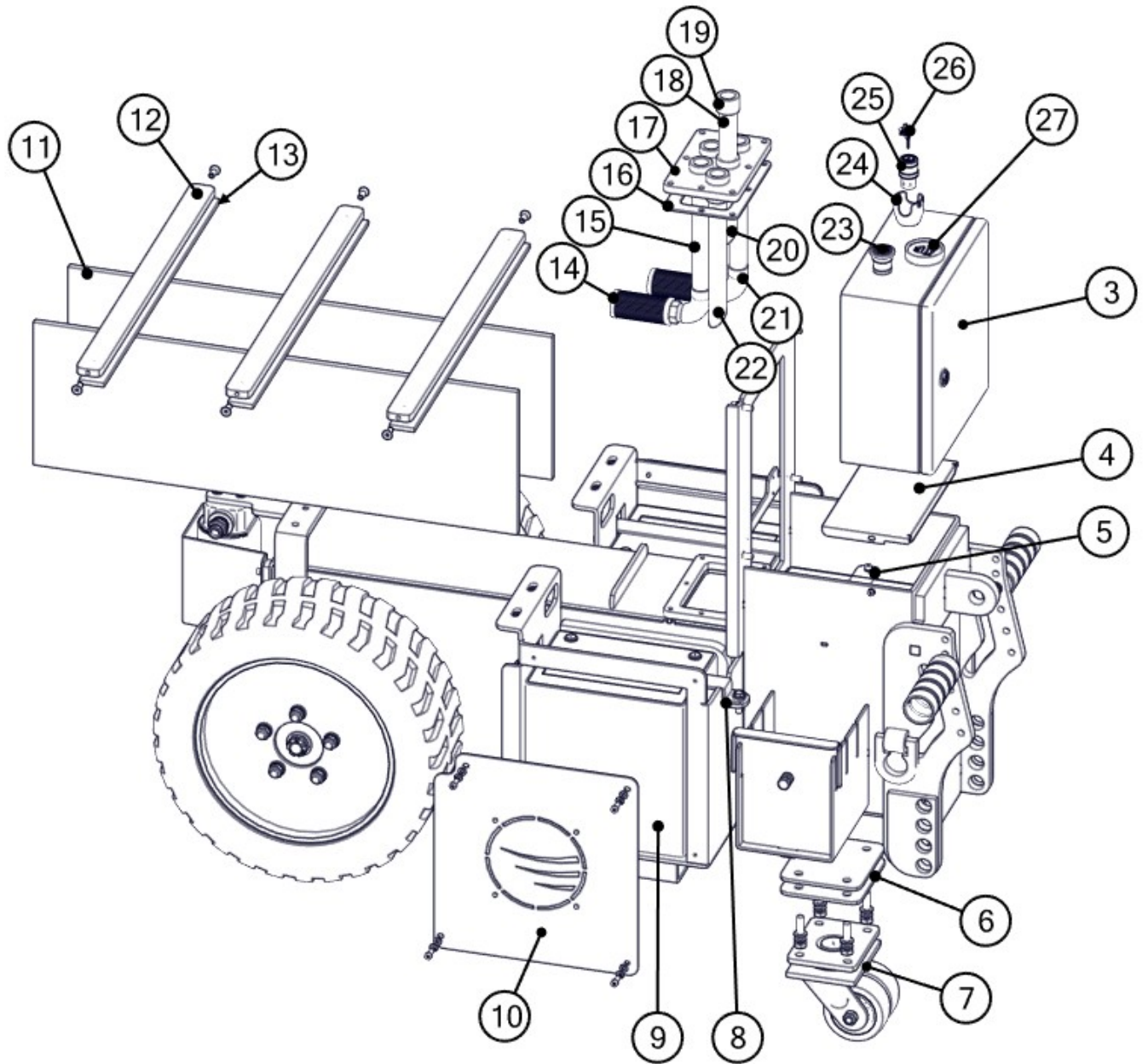




Fig. 06 Frame & Electrobox

Item	Blastrac PN	HQV PN	Description	Qty.
3	E09376/GLOBAL	535364301	Electro box	1
4	E08628	535184101	Front cover	1
5	E08629	533886501	Front battery tight plate	1
6	E09712	533343101	Wheel spacer	2
7	E09277	533298401	Front wheel	1
8	E09796	533550001	Battery holder plate	1
9	E09174	533401301	Battery – BMS-220	12
10	E09710	535242001	Side cover - RH	1
11	E09175	534310201	Battery spacer	2
12	E08632	533601001	Battery hold down strip	3
13	E08633	-	Battery seal holder	3
14	E13161	534734801	Oil suction filter	2
15	E13163	-	Oil suction pipe 3/4"	2
16	E09172	533225701	Oil tank seal	1
17	E09705	533174501	Hose connection plate	1
18	E09837	533018101	Breather pipe	1
19	E09939	533211401	Breather mounting bush	1
20	E11017	535367001	Second line pipe	1
21	E13162	-	Knee 90°	2
22	E09723	535360501	Oil return pipe	2
23	E07396_5	534031201	Emergency stop	1
24	E10708	533696601	Ignition switch protection	1
25	E08483	533768601	Ignition switch + keys for BMS-220	1
26	E13353	533814401	Keys (two pieces) for BMS-220	1
27	E17217	534064501	Battery indicator	1



Fig. 07 Chisels, Blades & Bladeholders

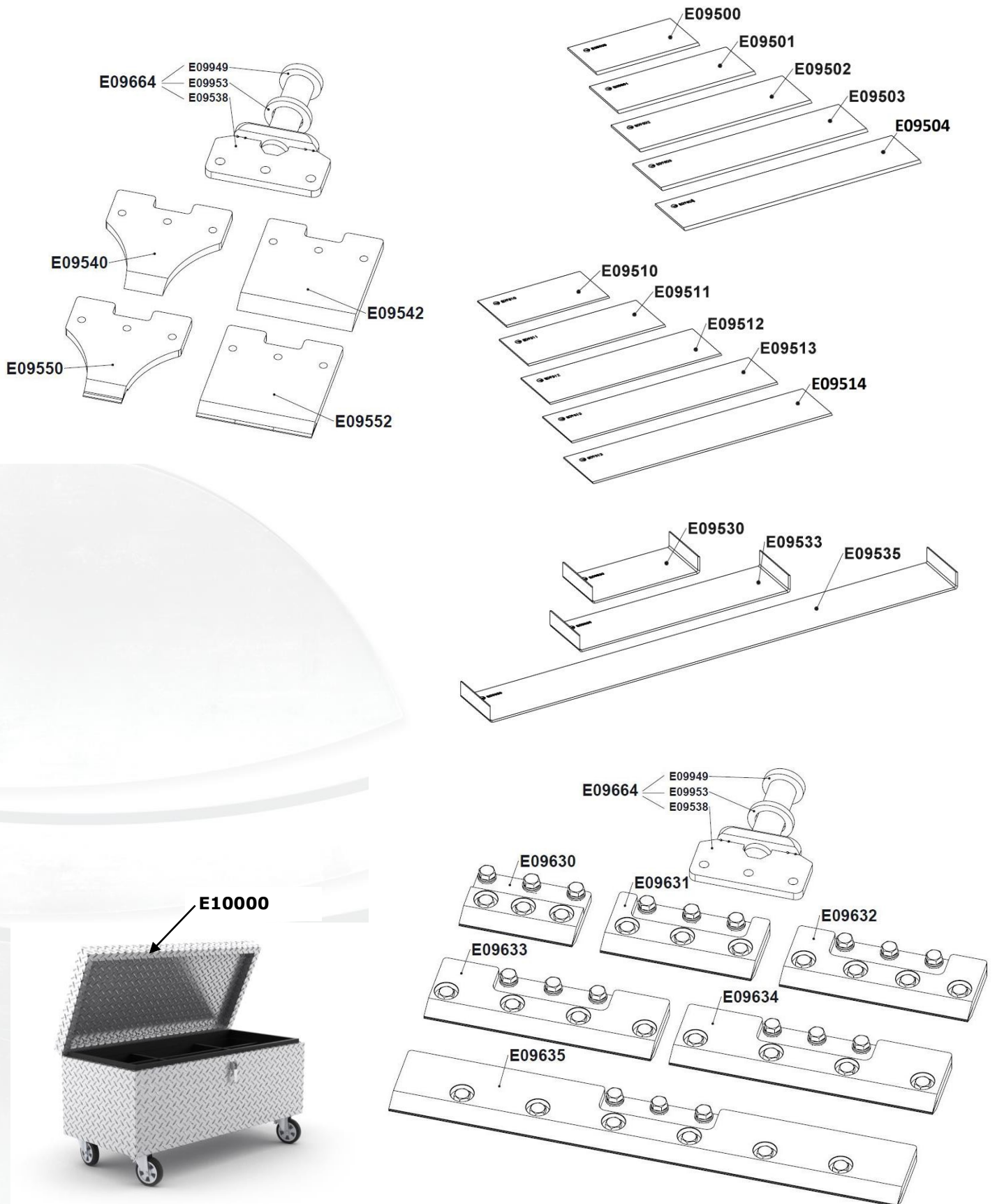




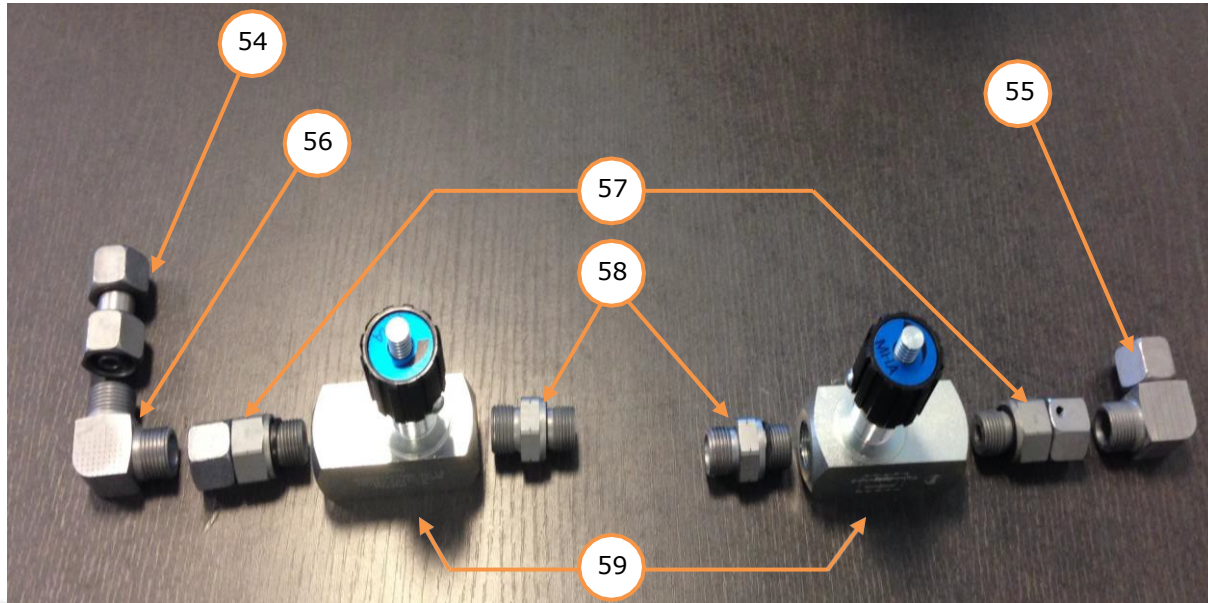
Fig. 07 Chisels, Blades & Blade-holders

Item in toolbox E10000	Blastrac PN	HQV PN	Description	Qty.
•	E09664	534046701	Support for chisel or blade holder	1
•	E09540	533858501	Premium chisel 51x12 (2")	1
•	E09542	533865601	Premium chisel 152x12 (6")	1
•	E09550	533127801	Heavy duty chisel 51x12 (2") With tungsten carbide tips	1
•	E09552	533128001	Heavy duty chisel 152x12 (6") With tungsten carbide tips	1
•	E09500	534618201	Heavy duty blade 152x76x2.5 (6")	1
•	E09501	534618301	Heavy duty blade 203x76x2.5 (8")	1
•	E09502	534618501	Heavy duty blade 254x76x2.5 (10")	1
•	E09503	534618901	Heavy duty blade 305x76x2.5 (12")	1
	E09504	534619101	Heavy duty blade 355x76x2.5 (14")	1
•	E09510	534773201	Premium blade 152x76x1.6 (6")	1
•	E09511	534773301	Premium blade 203x76x1.6 (8")	1
•	E09512	534773701	Premium blade 254x76x1.6 (10")	1
•	E09513	534773901	Premium blade 305x76x1.6 (12")	1
	E09514	534774101	Premium blade 355x76x1.6 (14")	1
•	E09530	534825501	Self-Scoring blade 152x76x1.5 (6")	1
•	E09533	534826101	Self-Scoring blade 305x76x1.5 (12")	1
•	E09535	533830501	Self-Scoring blade 686x76x1.5 (27")	1
•	E09630	533335701	Blade holder 152mm (6")	1
•	E09631	533090301	Blade holder 203mm (8")	1
•	E09632	533495601	Blade holder 254mm (10")	1
•	E09633	533110301	Blade holder 305mm (12")	1
•	E09634	534329201	Blade holder 355mm (14")	1
•	E09635	533335601	Blade holder 686mm (27")	1
	E10000	534774301	Toolbox Contains all blades, chisels and holders indicated with a point (•) in the first column + Professional tool set E10108	1
•	E10000/BOX	534901301	Toolbox (Empty)	1
•	E10108	534901701	Tool set (Contains various tools, nuts, bolts and washers)	1

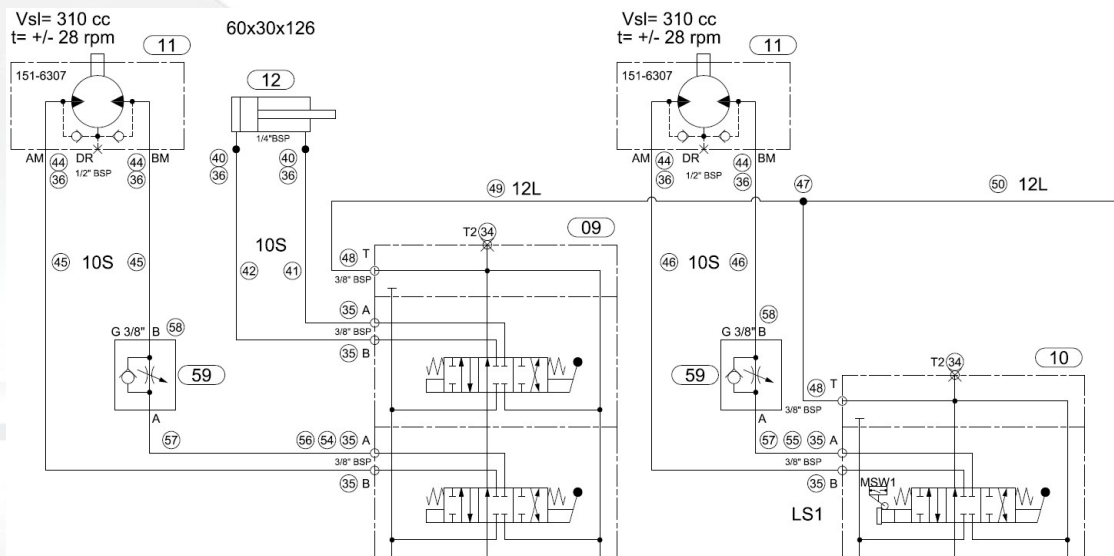


Fig. 08 Drive wheel adjustment set

Adjustment set for drive wheels BMS-220

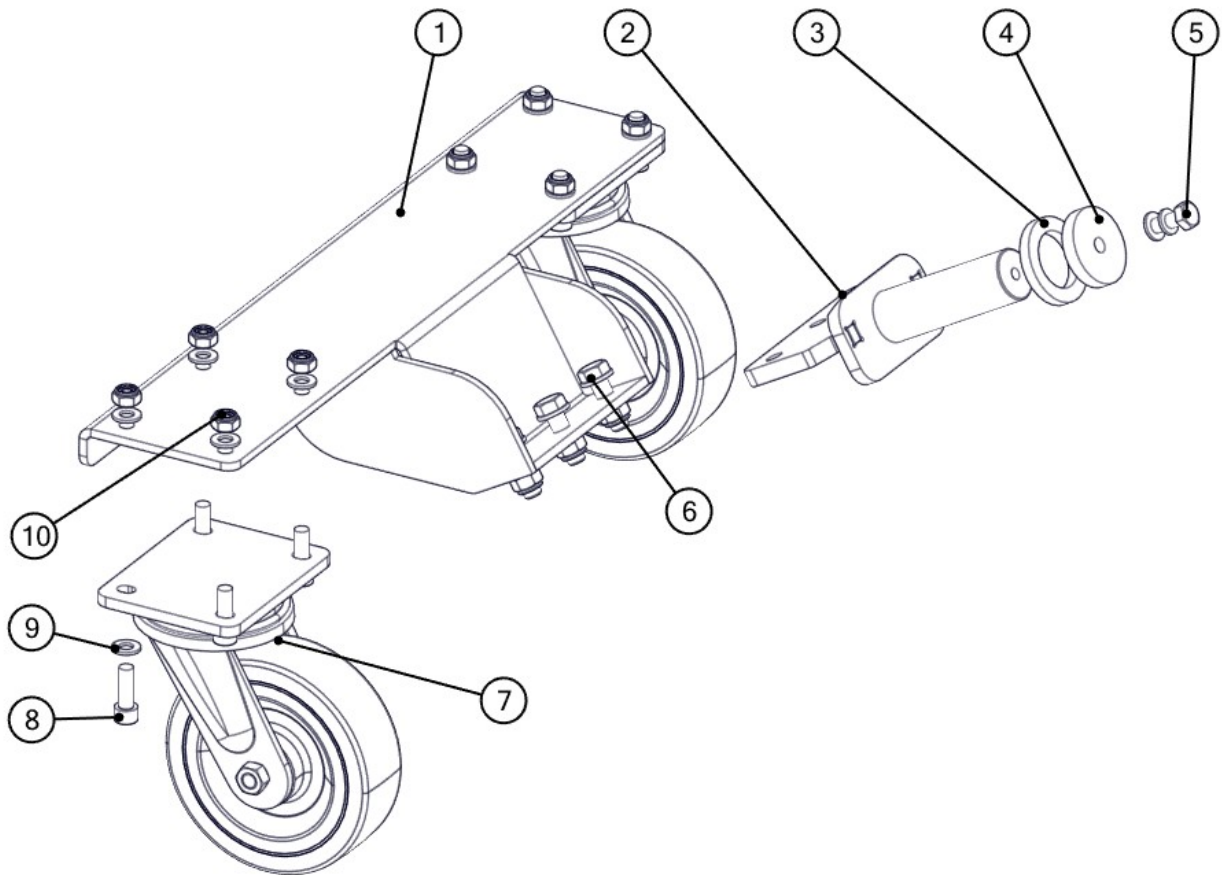


| LEFT HAND SIDE || RIGHT HAND SIDE |



Item	Blastrac PN	HQV PN	Description	Qty.
54	E10836	-	Straight threaded coupling	1
55	E10834	-	Elbow 90' Swivel coupling	1
56	E10835	-	Elbow 90' coupling	1
57	E10856	-	Straight coupling	2
58	E10833	535358601	Male stud coupling	2
59	E08031	533253001	Throttle- and non return valve	2
54 - 59	E12163	533879401	Adjustment set for drive wheels BMS-220(complete set LH side + RH side)	1 set

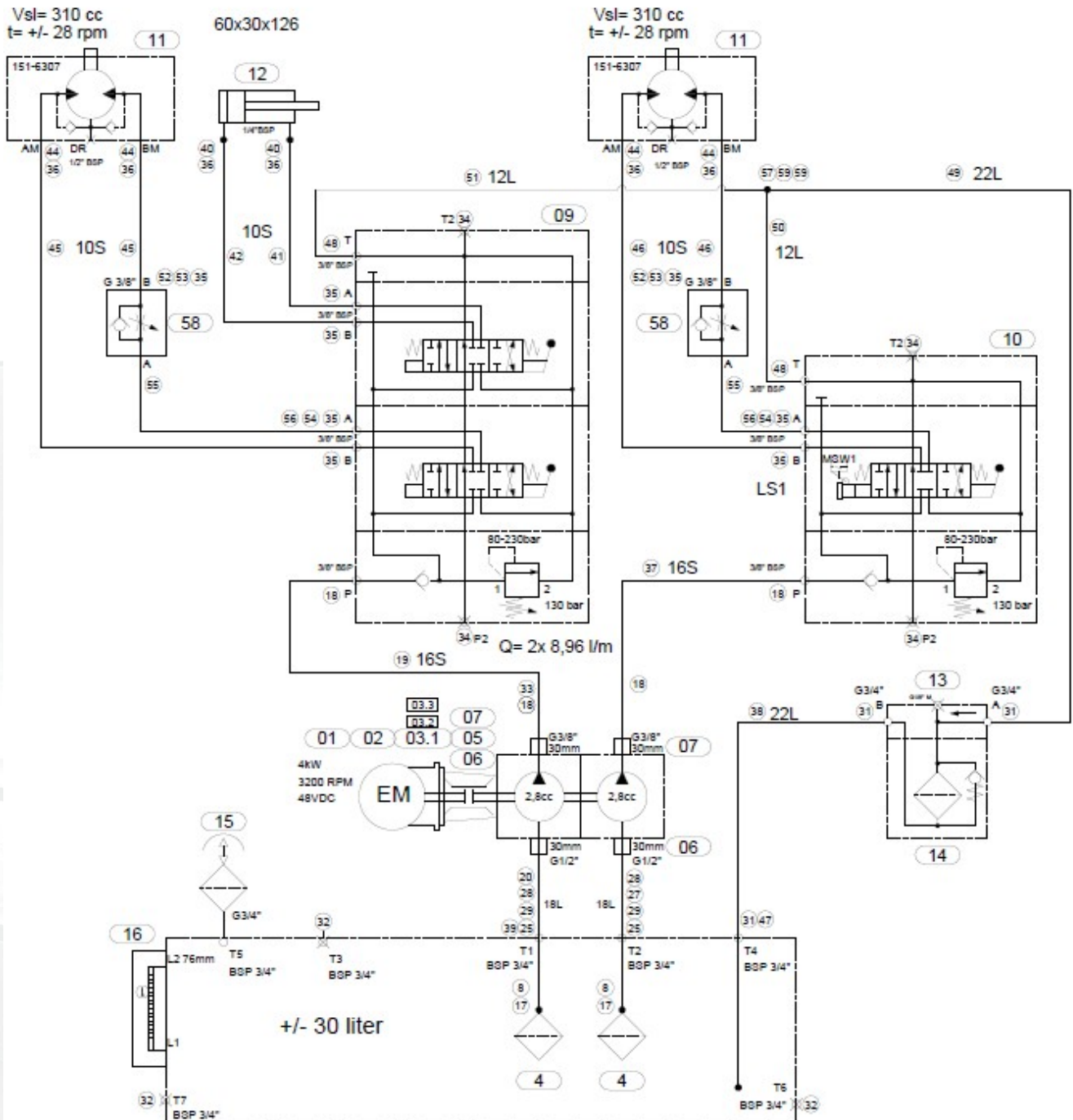
Fig. 09 Frontwheel dolly (E12133)



Item	Blastrac PN	HQV PN	Description	Qty.
1	E11286	534724801	Frame frontwheel dolly	1
2	E09538	531488401	Tool holder	1
3	E09953	533736301	Tool holder washer	1
4	E09949	533670301	Tool holder plate	1
5			M10x30 Bolt	1
6			M12x40 Bolt	3
7	E04440	533793401	Wheel + castor	2
8			M10x30 Hex sockethead cap	8
9			M10 washer	17
10			M10 Locking nut	8
1-10	E12133	534595802	Frontwheel dolly complete	1

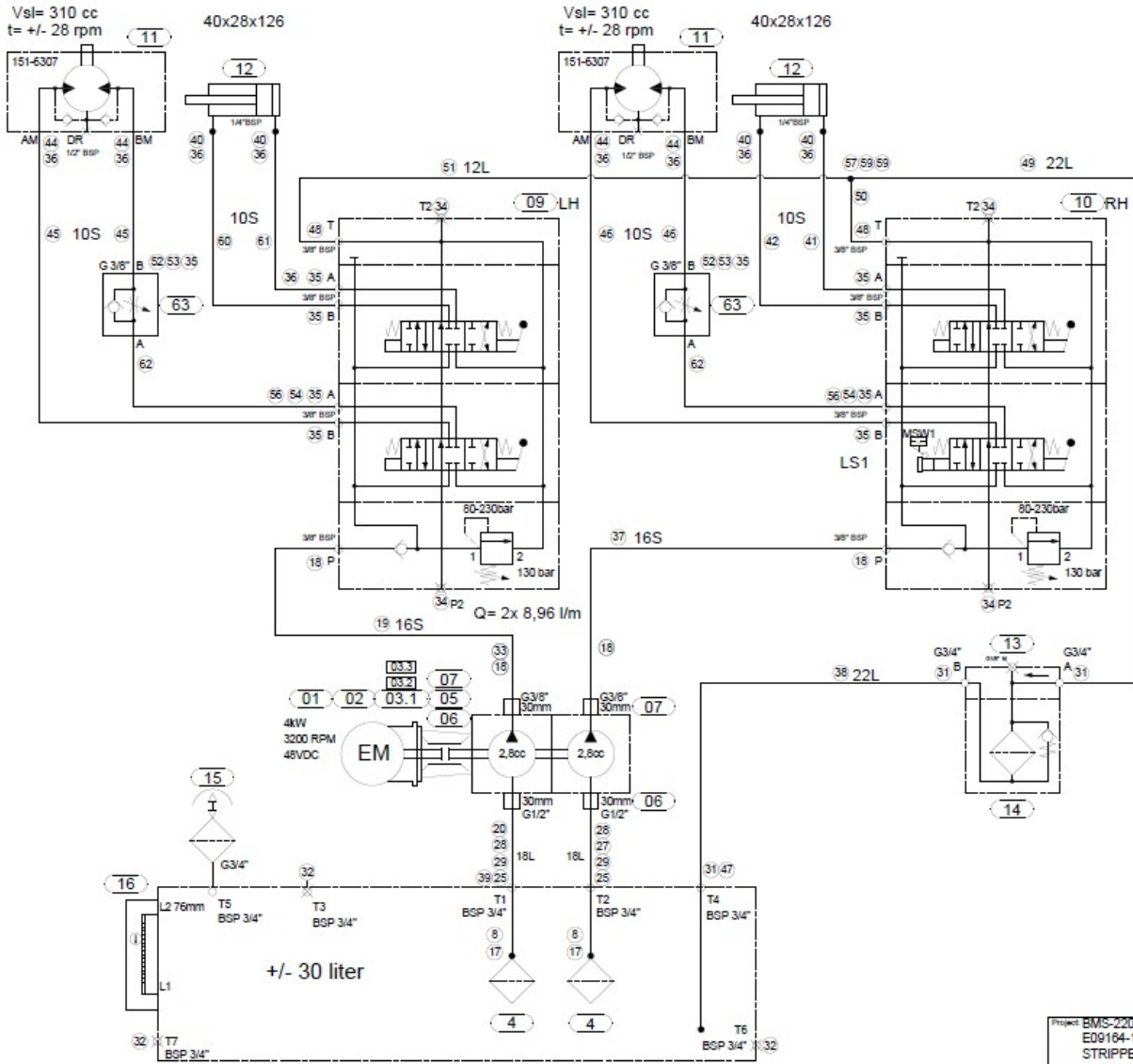


PJ13.1121.14 - (From serial number 28579B to 30339B.)





PJ20.1355.03 - (From serial number 30340B & up)



Project: BMS-220ADB HYD/SET MKII
E09184-1
STRIPPER



BLASTRAC EUROPE

WE'RE READY TO ASSIST YOU!

BLASTRAC THE NETHERLANDS

EUROPEAN HEAD OFFICE
Utrechtaven 12
NL - 3433 PN Nieuwegein
Tel.: +31 (0)30 601 88 66
Fax: +31 (0)30 601 83 33
Email: info@blastrac.nl
WWW.BLASTRAC.EU

BLASTRAC POLAND

SALES & SERVICE CENTRE
Golina, ul. Dworcowa 47E
63-200 Jarocin
Tel.: +48 (0)62 740-41-50
Fax: +48(0)62 740-41-51
Email: info@blastrac.pl
WWW.BLASTRAC.PL

BLASTRAC FRANCE

SALES & SERVICE CENTRE
ZI - 29, Av. des Temps Modernes
F - 86360 Chasseneuil du Poitou
Tel.: +33 (0)5 49 00 49 20
Fax: +33 (0)5 49 00 49 21
Email: info@blastrac.fr
WWW.BLASTRAC.FR

BLASTRAC ITALY

SALES & SERVICE CENTRE
S.S. 10 Padana Inferiore, 41
IT - 29012 Caorso (PC)
Tel.: +39 0523 814241
Fax: +39 0523 814245
Email: info@blastrac.it
WWW.BLASTRAC.IT

BLASTRAC GERMANY

SALES & SERVICE CENTRE
Richard-Byrd-Str. 15
50829 Köln
Tel.: +49 (0) 221 709032-0
Fax: +49 (0) 221 709032-22
Email: info@blastrac.de
WWW.BLASTRAC.DE

BLASTRAC UKRAINE

SALES & SERVICE CENTRE
Nezalezhnosti 14, of. 21
07400 Brovary
Tel.: +38 (0)44 222 51 28
Fax: +38 (0)44 277 98 29
Email: info@blastrac.com.ua
WWW.BLASTRAC.COM.UA

BLASTRAC SPAIN

SALES & SERVICE CENTRE
Calle del Estío, 9
E - 28500
Arganda del Rey, Madrid
Tel.: +34 91 660 10 65
Fax: +34 91 672 72 11
Email: info@blastrac.es
WWW.BLASTRAC.ES

BLASTRAC UNITED KINGDOM

SALES & SERVICE CENTRE
Unit 2a, Outgang Lane, Dinnington
Sheffield, South Yorkshire
GB - S25 3QY
Tel.: +44 (0) 1909 / 569 118
Fax: + 44 (0) 1909 / 567 570
Email: info@blastrac.co.uk
WWW.BLASTRAC.CO.UK

BLASTRAC MIDDLE EAST

SALES & SERVICE CENTRE
P.O. box 29424
Dubai / United Arab Emirates
Tel.: +971 4 3245760
Fax: +971 4 3245761
Email: info@blastracdxb.ae
WWW.BLASTRAC.AE

BLASTRAC NORDIC

SALES & SERVICE CENTRE
Lekstorps Industriväg 13D,
443 41, Gråbo
Sweden
Tel.: +46 (0) 31 30 333 55
Email: info@blastrac.se
WWW.BLASTRAC.SE

BLASTRAC INDIA

SALES & SERVICE CENTRE
G.B. Warehousing, GAT NO- 523,
Pune- Nagar Road, Wagholi
Pune- 412 207
Tel.: +91 99213 98109
Email: info.blastrac.in
WWW.BLASTRAC.IN