



SPARE PARTS LIST BDC-1133

VERSION 1.1



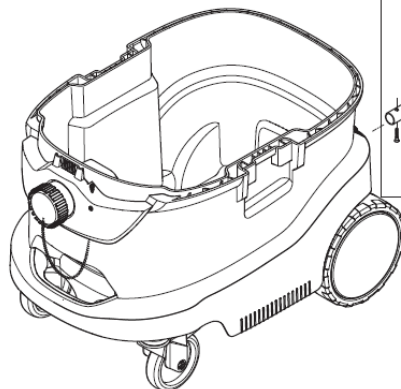
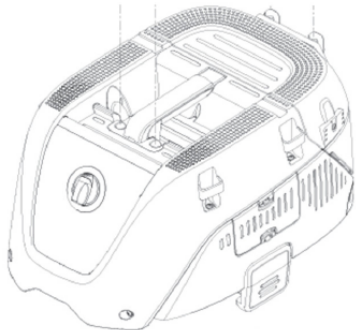
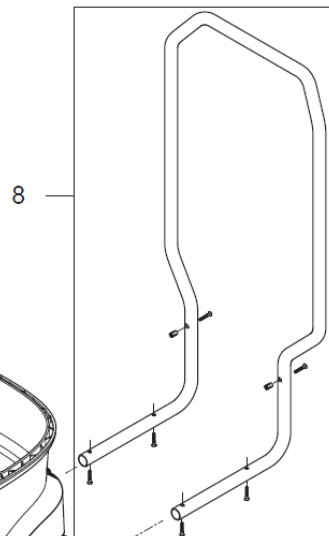
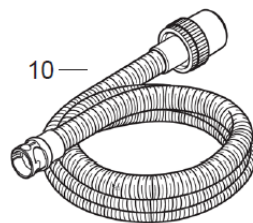
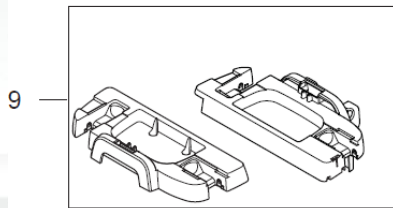
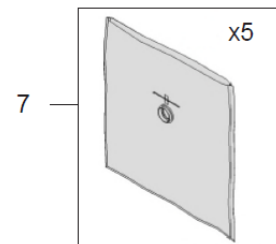
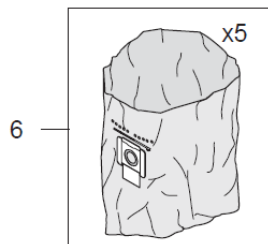
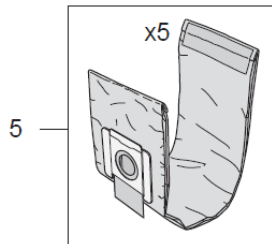
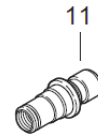
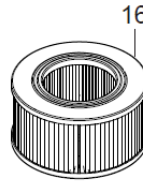
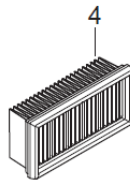
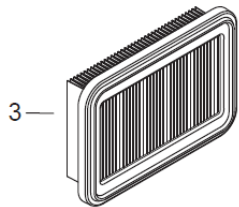
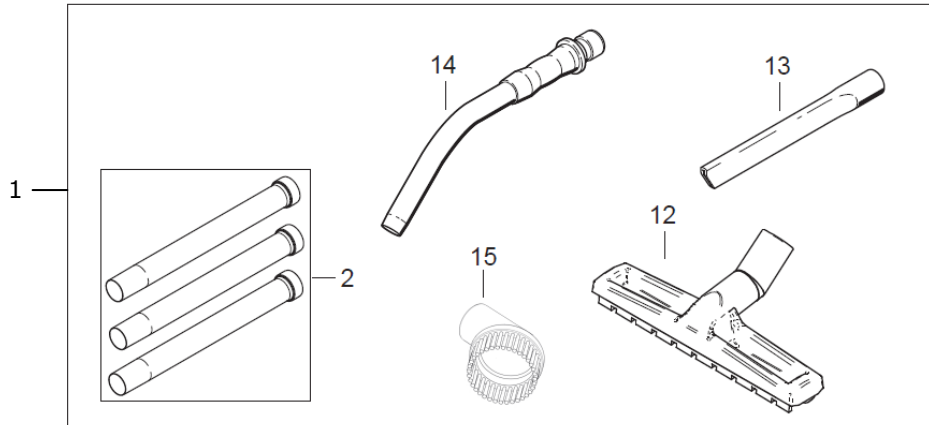
Index

1. Accessories	4
2. Container. Base, Cable	6
3. Head	8
4. Hoses and connections	10
5. Options	11

Contact

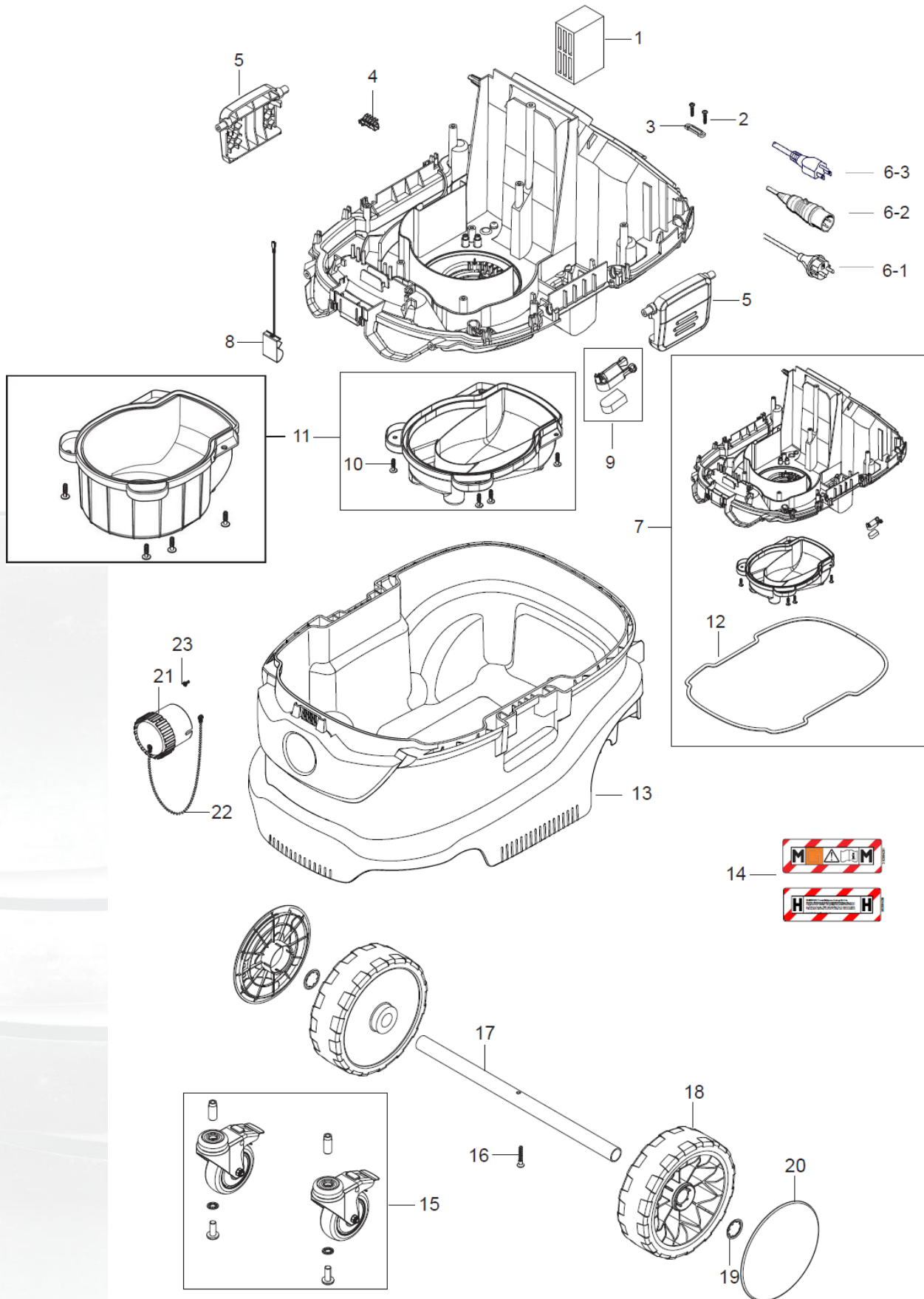


1. Accessories





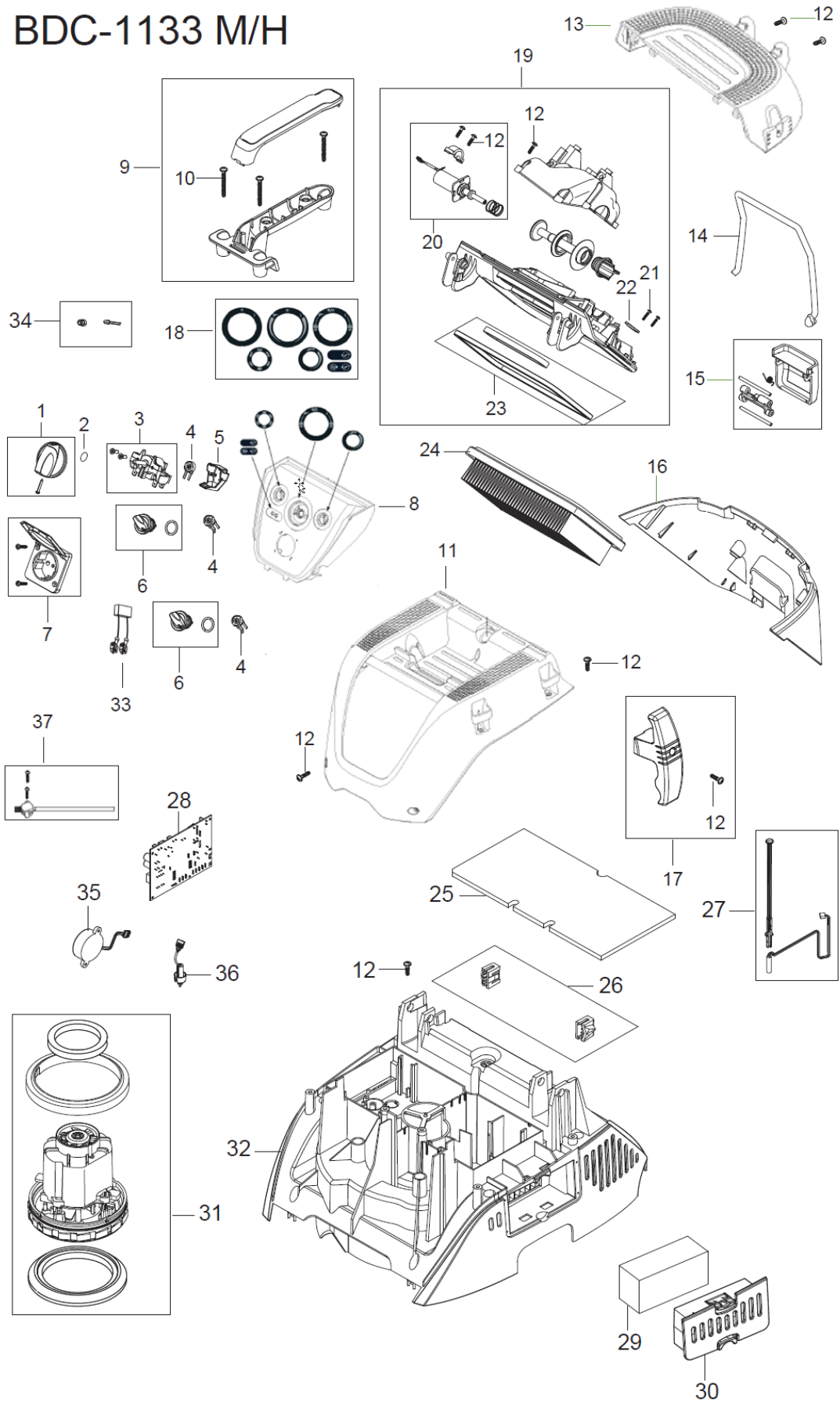
2. Container, Base, Cable





3. Head

BDC-1133 M/H



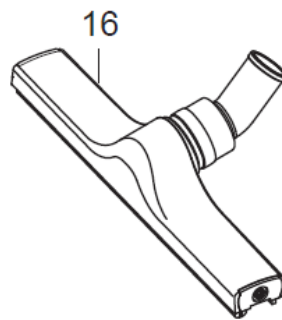
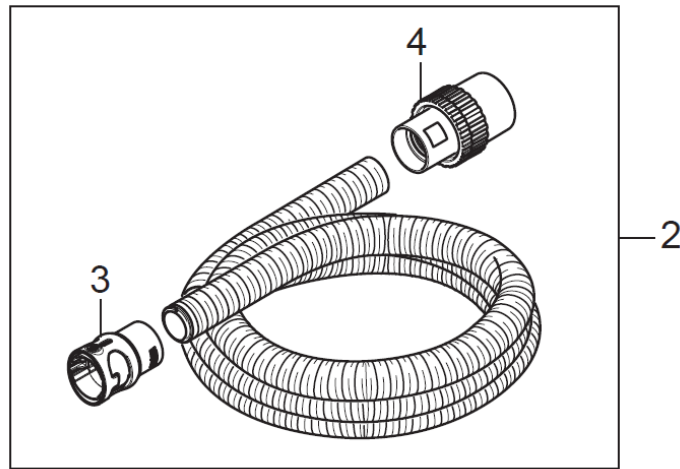


3. Head

Item	Part number	Description	Qty.
1	CFA107401213	Switch knob red	1
2	CFA9868	O-RING	1
3	CFA107415085	Rortary switch 5 Pos. 16A	1
4	CFA107415024	Potentiometer kit	3
5	CFA107415080	Cap for potentiometer	1
6	CFA107418673	Switch knob small	2
7	CFA302004034	Socket *EU* - CEE7/4	1
	CFA107400057	Socket *GB* - 110V/10A	1
	CFA302004338	Socket *US,CA,MX* - NEMA	1
8	CFA107418671	Control panel BDC-1133	1
9	CFA107415038	Handle kit black	1
10	CFA128500203	Screw K50X45 WN1451 SP	3
11	CFA107418864	Top cover BDC-1133	1
12	CFA302004029	Screw ,Ø5x18 TX20	17
13	CFA107417554	Hatch back door upper cover BDC-1133	1
14	CFA107415035	Cord strap for cable	1
15	CFA107415032	Hatch door clamp black	1
16	CFA107417555	Hatch back lower cover BDC-1133	1
17	CFA107415083	Hose/cable hook black 1 pc.	2
18	CFA107415077	Control panel labels	1
19	CFA107415027	Hatch door frame w. sealing 220-240V	1
	CFA107417859	Hatch door frame w. sealing 100-120V	1
20	CFA107415031	Solenoid kit 220-240V	1
	CFA107415079	Solenoid kit 100-120V	1
21	CFA302004032	Screw Ejot PT35X18WN5451	2
22	CFA5697	Strap 3X8X33	1
23	CFA107415090	Hatch door filter gasket kit	1
24	CFA1133-FT-M	Flat filter PTFE M-class BDC-1133	1
25	CFA107417101	Foam sealing 298X148mm ²	1
26	CFA107415075	Hatch door hinge snap 2 pcs.	1
27	CFA107415060	Reed sensor with applicator	1
28	CFA107417103	PCBA Auto on/off BDC-1133 M-class 220-240V	1
	CFA107417104	PCBA Auto on/off BDC-1133 M-class 110-120V	1
	CFA107417106	PCBA Auto on/off BDC-1133 H-class 220-240V	1
29	CFA107415096	Diffusor BDC-1133 black	1
30	CFA107417564	Cover for motor cooling filter	1
31	CFA107415055	Motor kit BDC-1133 1200W 220-240V 50/60HZ	1
	CFA107415099	Motor kit BDC-1133 1000W 110-120V 50/60HZ	1
32	CFA107418670	Airguide BDC-1133	1
33	CFA107404542	Capacitor	1
34	CFA107415087	LED air flow control kit 2 pcs.	1
35	CFA107416958	Buzzer kit BDC-1133	1
36	CFA107416952	Flow sensor kit BDC-1133	1
37	CFA107417111	Differential pressure sensor kit	1



4. Hoses and connections



Item	Part number	Description	Qty
2	CFA1133-SA-1	Suction hose ø36mm x 4m silver (incl. couplings)	1
	CFA107413544	Suction hose antistatic D36mm x 4 meter Black/Red (incl. couplings).	1
3	CFA1133-SA-2	Hose sleeve ø36mm AS quicksystem	1
4	CFA1133-SA-3	Hose connection Ø50x36 AS	1
16	CFA302003666	Floor nozzle D36 W/D 400mm (Standard delivered with 2x Brush strips & 2x Rubber libs)	1
	CFA302003796	Replacement Brush strips(2x) Floor nozzle D36 W/D 400mm	1
	CFA302003797	Replacement Rubber libs (2x) Floor nozzle D36 W/D 400mm	1



5. Options

T-lock cases



CFA1133-HTS-1

Box holder is also compatible for Bosch, Stihl, Flex, Hitachi, Makita, Festool, Mafell and Metabo.

Cleaning set complete



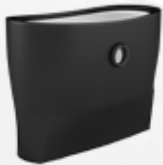
Asbestos kit





6. ASBESTOS KIT FOR THE BDC-1133PHC DUST COLLECTOR

FOR SAFE REMOVAL OF HAZARDOUS MATERIALS SUCH AS ASBESTOS



CFA1133-ASB-1
1 X SAFETY FILTER BAG
(COMBINATION OF FLEECE
FILTER BAG & PLASTIC
DISPOSAL BAG)

CFA1133-ASB-2
MOTOR COOLING
AIR FILTER

CFA1133-ASB-3
EXHAUST AIR ADAPTER
CFA1133-ASB-4
HOSE SLEEVE

004583/RD
4 M RED HOSE
Ø51MM

E12008
ASBESTOS
STICKERS
(6 languages)

HOW TO INSTALL THE MOTOR COOLING AIR FILTER:





HOW TO INSTALL THE EXHAUST AIR ADAPTER:



TOOL: TORX SCREWDRIVER T10

WHY SHOULD YOU USE THE RED HOSE:



THE RED HOSE ALLOWS YOU TO REDIRECT THE BLOWN OUT AIR TO THE FRONT OF THE AIR EXTRACTOR. IT WILL PROTECT THE OPERATORS FROM HAZARDOUS ASBESTOS FIBRES BLOWN UP FROM THE GROUND, BELOW THE DIFFUSER. THE BRIGHT RED COLOUR ENSURES THE HOSE IS CLEARLY VISIBLE, EVEN WITH FULLY PROTECTIVE CLOTHING. THE SUPPLIED 4 METRES RED HOSE IS THE MAXIMUM REQUIRED TO MEET THE TRGS519 ASBESTOS REGULATIONS (STRICTEST ASBESTOS REGULATIONS IN EUROPE).

DO NOT FORGET TO USE THE ASBESTOS STICKERS:



**BLASTRAC THE NETHERLANDS**

EUROPEAN HEAD OFFICE
Utrechthaven 12
NL - 3433 PN Nieuwegein
Tel.: +31 (0)30 601 88 66
Fax: +31 (0)30 601 83 33
Email: info@blastrac.nl
WWW.BLASTRAC.EU

BLASTRAC ITALY

SALES & SERVICE CENTRE
S.S. 10 Padana Inferiore, 41
IT - 29012 Caorso (PC)
Tel.: +39 0523 814241
Fax: +39 0523 814245
Email: info@blastrac.it
WWW.BLASTRAC.IT

BLASTRAC SPAIN

SALES & SERVICE CENTRE
Calle del Estío, 9
E – 28500
Arganda del Rey, Madrid
Tel.: +34 91 660 10 65
Fax: +34 91 672 72 11
Email: info@blastrac.es
WWW.BLASTRAC.ES

BLASTRAC POLAND

SALES & SERVICE CENTRE
Golina, ul. Dworcowa 47E
63-200 Jarocin
Tel.: +48 (0)62 740-41-50
Fax: +48(0)62 740-41-51
Email: info@blastrac.pl
WWW.BLASTRAC.PL

BLASTRAC GERMANY

SALES & SERVICE CENTRE
Richard-Byrd-Str. 15
50829 Köln
Tel.: +49 (0) 221 709032-0
Fax: +49 (0) 221 709032-22
Email: info@blastrac.de
WWW.BLASTRAC.DE

BLASTRAC UNITED KINGDOM

SALES & SERVICE CENTRE
Unit 2a, Outgang Lane,
Dinnington
Sheffield, South Yorkshire
GB - S25 3QY
Tel.: +44 (0) 1909 / 569 118
Fax: + 44 (0) 1909 / 567 570
Email: info@blastrac.co.uk
WWW.BLASTRAC.CO.UK

BLASTRAC NORDIC

SALES & SERVICE CENTRE
Lekstorps Industriväg 13D,
443 41, Gråbo
Sweden
Tel.: +46 (0) 31 30 333 55
Email: info@blastrac.se
WWW.BLASTRAC.SE

BLASTRAC FRANCE

SALES & SERVICE CENTRE
ZI - 29, Av. des Temps Modernes
F - 86360 Chasseneuil du Poitou
Tel.: +33 (0)5 49 00 49 20
Fax: +33 (0)5 49 00 49 21
Email: info@blastrac.fr
WWW.BLASTRAC.FR

BLASTRAC UKRAINE

SALES & SERVICE CENTRE
Nezalezhnosti 14, of. 21
07400 Brovary
Tel.: +38 (0)44 222 51 28
Fax: +38 (0)44 277 98 29
Email: info@blastrac.com.ua
WWW.BLASTRAC.COM.UA

BLASTRAC MIDDLE EAST

SALES & SERVICE CENTRE
P.O. box 29424
Dubai / United Arab Emirates
Tel.: +971 4 3245760
Fax: +971 4 3245761
Email: info@blastracdxbae
WWW.BLASTRAC.AE

BLASTRAC INDIA

SALES & SERVICE CENTRE
G.B. Warehousing, GAT NO- 523,
Pune- Nagar Road, Wagholi
Pune- 412 207
Tel.: +91 99213 98109
Email: info.blastrac.in
WWW.BLASTRAC.IN